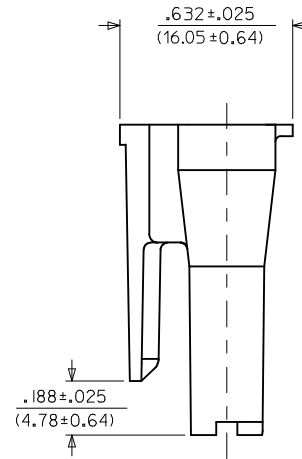
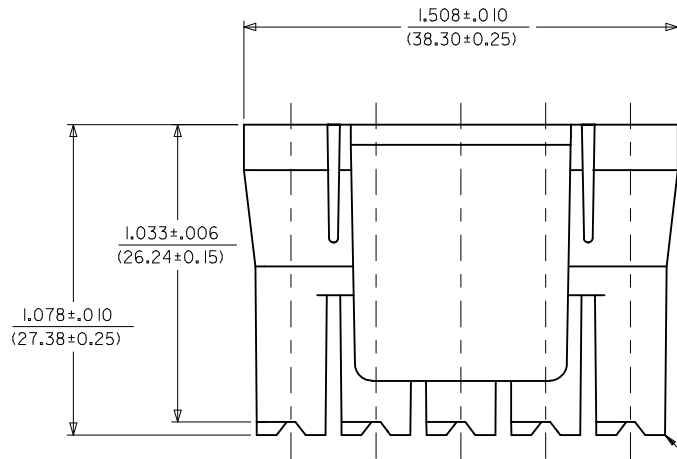


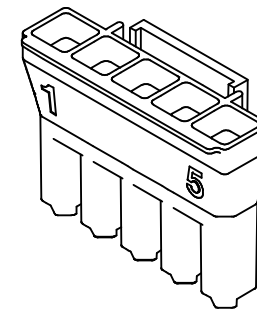
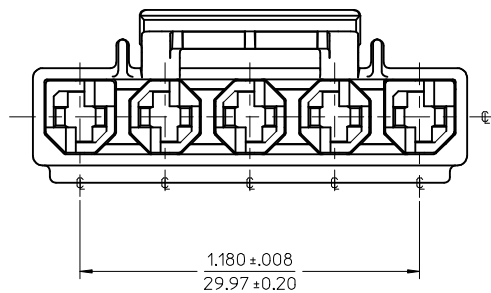
NOTES:

1. MATERIAL: SEE CHART.
2. THIS CONNECTOR HOUSING FOR USE WITH 43375-**** TERMINALS.
3. THIS CONNECTOR HOUSING WILL MATE TO A-43160-*****5, 43180-****5, AND 43680-****5 HOUSINGS.
4. PRODUCT SPECIFICATION: PS-44441-9999.
5. PACKAGING: PK-44441-001.
6. FOR V-0 AND GLOW-WIRE MATERIAL: PARTS CONFORM TO CLASS 'B' REQUIREMENTS OF COSMETIC SPECIFICATION PS-45499-002 BUT, MEETS CLASS 'C' REQUIREMENTS FOR BUBBLES, SINK AND DISCOLORATION.

| ITEM NUMBER | MATERIAL | COLOR |
|-------------|---|-----------------------|
| 44441-2005 | NYLON 66, UL94V-0, | BLACK |
| 44441-1005 | NYLON PA66, UL94V-2 | NATURAL (TRANSLUCENT) |
| 44441-3005 | NYLON, UL94V-2 IEC 60335-1 GLOW WIRE CAPABLE | BLACK |



CIRCUIT 1



44441-005
(NO SCALE)

| NOTE 6 IEC NO: UCP2015-3600 DRAWINGS: 2015/03/04 CHKD:JDOX APPR:FSMITH 2015/03/26 | QUALITY SYMBOLS ∇=0 ∇=0 ∇=0 | GENERAL TOLERANCES (UNLESS SPECIFIED) <table border="1"> <thead> <tr> <th></th> <th>mm</th> <th>INCH</th> </tr> </thead> <tbody> <tr> <td>4 PLACES ±</td> <td>---</td> <td>---</td> </tr> <tr> <td>3 PLACES ±</td> <td>---</td> <td>±.010</td> </tr> <tr> <td>2 PLACES ±</td> <td>0.25</td> <td>±.014</td> </tr> <tr> <td>1 PLACE ±</td> <td>0.35</td> <td>---</td> </tr> <tr> <td>0 PLACE ±</td> <td></td> <td>±</td> </tr> </tbody> </table> | | mm | INCH | 4 PLACES ± | --- | --- | 3 PLACES ± | --- | ±.010 | 2 PLACES ± | 0.25 | ±.014 | 1 PLACE ± | 0.35 | --- | 0 PLACE ± | | ± | DIMENSION STYLE IN/MM DRAWN BY: AELHAG DATE: 2010/09/20 CHECKED BY: JBELL DATE: 2010/09/20 APPROVED BY: FSMITH DATE: 2010/10/07 | SCALE: INCH DESIGN UNITS: INCH THIRD ANGLE PROJECTION | TITLE: 5-CIR. RECEPT. HOUSING .125 X .020 FLAT BLADE TPA W/THUMB LATCH molex | MATERIAL NO. SEE CHART DOCUMENT NO. SD-44441-005 SHEET NO. 1 OF 1 |
|---|--------------------------------------|---|---|----|------|------------|-----|-----|------------|-----|-------|------------|------|-------|-----------|------|-----|-----------|--|---|--|---|--|---|
| | | mm | INCH | | | | | | | | | | | | | | | | | | | | | |
| | 4 PLACES ± | --- | --- | | | | | | | | | | | | | | | | | | | | | |
| | 3 PLACES ± | --- | ±.010 | | | | | | | | | | | | | | | | | | | | | |
| 2 PLACES ± | 0.25 | ±.014 | | | | | | | | | | | | | | | | | | | | | | |
| 1 PLACE ± | 0.35 | --- | | | | | | | | | | | | | | | | | | | | | | |
| 0 PLACE ± | | ± | | | | | | | | | | | | | | | | | | | | | | |
| DRAFT WHERE APPLICABLE MUST REMAIN WITHIN DIMENSIONS | ANGULAR ±1/2° | SIZE C | THIS DRAWING CONTAINS INFORMATION THAT IS PROPRIETARY TO MOLEX INCORPORATED AND SHOULD NOT BE USED WITHOUT WRITTEN PERMISSION | | | | | | | | | | | | | | | | | | | | | |
| F2 | REV | | | | | | | | | | | | | | | | | | | | | | | |
| | | | | | | | | | | | | | | | | | | | | | | | | |