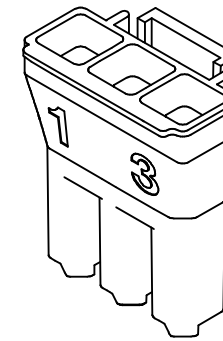
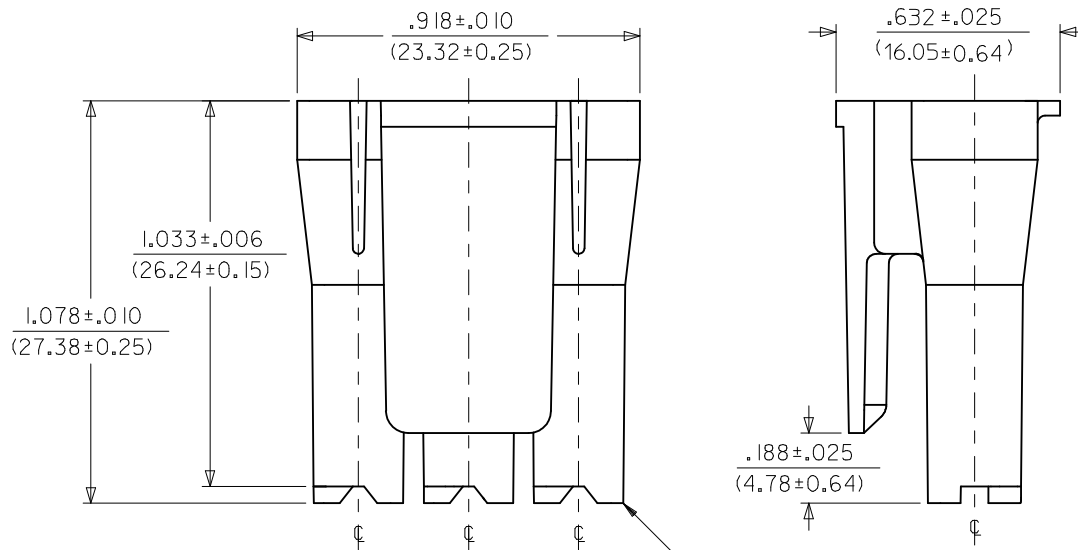


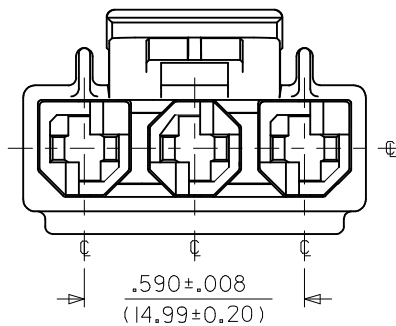
NOTES:

1. MATERIAL: SEE CHART.
2. THIS CONNECTOR HOUSING FOR USE WITH 43375-**** TERMINALS.
3. THIS CONNECTOR HOUSING WILL MATE TO A-43160-****3, 43180-****3, AND 43680-****3 HOUSINGS.
4. PRODUCT SPECIFICATION: PSX-44441-9999.
5. PACKAGING: PK-44441-001.
6. FOR V-0 AND GLOW-WIRE MATERIAL: PARTS CONFORM TO CLASS 'B' REQUIREMENTS OF COSMETIC SPECIFICATION PS-45499-002 BUT, MEETS CLASS 'C' REQUIREMENTS FOR BUBBLES, SINK AND DISCOLORATION.

ITEM NUMBER	MATERIAL	COLOR
44441-2003	UL94V-0 NYLON	BLACK
44441-1003	UL94V-2 NYLON	NATURAL (TRANSLUCENT)
44441-3003	UL94V-2 NYLON IEC 60335-1 GLOW WIRE CAPABLE	BLACK



44441-*003
(NO SCALE)



CIRCUIT 1

NOTE 6 EC NO: UCP2015-3600 DRAWINGS 2015/03/04 CHKD: JFOX APPR: F SMITH 2015/03/26	DESCRIPTION	QUALITY SYMBOLS <div><div><div>▽</div><div>=0</div></div><div><div>▽</div><div>=0</div></div><div><div>▽</div><div>=0</div></div></div>	GENERAL TOLERANCES (UNLESS SPECIFIED)			DIMENSION STYLE IN/MM		SCALE 3:1	DESIGN UNITS INCH	THIRD ANGLE PROJECTION <div><div><div></div><div></div><div></div></div></div>				
					mm	INCH	DRAWN BY GC	DATE 1995/01/06	TITLE 3-CIR. RECEPT. HOUSING .125 X .020 FLAT BLADE TPA W/THUMB LATCH					
			4 PLACES		± ---	± ---	CHECKED BY KBP	DATE 1995/01/06						
			3 PLACES		± ---	± .010								
			2 PLACES		± 0.25	± .014	APPROVED BY RAS		DATE 1995/01/06	DOCUMENT NO. molex SD-44441-*003				
			1 PLACE		± 0.35	± ---	MATERIAL NO.							
			0 PLACE		±	±	SEE CHART							
		ANGULAR ±1/2°			DRAFT WHERE APPLICABLE MUST REMAIN WITHIN DIMENSIONS		SHEET NO. 1 OF 1							
REV	F1				SIZE B	THIS DRAWING CONTAINS INFORMATION THAT IS PROPRIETARY TO MOLEX INCORPORATED AND SHOULD NOT BE USED WITHOUT WRITTEN PERMISSION								