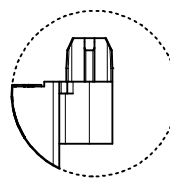
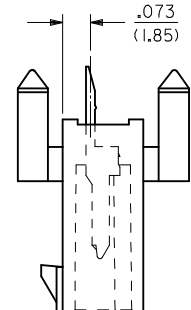
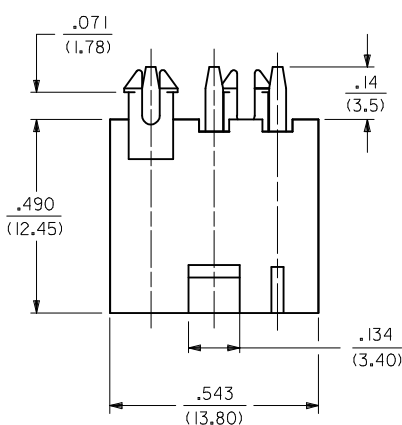
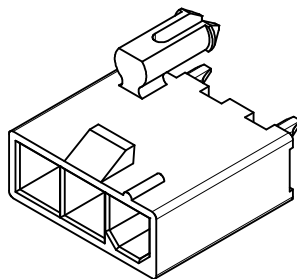
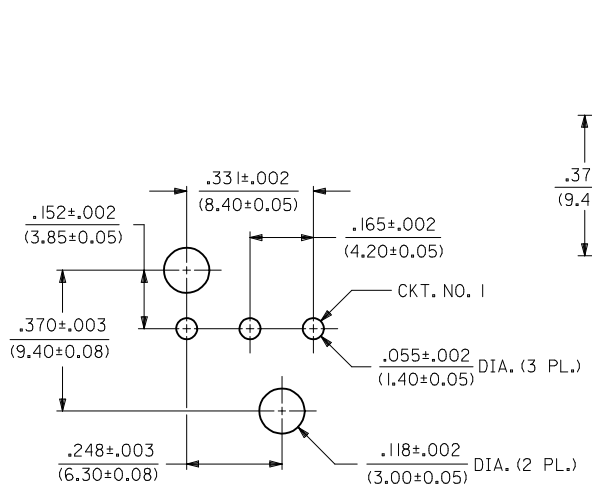


NOTES:

- MATERIALS:  
HOUSING:  
"BLANK"-NYLON 6/6, UNFILLED UL94 V-2, COLOR: NATURAL  
"130"-GLASS FILLED LCP, UL94 V-0, COLOR: NATURAL  
"210"-NYLON 6/6, UNFILLED UL94 V-0, COLOR: NATURAL  
"400"-NYLON 6/6, UNFILLED UL94 V-0, COLOR: BLACK  
TERMINALS:  
BRASS
- TERMINAL PLATING:  
"BLANK"=.000035/(0.00090) MIN. BRIGHT TIN OVER  
.000020/(0.00050) MIN. COPPER  
GS2=.000015/(0.00038) MIN. SELECT GOLD AND  
.000100/(0.00254) MIN. SELECT MATTE TIN  
OVER .000050/(0.00127) MIN. NICKEL OVERALL  
GS=.000030/(0.00076) MIN. SELECT GOLD AND  
.000100/(0.00254) MIN. SELECT MATTE TIN  
OVER .000050/(0.00127) MIN. NICKEL OVERALL  
S=.000100/(0.00254) MIN. BRIGHT TIN OVER  
.000050/(0.00127) MIN. NICKEL  
MS=.000100/(0.00254) MIN. MATTE TIN OVER  
.000050/(0.00127) MIN. NICKEL
- PRODUCT SPECIFICATION: PS-5556-001
- PACKAGING: TRAY PACKED PER PK-5566-002
- PART MATES WITH MINI-FIT JR. RECEPTACLE NO. 5557.
- ALL DIMENSIONS ARE REFERENCE UNLESS OTHERWISE SPECIFIED.
- PART IS NOT DESIGNED FOR CURRENT SHARING.
- PARTS ARE NOT TO BE MATED OR UN-MATED WHILE CIRCUITS ARE LIVE.
- PART CONFORMS TO CLASS "B" REQUIREMENTS OF COSMETIC SPECIFICATION PS-45499-002.



PRESS FIT PEG OPTION



REV	DESCRIPTION	DATE	APPROVED
L4	ADD MS P/N'S	2015/07/20	FSMITH
	EC NO: UCP2016-0302	2015/07/20	FSMITH
	DRWIN: MONT1	2015/07/20	FSMITH
	CHKD: JBELL	2015/07/20	FSMITH
	APPR: FSMITH	2015/07/23	FSMITH

GENERAL TOLERANCES (UNLESS SPECIFIED)	DIMENSION STYLE	SCALE	DESIGN UNITS	THIRD ANGLE PROJECTION
4 PLACES ± --- ± ---	IN/MM	4:1	METRIC	
3 PLACES ± --- ± .010				
2 PLACES ± 0.25 ± .020				
1 PLACE ± 0.50 ± ---				
0 PLACE ± --- ± ---				
ANGULAR ±1/2°				
DRAFT WHERE APPLICABLE MUST REMAIN WITHIN DIMENSIONS				

DRAWN BY	DATE	CHECKED BY	DATE	APPROVED BY	DATE
GEP	1990/06/07			FSMITH	2012/09/05
RJF	1990/06/07				

MATERIAL NO.	DOCUMENT NO.	SHEET NO.
SEE CHART	SDA-5566-03*3*	1 OF 1

LEGEND

5566-03A3\*-\*\*\*

- BASE NO. \_\_\_\_\_
- CIRCUIT SIZE \_\_\_\_\_
- MOUNTING \_\_\_\_\_  
3 = SNAP FIT PEGS  
15 = PRESS FIT PEGS
- PLATING \_\_\_\_\_  
(SEE NOTE 2)
- HOUSING MATERIAL \_\_\_\_\_  
(SEE NOTE 1)

PART NO.	ENG. NO.	HOUSING MAT'L. (SEE NOTE 1)	PLATING (SEE NOTE 2)
39-30-1039	5566-03A3	"BLANK"	"BLANK"
39-30-2033	-03A3GS2	↑	GS2
39-30-2031	-03A3GS	↓	GS
39-30-5037	-03A3S	↓	S
46999-0792	-03A3MS	"BLANK"	MS
46999-0680	-03A15GS-130	130	GS
46999-0685	-03A15MS-130	130	MS
39-30-2030	-03A3-210	210	"BLANK"
39-30-2034	-03A3GS2-210	↑	GS2
39-30-2032	-03A3GS-210	↓	GS
39-30-5038	-03A3S-210	↓	S
46999-0793	-03A3MS-210	210	MS
46999-0563	5566-03A3MS-400	400	MS

RECOMMENDED HOLE LAYOUT FOR  
.070/(1.78) MAX. THICK P. C. BOARD