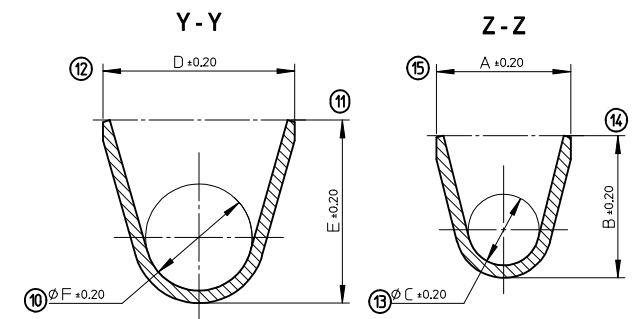
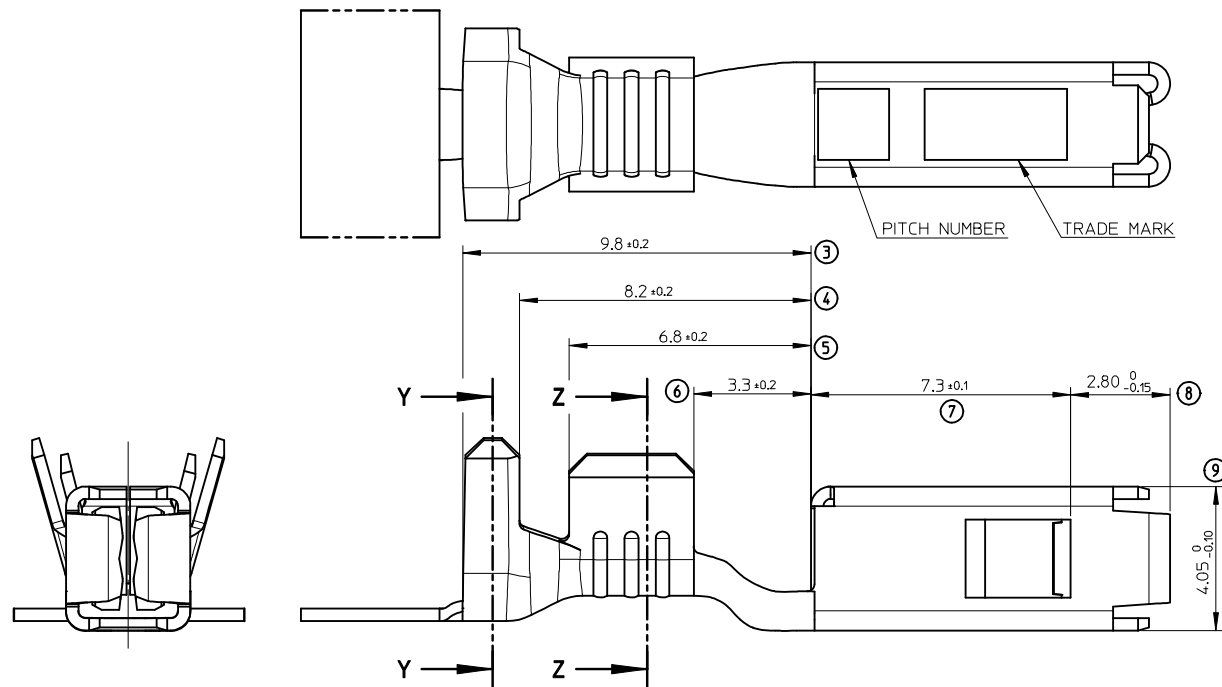
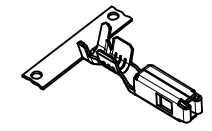
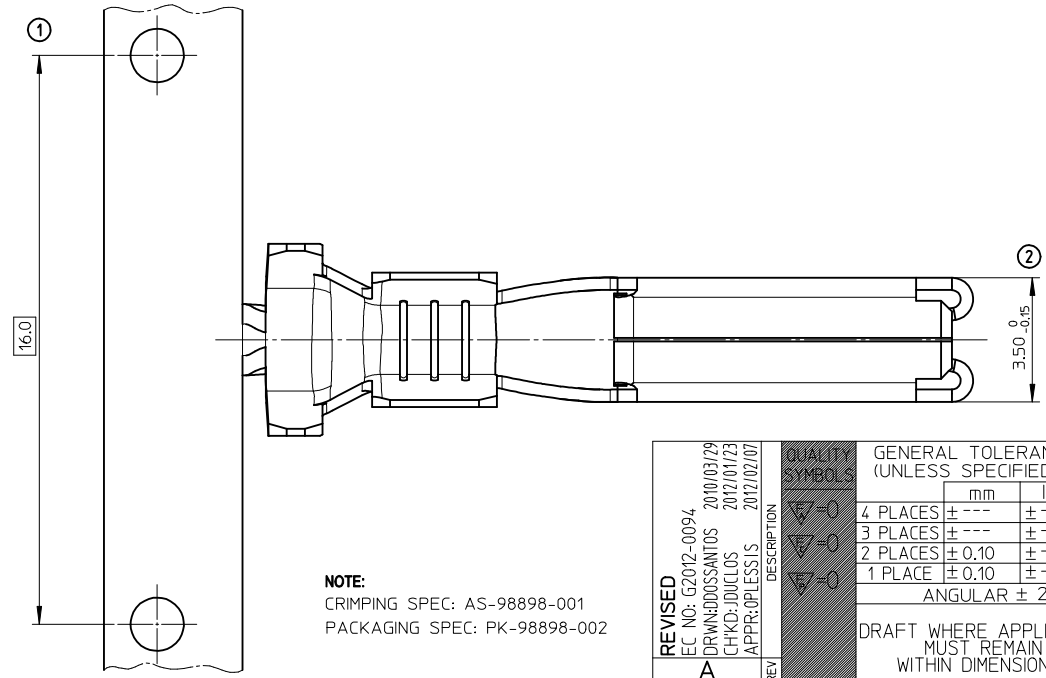


ISO VIEW



SPECIFICATIONS

GRIP CODE	S	M	L
SECTION MM2	0.35 TO 0.75	1 TO 2.5	3 TO 5
MOLEX PART NUMBER (P/N*)	0988981029	0988981039	0988981049
PLATING	Pre-plated 2µ Sn min.		
MATERIAL	HIGH COPPER		
PART WEIGHT (g)	0.737	0.794	0.814
THICKNESS	0.35		
A	2.55	3.80	4.70
B	2.60	4.00	4.95
Ø C	1.20	2.00	2.00
D	3.85	5.40	6.35
E	4.00	5.15	6.60
Ø F	2.30	3.00	3.30



NOTE:
CRIMPING SPEC: AS-98898-001
PACKAGING SPEC: PK-98898-002

REV	DESCRIPTION	GENERAL TOLERANCES (UNLESS SPECIFIED)	
		mm	INCH
A	REVISED	4 PLACES ± 0.10	± 0.004
		3 PLACES ± 0.15	± 0.005
		2 PLACES ± 0.20	± 0.008
		1 PLACE ± 0.25	± 0.010
		ANGULAR ± 2°	
		DRAFT WHERE APPLICABLE MUST REMAIN WITHIN DIMENSIONS	

DIMENSION STYLE MM ONLY	SCALE 10:1	DESIGN UNITS METRIC	FIRST ANGLE PROJECTION
DRAWN BY G. DESBRUERES	DATE 2009/11/17	TITLE UCC2 RCPT TERMINAL 2.8	
CHECKED BY D. DOS SANTOS	DATE 2009/11/17	APPROVED BY OPLESSIS	
MATERIAL NO.	DATE 2012/02/07	DOCUMENT NO.	
SEE CHART		MOLEX INCORPORATED	
SIZE A2		SD-98898-100	
THIS DRAWING CONTAINS INFORMATION THAT IS PROPRIETARY TO MOLEX INCORPORATED AND SHOULD NOT BE USED WITHOUT WRITTEN PERMISSION			SHEET NO. 1 OF 1