

10 9 8 7 6 5 4 3 2 1

F

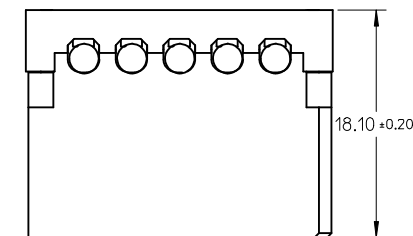
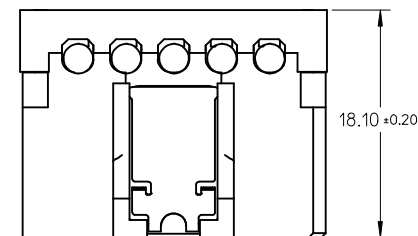
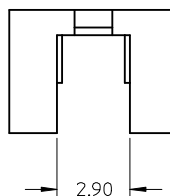
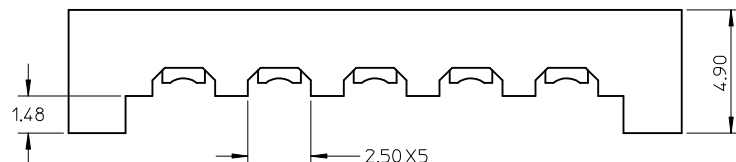
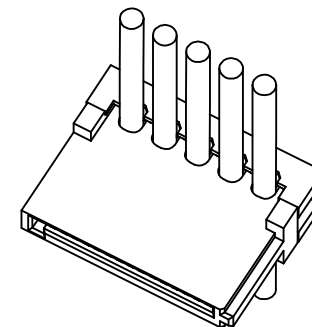
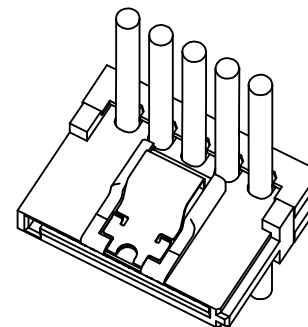
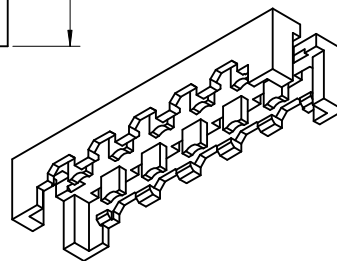
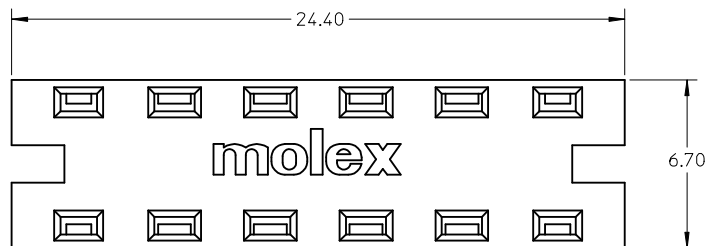
E

D

C

B

A



APPLICATION FOR WITH LATCH TYPE

APPLICATION FOR WITHOUT LATCH TYPE

#### NOTE

- 1 MATERIAL: THERMAL PLASTIC, COLOR : BLACK UL94V-0.
- 2 THIS COVER IS FEED THROUGH TYPE, IT IS AVAILABLE FOR 67926-000\*/002\*(WITH LATCH), 67926-001\*(WITHOUT LATCH).
- 3 PACKAGE SPEC:
  - 3.1 1000 PCS IN ONE BAG.
  - 3.2 3000 PCS(3 PAGS) IN ONE INNER CARTON.
  - 3.3 12,000 PCS(4 INNER CARTONS) IN ONE OUTER CARTON.

P/N	REMARK
67926-0041	NON HALOGEN-FREE
67926-0841	HALOGEN-FREE

ADD PART NUMBER EC NO: SH2009-0536 TIDRWN:XJ SONG 2009/05/05 CHKD:XJ SONG 2009/06/19 APPR:HWANG 2009/06/23	QUALITY SYMBOLS  ▽=0 ▽=0	GENERAL TOLERANCES (UNLESS SPECIFIED)	DIMENSION STYLE		SCALE	DESIGN UNITS	THIRD ANGLE PROJECTION		
			MM ONLY		5:1	METRIC			
					TITLE		COVER FOR SATA POWER CONNECTOR IDT TYPE		
			mm	INCH	DRAWN BY	DATE			
			4 PLACES	± ---	± ---	GRATE MA			2004/04/25
			3 PLACES	± ---	± ---	CHECKED BY			DATE
			2 PLACES	± 0.15	± ---	YAJUN	2004/04/25	MOLEX INCORPORATED	
			1 PLACE	± 0.25	± ---	APPROVED BY	DATE		
			ANGULAR ± 1 °		SAM	2004/04/25			
			DRAFT WHERE APPLICABLE MUST REMAIN WITHIN DIMENSIONS		MATERIAL NO.		DOCUMENT NO.		SHEET NO.
SEE TABLE		SD-67926-004			1 OF 1				
THIS DRAWING CONTAINS INFORMATION THAT IS PROPRIETARY TO MOLEX INCORPORATED AND SHOULD NOT BE USED WITHOUT WRITTEN PERMISSION									

9 8 7 6 5 4 3 2 1