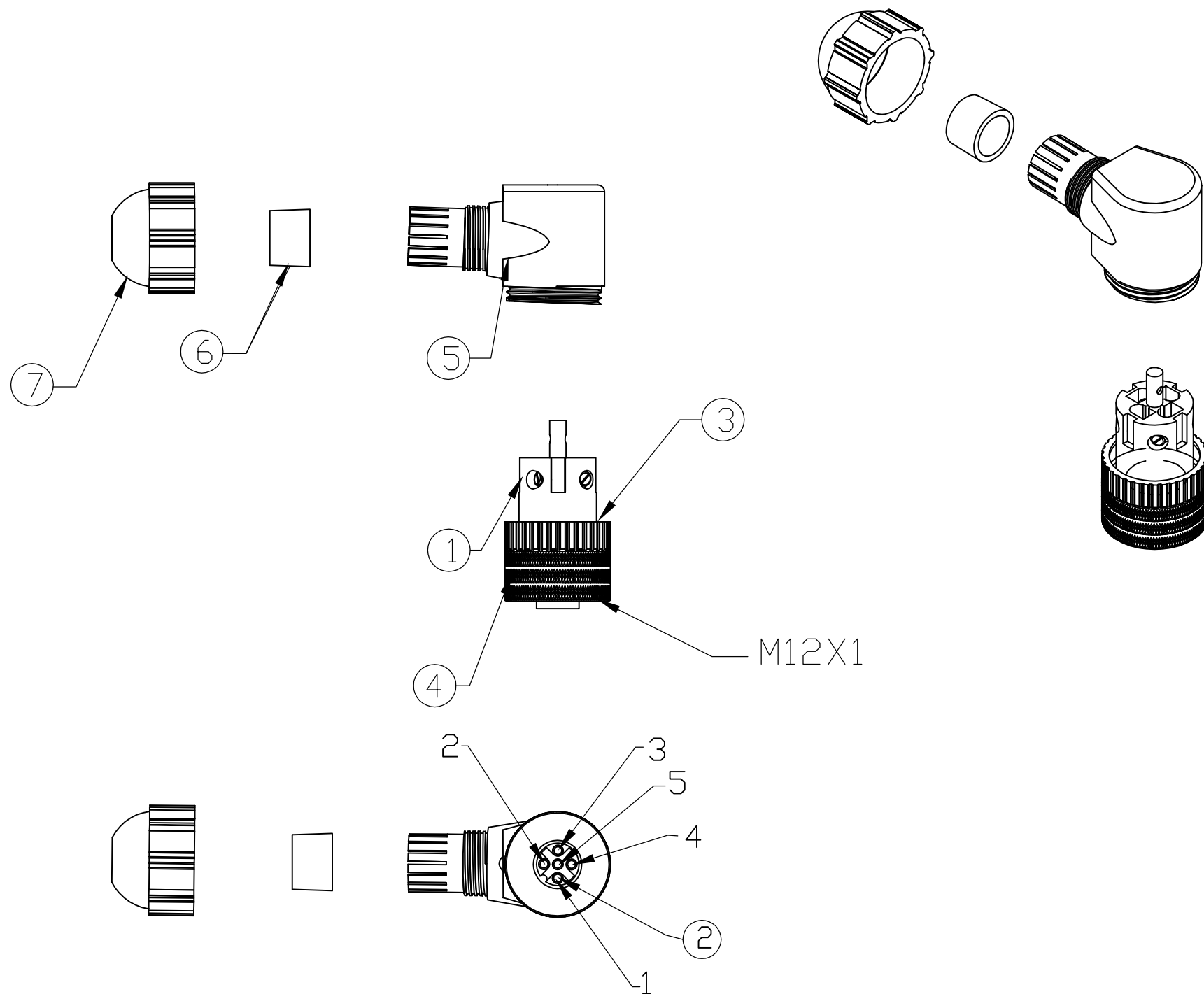
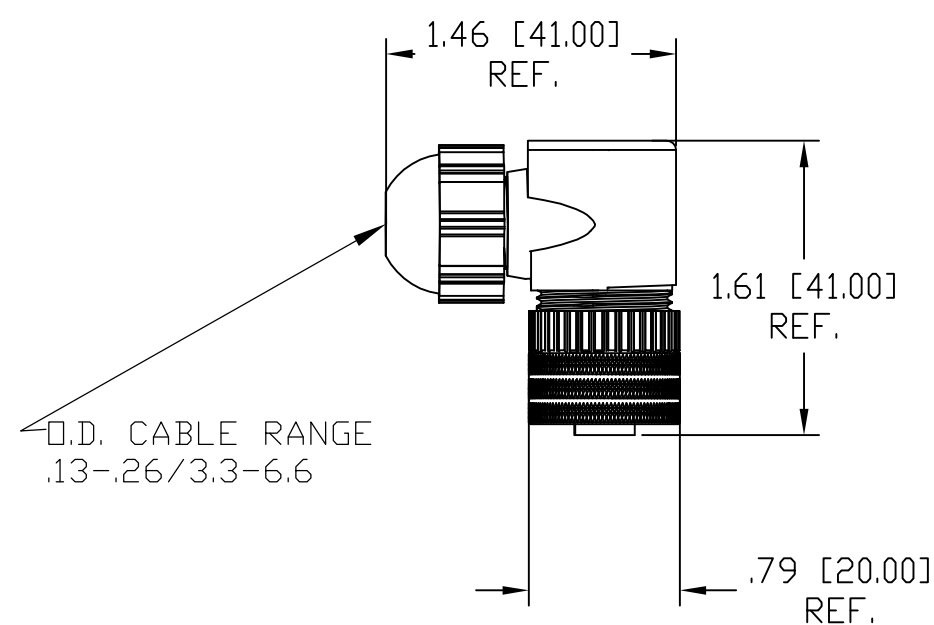


MATERIAL NUMBER	ENGINEERING NUMBER
1200710044	8A5001-31







FEMALE FACE VIEW

1	
2	
3	
4	
5	

WIRING CHART

VOLTAGE RATING	30VAC/36VDC
AMPERAGE RATING	4 AMPS
PROTECTION	IP67
OPERATING TEMPERATURE	-25°C TO 90°C
CSA CERTIFICATIONS	CSA CERTIFIED, FILE NO. LR6837

ITEM		COMPONENT	MATERIAL	FINISH
1	1	INSERT	POLYAMIDE	BLACK
2	5	CONTACTS	COPPER ALLOY	SILVER PLATED
3	1	O-RING	NITRILE	BLACK
4	1	COUPLING NUT	BRASS	NICKEL PLATED
5	1	MOLDED BODY	POLYAMIDE	BLACK
6	1	GROMMET	NITRILE	BLACK
7	1	CORD GRIP BODY	POLYAMIDE	BLACK

RELEASE	EC NO: WEU2010-0045	DRWN: TWOLDEGE	8/18/09	---	DESCRIPTION	QUALITY SYMBOL	GENERAL TOLERANCES (UNLESS SPECIFIED)			DIMENSION STYLE		SCALE	DESIGN UNITS	 THIRD ANGLE PROJECTION		
	CHK'D: BWOODMAN	APPR: JFMURPHY	2009/08/21	A			REV	 = 0  = 0	<div>mm</div>	<div>INCH</div>	<div>DRAWN BY</div>	<div>DATE</div>	TITLE			
									4 PLACES	±----	±----	TWOLDEGE	2009/08/18		MIC 5P FEMALE ATTACH 90D .13-.26 O.D. CABLE RANGE PG7 CABLE FITTING	
									3 PLACES	±----	±----	CHECKED BY	DATE			
									2 PLACES	±----	±.01	BWOODMAN	2009/08/18			
1 PLACE	±0.3	±----	APPROVED BY	DATE	 MOLEX INCORPORATED											
ANGULAR ±----°			----	----												
DRAFT WHERE APPLICABLE MUST REMAIN WITHIN DIMENSIONS			MATERIAL NO. 1200710044		DOCUMENT NO. SD-120071-010		SHEET NO. 1 OF 1									
SIZE C		THIS DRAWING CONTAINS INFORMATION THAT IS PROPRIETARY TO MOLEX INCORPORATED AND SHOULD NOT BE USED WITHOUT WRITTEN PERMISSION														