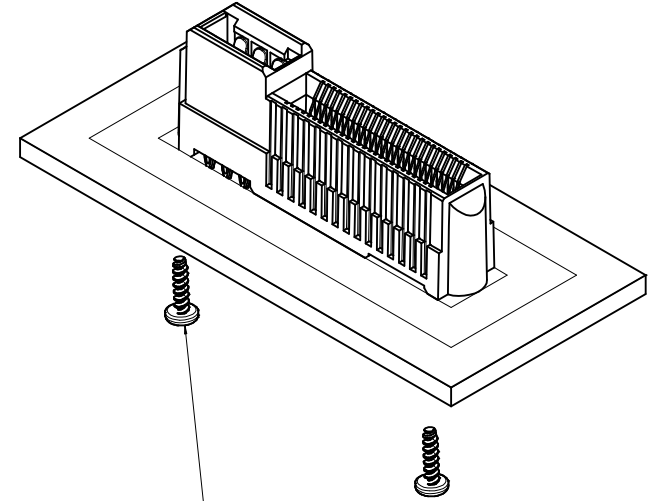
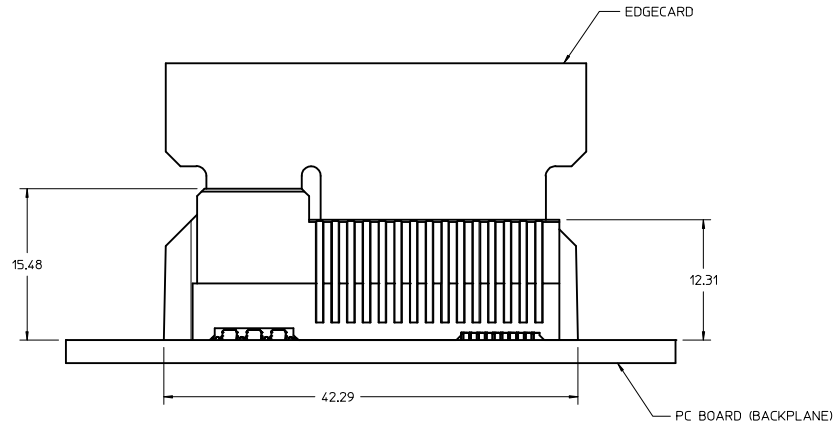
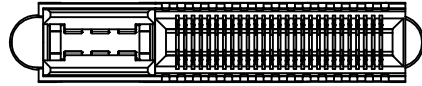
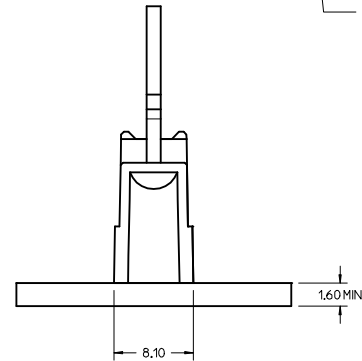


P.C. BOARD MOUNTING




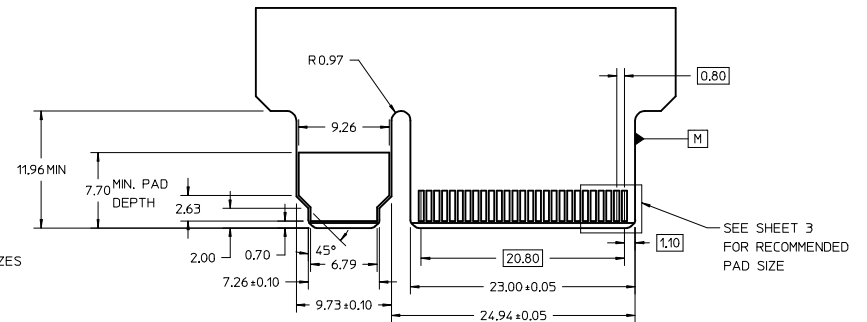
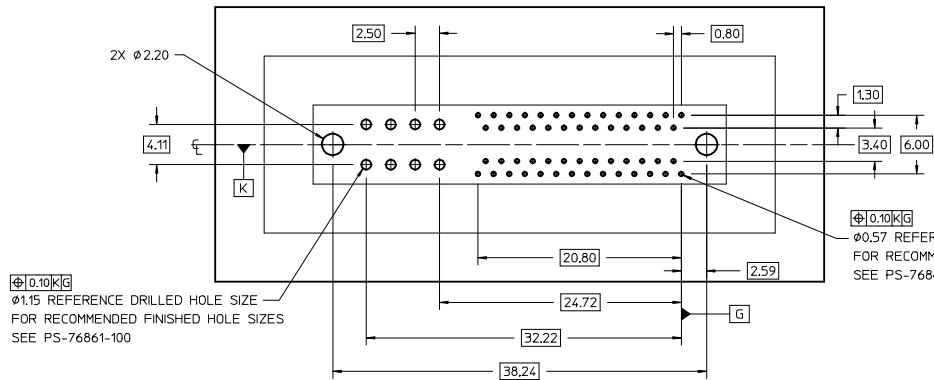
RECOMMENDED THREAD-FORMING SCREW
M1.8x8 (NOT SUPPLIED BY MOLEX)
SEE NOTE 5



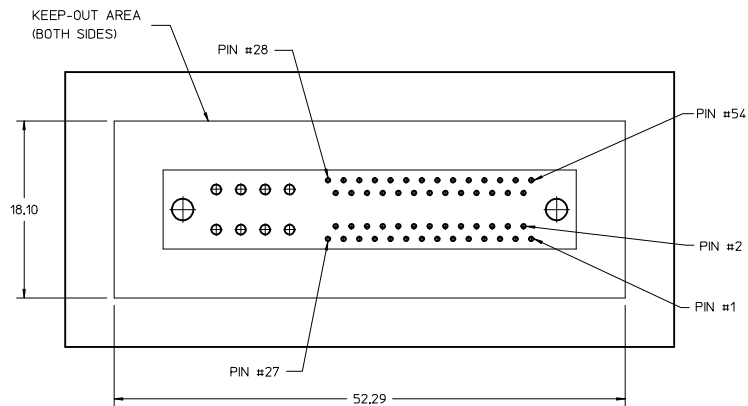
NOTES:

1. MATERIAL:
HOUSING - GLASS FILLED THERMOPLASTIC, 94-V0, BLACK
TERMINALS - COPPER ALLOY
2. FINISH:
CONTACT AREA: HARD GOLD -0.76 MICROMETERS MINIMUM OVER 3.80 MICRO METER NICKEL
COMPLIANT AREA: TIN - 0.76/1.52 MICROMETERS OVER NICKEL
3. REFER TO PS-76861-100 PRODUCT SPECIFICATION FOR ALL ELECTRICAL, MECHANICAL AND ENVIRONMENTAL SPECIFICATIONS.
4. REFER TO PK-170545-5000 FOR ALL PACKAGING SPECIFICATIONS.
5. REFER TO AS-76693-100 FOR APPLICATION SPECIFICATIONS.
6. PROCESSING: PRESSFIT TO PC BOARD.
7. MATING PC BOARD THICKNESS = 2.36±0.10% OVER CONTACT PADS.
8. THIS PART CONFORMS TO CLASS B REQUIREMENTS OF COSMETIC SPEC PS-45499-002

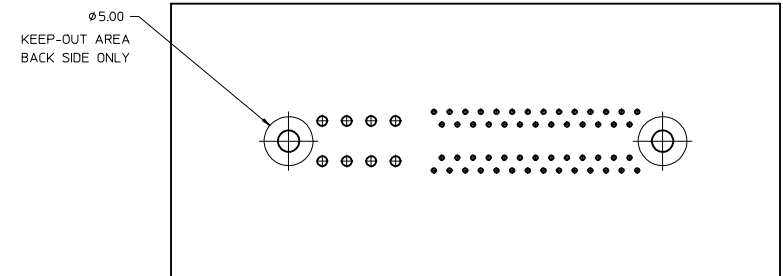
CURRENT EDGE CARD WIDTH 17.00mm EC No: UCP 2016-4620 DRAWINGS D	REV DESCRIPTION 2016/06/01 2016/06/13 CHKD: APPR:DMCGMAN	QUALITY SYMBOLS		GENERAL TOLERANCES (UNLESS SPECIFIED)		DIMENSION STYLE MM ONLY		SCALE 4:1	DESIGN UNITS METRIC	 THIRD ANGLE PROJECTION	TITLE EDGELINE ESP30 12.5GB 0.093"PCB/0.8MM PITCH 54 CKTS molex	DOCUMENT NO. SD-170545-1054	SHEET NO. 1 OF 3
		▽=0	▽=0	▽=0	▽=0	4 PLACES ± ---	INCH	DRAWN BY MPOFF	DATE 2014/05/23				
		▽=0	▽=0	▽=0	▽=0	3 PLACES ± ---	INCH	CHECKED BY DMORGAN	DATE 2014/05/23				
		▽=0	▽=0	▽=0	▽=0	2 PLACES ± 0.13	INCH	APPROVED BY SMILLER	DATE 2014/07/23				
		▽=0	▽=0	▽=0	▽=0	1 PLACE ± 0.25	INCH						
				ANGULAR ± 2 °		MATERIAL NO. 170545-1054		DRAFT WHERE APPLICABLE MUST REMAIN WITHIN DIMENSIONS		SIZE D		THIS DRAWING CONTAINS INFORMATION THAT IS PROPRIETARY TO MOLEX INCORPORATED AND SHOULD NOT BE USED WITHOUT WRITTEN PERMISSION	





EDGECARD LAYOUT



MOTHER BOARD HOLE LAYOUT
(COMPONENT SIDE)

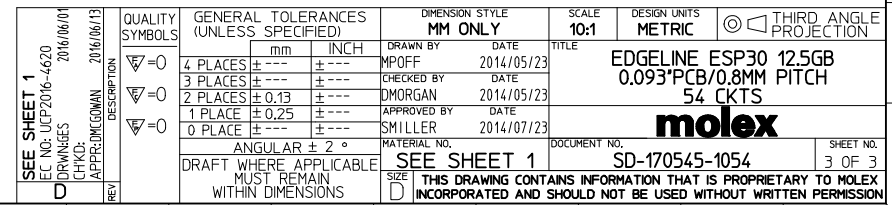


MOTHER BOARD HOLE LAYOUT
(BACK SIDE)

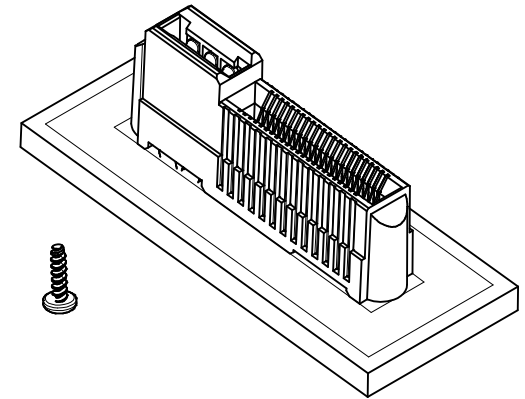
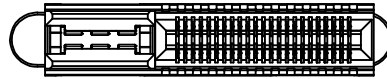
SEE SHEET 1 EC NO: UCP2016-4620 DRAWINGES CHKD: APPROV: GOWAN REV	2016/06/01 2016/06/13	DESCRIPTION	QUALITY SYMBOLS	GENERAL TOLERANCES (UNLESS SPECIFIED)		DIMENSION STYLE		SCALE	DESIGN UNITS		THIRD ANGLE PROJECTION	
				MM ONLY		4:1	METRIC					
						DRAWN BY		DATE	TITLE			
						CHECKED BY		DATE	MATERIAL NO.			
						APPROVED BY		DATE	DOCUMENT NO.			
			▽=0	4 PLACES ±	±	MM	INCH	MP	2014/05/23	EDGE LINE ESP30 12.5GB		
			▽=0	3 PLACES ±	±	MM	INCH	DM	2014/05/23	0.093"PCB/0.8MM PITCH		
			▽=0	2 PLACES ±	0.13	MM	INCH	SM	2014/07/23	54 CKTS		
				1 PLACE ±	0.25	MM	INCH					
				0 PLACE ±		MM	INCH					
				ANGULAR ± 2 °		MATERIAL NO.		DOCUMENT NO.		SHEET NO.		
				DRAFT WHERE APPLICABLE MUST REMAIN WITHIN DIMENSIONS		SEE SHEET 1		SD-170545-1054		2 OF 3		
						SIZE		THIS DRAWING CONTAINS INFORMATION THAT IS PROPRIETARY TO MOLEX INCORPORATED AND SHOULD NOT BE USED WITHOUT WRITTEN PERMISSION				

[illegible]

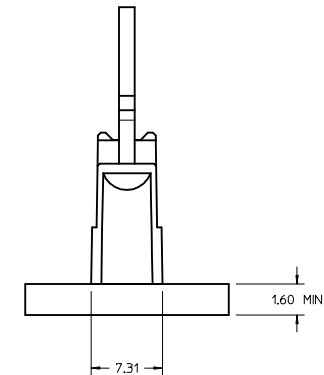
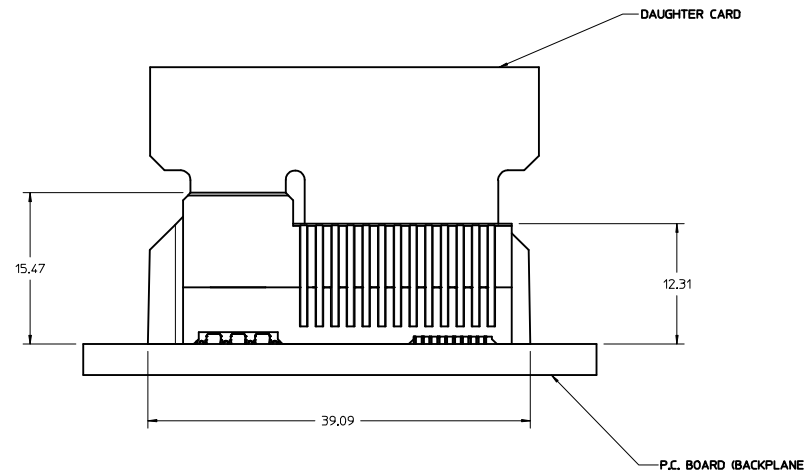
1. CONNECTOR LAND CONDITIONS SHALL MEET THE MOST CURRENT REVISION OF PCB SPECIFICATION IPC-6012C-2010 SECTION 3.5.4.4.
2. DIMENSIONS APPLY TO LANDS ON BOTH SIDES OF THE BOARD.
3. THE THICKNESS OF THE OUTER METAL LAYERS, INCLUDING FOIL, COPPER PLATING, AND THE PROTECTIVE SURFACE FINISH, SHALL BE 0.066mm MAXIMUM.
4. CHAMFER ROUGHNESS NOT TO EXCEED 3.17 MICROMETERS.
5. CHAMFER PROCESS SHALL NOT DAMAGE THE GOLD EDGE LANDS.
6. EDGE/CARD CHAMFER NOT TO GO THROUGH GOLD LANDS.
7. 0.03mm MAXIMUM PLATING OVERHANG ON ALL GOLD LAND EDGES.
8. MOLEX RECOMMENDS NO TIE-BARS ON THE LEADING EDGE OF THE GOLD LAND. IF TIE-BARS ARE USED, THEY SHALL BE PLACED TO ONE SIDE OF THE GOLD LAND, APPLIES TO ALL GOLD LANDS.



P.C. BOARD MOUNTING



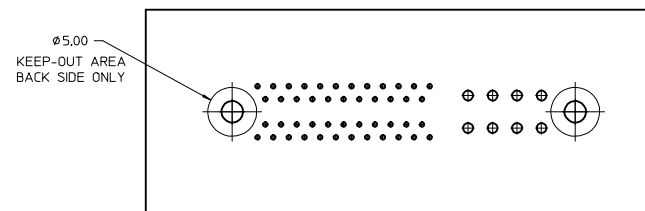
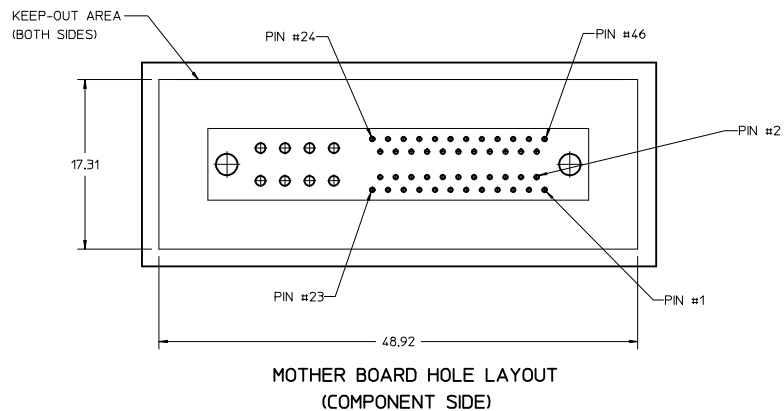
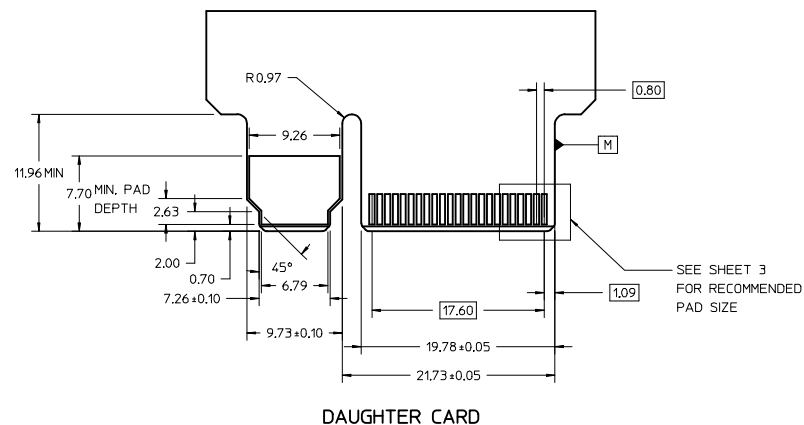
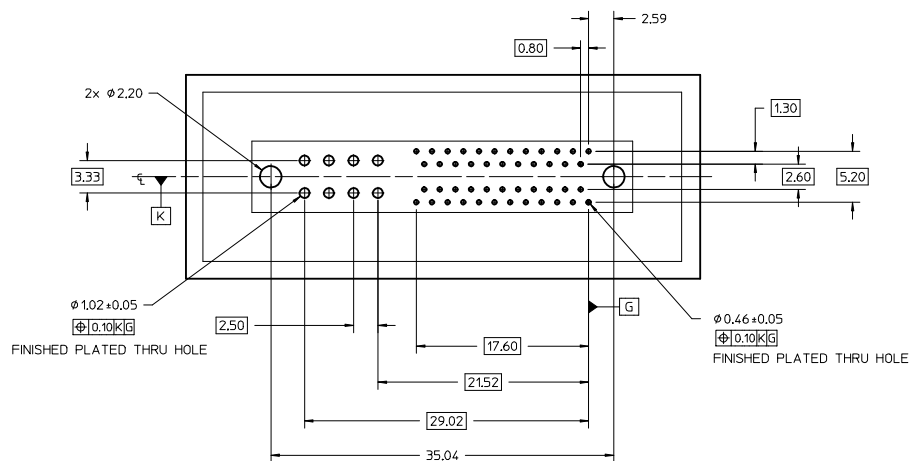
RECOMMENDED THREAD-FORMING SCREW
M1,8x8 (NOT SUPPLIED BY MOLEX)
SEE NOTE 8



NOTES:

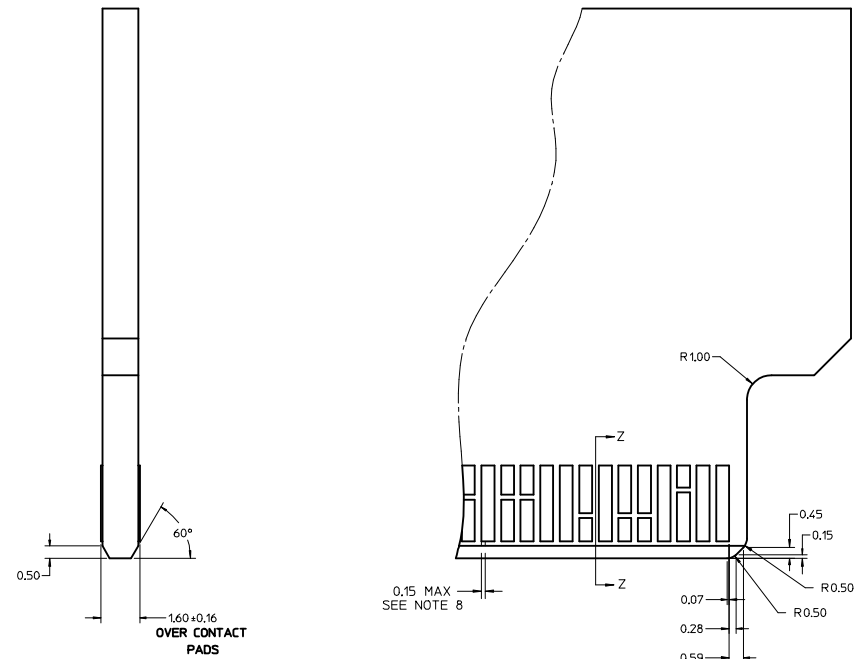
1. MATERIAL:
HOUSING - GLASS FILLED THERMOPLASTIC, 94-V0, BLACK
TERMINALS - COPPER ALLOY
2. FINISH:
CONTACT AREA: HARD GOLD -0.76 μ m MIN OVER 3.80 μ NICKEL
COMPLIANT AREA: TIN - 0.76/152 μ m OVER NICKEL
3. REFER TO PS-76861-100 PRODUCT SPECIFICATION FOR ALL ELECTRICAL, MECHANICAL AND ENVIRONMENTAL SPECIFICATIONS.
4. REFER TO PK-76861-900 FOR ALL PACKAGING SPECIFICATIONS.
5. PROCESSING: PRESSFIT TO PC BOARD.
6. MATING PC BOARD THICKNESS = 1.60 \pm 0.16MM OVER CONTACT PADS.
7. THIS PART CONFORMS TO CLASS B REQUIREMENTS OF COSMETIC SPEC PS-45499-002.
8. REFER TO APPLICATION SPECIFICATION AS-76693-100 FOR MORE DETAILS

CURRENT EDGE CARD WIDTH 10.16mm EC NO: UCP 2016-4620 DRAWN BY: 2016/06/02 CHKD: 2016/06/13 APPROVED: GOMAN	QUALITY SYMBOLS ▽=0 ▽=0 ▽=0	GENERAL TOLERANCES (UNLESS SPECIFIED)		DIMENSION STYLE MM ONLY		SCALE 4:1	DESIGN UNITS METRIC	THIRD ANGLE PROJECTION		
				DRAWN BY DROSCA		DATE 12/02/2008	TITLE EDGELINE+LPH 12.5GB 0.062"PCB/0.8MM PITCH 46 CKTS molex			
				CHECKED BY JCOMERC I		DATE 12/02/2008				
				APPROVED BY JCOMERC I		DATE 2009/08/04				
		MATERIAL NO. 76861-1000		DOCUMENT NO. SD-76861-100		SHEET NO. 1 OF 3				
CORRECT EDGE CARD WIDTH 10.16mm EC NO: UCP 2016-4620 DRAWN BY: 2016/06/02 CHKD: 2016/06/13 APPROVED: GOMAN		QUALITY SYMBOLS ▽=0 ▽=0 ▽=0		GENERAL TOLERANCES (UNLESS SPECIFIED)		DIMENSION STYLE MM ONLY		SCALE 4:1	DESIGN UNITS METRIC	THIRD ANGLE PROJECTION
				DRAWN BY DROSCA		DATE 12/02/2008	TITLE EDGELINE+LPH 12.5GB 0.062"PCB/0.8MM PITCH 46 CKTS molex			
				CHECKED BY JCOMERC I		DATE 12/02/2008				
				APPROVED BY JCOMERC I		DATE 2009/08/04				
				MATERIAL NO. 76861-1000		DOCUMENT NO. SD-76861-100		SHEET NO. 1 OF 3		
CORRECT EDGE CARD WIDTH 10.16mm EC NO: UCP 2016-4620 DRAWN BY: 2016/06/02 CHKD: 2016/06/13 APPROVED: GOMAN		QUALITY SYMBOLS ▽=0 ▽=0 ▽=0		GENERAL TOLERANCES (UNLESS SPECIFIED)		DIMENSION STYLE MM ONLY		SCALE 4:1	DESIGN UNITS METRIC	THIRD ANGLE PROJECTION
				DRAWN BY DROSCA		DATE 12/02/2008	TITLE EDGELINE+LPH 12.5GB 0.062"PCB/0.8MM PITCH 46 CKTS molex			
				CHECKED BY JCOMERC I		DATE 12/02/2008				
				APPROVED BY JCOMERC I		DATE 2009/08/04				
				MATERIAL NO. 76861-1000		DOCUMENT NO. SD-76861-100		SHEET NO. 1 OF 3		
CORRECT EDGE CARD WIDTH 10.16mm EC NO: UCP 2016-4620 DRAWN BY: 2016/06/02 CHKD: 2016/06/13 APPROVED: GOMAN		QUALITY SYMBOLS ▽=0 ▽=0 ▽=0		GENERAL TOLERANCES (UNLESS SPECIFIED)		DIMENSION STYLE MM ONLY		SCALE 4:1	DESIGN UNITS METRIC	THIRD ANGLE PROJECTION
				DRAWN BY DROSCA		DATE 12/02/2008	TITLE EDGELINE+LPH 12.5GB 0.062"PCB/0.8MM PITCH 46 CKTS molex			
				CHECKED BY JCOMERC I		DATE 12/02/2008				
				APPROVED BY JCOMERC I		DATE 2009/08/04				
				MATERIAL NO. 76861-1000		DOCUMENT NO. SD-76861-100		SHEET NO. 1 OF 3		
CORRECT EDGE CARD WIDTH 10.16mm EC NO: UCP 2016-4620 DRAWN BY: 2016/06/02 CHKD: 2016/06/13 APPROVED: GOMAN		QUALITY SYMBOLS ▽=0 ▽=0 ▽=0		GENERAL TOLERANCES (UNLESS SPECIFIED)		DIMENSION STYLE MM ONLY		SCALE 4:1	DESIGN UNITS METRIC	THIRD ANGLE PROJECTION
				DRAWN BY DROSCA		DATE 12/02/2008	TITLE EDGELINE+LPH 12.5GB 0.062"PCB/0.8MM PITCH 46 CKTS molex			
				CHECKED BY JCOMERC I		DATE 12/02/2008				
				APPROVED BY JCOMERC I		DATE 2009/08/04				
				MATERIAL NO. 76861-1000		DOCUMENT NO. SD-76861-100		SHEET NO. 1 OF 3		
CORRECT EDGE CARD WIDTH 10.16mm EC NO: UCP 2016-4620 DRAWN BY: 2016/06/02 CHKD: 2016/06/13 APPROVED: GOMAN		QUALITY SYMBOLS ▽=0 ▽=0 ▽=0		GENERAL TOLERANCES (UNLESS SPECIFIED)		DIMENSION STYLE MM ONLY		SCALE 4:1	DESIGN UNITS METRIC	THIRD ANGLE PROJECTION
				DRAWN BY DROSCA		DATE 12/02/2008	TITLE EDGELINE+LPH 12.5GB 0.062"PCB/0.8MM PITCH 46 CKTS molex			
				CHECKED BY JCOMERC I		DATE 12/02/2008				
				APPROVED BY JCOMERC I		DATE 2009/08/04				
				MATERIAL NO. 76861-1000		DOCUMENT NO. SD-76861-100		SHEET NO. 1 OF 3		
CORRECT EDGE CARD WIDTH 10.16mm EC NO: UCP 2016-4620 DRAWN BY: 2016/06/02 CHKD: 2016/06/13 APPROVED: GOMAN		QUALITY SYMBOLS ▽=0 ▽=0 ▽=0		GENERAL TOLERANCES (UNLESS SPECIFIED)		DIMENSION STYLE MM ONLY		SCALE 4:1	DESIGN UNITS METRIC	THIRD ANGLE PROJECTION
				DRAWN BY DROSCA		DATE 12/02/2008	TITLE EDGELINE+LPH 12.5GB 0.062"PCB/0.8MM PITCH 46 CKTS molex			
				CHECKED BY JCOMERC I		DATE 12/02/2008				
				APPROVED BY JCOMERC I		DATE 2009/08/04				
				MATERIAL NO. 76861-1000		DOCUMENT NO. SD-76861-100		SHEET NO. 1 OF 3		
CORRECT EDGE CARD WIDTH 10.16mm EC NO: UCP 2016-4620 DRAWN BY: 2016/06/02 CHKD: 2016/06/13 APPROVED: GOMAN		QUALITY SYMBOLS ▽=0 ▽=0 ▽=0		GENERAL TOLERANCES (UNLESS SPECIFIED)		DIMENSION STYLE MM ONLY		SCALE 4:1	DESIGN UNITS METRIC	THIRD ANGLE PROJECTION
				DRAWN BY DROSCA		DATE 12/02/2008	TITLE EDGELINE+LPH 12.5GB 0.062"PCB/0.8MM PITCH 46 CKTS molex			
				CHECKED BY JCOMERC I		DATE 12/02/2008				
				APPROVED BY JCOMERC I		DATE 2009/08/04				
				MATERIAL NO. 76861-1000		DOCUMENT NO. SD-76861-100		SHEET NO. 1 OF 3		
CORRECT EDGE CARD WIDTH 10.16mm EC NO: UCP 2016-4620 DRAWN BY: 2016/06/02 CHKD: 2016/06/13 APPROVED: GOMAN		QUALITY SYMBOLS ▽=0 ▽=0 ▽=0		GENERAL TOLERANCES (UNLESS SPECIFIED)		DIMENSION STYLE MM ONLY		SCALE 4:1	DESIGN UNITS METRIC	THIRD ANGLE PROJECTION
				DRAWN BY DROSCA		DATE 12/02/2008	TITLE EDGELINE+LPH 12.5GB 0.062"PCB/0.8MM PITCH 46 CKTS molex			
				CHECKED BY JCOMERC I		DATE 12/02/2008				
				APPROVED BY JCOMERC I		DATE 2009/08/04				
				MATERIAL NO. 76861-1000		DOCUMENT NO. SD-76861-100		SHEET NO. 1 OF 3		
CORRECT EDGE CARD WIDTH 10.16mm EC NO: UCP 2016-4620 DRAWN BY: 2016/06/02 CHKD: 2016/06/13 APPROVED: GOMAN		QUALITY SYMBOLS ▽=0 ▽=0 ▽=0		GENERAL TOLERANCES (UNLESS SPECIFIED)		DIMENSION STYLE MM ONLY		SCALE 4:1	DESIGN UNITS METRIC	THIRD ANGLE PROJECTION
				DRAWN BY DROSCA		DATE 12/02/2008	TITLE EDGELINE+LPH 12.5GB 0.062"PCB/0.8MM PITCH 46 CKTS molex			
				CHECKED BY JCOMERC I		DATE 12/02/2008				
				APPROVED BY JCOMERC I		DATE 2009/08/04				
				MATERIAL NO. 76861-1000		DOCUMENT NO. SD-76861-100		SHEET NO. 1 OF 3		
CORRECT EDGE CARD WIDTH 10.16mm EC NO: UCP 2016-4620 DRAWN BY: 2016/06/02 CHKD: 2016/06/13 APPROVED: GOMAN		QUALITY SYMBOLS ▽=0 ▽=0 ▽=0		GENERAL TOLERANCES (UNLESS SPECIFIED)		DIMENSION STYLE MM ONLY		SCALE 4:1	DESIGN UNITS METRIC	THIRD ANGLE PROJECTION
				DRAWN BY DROSCA		DATE 12/02/2008	TITLE EDGELINE+LPH 12.5GB 0.062"PCB/0.8MM PITCH 46 CKTS molex			
				CHECKED BY JCOMERC I		DATE 12/02/2008				
				APPROVED BY JCOMERC I		DATE 2009/08/04				
				MATERIAL NO. 76861-1000		DOCUMENT NO. SD-76861-100		SHEET NO. 1 OF 3		
CORRECT EDGE CARD WIDTH 10.16mm EC NO: UCP 2016-4620 DRAWN BY: 2016/06/02 CHKD: 2016/06/13 APPROVED: GOMAN		QUALITY SYMBOLS ▽=0 ▽=0 ▽=0		GENERAL TOLERANCES (UNLESS SPECIFIED)		DIMENSION STYLE MM ONLY		SCALE 4:1	DESIGN UNITS METRIC	THIRD ANGLE PROJECTION
				DRAWN BY DROSCA		DATE 12/02/2008	TITLE EDGELINE+LPH 12.5GB 0.062"PCB/0.8MM PITCH 46 CKTS molex			
				CHECKED BY JCOMERC I		DATE 12/02/2008				
				APPROVED BY JCOMERC I		DATE 2009/08/04				
				MATERIAL NO. 76861-1000		DOCUMENT NO. SD-76861-100		SHEET NO. 1 OF 3		
CORRECT EDGE CARD WIDTH 10.16mm EC NO: UCP 2016-4620 DRAWN BY: 2016/06/02 CHKD: 2016/06/13 APPROVED: GOMAN		QUALITY SYMBOLS ▽=0 ▽=0 ▽=0		GENERAL TOLERANCES (UNLESS SPECIFIED)		DIMENSION STYLE MM ONLY		SCALE 4:1	DESIGN UNITS METRIC	THIRD ANGLE PROJECTION
				DRAWN BY DROSCA		DATE 12/02/2008	TITLE EDGELINE+LPH 12.5GB 0.062"PCB/0.8MM PITCH 46 CKTS molex			
				CHECKED BY JCOMERC I		DATE 12/02/2008				
				APPROVED BY JCOMERC I		DATE 2009/08/04				
				MATERIAL NO. 76861-1000		DOCUMENT NO. SD-76861-100		SHEET NO. 1 OF 3		
CORRECT EDGE CARD WIDTH 10.16mm EC NO: UCP 2016-4620 DRAWN BY: 2016/06/02 CHKD: 2016/06/13 APPROVED: GOMAN		QUALITY SYMBOLS ▽=0 ▽=0 ▽=0		GENERAL TOLERANCES (UNLESS SPECIFIED)		DIMENSION STYLE MM ONLY		SCALE 4:1	DESIGN UNITS METRIC	THIRD ANGLE PROJECTION
				DRAWN BY DROSCA		DATE 12/02/2008	TITLE EDGELINE+LPH 12.5GB 0.062"PCB/0.8MM PITCH 46 CKTS molex			
				CHECKED BY JCOMERC I		DATE 12/02/2008				
				APPROVED BY JCOMERC I		DATE 2009/08/04				
				MATERIAL NO. 76861-1000		DOCUMENT NO. SD-76861-100		SHEET NO. 1 OF 3		
CORRECT EDGE CARD WIDTH 10.16mm EC NO: UCP 2016-4620 DRAWN BY: 2016/06/02 CHKD: 2016/06/13 APPROVED: GOMAN		QUALITY SYMBOLS ▽=0 ▽=0 ▽=0		GENERAL TOLERANCES (UNLESS SPECIFIED)		DIMENSION STYLE MM ONLY		SCALE 4:1	DESIGN UNITS METRIC	THIRD ANGLE PROJECTION
				DRAWN BY DROSCA		DATE 12/02/2008	TITLE EDGELINE+LPH 12.5GB 0.062"PCB/0.8MM PITCH 46 CKTS molex			
				CHECKED BY JCOMERC I		DATE 12/02/2008				
				APPROVED BY JCOMERC I		DATE 2009/08/04				
				MATERIAL NO. 76861-1000		DOCUMENT NO. SD-76861-100		SHEET NO. 1 OF 3		
CORRECT EDGE CARD WIDTH 10.16mm EC NO: UCP 2016-4620 DRAWN BY: 2016/06/02 CHKD: 2016/06/13 APPROVED: GOMAN		QUALITY SYMBOLS ▽=0 ▽=0 ▽=0		GENERAL TOLERANCES (UNLESS SPECIFIED)		DIMENSION STYLE MM ONLY		SCALE 4:1	DESIGN UNITS METRIC	THIRD ANGLE PROJECTION
				DRAWN BY DROSCA		DATE 12/02/2008	TITLE EDGELINE+LPH 12.5GB 0.062"PCB/0.8MM PITCH 46 CKTS molex			
				CHECKED BY JCOMERC I		DATE 12/02/2008				
				APPROVED BY JCOMERC I		DATE 2009/08/04				
				MATERIAL NO. 76861-1000		DOCUMENT NO. SD-76861-100		SHEET NO. 1 OF 3		
CORRECT EDGE CARD WIDTH 10.16mm EC NO: UCP 2016-4620 DRAWN BY: 2016/06/02 CHKD: 2016/06/13 APPROVED: GOMAN		QUALITY SYMBOLS ▽=0 ▽=0 ▽=0		GENERAL TOLERANCES (UNLESS SPECIFIED)		DIMENSION STYLE MM ONLY		SCALE 4:1	DESIGN UNITS METRIC	THIRD ANGLE PROJECTION
				DRAWN BY DROSCA		DATE 12/02/2008	TITLE EDGELINE+LPH 12.5GB 0.062"PCB/0.8MM PITCH 46 CKTS molex			
				CHECKED BY JCOMERC I		DATE 12/02/2008				
				APPROVED BY JCOMERC I		DATE 2009/08/04				
				MATERIAL NO. 76861-1000		DOCUMENT NO. SD-76861-100		SHEET NO. 1 OF 3		
CORRECT EDGE CARD WIDTH 10.16mm EC NO: UCP 2016-4620 DRAWN BY: 2016/06/02 CHKD: 2016/06/13 APPROVED: GOMAN		QUALITY SYMBOLS ▽=0 ▽=0 ▽=0		GENERAL TOLERANCES (UNLESS SPECIFIED)		DIMENSION STYLE MM ONLY		SCALE 4:1	DESIGN UNITS METRIC	THIRD ANGLE PROJECTION
				DRAWN BY DROSCA		DATE 12/02/2008	TITLE EDGELINE+LPH 12.5GB 0.062"PCB/0.8MM PITCH 46 CKTS molex			
				CHECKED BY JCOMERC I		DATE 12/02/2008				
				APPROVED BY JCOMERC I		DATE 2009/08/04				
				MATERIAL NO. 76861-1000		DOCUMENT NO. SD-76861-100		SHEET NO. 1 OF 3		
CORRECT EDGE CARD WIDTH 10.16mm EC NO: UCP 2016-4620 DRAWN BY: 2016/06/02 CHKD: 2016/06/13 APPROVED: GOMAN		QUALITY SYMBOLS ▽=0 ▽=0 ▽=0		GENERAL TOLERANCES (UNLESS SPECIFIED)		DIMENSION STYLE MM ONLY		SCALE 4:1	DESIGN UNITS METRIC	THIRD ANGLE PROJECTION
				DRAWN BY DROSCA		DATE 12/02/2008	TITLE EDGELINE+LPH 12.5GB 0.062"PCB/0.8MM PITCH 46 CKTS molex			
				CHECKED BY JCOMERC I		DATE 12/02/2008				
				APPROVED BY JCOMERC I		DATE 2009/08/04				
				MATERIAL NO. 76861-1000		DOCUMENT NO. SD-76861-100		SHEET NO. 1 OF 3		
CORRECT EDGE CARD WIDTH 10.16mm EC NO: UCP 2016-4620 DRAWN BY: 2016/06/02 CHKD: 2016/06/13 APPROVED: GOMAN		QUALITY SYMBOLS ▽=0 ▽=0 ▽=0		GENERAL TOLERANCES (UNLESS SPECIFIED)		DIMENSION STYLE MM ONLY		SCALE 4:1	DESIGN UNITS METRIC	THIRD ANGLE PROJECTION
				DRAWN BY DROSCA		DATE 12/02/2008	TITLE EDGELINE+LPH 12.5GB 0.062"PCB/0.8MM PITCH 46 CKTS molex			
				CHECKED BY JCOMERC I		DATE 12/02/2008				
				APPROVED BY JCOMERC I		DATE 2009/08/04				
				MATERIAL NO. 76861-1000		DOCUMENT NO. SD-76861-100		SHEET NO. 1 OF 3		
CORRECT EDGE CARD WIDTH 10.16mm EC NO: UCP 2016-4620 DRAWN BY: 2016/06/02 CHKD: 2016/06/13 APPROVED: GOMAN		QUALITY SYMBOLS ▽=0 ▽=0 ▽=0		GENERAL TOLERANCES (UNLESS SPECIFIED)		DIMENSION STYLE MM ONLY		SCALE 4:1	DESIGN UNITS METRIC	THIRD ANGLE PROJECTION
				DRAWN BY DROSCA		DATE 12/02/2008	TITLE EDGELINE+LPH 12.5GB 0.062"PCB/0.8MM PITCH 46 CKTS molex			
				CHECKED BY JCOMERC I		DATE 12/02/2008				
				APPROVED BY JCOMERC I		DATE 2009/08/04				
				MATERIAL NO. 76861-1000		DOCUMENT NO. SD-76861-100		SHEET NO. 1 OF 3		
CORRECT EDGE CARD WIDTH 10.16mm EC NO: UCP 2016-4620 DRAWN BY: 2016/06/02 CHKD: 2016/06/13 APPROVED: GOMAN		QUALITY SYMBOLS ▽=0 ▽=0 ▽=0		GENERAL TOLERANCES (UNLESS SPECIFIED)		DIMENSION STYLE MM ONLY		SCALE 4:1	DESIGN UNITS METRIC	THIRD ANGLE PROJECTION
				DRAWN BY DROSCA		DATE 12/02/2008	TITLE EDGELINE+LPH 12.5GB 0.062"PCB/0.8MM PITCH 46 CKTS molex			
				CHECKED BY JCOMERC I		DATE 12/02/2008				
				APPROVED BY JCOMERC I		DATE 2009/08/04				
				MATERIAL NO. 76861-1000		DOCUMENT NO. SD-76861-100		SHEET NO. 1 OF 3		
CORRECT EDGE CARD WIDTH 10.16mm EC NO: UCP 2016-4620 DRAWN BY: 2016/06/02 CHKD: 2016/06/13 APPROVED: GOMAN		QUALITY SYMBOLS ▽=0 ▽=0 ▽=0		GENERAL TOLERANCES (UNLESS SPECIFIED)		DIMENSION STYLE MM ONLY		SCALE 4:1	DESIGN UNITS METRIC	THIRD ANGLE PROJECTION
				DRAWN BY DROSCA		DATE 12/02/2008	TITLE EDGELINE+LPH 12.5GB 0.062"PCB/0.8MM PITCH 46 CKTS molex			
				CHECKED BY JCOMERC I		DATE 12/02/2008				
				APPROVED BY JCOMERC I		DATE 2009/08/04				
				MATERIAL NO. 76861-1000		DOCUMENT NO. SD-76861-100		SHEET NO. 1 OF 3		
CORRECT EDGE CARD WIDTH 10.16mm EC NO: UCP 2016-4620 DRAWN BY: 2016/06/02 CHKD: 2016/06/13 APPROVED: GOMAN		QUALITY SYMBOLS ▽=0 ▽=0 ▽=0		GENERAL TOLERANCES (UNLESS SPECIFIED)		DIMENSION STYLE MM ONLY		SCALE 4:1	DESIGN UNITS METRIC	THIRD ANGLE PROJECTION
				DRAWN BY DROSCA		DATE 12/02/2008	TITLE EDGELINE+LPH 12.5GB 0.062"PCB/0.8MM PITCH 46 CKTS molex			
				CHECKED BY JCOMERC I		DATE 12/02/2008				
				APPROVED BY JCOMERC I		DATE 2009/08/04				
				MATERIAL NO. 76861-1000		DOCUMENT NO. SD-76861-100		SHEET NO. 1 OF 3		
CORRECT EDGE CARD WIDTH 10.16mm EC NO: UCP 2016-4620 DRAWN BY: 2016/06/02 CHKD: 2016/06/13 APPROVED: GOMAN		QUALITY SYMBOLS ▽=0 ▽=0 ▽=0		GENERAL TOLERANCES (UNLESS SPECIFIED)		DIMENSION STYLE MM ONLY		SCALE 4:1	DESIGN UNITS METRIC	THIRD ANGLE PROJECTION
				DRAWN BY DROSCA		DATE 12/02/2008	TITLE EDGELINE+LPH 12.5GB 0.062"PCB/0.8MM PITCH 46 CKTS molex			
				CHECKED BY JCOMERC I		DATE 12/02/2008				
				APPROVED BY JCOMERC I		DATE 2009/08/04				
				MATERIAL NO. 76861-1000		DOCUMENT NO. SD-76861-100		SHEET NO. 1 OF 3		
CORRECT EDGE CARD WIDTH 10.16mm EC NO: UCP 2016-4620 DRAWN BY: 2016/06/02 CHKD: 2016/06/13 APPROVED: GOMAN		QUALITY SYMBOLS ▽=0 ▽=0 ▽=0		GENERAL TOLERANCES (UNLESS SPECIFIED)		DIMENSION STYLE MM ONLY		SCALE 4:1	DESIGN UNITS METRIC	THIRD ANGLE PROJECTION
				DRAWN BY DROSCA		DATE 12/02/2008	TITLE EDGELINE+LPH 12.5GB 0.062"PCB/0.8MM PITCH 46 CKTS molex			
				CHECKED BY JCOMERC I		DATE 12/02/2008				
				APPROVED BY JCOMERC I		DATE 2009/08/04				
				MATERIAL NO. 76861-1000		DOCUMENT NO. SD-76861-100		SHEET NO. 1 OF 3		
CORRECT EDGE CARD WIDTH 10										



REV	DESCRIPTION	QUALITY SYMBOLS	GENERAL TOLERANCES (UNLESS SPECIFIED)		DIMENSION STYLE	SCALE	DESIGN UNITS	THIRD ANGLE PROJECTION	TITLE	DOCUMENT NO.	SHEET NO.
			mm	INCH							
1	SEE SHEET 1	$\nabla=0$	4 PLACES ± 0.13	± 0.005	MM ONLY	4:1	METRIC		EDGELINE+LPH 12.5GB	SD-76861-100	2 OF 3
2	DRWINGS	$\nabla=0$	3 PLACES ± 0.13	± 0.005					0.062"PCB/0.8MM PITCH		
3	CHKD:	$\nabla=0$	2 PLACES ± 0.25	± 0.010					46 CKTS		
4	APPROV: GOMAN	$\nabla=0$	1 PLACE ± 0.25	± 0.010							
5	REV		0 PLACE ± 0.25	± 0.010							
			ANGULAR ± 2°		DRAWN BY		DATE				
			DRAFT WHERE APPLICABLE MUST REMAIN WITHIN DIMENSIONS		DROSCA		12/02/2008				
					CHECKED BY		DATE				
					JCOMERC I		12/02/2008				
					APPROVED BY		DATE				
					JCOMERC I		2009/08/04				
					MATERIAL NO.		DOCUMENT NO.				
					SEE SHEET 1		SD-76861-100				
					THIS DRAWING CONTAINS INFORMATION THAT IS PROPRIETARY TO MOLEX INCORPORATED AND SHOULD NOT BE USED WITHOUT WRITTEN PERMISSION						

SIDE 1



0.15 MAX
SEE NOTE 8

lb_frame_D_P_AM_T
Rev. G 2012/01/11