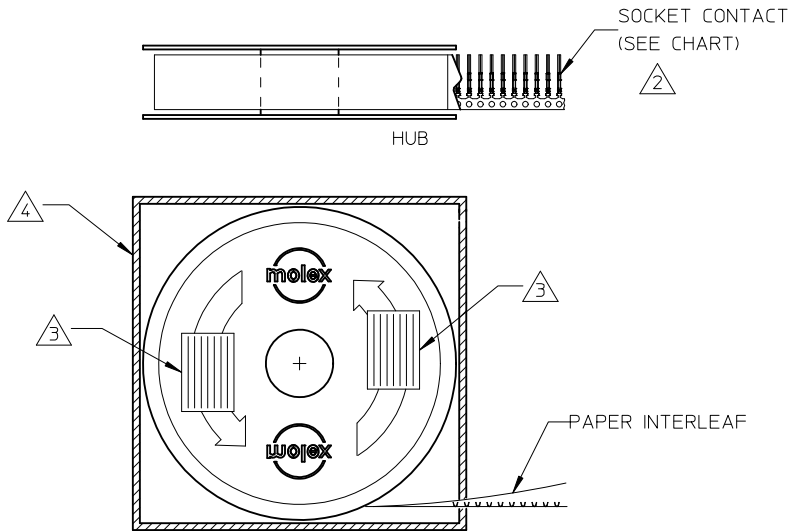


10	9	8	7
MATERIAL NO.	ENGINEERING NO.	DESCRIPTION	PLATING NOTE
830000110	83000-0110	LOOSE PIECE	△6
830009558	83000-9558	2.5K PER REEL	
830009559	83000-9559	50K PER REEL	
830009560	83000-9560	LOOSE PIECE	△7
830009561	83000-9561	2.5K PER REEL	
830009562	83000-9562	50K PER REEL	



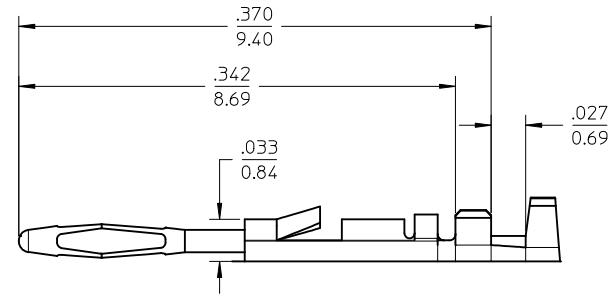
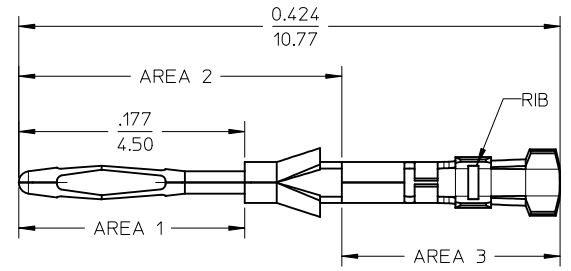
# SALES DRAWING

1. FOR PLATING SPECIFICATIONS SEE SHEET 2

- △2 CONTACT TO BE ORIENTED AS SHOWN.
- △3 IDENTIFICATION LABELS (2), (REEL).
- △4 IDENTIFICATION LABEL, (SHIPPING BOX).

<b>ENTER DESCRIPTION</b> EC NO: UCE2010-0026 DRWN:SBH CHKD: APPR: JEMURPHY 2009/08/11 2010/05/20	<b>DESCRIPTION</b> REV	<b>QUALITY SYMBOLS</b> ▽=0 ◻=0	<b>GENERAL TOLERANCES (UNLESS SPECIFIED)</b>	<b>DIMENSION STYLE</b> IN/MM	<b>SCALE</b> 10:1	<b>DESIGN UNITS</b> INCH	◎ ◻ THIRD ANGLE PROJECTION																													
		<table border="1"> <thead> <tr> <th></th> <th>mm</th> <th>INCH</th> </tr> </thead> <tbody> <tr> <td>4 PLACES</td> <td>± ---</td> <td>± ---</td> </tr> <tr> <td>3 PLACES</td> <td>± ---</td> <td>± .005</td> </tr> <tr> <td>2 PLACES</td> <td>± 0.13</td> <td>± .01</td> </tr> <tr> <td>1 PLACE</td> <td>± 0.25</td> <td>± ---</td> </tr> </tbody> </table>		mm	INCH	4 PLACES	± ---	± ---	3 PLACES	± ---	± .005	2 PLACES	± 0.13	± .01	1 PLACE	± 0.25	± ---	<table border="1"> <tr> <td>DRAWN BY</td> <td>DATE</td> <td>TITLE</td> </tr> <tr> <td>JLOMASTR</td> <td>04/10/13</td> <td rowspan="4"> <b>CONTACT, PIN CRIMP AND POKE COMMERCIAL MICRO D</b>   <b>MOLEX INCORPORATED</b> </td> </tr> <tr> <td>CHECKED BY</td> <td>DATE</td> </tr> <tr> <td>RDEROSS</td> <td>04/10/14</td> </tr> <tr> <td>APPROVED BY</td> <td>DATE</td> </tr> <tr> <td>RDEROSS</td> <td>04/10/15</td> <td> </td> </tr> </table>	DRAWN BY	DATE	TITLE	JLOMASTR	04/10/13	<b>CONTACT, PIN CRIMP AND POKE COMMERCIAL MICRO D</b>  <b>MOLEX INCORPORATED</b>	CHECKED BY	DATE	RDEROSS	04/10/14	APPROVED BY	DATE	RDEROSS	04/10/15		<b>MATERIAL NO.</b> SEE CHART	<b>DOCUMENT NO.</b> SD-83000-006	<b>SHEET NO.</b> 1 OF 2
			mm	INCH																																
		4 PLACES	± ---	± ---																																
3 PLACES	± ---	± .005																																		
2 PLACES	± 0.13	± .01																																		
1 PLACE	± 0.25	± ---																																		
DRAWN BY	DATE	TITLE																																		
JLOMASTR	04/10/13	<b>CONTACT, PIN CRIMP AND POKE COMMERCIAL MICRO D</b>  <b>MOLEX INCORPORATED</b>																																		
CHECKED BY	DATE																																			
RDEROSS	04/10/14																																			
APPROVED BY	DATE																																			
RDEROSS	04/10/15																																			
DRAFT WHERE APPLICABLE MUST REMAIN WITHIN DIMENSIONS	<b>SIZE</b> A3	THIS DRAWING CONTAINS INFORMATION THAT IS PROPRIETARY TO MOLEX INCORPORATED AND SHOULD NOT BE USED WITHOUT WRITTEN PERMISSION																																		

10	9	8	7
MATERIAL NO.	ENGINEERING NO.	DESCRIPTION	PLATING NOTE
830000110	83000-0110	LOOSE PIECE	△ 6
830009558	83000-9558	2.5K PER REEL	
830009559	83000-9559	50K PER REEL	
830009560	83000-9560	LOOSE PIECE	△ 7
830009561	83000-9561	2.5K PER REEL	
830009562	83000-9562	50K PER REEL	



△  
7 MATERIAL: BeCu, ALLOY C17200, .005(0.127) THICK  
CONDITION: 1/2 HARD PER QQ-C-533  
FINISH: GOLD/NICKEL/TIN.  
NICKEL PLATING ALL OVER - 50u INCH MIN. THICKNESS  
GOLD PLATING OVER NICKEL, 15u INCH MIN. THICKNESS AT AREA 1  
GOLD PLATING OVER NICKEL, 1u INCH MIN. THICKNESS AT AREA 2  
TIN PLATING OVER NICKEL, 100u INCH MIN. THICKNESS AT AREA 3

△  
6 MATERIAL: BeCu, ALLOY C17200, .005(0.127) THICK  
CONDITION: 1/2 HARD PER QQ-C-533  
FINISH: GOLD/NICKEL/TIN.  
NICKEL PLATING ALL OVER - 50u INCH MIN. THICKNESS  
GOLD PLATING OVER NICKEL, 50u INCH MIN. THICKNESS AT AREA 1  
GOLD PLATING OVER NICKEL, 1u INCH MIN. THICKNESS AT AREA 2  
TIN PLATING (PER MIL-T-10727) OVER NICKEL,  
100u INCH MIN. THICKNESS AT AREA 3.

△  
5 CONTACT CUTOFF TO BE FLUSH TO BELOW THIS SURFACE

4 WHEN TINES ARE DEFLECTED TO .033 (0.076) DIA MAX.  
THERE SHALL BE NO PERMANENT SET, NOR SHALL THE TINES  
STICK IN THE DOWN POSITION.

3 BURRS NOT TO EXCEED .002 (0.05)

2 ALL DIAMETERS TO BE Ⓢ TO WITHIN .002 (0.05)

1 CORNER RADI (INSIDE OR OUTSIDE) UNLESS STATED: .003 (0.076) MAX.

NOTES: UNLESS OTHERWISE SPECIFIED.

ENTER DESCRIPTION EC NO: UCE2010-0026 DRWN:SBH CHKD: APPR:JFMURPHY REV	2009/08/11	2010/05/20	DESCRIPTION
	2009/08/11	2010/05/20	DESCRIPTION

QUALITY SYMBOLS	GENERAL TOLERANCES (UNLESS SPECIFIED)	
	mm	INCH
▽=0	4 PLACES ± ---	± ---
∇=0	3 PLACES ± ---	± .005
	2 PLACES ± 0.13	± .01
	1 PLACE ± 0.25	± ---
	ANGULAR ± 1/2°	
	DRAFT WHERE APPLICABLE MUST REMAIN WITHIN DIMENSIONS	

DIMENSION STYLE		SCALE	DESIGN UNITS
IN/MM		10:1	INCH
DRAWN BY	DATE	TITLE	
JLOMASTR	04/10/13	CONTACT, PIN CRIMP AND POKE COMMERCIAL MICRO D	
CHECKED BY	DATE		
RDEROSS	04/10/14	MOLEX INCORPORATED	
APPROVED BY	DATE		
RDEROSS	04/10/15	DOCUMENT NO.	
MATERIAL NO.		SHEET NO.	
SEE CHART		SD-83000-006	
SIZE A3		2 OF 2	

THIRD ANGLE PROJECTION	
CONTACT, PIN CRIMP AND POKE COMMERCIAL MICRO D	
MOLEX INCORPORATED	
DOCUMENT NO. SD-83000-006	
SHEET NO. 2 OF 2	
THIS DRAWING CONTAINS INFORMATION THAT IS PROPRIETARY TO MOLEX INCORPORATED AND SHOULD NOT BE USED WITHOUT WRITTEN PERMISSION	