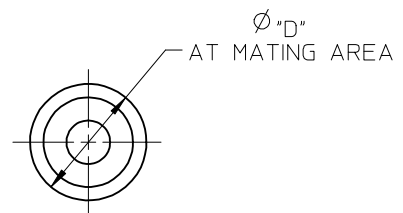
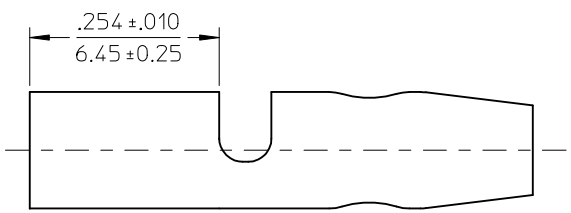
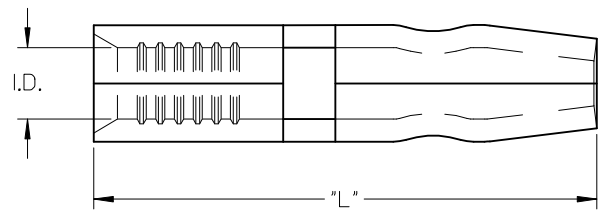


MATERIAL NUMBER	ENG. NUMBER	WIRE RANGE AWG	"I.D." MIN	"D" ±.002/0.05	"L" ±.010/0.25
190330001	A-159	22-18	.056/1.42	.182/4.62	.734/18.64
190330003	A-169	22-18	.056/1.42	.158/4.01	.680/17.27
190330005	B-179	16-14	.084/2.13	.182/4.62	.734/18.64
190330007	B-189	16-14	.084/2.13	.158/4.01	.680/17.27

(E)



SALES DRAWING

- NOTE(S):
1. MATERIAL: COPPER .032/0.81 THK
 2. FINISH: ELECTRO-TIN
 3. PARTS ARE ROHS COMPLIANT.

REMOVE TAPE SPECS. EC NO: IPG2015-0955 DRWNG: GRO JAS01 2014/11/26 CHKD: JMAGNE IL 2014/11/26 APPR: JMAGNE IL 2014/12/18	DESCRIPTION REV 1	QUALITY SYMBOLS	GENERAL TOLERANCES (UNLESS SPECIFIED)	DIMENSION STYLE	SCALE	DESIGN UNITS	THIRD ANGLE PROJECTION
		▼=0 ▽=0	mm INCH 4 PLACES ± --- ± --- 3 PLACES ± --- ± --- 2 PLACES ± --- ± --- 1 PLACE ± --- ± --- ANGULAR ± ---°	IN/MM DRAWN BY: RMARSHAL DATE: 92/09/29 CHECKED BY: RDEROSS DATE: 92/09/29 APPROVED BY: RDEROSS DATE: 92/09/29	INCH TITLE: KRIMPTITE MALE BULLET SNAP PLUG .180 AND .156	MOLEX INCORPORATED	SHEET NO. 1 OF 1
		DRAFT WHERE APPLICABLE MUST REMAIN WITHIN DIMENSIONS	MATERIAL NO. SEE CHART	DOCUMENT NO. SD-19033-001	THIS DRAWING CONTAINS INFORMATION THAT IS PROPRIETARY TO MOLEX INCORPORATED AND SHOULD NOT BE USED WITHOUT WRITTEN PERMISSION		