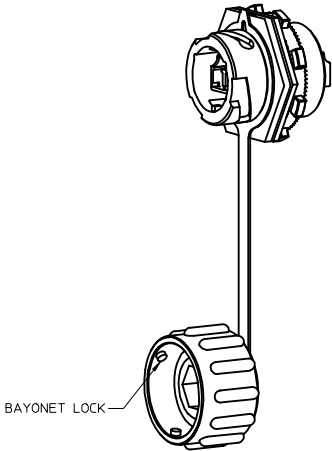
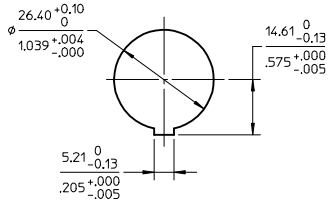


ADAPTER P/N	VERSION	CABLE TYPE
1060597250	WITH LOGO	MULTIMODE
1060597450	WITHOUT LOGO	MULTIMODE
1060597650	WITH LOGO	SINGLE MODE
1060597850	WITHOUT LOGO	SINGLE MODE

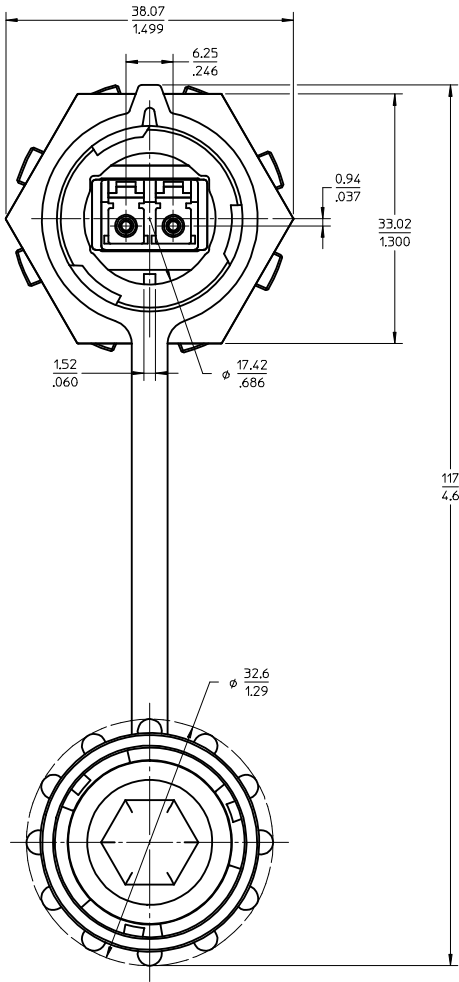
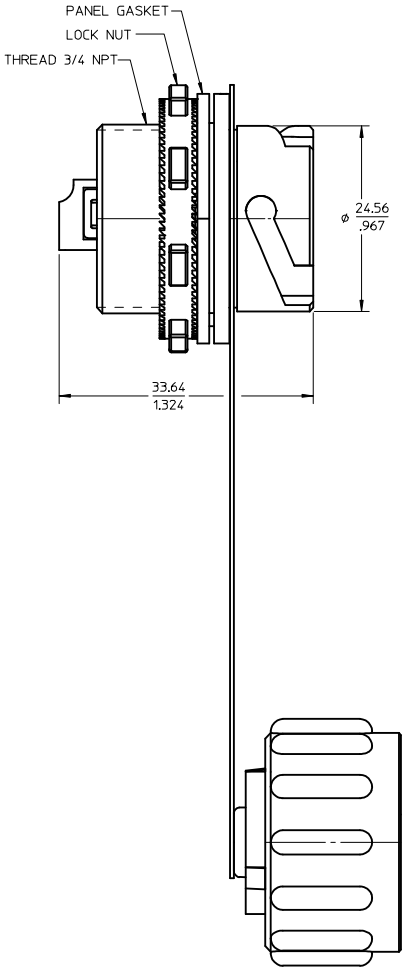


ISOMETRIC VIEW
SCALE 1:1



RECOMMENDED PANEL THICKNESS: .060"(1.5mm) - .312"(7.9mm)
RECOMMENDED MOUNTING CUTOUT
SCALE 1 : 1

- NOTE:
1. ALL DIMENSIONS ARE FOR REFERENCE ONLY.
 2. ADAPTER ASSEMBLY AND ITS COMPONENTS ARE COMPLIANT WITH EU DIRECTIVE 2002/95/EC ON THE RESTRICTION OF THE USE OF HAZARDOUS SUBSTANCES IN ELECTRICAL AND ELECTRONIC EQUIPMENT (RoHS).



ENTER DESCRIPTION EC NO: MF2013-0307 DRAWN: SADAUSKIENE 2012/11/27 CHKD: APPR: WCHEN 2012/12/04	DESCRIPTION REV	QUALITY SYMBOLS ▽=0 ▽=0	GENERAL TOLERANCES (UNLESS SPECIFIED)		DIMENSION STYLE MM/IN		SCALE 2:1	DESIGN UNITS METRIC	THIRD ANGLE PROJECTION				
				mm	INCH	DRAWN BY L.SADAUSKAS	DATE 2007/11/12	TITLE ADAPTER ASSEMBLY, METAL BODY INDUSTRIAL LC W/PLASTIC DUST COVER					
			4 PLACES	± ---	± ---	CHECKED BY	DATE						
			3 PLACES	± ---	± ---	APPROVED BY B.ANDREI		DATE	MOLEX INCORPORATED				
			2 PLACES	± ---	± ---								
			1 PLACE	± ---	± ---	ANGULAR ±1/2°		MATERIAL NO. DOCUMENT NO. SD-106059-7X50					
			DRAFT WHERE APPLICABLE MUST REMAIN WITHIN DIMENSIONS			SEE TABLE							SHEET NO. 1 OF 1
						SIZE C		THIS DRAWING CONTAINS INFORMATION THAT IS PROPRIETARY TO MOLEX INCORPORATED AND SHOULD NOT BE USED WITHOUT WRITTEN PERMISSION					