

SAMSUNG
Gear S2

SM-R720

User Manual

SAMSUNG

Legal



WARNING! This product contains chemicals known to the State of California to cause cancer, birth defects, or other reproductive harm. For more information, please call 1-800-SAMSUNG (726-7864).



Notice: Water-resistant and dustproof based on IP68 rating, which tests submersion up to 5.0 feet for up to 30 minutes.

Intellectual Property

All Intellectual Property, as defined below, owned by or which is otherwise the property of Samsung or its respective suppliers relating to the SAMSUNG mobile device, including but not limited to, accessories, parts, or software relating thereto (the “mobile device”), is proprietary to Samsung and protected under federal laws, state laws, and international treaty provisions. Intellectual Property includes, but is not limited to, inventions (patentable or unpatentable), patents, trade secrets, copyrights, software, computer programs, and related documentation and other works of authorship. You may not infringe or otherwise violate the rights secured by the Intellectual Property. Moreover, you agree that you will not (and will not attempt to) modify, prepare derivative works of, reverse engineer, decompile, disassemble, or otherwise attempt to create source code from the software. No title to or ownership in the Intellectual Property is transferred to you. All applicable rights of the Intellectual Property shall remain with SAMSUNG and its suppliers.

Open Source Software

Some software components of this product incorporate source code covered under GNU General Public License (GPL), GNU Lesser General Public License (LGPL), OpenSSL License, BSD License and other open source licenses. To obtain the source code covered under the open source licenses, please visit: opensource.samsung.com.

Disclaimer of Warranties; Exclusion of Liability

EXCEPT AS SET FORTH IN THE EXPRESS WARRANTY CONTAINED ON THE WARRANTY PAGE ENCLOSED WITH THE PRODUCT, THE PURCHASER TAKES THE PRODUCT "AS IS", AND SAMSUNG MAKES NO EXPRESS OR IMPLIED WARRANTY OF ANY KIND WHATSOEVER WITH RESPECT TO THE PRODUCT, INCLUDING BUT NOT LIMITED TO THE MERCHANTABILITY OF THE PRODUCT OR ITS FITNESS FOR ANY PARTICULAR PURPOSE OR USE; THE DESIGN, CONDITION OR QUALITY OF THE PRODUCT; THE PERFORMANCE OF THE PRODUCT; THE WORKMANSHIP OF THE PRODUCT OR THE COMPONENTS CONTAINED THEREIN; OR COMPLIANCE OF THE PRODUCT WITH THE REQUIREMENTS OF ANY LAW, RULE, SPECIFICATION OR CONTRACT PERTAINING THERETO. NOTHING CONTAINED IN THE INSTRUCTION MANUAL SHALL BE CONSTRUED TO CREATE AN EXPRESS OR IMPLIED WARRANTY OF ANY KIND WHATSOEVER WITH RESPECT TO THE PRODUCT. IN ADDITION, SAMSUNG SHALL NOT BE LIABLE FOR ANY DAMAGES OF ANY KIND RESULTING FROM THE PURCHASE OR USE OF THE PRODUCT OR ARISING FROM THE BREACH OF THE EXPRESS WARRANTY, INCLUDING INCIDENTAL, SPECIAL OR CONSEQUENTIAL DAMAGES, OR LOSS OF ANTICIPATED PROFITS OR BENEFITS.

Modification of Software

SAMSUNG IS NOT LIABLE FOR PERFORMANCE ISSUES OR INCOMPATIBILITIES CAUSED BY YOUR EDITING OF REGISTRY SETTINGS, OR YOUR MODIFICATION OF OPERATING SYSTEM SOFTWARE.

USING CUSTOM OPERATING SYSTEM SOFTWARE MAY CAUSE YOUR DEVICE AND APPLICATIONS TO WORK IMPROPERLY. YOUR CARRIER MAY NOT PERMIT USERS TO DOWNLOAD CERTAIN SOFTWARE, SUCH AS CUSTOM OS.

Samsung KNOX

Samsung KNOX™ is Samsung's security platform and is a mark for a Samsung device tested for security with enterprise use in mind. Additional licensing fee may be required. For more information about KNOX, please refer to: samsung.com/us/knox [041516]

Samsung Electronics America (SEA), Inc.

Address:

85 Challenger Road
Ridgefield Park,
New Jersey 07660

Phone:

1-800-SAMSUNG (726-7864)

Internet Address:

samsung.com

©2016 Samsung Electronics America, Inc. Samsung, Samsung Galaxy, and S Health are all trademarks of Samsung Electronics Co., Ltd.

Other marks are the property of their respective owners.



Notice: Screen images are simulated. Appearance of device may vary.

Do you have questions about your Samsung Mobile Device?

For 24 hour information and assistance, we offer a new FAQ/ARS System (Automated Response System) at: samsung.com/us/support

The actual available capacity of the internal memory is less than the specified capacity because the operating system and default applications occupy part of the memory. The available capacity may change when you upgrade the device.

Legal Information

Important legal information can be accessed at samsung.com

READ THIS INFORMATION BEFORE USING YOUR MOBILE DEVICE.

Samsung Limited Warranty

Samsung Limited Warranty - This product is covered under the applicable Samsung Limited Warranty **INCLUDING ITS DISPUTE RESOLUTION PROCEDURE and your right to opt out of arbitration within 30 calendar days of the first consumer purchase. You may opt out by either sending an email to optout@sea.samsung.com with the subject line "Arbitration Opt-Out" or by calling 1-800-SAMSUNG (726-7864).** For more detailed procedures, please refer to the "Dispute Resolution Procedures and Arbitration and Opt-Out" section of the Limited Warranty.

The EULA for this device is found in the Gear Manager application, which is required for operation of your device.

You may also access this EULA at: samsung.com/us/Legal/SamsungLegal-EULAGEAR

Table of Contents

Basics

- 1 Package contents
- 2 Device layout
- 4 Battery
- 7 Wearing the Gear
- 9 Replacing the strap
- 11 Turning the Gear on and off
- 13 Remote connection
- 14 Turning the screen on and off
- 14 Using the bezel
- 16 Touchscreen
- 18 Navigating the screen
- 19 Home screen
- 24 Status panel
- 26 Apps screen
- 27 Setting the screen lock
- 28 Entering text
- 31 Screen capture
- 31 Updating the Gear

Applications

- 32 Messages
- 33 Phone
- 35 S Health
- 43 Running
- 44 Schedule
- 45 S Voice

- 46 Weather
- 47 Alarm
- 47 Timer
- 48 Stopwatch
- 48 Bloomberg
- 49 CNN
- 49 Music Player
- 51 Gallery
- 53 Buddy
- 53 Email
- 54 Find My Phone
- 54 Maps
- 55 Voice Memo

Samsung Gear App

- 56 Introduction
- 57 Watch faces
- 57 Notifications
- 58 Manage apps
- 58 Send media
- 59 App settings
- 59 Samsung Gear Apps
- 59 Settings
- 62 Find My Gear

Settings

63	Introduction
63	Display
63	General
64	Vibration
64	Call
65	Connections
67	Screen lock
67	Input
68	Power saving
68	Gear info

Basics

Instructional icons



Warning: Situations that could cause injury to yourself or others.



Caution: Situations that could cause damage to your device or other equipment.



Notice: Notes, usage tips, or additional information.

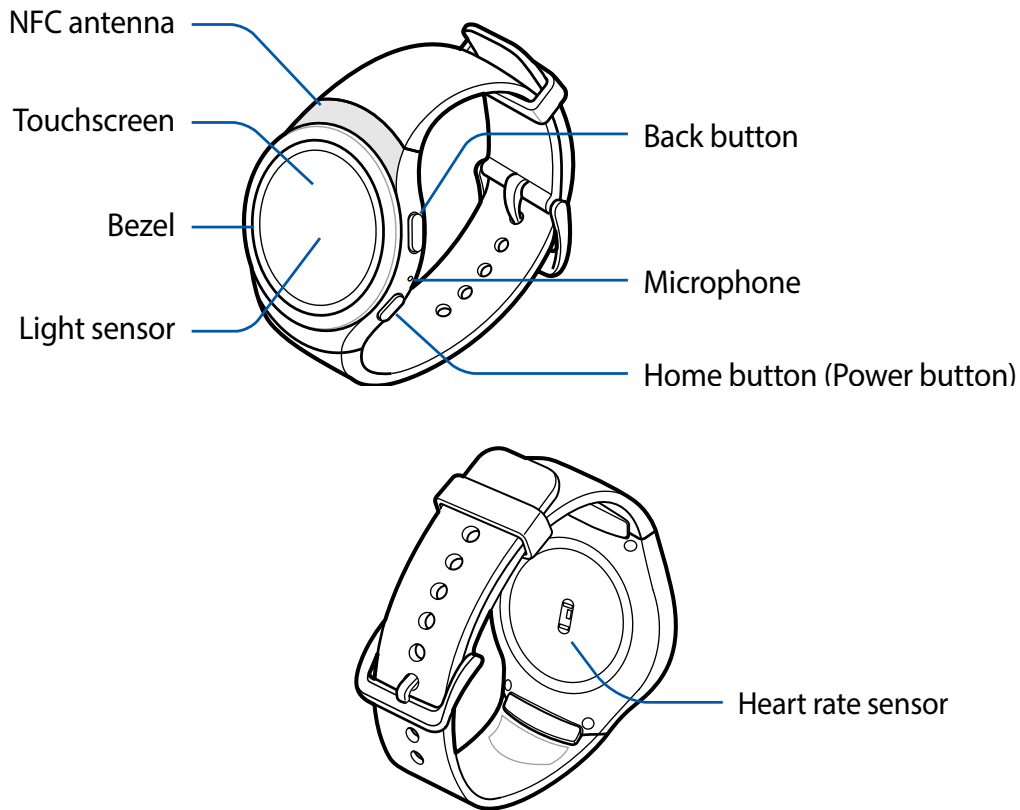
Package contents

Check the product box for the following items:



- Gear
- Wireless charger dock
- Strap
- Quick start guide

Device layout

Gear S2



Buttons

Button	Function
 Home/Power	<ul style="list-style-type: none"> • Press and hold to turn the Gear on or off. • Press to turn on the screen. • Press and hold for more than 7 seconds to restart the Gear. • Press to open the Apps screen when you are on the Watch screen. • Press to open the Watch screen when you are on any other screen.
 Back	<ul style="list-style-type: none"> • Press to return to the previous screen.

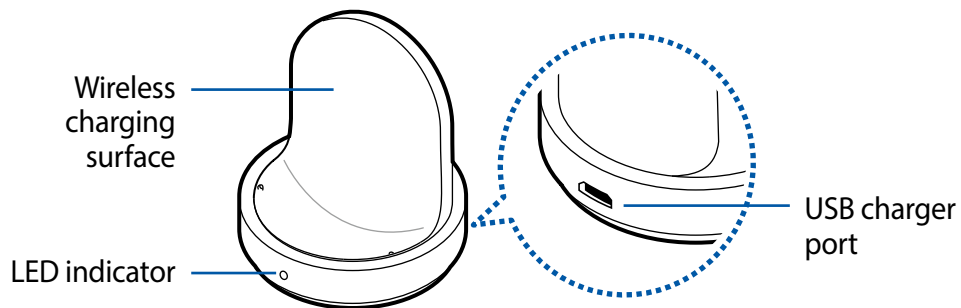


Make sure the Gear's microphone is not obstructed when you are speaking into it.



Do not allow children or animals to chew or suck the device. Do not disassemble, modify, or repair your device. Magnetic stripe cards, including credit cards, phone cards, passbooks, and boarding passes, may be damaged by magnetic fields.

Wireless charger dock



Battery

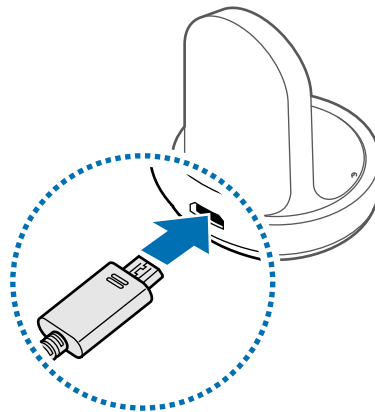
Charging the battery

Charge the battery before using it for the first time or when it sits unused for extended periods.



Use only charging devices and batteries approved by Samsung. Samsung accessories are designed for your device to maximize battery life. Using other accessories may invalidate your warranty and may cause damage.

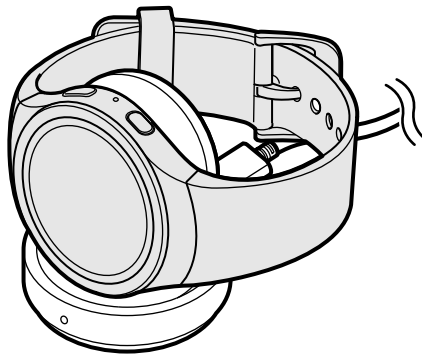
- 1 Connect the USB cable to the USB power adaptor. Then, connect the other end of the USB cable to the wireless charger dock.



Prevent the multi-purpose jack and the small end of the charger from coming into contact with conductive materials, such as liquids, dust, metal powders, and pencil leads.

- 2 Plug the USB power adaptor into an electric socket.

- 3 Place the Gear into the wireless charger dock.



- 4 After fully charging your Gear, disconnect it from the wireless charger dock. Unplug the charger from the wireless charger dock, and then unplug the charger from the electric socket.

Checking the charging status

When you connect the Gear and the wireless charger dock, the wireless charger dock's LED indicator flashes certain colors to indicate the battery level.

Color	Charging status
Red → Green → Yellow	Standby mode
Red	Charging
Green	Fully charged
Yellow	Connected to a low-power adaptor



When a wireless charger dock error occurs, the LED indicator flashes red. Disconnect the Gear from the wireless charger dock and reconnect them. If the error occurs again, contact a Samsung Service Center for service support.



The LED indicator may work differently depending on the Gear.

Reducing the battery consumption

Your Gear provides various options that help you conserve battery power.

- When you are not using the Gear, switch to sleep mode by covering the screen with your palm.
- Activate power saving mode.
- Close unnecessary apps.
- Deactivate the Bluetooth feature when not in use.
- Deactivate the Wi-Fi feature when not in use.
- Decrease the screen brightness.
- Deactivate the watch always on feature.
- Deactivate the voice wake-up feature in S Voice™.
- Customize the notification settings in the Samsung Gear app on the connected mobile device.

Battery charging tips and precautions

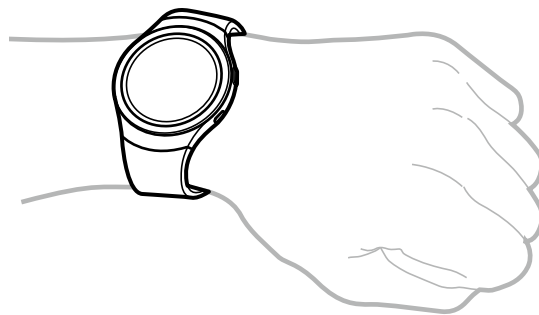
- If there are obstructions between the Gear and the wireless charger dock, the Gear may not charge properly.
- Prevent the Gear and the wireless charger from coming into contact with sweat, liquids, or dust.
- If the battery is completely discharged, the Gear cannot be turned on immediately after being connected to the charger. Allow a depleted battery to charge for a few minutes before turning on the Gear.
- If you use multiple apps at once, the battery will drain quickly. To avoid losing power during a data transfer, always use these apps after fully charging the battery.
- Using a power source other than the charger, such as a computer, may result in a slower charging speed due to a lower electric current.
- If the Gear is being charged with other devices via a multi-charger, charging may take longer.
- The Gear can be used while it is charging, but it may take longer to fully charge the battery.
- If the Gear receives an unstable power supply while charging, the touchscreen may not function. If this happens, immediately disconnect the Gear from the wireless charger dock and leave the device aside until another power connection can be found.

- While charging, the Gear may heat up. This is normal and should not affect the Gear's lifespan or performance. If the battery feels hot to the touch during this charging process, remove the Gear from the charger and allow it to cool down before restarting the charging process, or call 1-800-SAMSUNG (726-7864) to receive technical support.
- If the Gear is not charging properly, take the Gear to a Samsung Service Center.
- Avoid using a bent or damaged USB cable.

Wearing the Gear

Putting on the Gear

Open the buckle and place the strap around your wrist. Fit the strap to your wrist, insert the pin into an adjustment hole, and then secure the buckle to close it.



The information gathered from this device, S Health, or related software is not intended for use in the diagnosis of disease or other conditions, or in the cure, mitigation, treatment or prevention of disease.

The accuracy of the information and data provided by this device and its related software, including heart rate readings, may be affected by factors such as environmental conditions, skin condition, specific activity performed while using/wearing the device, settings of the device, user configuration/user-provided information, placement of the sensor on the body, and other end-user interactions. For more information on proper wear and use, see samsung.com/us/heartratesensor.



If you feel discomfort while using the device, stop using it and remove it from your wrist. If your device becomes hot to the touch, please remove it until it cools.



To measure your heart rate more accurately with the Gear, wear the Gear firmly around your lower arm just above the wrist. Refer to [Wearing the Gear correctly](#) for details.

Maintaining Water and Dust Resistance



Notice: Water-resistant and dustproof based on IP68 rating, which tests submersion up to 5.0 feet for up to 30 minutes.

This device is rated IP68 using the Ingress Protection rating system.

Your device has been tested in a controlled environment and shown to be water and dust resistant in certain circumstances (meets requirements of classification IP68 as described by the international standard IEC 60529 - Degrees of Protection provided by Enclosures [IP Code]; test conditions: 15-35°C, 86-106 kPa, 5.0 feet, for 30 minutes). Despite this classification, your device is not impervious to water damage in any situation. It is important that all compartments are closed tightly.

Follow these tips carefully to prevent damage to the device.

- Whenever your device gets wet, dry it thoroughly with a clean, soft cloth.
- Do not expose the device to salt water or ionized water, or to water over 5.0 feet deep for more than 30 minutes. If your device is exposed to fresh water, dry it thoroughly with a clean, soft cloth. If the device is exposed to any liquid other than fresh water, rinse the device with fresh water immediately and dry it thoroughly with a clean, soft cloth. Failure to rinse the device in fresh water and dry it as instructed may cause the device to suffer from operability or cosmetic issues.
- Do not expose the device to water at high pressure.
- If the device is dropped or receives an impact, the water and dust resistant features of the device may be damaged.
- The touchscreen and other features may not work properly if the device is used in water or in other liquids.

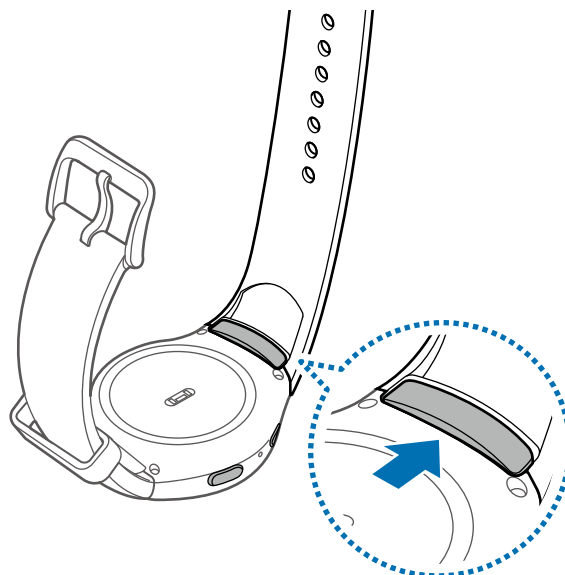
Strap tips and precautions

- Be cautious when wearing the Gear. If you have sensitive skin or fasten the Gear too tightly, you may feel some discomfort.
- Some people may experience discomfort when wearing the Gear for prolonged periods.
- Do not expose the straps to very wet conditions. Wet straps can cause skin irritations. Dry the straps first. If you experience skin irritation when wearing the device, stop wearing the device and consult a physician.
- Do not use harsh chemicals, cleaning solvents, or strong detergents to clean the mobile device. Wipe it with a soft cloth slightly dampened in a mild soap-and-water solution. If the mobile device has a retractable camera lens, do not use soap and water to clean the lens. Use a blower or brush or lens cleaning paper dampened in a lens cleaning solution.
- The Gear and the strap have passed the hazardous materials test and meet international safety standards.

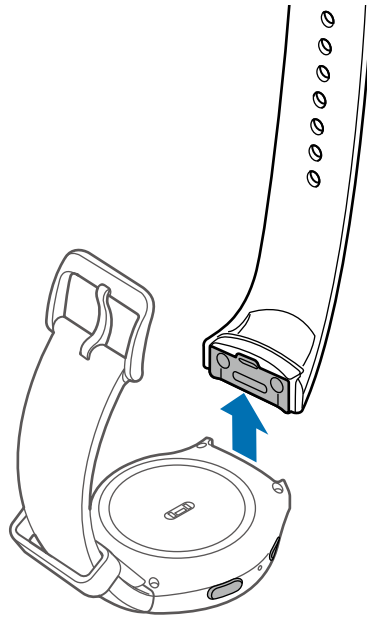
Replacing the strap

Detach the strap from the Gear to replace it with a new one.

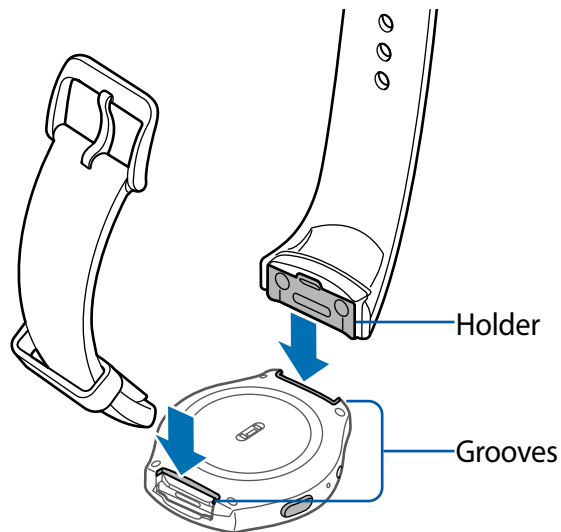
- 1 Push the button where the Gear's body and strap meet.



2 While pushing the button, pull the strap upward and remove it.



3 Insert the holder of new strap into the grooves on the Gear's body.

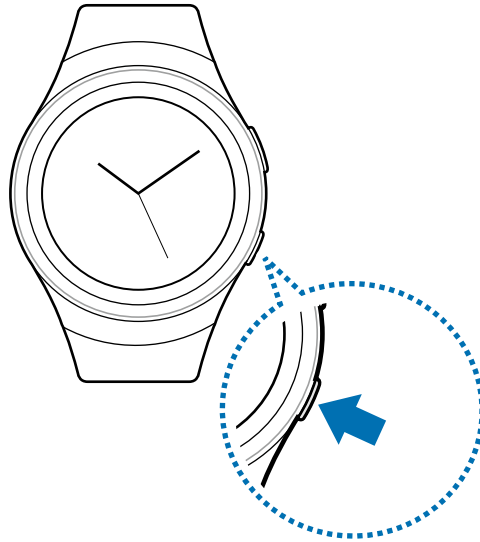


4 Push the strap into the Gear's body until it clicks into place.

Turning the Gear on and off

Press and hold the **Power** button for a few seconds to turn on the Gear. When you turn on the Gear for the first time or reset it, a pop-up window displays. Follow the prompts to download and install the Samsung Gear app on your mobile device. Refer to [Connecting the Gear to a mobile device](#) for details.

To turn off the Gear, press and hold the **Power** button, and then tap **Power off**.



Connecting the Gear to a mobile device

You should connect your Gear to your mobile device once before using the Gear. To connect your Gear to a mobile device, install the Samsung Gear app on the mobile device. Launch **Galaxy Apps** from your mobile device or visit apps.samsung.com/gear to download it.

Compatible with Android 4.4 and later with 1.5GB RAM. Some features may not be available. For best compatibility, connect with compatible Samsung Galaxy devices.

- 1 Turn on the Gear.
- 2 On the mobile device Apps screen, tap **Samsung Gear**.
If necessary, update the Samsung Gear app to the latest version.
- 3 Tap **CONNECT TO GEAR**.
- 4 When the **Bluetooth pairing request** window displays, confirm the passkeys displayed on your Gear and mobile device match, and then tap **OK**.

5 Follow the prompts to complete the connection.

When the devices are connected, a tutorial displays on the Gear's screen. Follow the prompts to learn the Gear's basic controls.



- Connection methods and screenshots may vary depending on your device and software version.
- You cannot install the Samsung Gear app on the mobile devices that do not support Gear syncing. Ensure that your mobile device is compatible with a Gear.
- Supported mobile devices and features may vary depending on your region, service provider, and device manufacturer. Visit www.samsung.com and search for your Gear device's support page to view a list of compatible mobile devices.

Connecting the Gear to a new mobile device

When you connect the Gear to another mobile device, the Gear automatically resets and all data is removed from its memory. Make sure you back up any important data stored on your Gear.

- 1 Back up your Gear's data on your mobile device.
 - On your mobile device, open the Apps screen and tap **Samsung Gear** → **Settings** → **Back up and restore** → **Back up data**.
- 2 End the connection between your Gear and mobile device. Refer to [Disconnecting the Gear](#) for more information.
- 3 Connect your Gear to another mobile device.
Refer to [Connecting the Gear to a mobile device](#) for more information.



If the mobile device you want to connect to is already connected to another Gear, your Gear cannot establish a connection.

Remote connection

You can remotely connect the Gear to your mobile device when a Bluetooth connection is not available. With this connection, you can still receive notifications from your mobile device. This feature is automatically activated when you connect to your mobile device using Bluetooth for the first time.

If this feature is not turned on, on your mobile device, open the Apps screen, tap **Samsung Gear** → **Settings** → **Connection**, and then tap the **Use Remote connection** switch.

Turning the screen on and off

To turn on the screen, rotate the bezel, or press the **Home** button or the **Back** button.

To turn off the screen, cover it with your palm. Also, the screen will turn off if the Gear is not used for a specified period.

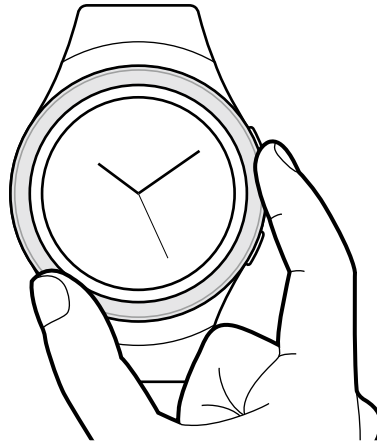
You can also turn on the screen using a gesture.

Using the bezel

Rotate the bezel to easily control the Gear's various functions.

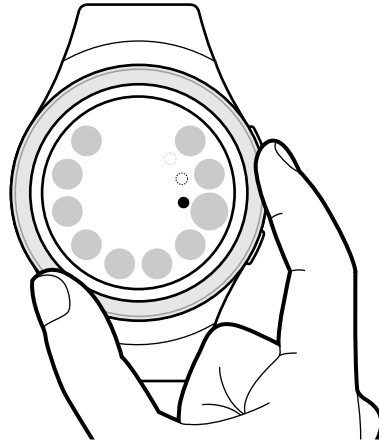
Scrolling through screens

Rotate the bezel to view other screens. On the Watch screen, rotate the bezel counter-clockwise to view notifications.



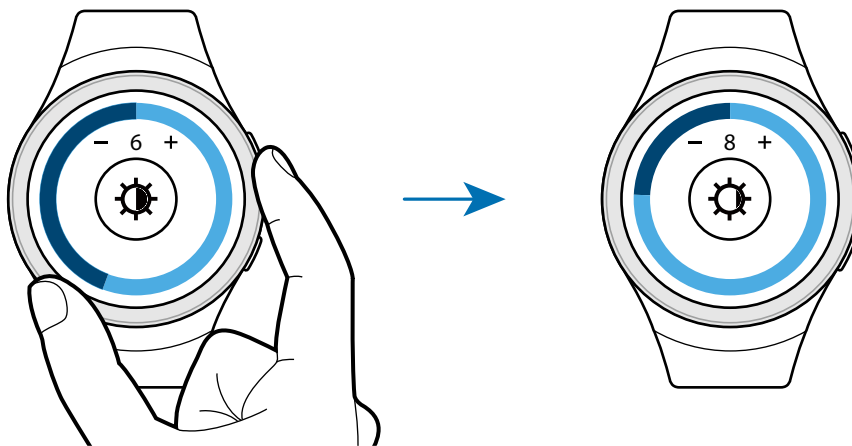
Selecting an item

Rotate the bezel to highlight the item you want to select and then tap the item. When you rotate the bezel, the highlight indicator moves in the same direction.



Adjusting the input value

Rotate the bezel to adjust the volume or brightness.



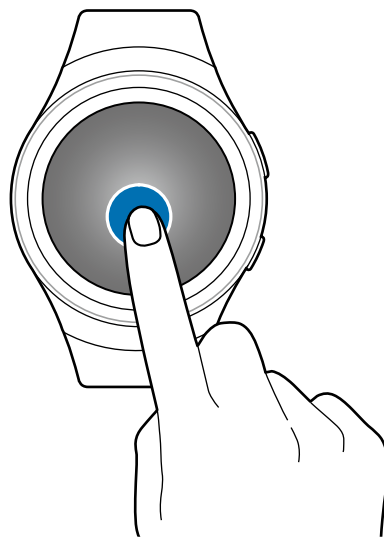
Touchscreen



The Gear may not recognize touch inputs close to the edges of the screen, which are outside of the touch input area.

Tapping

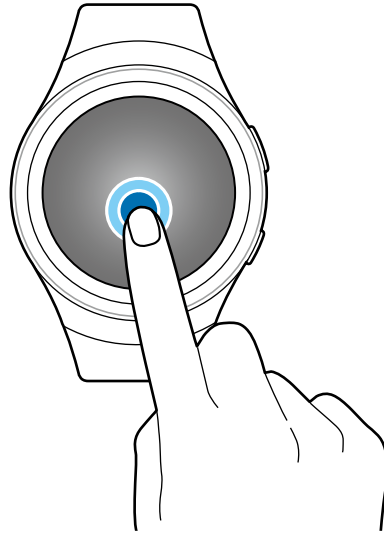
Tap with your finger to open an app, select a menu item, press a displayed button, or enter a character using the keyboard.



Touch-screens respond best to a light touch from the pad of your finger or a capacitive stylus. Using excessive force or a metallic object when pressing on the touch-screen may damage the tempered glass surface and void the warranty. For more information, please refer to the [Samsung Limited Warranty](#).

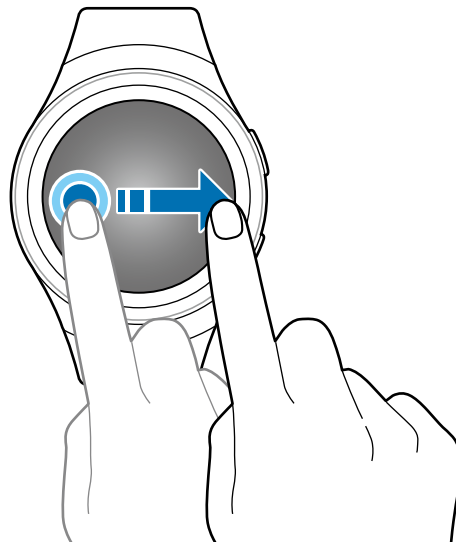
Tapping and holding

Tap and hold the screen for two or more seconds to access the Edit mode or to view available options.



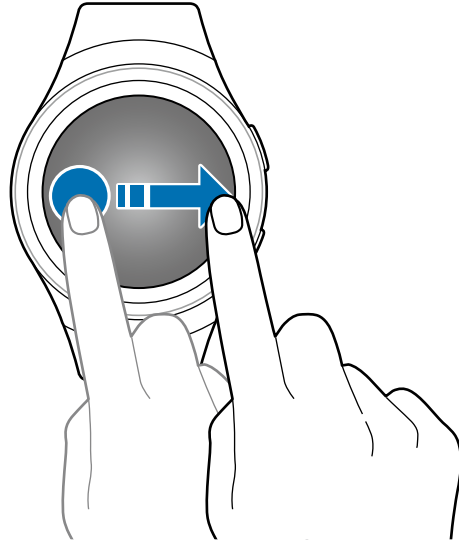
Dragging

To move an item, tap and hold it and drag it to the target position.



Swiping

Swipe to the left or right to view other panels.

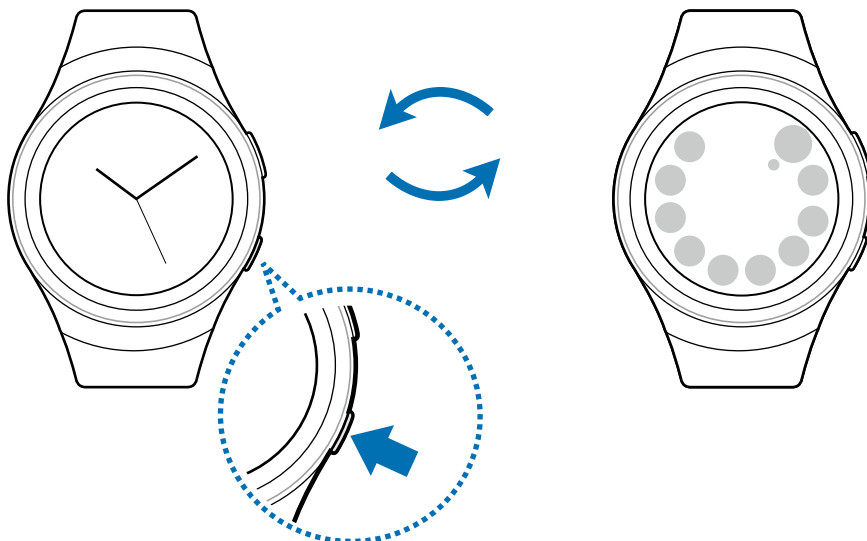


Navigating the screen

Switching between the Watch and Apps screen

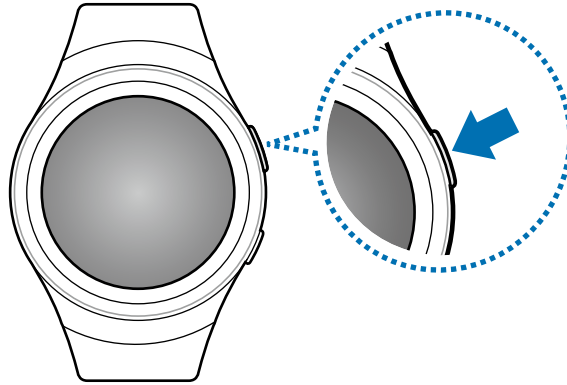
On the Watch screen, press the **Home** button to open the Apps screen.

When you are not on the Watch screen, press the **Home** button to return to the Watch screen.



Returning to the previous screen

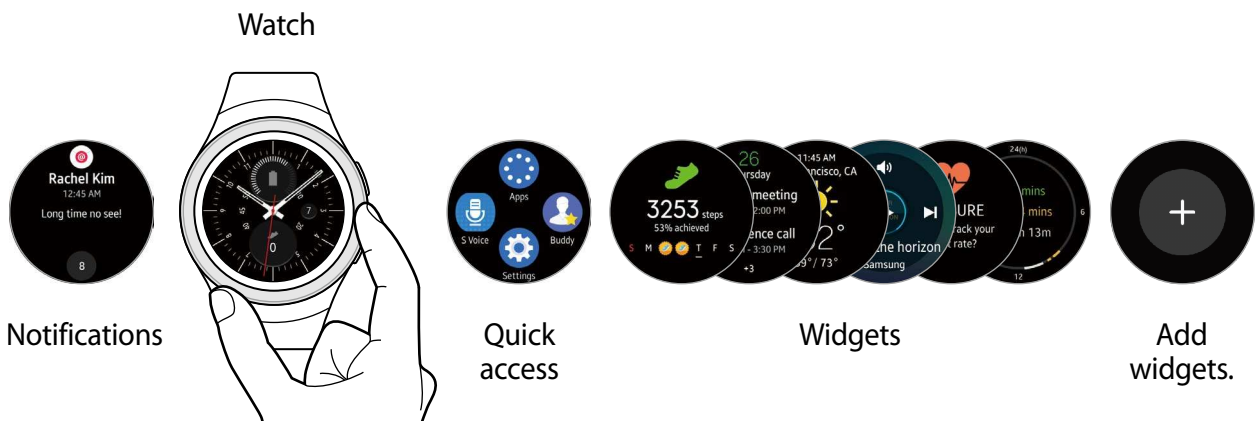
Press the **Back** button. You can also swipe down from the top edge of the screen.



Home screen

Introduction

The Home screen can have multiple panels. The Watch screen is the starting point for the Home screen. Rotate the bezel to view items on the screen, such as notifications and widgets.



Available widgets, notifications, and their arrangement may vary depending on the software version.

Notifications panel

Stay up to date with events, notifications, and messages from your mobile device.

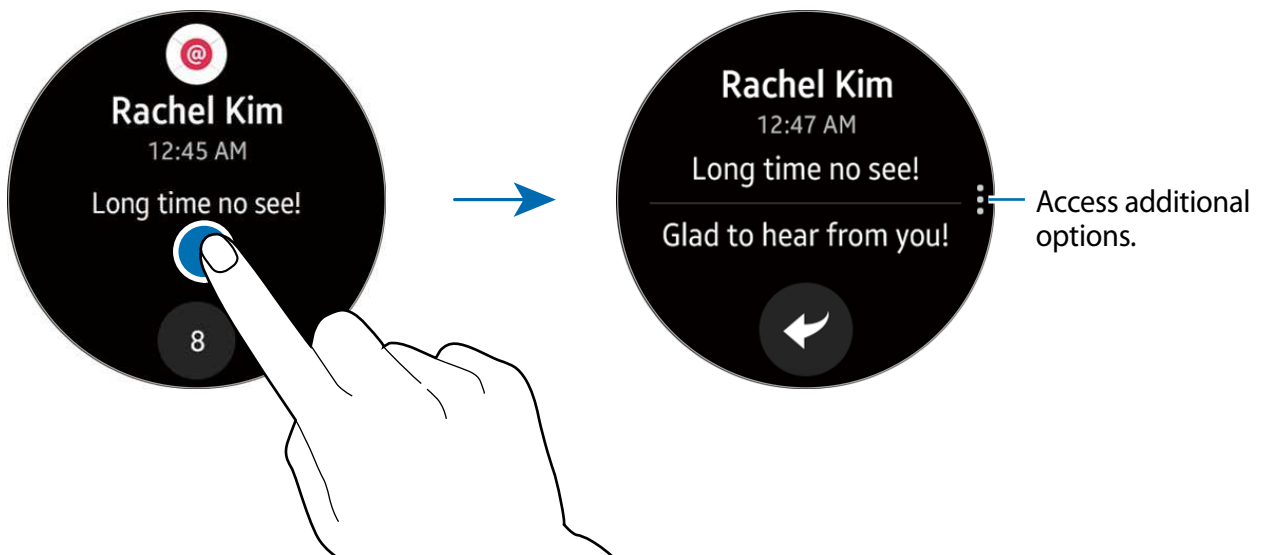
When you receive a notification, it displays at the top of the screen and disappears after a few seconds and the Gear vibrates.



Your Gear does not have a speaker so the Gear only vibrates when the notification arrives. Refer to [Vibration](#) to configure the vibration settings.

Viewing incoming notifications

Tap the notification screen. You can view the notification's detail.

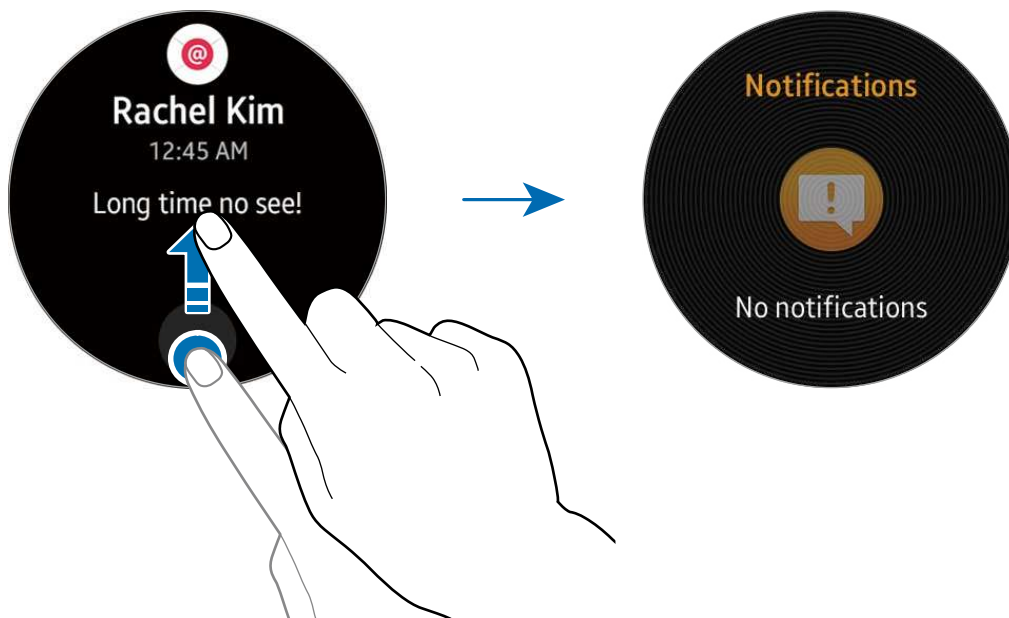


Viewing other notifications

Tap the number at the bottom of the panel. You can view other notifications received from the same app. Rotate the bezel counter-clockwise to view notifications received from other apps.

Deleting notifications

Delete a notification by swiping upward from the bottom edge of the screen while viewing a notification.



Blocking notifications

- 1 Select a notification from the app you want to block.
- 2 Tap the notification to view the details.
- 3 Tap **More options**, rotate the bezel to **Block app** and tap **Block app**.

The Gear no longer receives notifications from the app.



You can block notifications from specific apps on the Gear. When you have not received any notifications on your Gear, block notifications using your mobile device. On your mobile device, open the Apps screen, tap **Samsung Gear** → **Notifications** → **Manage notifications**.

Watch screen

View the current time. You can also check the battery life, the date, your step count, and more.



Press the **Home** button to open the Watch screen when you are not on the Watch screen.

Changing the watch face

Tap and hold the Watch screen, then rotate the bezel to select a watch face. You can also customize the watch by tapping **STYLIZE**.



You can also change the Gear's watch face on your mobile device. On the mobile device, open the Apps screen, tap **Samsung Gear** → **Watch faces**.

Quick access panel

View and manage shortcuts to the Apps screen and other apps.



Managing the quick access panel

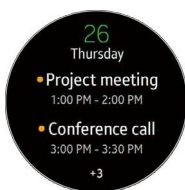
You can create up to four shortcuts to your most frequently used apps. Tap and hold anywhere on the screen. Tap **EDIT** and tap  **Delete** to delete a shortcut. Tap  **Add** to add a shortcut.

Widgets

You can add widgets to the Home screen. Widgets are small apps that offer limited functionality to provide information and convenient access. You can use the following widgets by default.



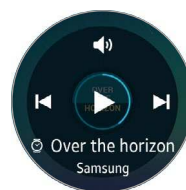
Step tracker



Schedule



Weather



Music Player



Heart rate tracker



24-hours activity tracker

Adding widgets

You can add more widgets on the Home screen.

Tap **+** Add and select a widget. The selected widget displays in a new panel.



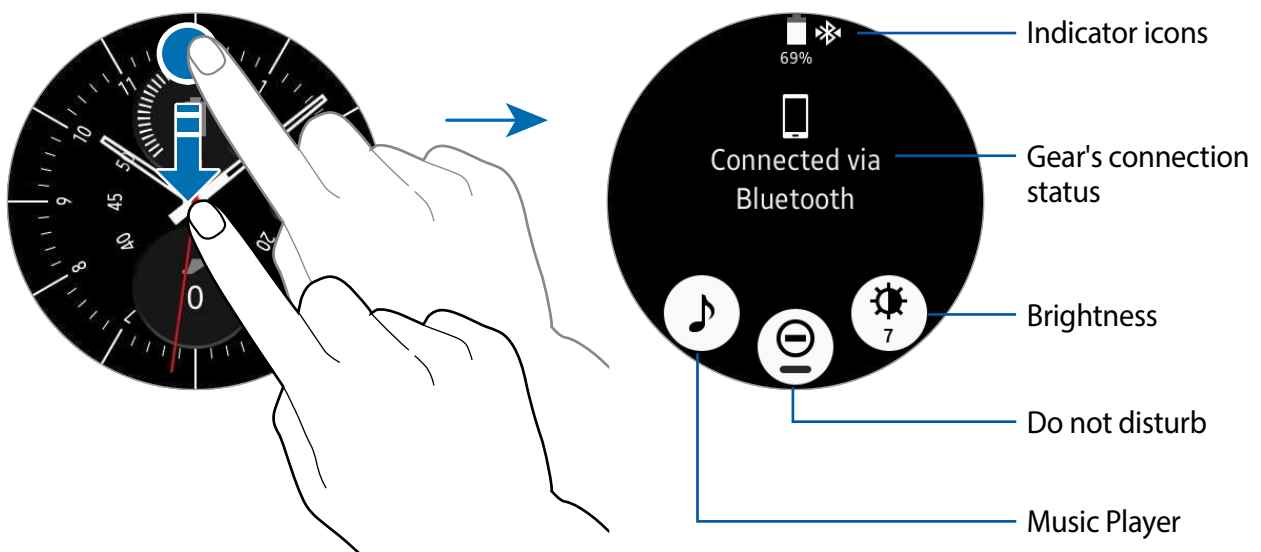
Removing widgets

Tap and hold a widget and then tap **-** Delete.

Status panel






This panel allows you to view the current status and configure basic settings.

On the Watch screen, swipe downward from the top edge of the screen.



Indicator icons

Indicator icons display at the top of the screen. The icons listed in this table are most common.

Icon	Meaning
	Bluetooth connected
	Bluetooth disconnected
	Bluetooth headset connected
	Wi-Fi connected
	Battery power level

Playing music

You can play music saved on the Gear or mobile device.

On the status panel, tap  **Play**.

Do not disturb mode


You can set the Gear not to vibrate and turn off the screen when a notification is received, except for alarms.

On the status panel, tap  **Do not disturb**.

The  **Do not disturb** icon displays at the top of the Watch screen.

Adjusting the brightness


You can adjust the Gear's display brightness to suit the environment.

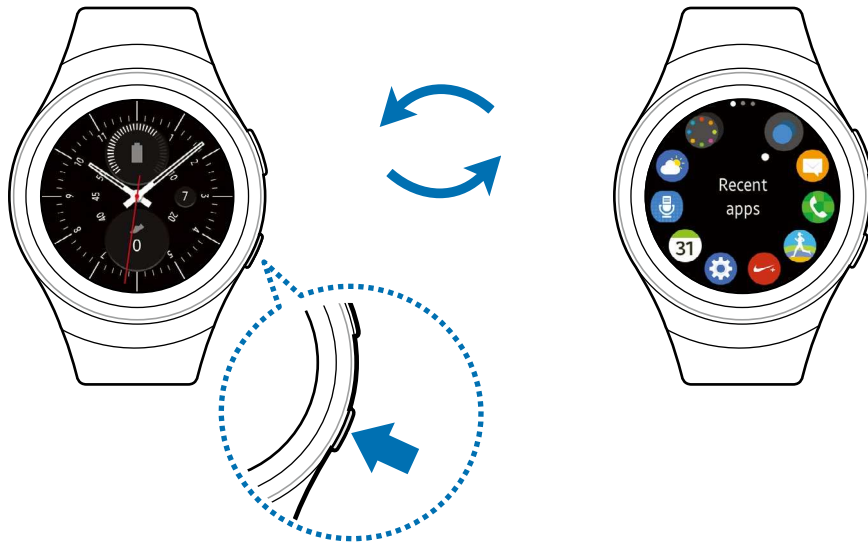
On the status panel, tap  **Brightness** and adjust the brightness by rotating the bezel.

Apps screen

The Apps screen displays icons for all apps.

On the Watch screen, press the **Home** button to go to the Apps screen.

To view other panels, rotate the bezel. You can also tap  **Apps screen** or swipe the screen to the left or right.




Opening apps

On the Apps screen, tap an app icon to open the app.

To open an app from the list of recently used apps, tap **Recent apps** on the Apps screen and select the recent app window.

Closing apps

- 1 On the Apps screen, tap **Recent apps**.
- 2 Rotate the bezel to highlight the app you want to close.
- 3 Tap  **Menu**.
- 4 Tap **Close all** to close all running apps.

Moving items

On the Apps screen, tap and hold the screen, tap and hold an app and then drag it to the desired location.

You can also arrange the Gear's apps on your mobile device. Refer to [Manage apps](#) in the Samsung Gear app for more information.

Installing apps

You can purchase and download apps specially designed for the Gear. To use this feature, your Gear and mobile device must be connected.

On the Apps screen, tap  **Get more apps**.

The **Samsung Gear Apps** store automatically launches on your mobile device. From the store, you can browse and download apps.

Uninstalling apps

You can only uninstall the downloaded Gear apps on your mobile device. Refer to [Uninstalling apps](#) in the Samsung Gear app for more information.

Setting the screen lock

Setting a screen lock code

Prevent others from accessing your Gear when you are not wearing it.

If you set the screen lock feature, the Gear requires an unlock code whenever unlocking it.

PIN

On the Apps screen, tap **Settings** → **Screen lock** → **Screen lock** → **PIN**.

A PIN consists of numbers only. Enter four numbers, and then enter the PIN again to verify it.

Unlocking the Gear

When you are not wearing the Gear, turn on the screen and enter the unlock code.

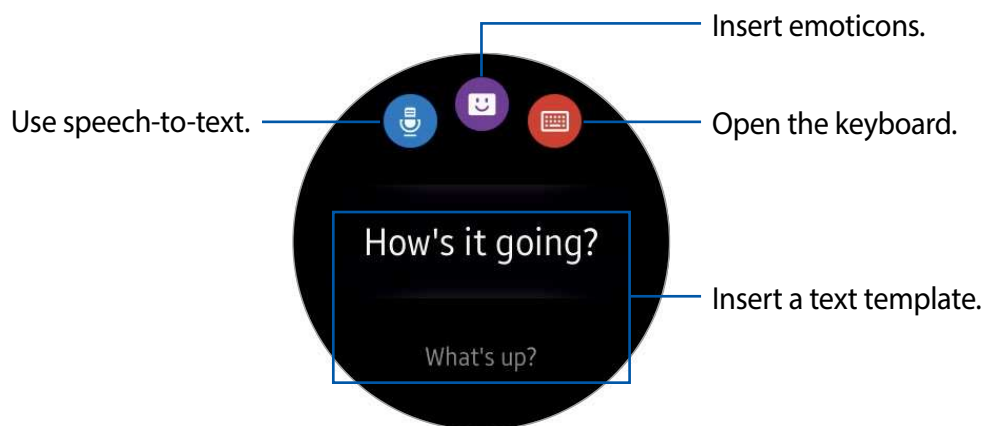
Entering text

Introduction




A text input screen displays automatically when you are able to enter text. Select an emoticon or text template to enter a message. You can also use voice input or the keyboard to type texts.

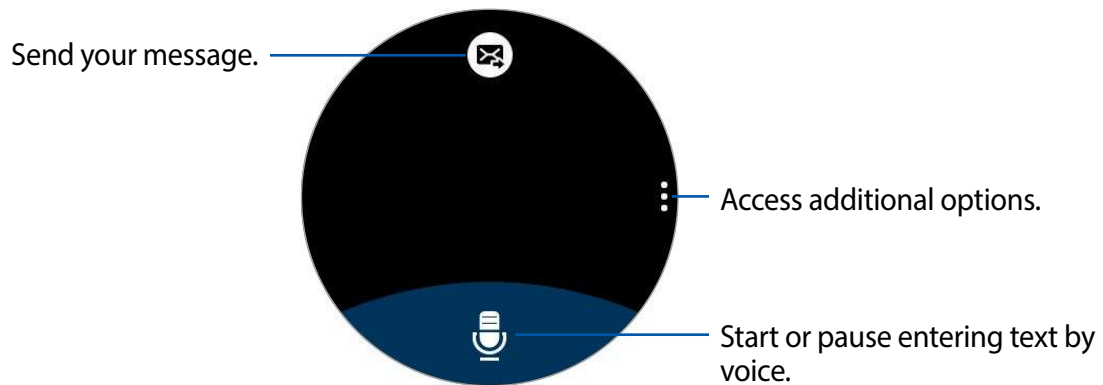


The screen layout may be different depending on the app you launch.



Using the voice input

- 1 Tap  **Microphone** and speak the message you want to enter. Tap  when you are finished.
- 2 Tap  **More options** → **Language** to change the language.

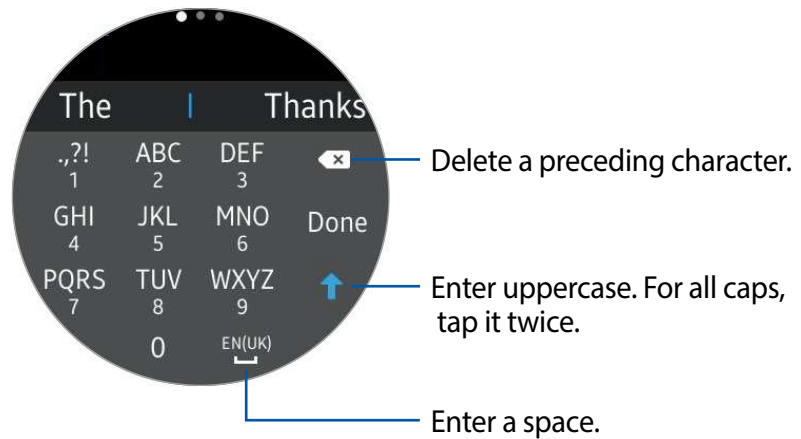


- This feature is not supported in some languages.
- When the Gear is connected to a mobile device using Bluetooth, the language settings applied on the mobile device are applied to the Gear.
- **Tips for better voice recognition**
 - Speak clearly.
 - Speak in quiet places.
 - Do not use offensive or slang words.
 - Avoid speaking in dialectal accents.

The Gear may not recognize your commands or may perform unwanted commands depending on your surroundings or how you speak.

Using the keyboard

A key has three or four characters. To enter a character, tap the corresponding key repeatedly until the desired character displays.



Changing the input mode

Rotate the bezel to change the input mode. You can switch between character mode, number mode, and punctuation mode.

Changing the input language

Slide the space key left or right.

To add more languages, switch to number mode or punctuation mode. Then, tap **Settings** → **Select input languages** and select a language to add. You can use up to two languages.

Screen capture

Capture a screenshot while using the Gear.

Press and hold the Home button and swipe your finger to the right across the screen.

You can view captured images in **Gallery**.



It is not possible to capture a screenshot while using some apps and features.

Updating the Gear

The Gear can be updated to the latest software.

Updating over the air

The Gear can be directly updated to the latest software by the firmware over-the-air (FOTA) service.

- 1 Tap **Samsung Gear** on the Apps screen of the mobile device.
- 2 Tap **Settings**.
- 3 Tap **About Gear** → **Update Gear software** → **Update now**.
- 4 Tap **DOWNLOAD** and install the latest software on your mobile device.
- 5 Read the displayed information and tap **OK**.

The Gear copies the updated software from your mobile device and restarts.



To automatically check for available updates, tap the **Auto update** switch to activate it. To download updates only when a Wi-Fi connection is activated, tap the **Wi-Fi only** switch to activate it.


Applications

Messages


Introduction

View messages and reply to or call the sender using the Gear.

Viewing messages

- 1 Tap **Messages** on the Apps screen.
- 2 Scroll through the message list, and then select a contact to view your conversations.
 - To view a message on your mobile device, tap **More options** → **Show on phone**.
 - To reply to a message, tap  **Reply** and enter your message.

Sending messages

- 1 Tap **Messages** on the Apps screen.
- 2 Tap **More options**, rotate the bezel to **New message**, and then tap **New message**.
- 3 Add recipients and tap **NEXT**.
- 4 Enter text using one of available methods.
 - Messages are automatically sent to the recipients.
 - If you type texts using voice input or the keyboard, tap  **Send** to send the message.


Phone

Introduction

You can initiate calls or receive notifications for incoming calls. Call conversations are only possible on the connected mobile device.

Receiving calls

Answering a call


Drag  **Answer** to the right to answer a call.

The call feature will automatically launch on your mobile device. Use your mobile device to have a conversation.

If the voice control feature is activated, say “**Answer**” to answer the call. Refer to [Call](#) for more information.

Rejecting a call

Reject an incoming call and send a rejection message to the caller.

Drag  **Reject** to the left to reject a call. To send a message when rejecting an incoming call, swipe upward from the bottom edge of the screen.

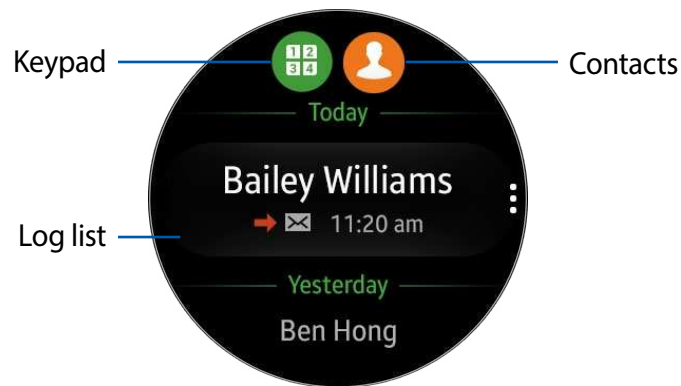
If the voice control feature is activated, say “**Reject**” to reject the call. Refer to [Call](#) for more information.

Missed calls






If a call is missed, a notification displays on the screen. On the Watch screen, rotate the bezel counter-clockwise to view missed call notifications, or tap **Phone** on the Apps screen to view missed calls.

Making calls

Tap **Phone** on the Apps screen.



Use one of the followings methods:

- Tap  **Keypad**, enter a number using the keypad, and then tap  **Phone**.
- Tap  **Contact**, select a contact, and then tap  **Dial** or select a phone number.
- Scroll through the log list, select a log entry, and then tap  **Dial**.

When you initiate a call on the Gear, the call automatically launches on your mobile device. Use your mobile device to talk.

S Health

Introduction

S Health™ helps you manage your wellness and fitness. Set fitness goals and regularly record and check your progress.

When the Gear is synced with a compatible S Health app, you can use additional features. The additional features include checking your heart rate logs individually, and more.

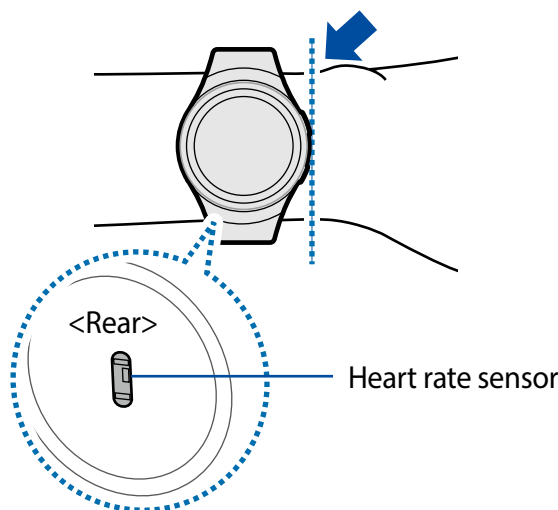


The accuracy of the heart rate sensor may be diminished depending on skin condition, or measurement conditions and surroundings. Take heart rate measurements when you are seated and relaxed.

Tap **S Health** on the Apps screen. Tap **START** when running this app for the first time or after performing a data reset.

Wearing the Gear correctly

When measuring your heart rate, wear the Gear snugly on your arm above your wrist as shown in the following figure. Do not fasten the Gear too tightly.



This device, S Health, and related software is not intended for use in the diagnosis of disease or other conditions, or in the cure, mitigation, treatment or prevention of disease.



Do not look directly at the heart rate sensor's lights. Doing so may impair your vision.

24-hour activity tracker

Your Gear can monitor and record your activities during the day and encourage you to stay healthy.

1 Tap **S Health** on the Apps screen.



- **Healthy activity:** Indicates whether you are walking or running. If you have made more than 100 steps per minute for at least 10 consecutive minutes, the Gear encourages you to keep going.
- **Light activity:** Indicates the time you spend doing light activity, but not doing hard exercise.
- **Inactive time:** Indicates the time you spend not walking or moving at all. If you sat idle for 50 minutes or more, the Gear prompts you to move more.

2 Tap the screen and rotate the bezel to view the details of your activity log.



Steps tracker

The Gear counts the number of steps you have taken and measures the distance traveled.

- 1 Tap **S Health** on the Apps screen.
- 2 Rotate the bezel clockwise and open the steps tracker panel.



- 3 Tap the screen to view a graph of your step count records. Rotate the bezel to view records by day.



Exercise tracker

Record your exercise information and calories burned using S Health's exercise feature.



When your Gear and mobile device are connected, this feature uses your mobile device's location information.

Exercising with the Gear

- 1 Tap **S Health** on the Apps screen.
- 2 Rotate the bezel clockwise and open the exercise tracker screen.
- 3 Tap  **Options** and select the type of exercise you want to monitor.
- 4 Tap  **OK** to allow this app to use your current location while exercising. Your location information sharing preference is saved as the default.

5 Rotate the bezel clockwise to select a target type.

6 Tap the target value.

7 Rotate the bezel to set the target and tap **SET**.

8 Tap **START** to start monitoring your exercise.

Your heart rate measurement begins. Start exercising when the measurement is completed. When you rotate the bezel you can view exercise information, such as calories burned and current speed.

Rotate the bezel counter-clockwise to listen to music using a Bluetooth headset.



- 9 Tap the screen and tap **FINISH** →  **Stop**. Rotate the bezel to view your exercise information.

Heart rate tracker

Measure and record your heart rate.




To measure your heart rate more accurately with the Gear, wear the Gear firmly around your lower arm just above the wrist. Refer to [Wearing the Gear correctly](#) for details.

Be aware of following conditions before measuring your heart rate:



This device, S Health, and related software is not intended for use in the diagnosis of disease or other conditions, or in the cure, mitigation, treatment or prevention of disease.

Measuring your heart rate

- 1 Tap **S Health** on the Apps screen.
- 2 Rotate the bezel clockwise and open the heart rate tracker screen.
- 3 Tap  **Hear rate** to begin measuring your heart rate.
After a moment, your current heart rate displays on the screen.
- 4 Select a status tag for your measured heart rate.
The Gear displays information about your heart rate in relation to your selected tag.




- 5 Tap the screen to view a graph of your records. Rotate the bezel to view records by day.

Tracking your heart rate

The Gear can automatically measure and track your heart rate. Your Gear measures your heart rate at regular intervals.



This feature may not function properly while you are moving.

To activate or deactivate this feature, rotate the bezel clockwise and open the settings screen, tap  **Options** → **Auto measuring HR** and tap the **Auto measure** switch.

Water tracker

Record and track how many glasses of water you drink.

- 1 Tap **S Health** on the Apps screen.
- 2 Rotate the bezel clockwise and open the water tracker screen.




- 3 Tap **+ Add** when you drink a glass of water.
If you accidentally added an incorrect value, you can fix it in the S Health app on your mobile device.
- 4 Tap the screen to view a graph of your records. Rotate the bezel to view records by day.

Caffeine tracker

Record and track how many cups of coffee you drink.

- 1 Tap **S Health** on the Apps screen.
- 2 Rotate the bezel clockwise and open the caffeine tracker screen.



3 Tap  **Add** when you drink a cup of coffee.

If you accidentally added an incorrect value, you can fix it in the S Health app on your mobile device.

4 Tap the screen to view a graph of your records. Rotate the bezel to view records by day.

Additional information




- Measured distance may differ from the actual distance due to uneven strides, walking in place, and pacing around.
- Only your most recent activity records are stored. You can view previous data on the mobile device where the S Health app is installed.

Running


Running records your exercising by tracking your distance, pace, and time. Check your monthly records and compare them with your friends.

Starting Running




You must download and install **Running** on the mobile device to use this app on the Gear.

- 1 On the Gear Apps screen, tap **Running**.
 - The mobile device displays a screen that prompts you to download and install **Running**.
- 2 On the mobile device follow the prompts to install **Running**.
- 3 Launch **Running**, tap **GET STARTED** →  **+ Running**, enter your email address and password, and then tap **LOG IN** → **DONE**.

Starting to exercise

- 1 On the Apps screen, tap **Running**.
- 2 Tap  **Run**.
- 3 Set your music, heart rate measurement, and encouragement preferences for your activity.
- 4 When you are finished, the Gear displays the Running main screen and starts to record your exercise.

Rotate the bezel counter-clockwise to view music playback controls while exercising.

Rotate the bezel clockwise to view your current location on a map.
- 5 When you are finished exercising, tap the screen and tap  **Pause** →  **Stop** →  **OK**.

Rotate the bezel counter-clockwise on the Running main screen to view your exercise records for this month.

Rotate the bezel clockwise on the Running main screen to compare your exercise records with friends. You can add your friends to compete with them.

Schedule

View the events scheduled on the mobile device.

- 1 Tap **Schedule** on the Apps screen.
- 2 Tap anywhere on the monthly calendar.
The current day's events list displays.
- 3 Rotate the bezel to clockwise to view upcoming events.

S Voice

Introduction

Perform various tasks simply by speaking.




Make sure the Gear's microphone is not obstructed when you are speaking into it.

Setting a wake-up command

You can launch S Voice using your own wake-up command. You can only use this feature when your Gear's screen is turned on.

When launching S Voice for the first time, tap  **OK** → **START** and set your own wake-up command.

To change the wake-up command, tap  **More options**, rotate the bezel to **Set command**, and then, tap **START** and follow the prompts.

Using S Voice

1 Say the preset wake-up command or tap **S Voice** on the Apps screen.


- When **S Voice** launches, the Gear begins voice recognition.

View examples of voice commands.



2 Say a voice command.

If the Gear recognizes the command, the Gear performs the corresponding action.

Tap  **Microphone** to repeat a voice command or say a different command.

Tips for better voice recognition

- Speak clearly.
- Speak in quiet places.
- Do not use offensive or slang words.
- Avoid speaking in dialectal accents.

The Gear may not recognize your commands or may perform unwanted commands depending on your surroundings or how you speak.

Setting the language

On the Apps screen, tap **S Voice** →  **More options** → **Language**, and then select a language.



The selected language is applied to **S Voice** only, not to the language displayed on the Gear.

Weather

View weather information on the Gear for locations set on the mobile device when the devices are connected.

- 1 Tap **Weather** on the Apps screen.
- 2 Tap the screen and rotate the bezel to view the current day's weather information.
- 3 Rotate the bezel clockwise to add other cities' weather information.





When your Gear and mobile device are connected, this feature uses your mobile device's location information.



Alarm

Setting alarms


- 1 Tap **Alarm** on the Apps screen.
- 2 Tap **Add alarm**.
If you have a saved alarm, tap **ADD** on the alarm list.
- 3 Set the alarm time by tapping an option and rotating the bezel, and then tap **NEXT**.
- 4 Select the days for the alarm to repeat and tap **SAVE**.
The saved alarm is added to the alarms list.

From the alarms list, tap  **OFF** to activate the alarm or tap  **ON** to deactivate the alarm.


Stopping alarms

Drag  **Stop** to the right to stop an alarm. If you want to use the snooze function, drag  **Snooze** to the left to repeat the alarm after 5 minutes.

Deleting alarms

In the alarms list, tap and hold an alarm, and then tap  **More options** → **Delete**.

Timer


- 1 Tap **Timer** on the Apps screen.
- 2 Tap an increment of time, and rotate the bezel to set the duration, and then tap **START**.
- 3 Drag  **Stop** to the right when the timer goes off.

Stopwatch

- 1 Tap **Stopwatch** on the Apps screen.
- 2 Tap **START** to time an event.
Tap **LAP** to record lap times while timing an event.
- 3 Tap **STOP** to stop timing.
Tap **RESUME** to restart the timing.
Tap **RESET** to clear lap times.
Swipe upwards from the bottom edge of the screen to view the stopwatch log.


Bloomberg

View the latest articles article summaries and stock indexes from Bloomberg.

- 1 Tap **Bloomberg** on the Apps screen.
- 2 Select a category and view the article summaries or stock indexes. Tap  **More options** → **Show on phone** to read the full article or view details for the index on your mobile device.

CNN

Read the latest articles from CNN on your Gear.

- 1 Tap **CNN** on the Apps screen.
- 2 Rotate the bezel to select a category.
- 3 Scroll up or down in the article list and tap an article to read it.
Tap  **Download** to read the full article.

Music Player

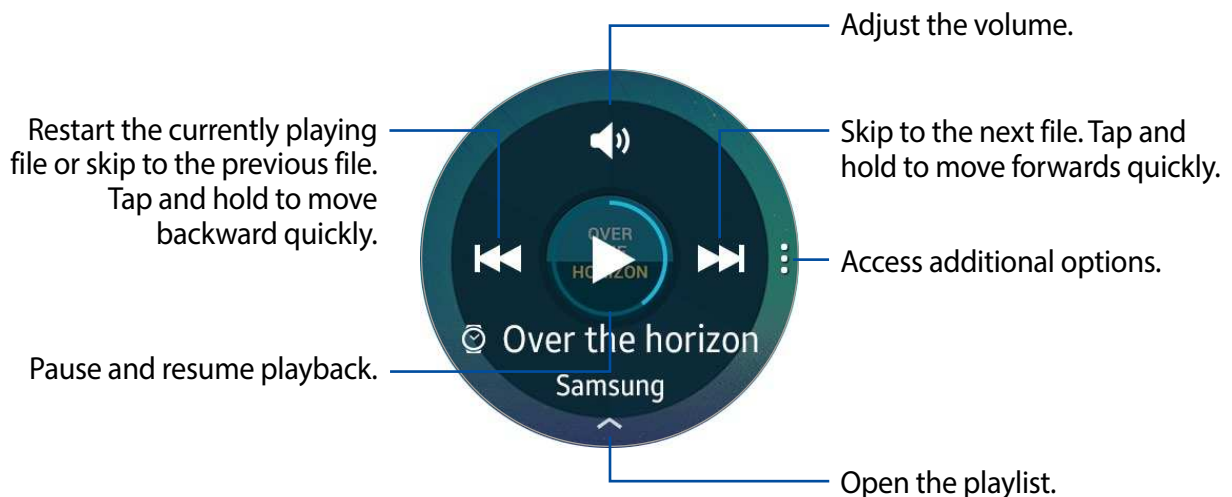
Introduction

Listen to music saved on the Gear and on the mobile device.

Playing music

Tap **Music Player** on the Apps screen.

To listen to music saved in your Gear, you must connect with a Bluetooth headset.



Playing music on your mobile device

When you select a mobile device to play music from, you can control playback of the music with your Gear. The music plays on your mobile device.

- 1 Tap **Music Player**.
- 2 Tap **More options**, rotate the bezel to **Play music from**, and then tap **Play music from**.
The music plays on your mobile device and the Gear displays the music controller screen.

Importing music

Import music saved in your device to your Gear.

- 1 On the Apps screen of the mobile device, tap **Samsung Gear**.
- 2 Tap **Send media**.
- 3 Tap **Select tracks**.
- 4 Select files and tap **DONE**.

To sync music in your mobile device with your Gear, open the Apps screen of the mobile device and tap **Samsung Gear** → **Send media**. Tap the **Auto sync** switch under **Music**, tap **Playlists to sync**, and then select playlists to export to the Gear. The selected playlists synchronizes while the Gear is charging.

Gallery

Introduction

View and manage images stored on the Gear.

Viewing images

- 1 Tap **Gallery** on the Apps screen.
- 2 Rotate the bezel to scroll through the image list and select an image.

Zooming in or out

While viewing an image, double-tap the image to zoom in or out.

Deleting images

- 1 Tap **Gallery** on the Apps screen.
- 2 Tap an image.
- 3 Tap and hold an image to delete.
A tick mark displays on the image.
- 4 Rotate the bezel and select any images you want to delete.
- 5 Tap **More options**, rotate the bezel to **Delete**, and then tap **Delete**.

Importing and exporting images

Exporting images to your mobile device

- 1 Tap **Gallery** on the Apps screen.
- 2 Tap an image.
- 3 Tap and hold the image to export.
A tick mark displays on the image.
- 4 Rotate the bezel and select any images to export.
- 5 Tap **More options**, rotate the bezel to **Send to phone**, and then tap **Send to phone**.

Importing images from your mobile device

- 1 On the Apps screen of the mobile device, tap **Samsung Gear**.
- 2 Tap **Send media**.
- 3 Tap **Select images**.
- 4 Select files and tap **DONE**.

To sync images in your mobile device with your Gear, open the Apps screen of the mobile device and tap **Samsung Gear** → **Send media**. Tap the **Auto sync** switch under **Image**, tap **Albums to sync**, and then select albums to import to the Gear. The selected albums are synchronized while the Gear is charging.

Buddy

Manage buddies on your Gear. You can select buddies from contacts saved in your mobile device. If you select a contact as a buddy, you can quickly initiate calls or send messages from the Gear.

Tap **Buddy** on the Apps screen.

Select a buddy and initiate a call or send a message.

Adding buddies

Rotate the bezel to **Add to list** and tap **Add to list**. Then, on your mobile device, select contacts you want to add.


Email

View emails received on the mobile device and reply to them.

Reading emails

1 On the Apps screen, tap **Email**.

2 Select an email to open the email screen.

To view an email on the mobile device, tap  **More options** → **Show on phone**.


To reply to a message, tap  **Reply** and enter your message.



You may not be able to reply emails depending on the mobile device that you connect to the Gear.




Find My Phone

If you misplace the mobile device, the Gear can help you find it.

- 1 Tap **Find My Phone** on the Apps screen.
- 2 Tap **Start**.
The mobile device emits sounds and turns on the screen.
- 3 Drag  **Stop** outside the large circle on the mobile device, or tap **Stop** on the Gear.

Maps

Find your location on the map, search for locations, and view location information for various places.



- ▶ On the Apps screen, tap **Maps**.
 - Tap  **My location** to view your current location.
 - Tap the screen and then tap  **Search** to search for a location.
 - Tap  **Route** to search for a route. If you want to view the detailed route, download the suggested app on your mobile device.

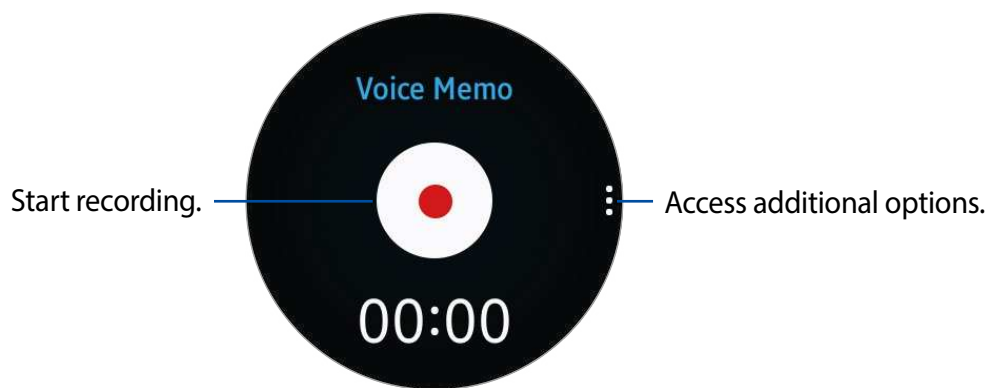
Voice Memo


Introduction

Use this app to record or play voice memos.

Recording voice memos

- 1 Tap **Voice Memo** on the Apps screen.
- 2 Tap  **Record** to start recording. Speak into the microphone.
Tap  **Pause** to pause recording.



- 3 Tap  **Stop** to finish recording.
 - The voice memo is saved on the Gear and the mobile device simultaneously.
 - To save the voice memo only on the Gear, on the Apps screen of the mobile device, tap **Samsung Gear** → **App settings** → **Voice Memo** → **Auto transfer**, set the interval and then tap the switch.

Saving as a text memo

While voice recording, the Gear recognizes the voice memo and changes into text and then saves it.

To change the recognition language, tap  **More options**, rotate the bezel to **Language**, and then tap **Language**.

To deactivate the feature, tap  **More options**, rotate the bezel to **Speech-to-text**, and then tap **Speech-to-text**.

Samsung Gear App

Introduction

To connect your Gear to a mobile device, you must install the Samsung Gear app on your mobile device. Using the Samsung Gear app, you can customize your Gear's settings.

Tap **Samsung Gear** on the Apps screen of the mobile device.

If it is the first time connecting your Gear and mobile device, refer to [Connecting the Gear to a mobile device](#) for more information.



Some features may not be available depending on the type of connected mobile device.

Connecting a new Gear

If you are currently using another Gear, you can disconnect it from the mobile device and connect a new one.

- 1 On the Apps screen of the mobile device, tap **Samsung Gear**.
- 2 Tap **MORE** → **Connect new Gear** and then select a new Gear.

Disconnecting the Gear

- 1 On the Apps screen of the mobile device, tap **Samsung Gear**.
- 2 Tap **MORE** → **Disconnect**. The Gear disconnects from your mobile device.
 - Tap **MORE** → **Connect** to reconnect the Gear.

Watch faces

You can change the type of watch to display on the Watch screen.

On the Apps screen of the mobile device, tap **Samsung Gear** → **Watch faces** and select a desired watch type. The watch face you selected is applied on the Watch screen.

Tap **STYLIZE** to select background and items to display on the watch face.

Notifications

Change settings for the notification feature. Stay up to date with a variety of events, such as new messages received on the mobile device.

On the Apps screen of the mobile device, tap **Samsung Gear** → **Notifications**, tap the switch to activate it, and then activate items.

- **Manage notifications:** Select apps on the mobile device to send notifications to the Gear.
- **Limit notifications:** Set the Gear to block all notifications, except for alarms, that are received when the mobile device's screen is turned on.
- **Turn screen on:** Set the Gear to turn on the screen when the notification is received.
- **Auto show details:** Set the Gear to show details for notifications when they are received.
- **Smart relay:** Set the mobile device to display notification information that displays on the Gear when you pick up the mobile device.



- This feature is only available when the Gear's screen is turned on.
- Some mobile devices do not support this feature.
- The mobile device must be unlocked to view details when the screen is locked.

Manage apps

Customize the Gear's Apps screen. You can select and rearrange apps.

On the Apps screen of the mobile device, tap **Samsung Gear** → **Manage apps**.

Uninstalling apps

Tap **UNINSTALL** and select apps to remove from the Gear.

Reordering apps

Tap  **Reorder** next to an app and drag it up or down to another position.

Send media

Transfer saved audio or image files from your mobile device to your Gear.

On the Apps screen of the mobile device, tap **Samsung Gear** → **Send media**.



When the Gear does not have enough available memory, it deletes files that you have not set as your favorites in order from oldest to newest.

- **Select tracks:** Select audio files and manually send them from the mobile device to the Gear.
- **Auto sync:** Set the device to sync audio files with the Gear while the Gear is charging.
- **Playlists to sync:** Select a playlist to sync with the Gear.
- **Select images:** Select images and manually send them from the mobile device to the Gear.
- **Auto sync:** Set the device to sync images with the Gear while the Gear is charging.
- **Albums to sync:** Select an image folder to sync with the Gear.

App settings

You can manage some app settings installed on the Gear.

- 1 On the Apps screen of the mobile device, tap **Samsung Gear** → **App settings**.
- 2 Select an app and configure the settings.

Samsung Gear Apps

You can download apps for your Gear from **Samsung Gear Apps**.

- 1 On the Apps screen of the mobile device, tap **Samsung Gear** → **Samsung Gear Apps**.
- 2 Browse by category and select an app to download.

Settings

Text templates

Edit or add templates used for replying to messages.

- 1 On the Apps screen of the mobile device, tap **Samsung Gear** → **Settings** → **Text templates**.
- 2 Tap **General messages** or **Call-reject messages**.
- 3 Select a template to edit.
To create additional templates, enter text in the input field and then tap **+ Add**.
- 4 Edit the template and tap **SAVE**.

Double press Home key

Set an action to perform when you press the Gear's Home key twice.

On the Apps screen of the mobile device, tap **Samsung Gear** → **Settings** → **Double press Home key**, and then select an option.

Connection

Customize your Gear's wireless connection settings.

On the Apps screen of the mobile device, tap **Samsung Gear** → **Settings** → **Connection**.

- **Use Remote connection:** Set the Gear to remotely connect to the mobile device when a Bluetooth connection between the devices is not available.
- **Sync Wi-Fi profiles:** Set the device to sync the list of saved Wi-Fi networks with your Gear.

Send SOS messages

Set the device to send help messages by pressing the Gear's Home key three times.

In an emergency situation, quickly press the Gear's Home key three times. The device sends messages to your primary contacts. The messages include your location information. You can also send sound recordings along with the message to the recipients.

- 1 On the Apps screen of the mobile device, tap **Samsung Gear** → **Settings** → **Send SOS messages**, and then tap the switch to activate it.
- 2 Follow the prompts to add primary contacts.
- 3 To send help messages with audio recordings, tap the **Send sound recording** switch to activate it.



Some mobile devices do not support this feature.

Adding primary contacts

- 1 On the Apps screen of the mobile device, tap **Samsung Gear** → **Settings** → **Send SOS messages** → **Send messages to**.
- 2 Tap **Create contact** and enter contact information or tap **Select from contacts** to add an existing contact as a primary contact.

Back up and restore

Back up the stored data on the Gear or restore backup data.

On the Apps screen of the mobile device, tap **Samsung Gear** → **Settings** → **Back up and restore** → **Back up data** or **Restore data**.

About Gear

Access information about the Gear.

On the Apps screen of the mobile device, tap **Samsung Gear** → **Settings** → **About Gear**.

- **Update Gear software:** Update the Gear to the latest software.
- **Gear storage:** View your Gear's memory information.



The actual available capacity of the internal memory is less than the specified capacity because the operating system and default apps occupy part of the memory. The available capacity may change when you update the device.

- **Legal information:** View the legal information for the Gear.
- **Unknown sources:** Set the Gear to allow the installation of apps from unknown sources.
- **Device name:** Change the Gear's name.

Application version

View version information of the Samsung Gear app.

On the Apps screen of the mobile device, tap **Samsung Gear** → **Settings** → **Application version**.

Find My Gear

Remotely control your Gear when it is lost or misplaced.



- **Reactivation lock:** Set the Gear to require your Samsung account information after the device was reset. This prevents others from reactivating your device if it is lost or stolen.
- **Control remotely:**
 - **Lock Gear:** Remotely lock the Gear to prevent unauthorized access. This feature can be activated when the Bluetooth connection between the Gear and mobile device ends while a remote connection is activated.
 - **Reset Gear:** Remotely delete all personal information stored in the Gear. After the Gear is reset, you cannot restore the information or use the Find My Gear feature.

Finding your Gear

If you misplace the Gear, find it with this feature.

1 On the Apps screen of the mobile device, tap **Samsung Gear** → **Find My Gear**.

2 Tap  **Search**.

The Gear vibrates and the screen turns on. Drag  **Stop** to the right on the Gear, or tap  **Gear** on the mobile device.

Reactivation Lock

Use your Samsung account to stop anyone from reactivating your Gear without your permission.

1 On the Apps screen of the mobile device, tap **Samsung Gear**.

2 Tap **Reactivation lock** and tap **ON/OFF** to enable or disable this feature.



You should remove your Google Account before shipping your device to Samsung or any other service provider for service and before resetting the device to factory settings.

Settings

Introduction

Customize settings for functions and apps. You can make your Gear more personalized by configuring various setting options.

Tap **Settings** on the Apps screen.

Display

Change the display settings.

On the Settings screen, tap **Display**.

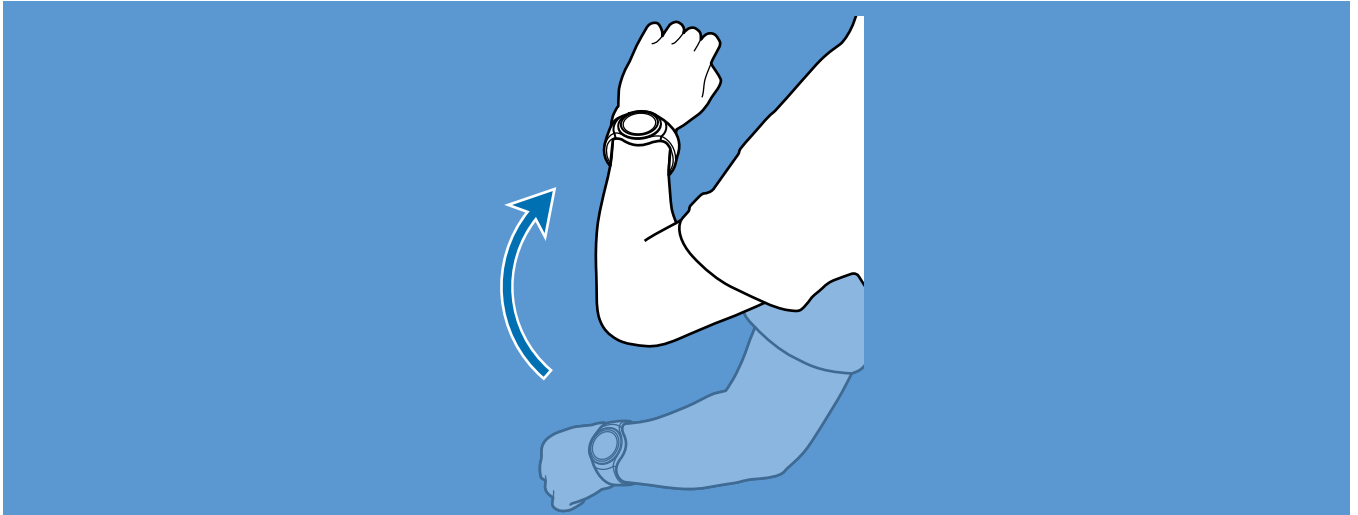
- **Watch faces:** Select a watch type.
- **Watch always on:** Set the Gear to display a watch when the screen is turned off.
- **Brightness:** Adjust the brightness for the display.
- **Font:** Change the font type and size.

General

Change the Gear's keys and motion settings.

On the Settings screen, tap **General**.

- **Home key:** Select an action to perform.
- **Gesture:** Set the Gear to turn on the screen when you raise your wrist.



Vibration

Change the vibration settings.

On the Settings screen, tap **Vibration**.

- **Intensity:** Adjust the intensity of the vibration notification.
- **Long buzz:** Increase the duration of the vibration.
- **Haptic:** Vibrate when the screen is touched, and when the watch ticks.

Call

Change the call feature settings.

On the Settings screen, tap **Call**.

- **Voice command:** Set the Gear to answer or reject calls using voice commands.

Connections

Bluetooth

Use Bluetooth to exchange data or media files with other Bluetooth-enabled devices.

On the Settings screen, tap **Connections** → **Bluetooth**.

- **Bluetooth:** Turn the Bluetooth feature on or off.
- **BT headset:** Search for Bluetooth headsets and connect them to the Gear.



The headset can be only used when playing music on the Gear.

Wi-Fi

Activate the Wi-Fi feature to connect to a Wi-Fi network.

On the Settings screen, tap **Connections** → **Wi-Fi**, and then tap the **Wi-Fi** switch to activate it.

Connecting to a Wi-Fi network

This feature is available when the Gear is not connected to the mobile device through Bluetooth.

- 1 On the Settings screen, tap **Connections** → **Wi-Fi**, and then tap the **Wi-Fi** switch to activate it.
- 2 Tap **Wi-Fi networks** → **SCAN**.
- 3 Select a network from the Wi-Fi networks list.
Networks that require a password display a lock icon.
- 4 Tap **CONNECT**.



Once the Gear connects to a Wi-Fi network, the Gear reconnects to that network each time it is available without requiring a password. To prevent the Gear connecting to the network automatically, select the network and then tap **FORGET**.

NFC

The Gear allows you to use the built-in technology to make payments and buy tickets for transportation or events after downloading and configuring the required apps.

On the Settings screen, tap **Connections** → **NFC**.

- **NFC:** Activate the NFC feature to link your Gear to your credit or debit card.
- **Tap and pay:** Set the default payment app for mobile payments.

Making payments with the NFC feature

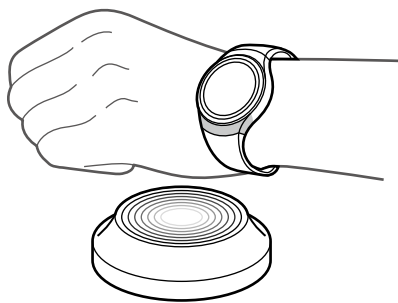
Before you can use the NFC feature to make payments, you must register for the mobile payment service. To register or get more information about the service, contact your service provider.

- 1 On the Settings screen, tap **Connections** → **NFC** and then tap the **NFC** switch to activate it.
- 2 Touch the NFC antenna area at the top of the Gear's touchscreen to the NFC card reader.

To set the default payment app, open the settings screen and tap **Connections** → **NFC** → **Tap and Pay**, and then select an app.



The payment services list may not include all available payment apps.



Screen lock

Set the Gear to use the screen lock feature when you are not wearing it.

On the Settings screen, tap **Screen lock**.

- **Screen lock:** Activate or deactivate the screen lock feature. Refer to [Setting the screen lock](#) for more information.
- **Help:** View help information for using the screen lock feature.

Input

Default keyboard

Select a default keyboard type for text input.

On the Settings screen, tap **Input** → **Default keyboard**.

Keyboard settings

Change the Samsung keyboard settings.

On the Settings screen, tap **Input** → **Keyboard settings** → **Samsung keyboard**.

- **Select input languages:** Select languages for text input.
- **Check update:** Set the Gear to check for and download the latest version of the Samsung keyboard.
- **Smart typing:**
 - **Predictive text:** Activate predictive text mode to predict English words based on your input and display word suggestions.
 - **Auto replace:** Set the Gear to correct misspelled and incomplete words by tapping the space bar.
 - **Auto capitalize:** Set the Gear to automatically capitalize the first character after a final punctuation mark, such as a period, question mark, or exclamation mark.
 - **Auto spacing:** Set the Gear to automatically insert a space between words.
 - **Auto punctuate:** Set the Gear to insert a period when you double-tap the space bar.
- **Key-tap feedback:**
 - **Vibration:** Set the Gear to vibrate when you tap a key.
- **Reset settings:** Reset the Samsung keyboard settings.

Power saving

Activate power saving mode to save battery power by limiting the Gear's functions.

- Displays colors on the screen as gray tones.
- Deactivates features, excluding phone, messages, and notifications.
- Deactivates the Wi-Fi feature.
- Limits the performance of the Gear's CPU.

1 On the Settings screen, tap **Power saving** → ✓ OK or press the Power key and tap **Power saving** → ✓ OK.

2 Tap **OFF** → ✓ OK to deactivate this mode.

Gear info

View the Gear's information.

On the Settings screen, tap **Gear info**.

- **About device:** Access information about the Gear.
- **Report diagnostic and usage info:** Set the Gear to automatically send the device's diagnostic and usage information to Samsung.
- **Reset Gear:**
 - **Light reset:** Delete data except media files and personal data.
 - **Factory reset:** Reset settings to the factory default values and delete all data. Refer to [Reactivation Lock](#) for more information.
- **Debugging:** Activate or deactivate USB debugging mode when developing apps for the Gear.