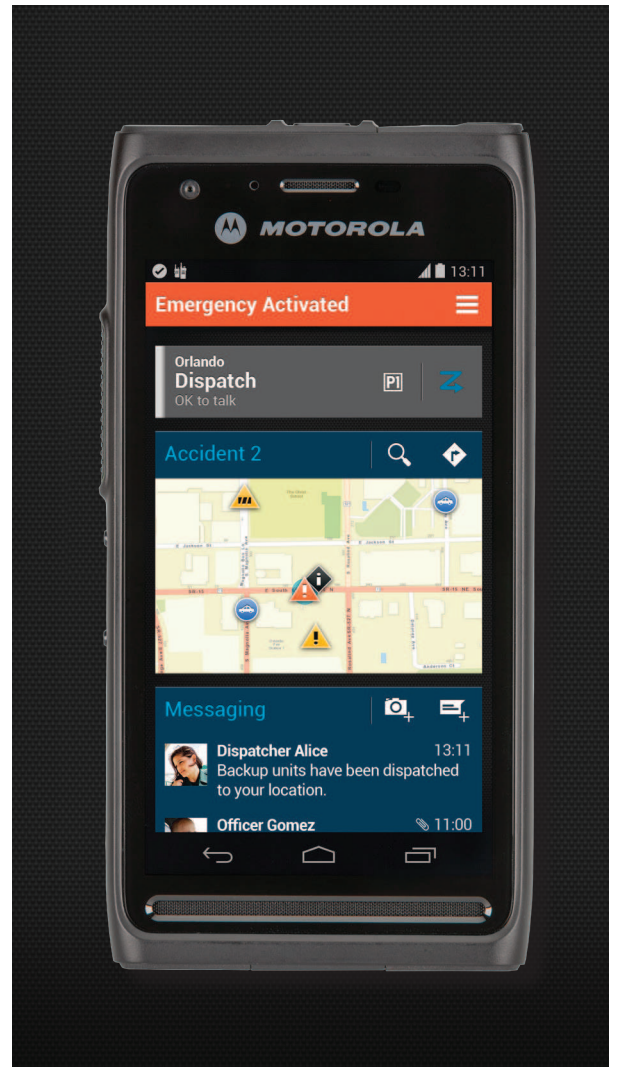
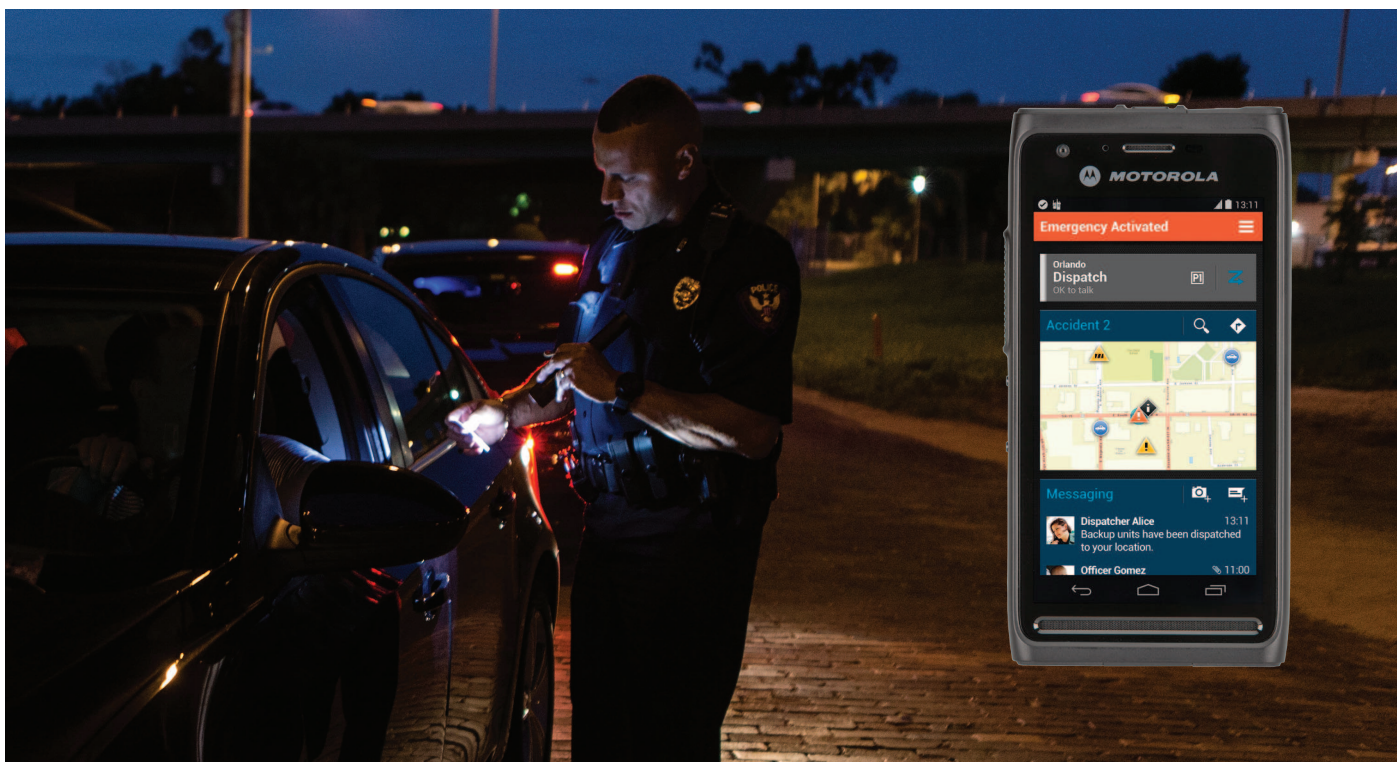


MOTOROLA LEX L10 MISSION CRITICAL LTE HANDHELD





PURPOSE-BUILT LTE FEATURING THE NEW PUBLIC SAFETY EXPERIENCE

LEX L10 MISSION CRITICAL LTE HANDHELD

The Motorola LEX L10 Mission Critical LTE Handheld is purpose-built to deliver the Public Safety Experience that responders need to work safer, smarter and faster. It addresses the unique requirements of public safety personnel by delivering the mission critical capabilities not available on consumer-grade smartphones.

MISSION CRITICAL PERFORMANCE

The sleek LEX L10 is ergonomically designed for one-handed operation with a no-slip grip texture on the removable battery cover and a 4.7-inch touch screen. It includes best-in-class audio performance with dual 1 Watt front-facing speakers, tri-microphone noise and echo cancellation and a dedicated, tactile push-to-talk (PTT) button for fast voice collaboration. With its high-capacity battery, you can be sure the LEX L10 will last the entire shift. When it does need charging, its compatible high-rate charger can restore the battery from zero to 80% in only 60 minutes.

The LEX L10 is secured with FIPS 140-2 Level 3 hardware encryption, Security Enhanced (SE) Android OS and Secure Boot to deter cyber threats. Operate your radio in covert mode by securely touch-pairing it with the LEX L10 via Mission Critical Bluetooth® in order to remotely control the radio's zones, channels, volume and activate an emergency. The LEX L10 can also be paired with Mission Critical Bluetooth wireless accessories for easy push-to-talk capability.

EXCEPTIONAL CONNECTIVITY

Whether it's data, photos, video or voice, the LEX L10 Mission Critical Handheld is designed to bring it to you quickly, reliably and securely. In the field, the LEX L10 delivers exceptional connectivity to 4G LTE. The LEX L10 can also connect to other networks, including carrier 3G/UMTS and Quad Band GSM. It also supports IMS/VoLTE and IMS/SMS services on 4G LTE in addition to circuit switch voice and SMS.

The LEX L10 Mission Critical LTE Handheld operates in:

4G LTE Bands: 3, 4, 5, 7, 8, 20, 26, 28

3G/UMTS Bands: 1, 2, 4, 5, 8

Quad Band GSM: 850 MHz, 900 MHz, 1800 MHz, 1900 MHz

802.11 a/b/g/n Wi-Fi and Miracast

DYNAMIC INTELLIGENCE

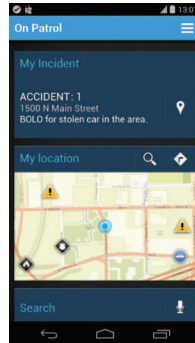
The device is equipped with the Public Safety Experience (PSX) user interface that is customizable, role-based and adaptive. It intelligently aggregates and prioritizes information to only present what is critical for the user, based on their current status and activity. On patrol, it prioritizes the surrounding environment, improving awareness. When an officer is dispatched, it highlights incident information and the best route to the scene so they can arrive faster and better prepared. On scene, it guides the user with the agency's custom workflow, enhancing safety and efficiency. A user interface built for you, PSX delivers the right information at the right time so you can focus on the mission at hand.

ADVANCING THE INTELLIGENT EDGE WITH THE NEXT GENERATION USER INTERFACE

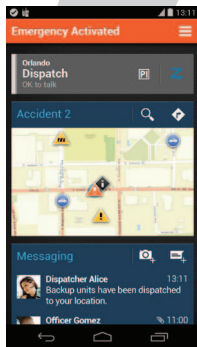
The PSX user interface adapts to changing tasks and environments, allowing the user to multi-task while providing situational awareness. It creates a unified user experience between devices and across agencies, creating more opportunities to collaborate and share information. It's an intuitive interface that puts safety above everything else by adapting and focusing only on what's needed. It presents information clearly and concisely, improving efficiency and eliminating error.



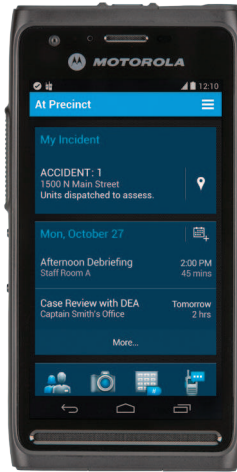
ON PATROL
Receive the awareness and use the tools that let you respond quickly.



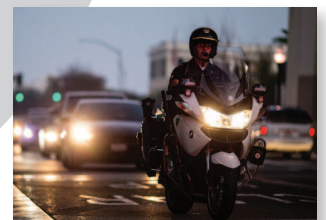
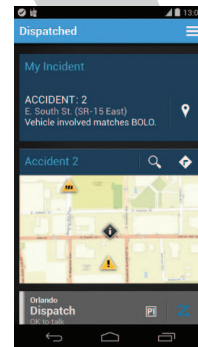
EMERGENCY
Stay connected as you see backup respond in real time.



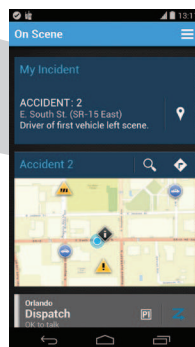
IN PRECINCT
Stay connected in the office, so you can be more productive



DISPATCHED
Arrive prepared with the critical incident information.



ON SCENE
See all the resources you rely on to be safe and effective.



WHAT TYPES OF DATA DEVICES DO YOU, OR YOUR FIRST RESPONDERS, USE ON THE JOB?

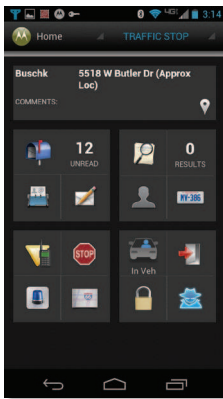
78%
USE SMARTPHONE



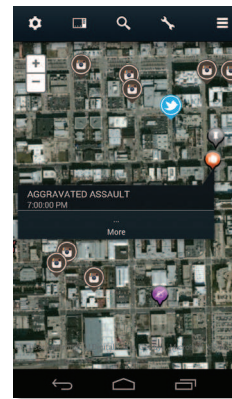
UNIFIED DATA: PUBLIC SAFETY APPLICATIONS DELIVER MISSION CRITICAL INTELLIGENCE

The LEX L10 supports a suite of public safety applications designed to leverage mission critical intelligence in the field. Motorola's public safety applications are purpose-built to improve situational awareness, deter crime and better connect with citizens. These applications also improve the agency's efficiency by automating manual processes, maximizing report accuracy and minimizing the time to process misdemeanors. As a result, officers can spend more time on patrol and less time doing paperwork. The responders see one view based on common location, tracking, presence, video feeds and other data sources to enable better collaborative actions. Network managers have visibility and control across the unified communications network, applications and fleet of devices.

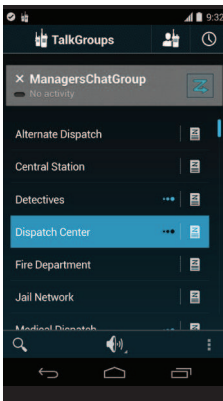
- Real-Time Video Streaming
- Electronic Citation
- Asset Tracking and Management
- Incident Command
- Computer Aided Dispatch (CAD)
- Query and Messaging
- Identity Verification
- Evidence Collection
- Broadband Push-to-Talk
- Email and Web
- False Alarm Management
- Report Writing
- Mapping and Navigation



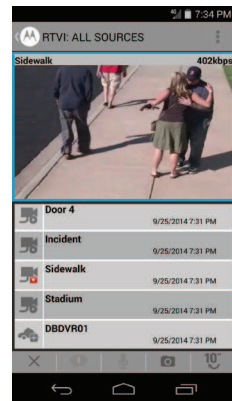
Applications built for Public Safety personnel and a customizable interface (PSX)



Intelligent Data Portal for layer-based mapping of people, resources, events, alerts and developing situations



WAVE Work Group Communications for seamless voice interoperability across Land Mobile Radio (LMR) systems and broadband networks



Real-Time Video Intelligence for streaming of live video and camera remote control

ENABLE DRAMATIC INCREASES IN PRODUCTIVITY, DATA ACCURACY AND REVENUES IN TODAY'S BUSINESS PROCESS

AVERAGE TIME TO PROCESS TICKET

PAPER CITATION **12 DAYS**
E-CITATION **MINUTES**

DATA ERROR RATE


MANUAL CAPTURE **30%**
AUTOMATED CAPTURE **1%**

TIME TO PROCESS MISDEMEANOR

AT STATION **8 HOURS**
ON SCENE **30 MINUTES**

THE ART OF MISSION CRITICAL DESIGN

The LEX L10 Mission Critical LTE Handheld delivers an exceptional combination of rugged hardware, powerful software and broadband connectivity.

<p>Front 2MP Camera</p> <p>Ambient Light / Proximity Sensors</p> <p>Textured PTT Button</p> <p>Up/Down Volume Buttons</p> <p>4.7" Capacitive Touch Screen</p> <p>Front Bottom Microphone</p> <p>Dual 1W Front-Facing Speakers</p>		<p>Recessed Power/Mode Button</p> <p>3.5 mm Headphone Jack</p> <p>Rubberized Top Surface</p> <p>Rear 8MP Camera</p> <p>Mission Critical Bluetooth</p> <p>High-Output LED Flash</p> <p>Rear Microphone</p> <p>Removable Battery Cover</p> <p>No-slip Grip Texture</p> <p>Ruggedized Construction</p> <p>Charger Docking Port</p>
<p>Rubberized Bottom Surface</p>  <p>Micro USB Port</p>		

LEX L10 ACCESSORIES

QUICK-ACCESS LEATHER HOLSTER

Meets public safety specifications and provides quick "eyes-off" access to volume and dedicated push-to-talk buttons.



DESKTOP CRADLE

Withstands spills, drops and vibration making it suitable for both the desktop and a command vehicle simultaneous charging and operation.. A USB 2.0 interface enables quick data synchronization with a desktop PC.



IMPACT-RATED VEHICLE CRADLE

Securely holds the LEX L10 and protects against impact while providing access to the display and buttons. Includes a rapid-charge vehicle adapter to quickly replenish the battery.



4G/LTE

Release	3GPP Release 9
Bands	3, 4, 5, 7, 8, 20, 26, 28
Output Power	23 dBm +/- 2 dB (UE power class 3)
Bandwidth	Up to 20 MHz Broadband data throughput depends on network conditions

3G

Standards	HSPA +/UMTS
Bands	1, 2, 4, 5, 8

2G

Standards	GSM/GPRS/EDGE
Frequencies	850 MHz, 900 MHz, 1800 MHz, 1900 MHz

WI-FI

Operating Band	2.4 GHz, 5 GHz
Standards	802.11 a/b/g/n

PERSONAL AREA NETWORKS

Bluetooth	Bluetooth 4.0 Low Energy (LE) + Enhanced Data Rate (EDR) Mission Critical Wireless Bluetooth Max throughput 2.1 Mbps A2DP Stereo Profile
-----------	---

GPS

Location Services	Standalone GPS Assisted GPS (aGPS)
-------------------	---------------------------------------

DEVICE MANAGEMENT

Remote management and configuration	Supports OMA-DM (Open Mobile Alliance Device Management)
-------------------------------------	--

VIDEO AND IMAGING

Supported Formats	H.263, H.264, MPEG-4 SP, VP8, JPEG (.jpg), GIF (.gif), PNG (.png), BMP (.bmp), WebP (.webp) Formats supported for playback, streaming and recording
Supported File Types	3GPP (.3gp), MPEG-4 (.mp4), WebM (.webm), (.mkv)
Video Recording Quality	1080p HD up to 30 frames per second (fps)

Note: Video and images are time stamped for evidence documentation

AUDIO

Supported Formats	MP3, WAVE, AAC, AMR-NB, AMR-WB, FLAC, MIDI, Vorbis
Supported File Types	MP3 (.mp3), WAVE (.wav), 3GPP (.3gp), MPEG-4 (.mp4, m4a), ATDS raw AAC (.aac), MPEG-TS (.ts), FLAC (.flac), MIDI (.mid, .xmf, .mxmf), RTTTL/RTX (.rtttl, rtx), OTA (.ota), iMelody (.imy), Ogg (.ogg), Matroska (.mkv)
Output	Dual 1 Watt Front-Facing Speakers, 106 dB Sound Pressure Level (SPL) 3.5 mm audio jack (stereo) Bluetooth (A2DP stereo)
Input	Triple Noise and Echo Cancelling Microphones

HARDWARE

Processor	2.3 GHz Quad Core Processor Qualcomm MSM8974AB
Display	4.7" 720p HD (720X1280) Capacitive, touch screen
Memory	2 GB RAM 16 GB eMMC Expandable to 64GB with microSD™ card
Camera	Rear 8MP Camera Auto Focus High-Output LED Flash Digital Zoom Front 2MP Camera
Sensors	Proximity Sensor Ambient Light Sensor Accelerometer Barometer E-Compass
Ports	USB 2.0 High-Speed 3.5 mm Audio Jack (stereo) Accessory/Charging Port
Battery	Standard - 2280 mAh, 10 hours High Capacity - 4560 mAh, 20 hours

PHYSICAL

Dimensions (H x W x D)	5.62 x 2.85 x .547 in 143 x 72.6 x 13.9 mm
Weight	195 g including standard battery
Durability	Continues to run after multiple drops to concrete from a height of 48 inches (121 cm) Drop tested using MIL-STD-810G Method 516.6, Procedure IV IP67 (1 meter water immersion up to 30 minutes)
Operating Temperature	14°F to 131°F (-10°C to +55°C)
Storage Temperature	-22°F to 149°F (-30°C to +65°C)

SOFTWARE

Operating System	Android™ KitKat 4.4.4
User Interface	Public Safety Experience (PSX) Software
Messaging	SMS/MMS Email (Corporate Sync, POP3, IMAP, Push Email)
Web	Standard AOSP Browser

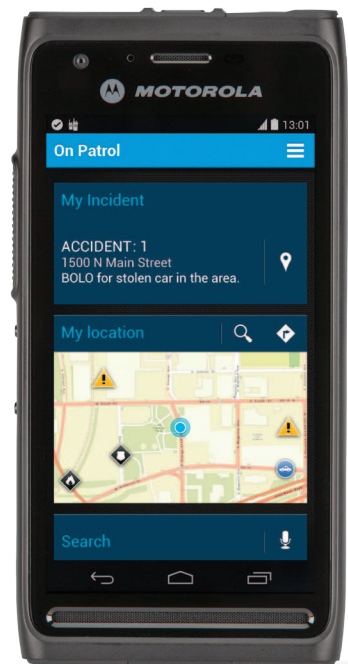
QUICK ACCESS LEATHER HOLSTER

Dimensions (H x W x D)	5.7 x 3.5 x 2.0 in (145 x 90 x 50 mm)
------------------------	--

GENERAL ACCESSORIES

	Desktop Cradle	Impact-rated Vehicle Cradle
PHYSICAL		
Dimensions (H x W x D)	6.0 x 5.0 x 3.5 in	Z
(152 x 128 x 89 mm)	6.1 x 3.0 x 2.2 in	
(155 x 76 x 56 mm)		
Weight	12.8 oz (363 g)	4.8 oz (135 g)
ENVIRONMENTAL SPECIFICATION		
Operating Temperature	32°F to 113°F (0°C to +45°C)	-4°F to 131°F (-20°C to +55°C)
Storage Temperature	-40° F to 158°F (-40°C to 70°C)	-40° F to 185°F (-40°C to +85°C)
Humidity	95% at 113°F (45°C) for 8 hours (non-condensing)	95% at 131°F (55°C) for 8 hours (non-condensing)
DURABILITY		
Salt Fog	Yes	Yes
Vibration	Yes	Yes
Drop	Yes	Yes
Shock (Functional)	Yes	Yes
Shock (Crash Hazard)		Yes, MIL-STD-810G, 75G impact
ESD	Yes	Yes
Solar Radiation		Yes
Liquid Resistance	Yes	Yes
SAFETY REGULATORY		
Electrical Safety	US: UL60950	US: UL60950
EMI/RFI	FCC part 15, Subpart B, Class B	
ANSI C63.4 2009	FCC part 15, Subpart B, Class B	
ANSI C63.4 2009		
Flammability	ANSI/UL-94 and ASTM Standards	ANSI/UL-94 and ASTM Standards
ELECTRICAL		
Power Supply	External power supply input 100-240VAC output 5.0VDC 1.2A	12V-24V, 5.0VDC, 1.2A
Power Input	5.0 VDC, 1.2A	5.0 VDC, 1.2A
DC Output	5.0VDC	5.0VDC
Power On	With device insertion	With device insertion
OPTIONAL ACCESSORIES		
Vehicle Ram® Mount Kit		

Specifications subject to change.





MOTOROLA LEX L10 MISSION CRITICAL LTE HANDHELD

For more information, please visit: www.motorolasolutions.com/LEXL10

Motorola Solutions, Inc. 1301 E. Algonquin Road, Schaumburg, Illinois 60196 U.S.A.

MOTOROLA, MOTO, MOTOROLA SOLUTIONS and the Stylized M Logo are trademarks or registered trademarks of Motorola Trademark Holdings, LLC and are used under license. All other trademarks are the property of their respective owners. ©2014 Motorola, Inc. All rights reserved. R3-36-1000