

Customer Information Sheet

DRAWING No.: SI711-XX

SHEET 2 OF 2

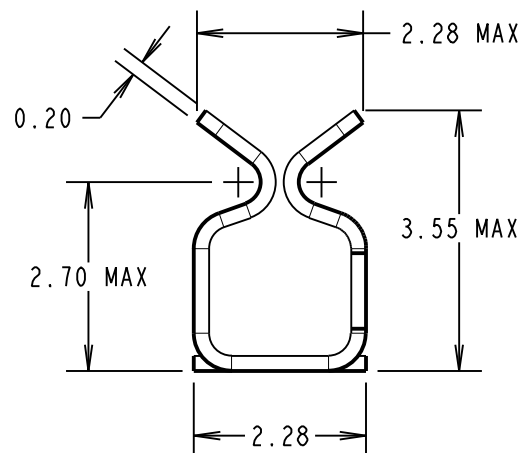
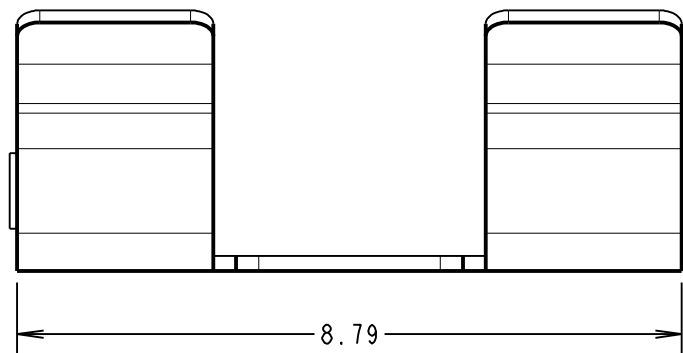
IF IN DOUBT - ASK

©

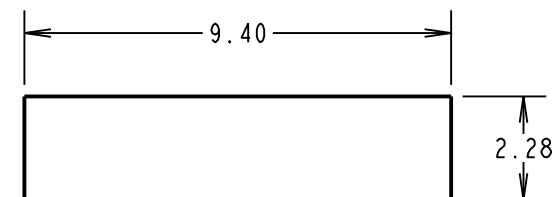
NOT TO SCALE

THIRD ANGLE PROJECTION

ALL DIMENSIONS IN mm



RECOMMENDED PAD LAYOUT



ORDER CODE:

SI711-XX

FINISH:

06 = TIN/LEAD

46 = 100% TIN OVER NICKEL

SPECIFICATION:

MATERIAL = BERYLLIUM COPPER

FINISH:

06 = 3μ 90/10 TIN/LEAD

46 = 3μ 100% TIN

ELECTRICAL:

CONTACT RESISTANCE = 20mΩ MAX

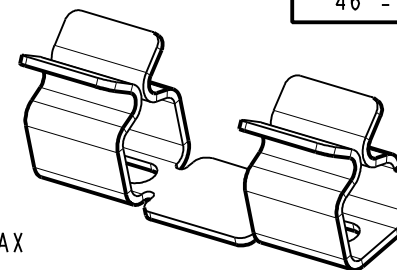
MECHANICAL:

INSERTION FORCE (AFTER CONDITIONING) = 4N MAX

WITHDRAWAL FORCE = 0.5N MIN

DURABILITY = 20 INSERTIONS MINIMUM

SHIELD THICKNESS = 0.17mm - 0.30mm



NOTES:

1. FOR TAPE AND REELED VERSION, SEE DRAWING SI711-XXR.
2. SUPPLIED IN A STRIP OF 100, PACKED IN A BAG.

MSP	6	16.12.14	12733
NAME	ISS.	DATE	C/NOTE
APPROVED:		M.PERREN	
CHECKED:		S.BENNETT	
DRAWN:		J.ENRIGHT	
CUSTOMER REF.:			
ASSEMBLY DRG:			

HARWIN

www.harwin.com
technical@harwin.com

THIS DRAWING AND ANY INFORMATION OR DESCRIPTIVE MATTER SET OUT HEREON ARE CONFIDENTIAL AND COPYRIGHT PROPERTY OF THE HARWIN GROUP AND MUST NOT BE DISCLOSED, LOANED, COPIED OR USED FOR MANUFACTURING, TENDERING OR FOR ANY OTHER PURPOSE WITHOUT THEIR WRITTEN PERMISSION.

TOLERANCES

X. = ±1mm
X.X = ±0.25mm
X.XX = ±0.10mm
X.XXX = ±0.01mm

ANGLES = ±5°

UNLESS STATED

MATERIAL:

SEE ABOVE

FINISH: SEE ABOVE

S/AREA: mm²

TITLE:

SMT RFI SHIELD CLIP
(LOOSE)

DRAWING NUMBER:

SI711-XX

SHT
2 OF 2