

# Customer Information Sheet

DRAWING No.: H3482-XX

SHEET 2 OF 2

IF IN DOUBT - ASK

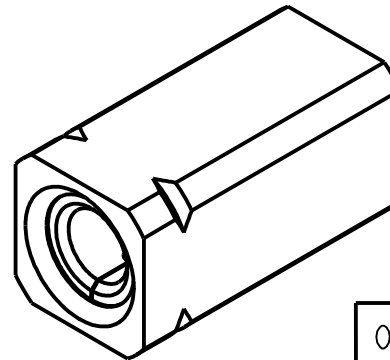
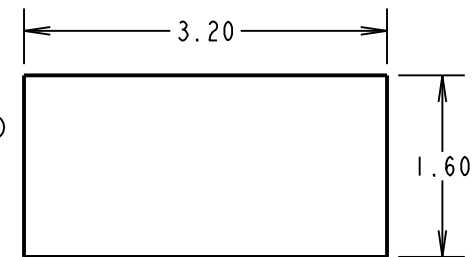
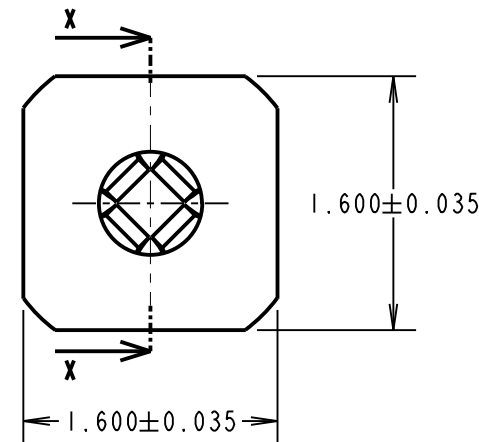
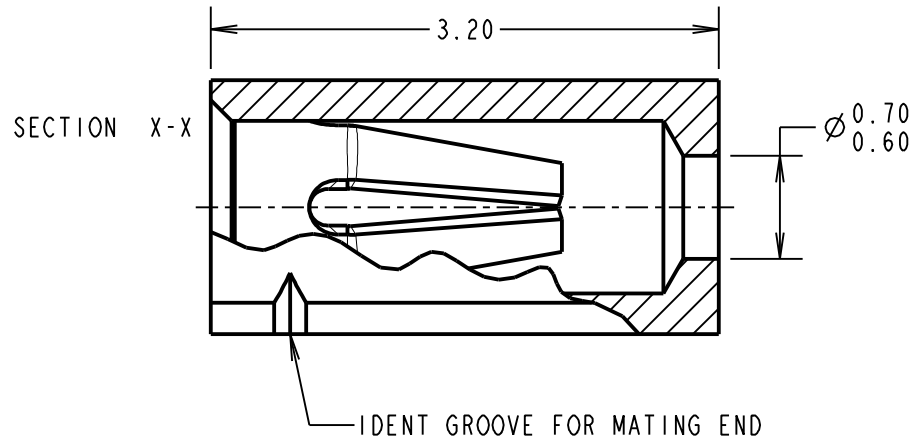
(C)

NOT TO SCALE

THIRD ANGLE PROJECTION

ALL DIMENSIONS IN mm

NOTES:  
1. FOR TAPE AND REELED VERSION,  
SEE DRAWING H3482-XXR.



**SPECIFICATIONS:**

**MATERIALS:**

SHELL = BRASS CW614N M TO BS EN 12164

CLIP = BERYLLIUM COPPER C17200 HM

**FINISH:**

- 01 = NICKEL ALL OVER,  
0.10-0.15 $\mu$  GOLD CLIP,  
3.5-5.0 $\mu$  90/10 TIN/LEAD SHELL (10% LEAD MIN)
- 42 = NICKEL ALL OVER,  
0.10-0.15 $\mu$  GOLD CLIP, 3.5-5.0 $\mu$  100% TIN SHELL

**ELECTRICAL:**

- CURRENT RATING AT 25°C = 3 AMPS
- CURRENT RATING AT 85°C = 1 AMP
- CONTACT RESISTANCE (INITIAL) = 15m $\Omega$  MAX
- CONTACT RESISTANCE (AFTER CONDITIONING) = 23m $\Omega$  MAX

**ENVIRONMENTAL:**

TEMPERATURE RANGE = -55°C TO +125°C

**MECHANICAL:**

- DURABILITY = 1000 OPERATIONS
- INSERTION FORCE ( $\varnothing 0.46$ mm GAUGE) = 5.0N MAX
- WITHDRAWAL FORCE ( $\varnothing 0.46$ mm GAUGE) = 0.5N MIN
- MATING PIN SIZE =  $\varnothing 0.53-0.41$ mm
- PIN LENGTH = 2.8mm

FOR COMPLETE MECHANICAL AND ELECTRICAL SPECIFICATION  
SEE COMPONENT SPECIFICATION C006XX (LATEST ISSUE).

ORDER CODE:

**H3482-XX**

FINISH:

- 01 - GOLD CLIP, TIN/LEAD SHELL
- 42 - GOLD CLIP, 100% TIN SHELL

MSP	10	03.11.14	12659
NAME	ISS.	DATE	C/NOTE
APPROVED:		M.PERREN	
CHECKED:		S.BENNETT	
DRAWN:		I.SANDY	
CUSTOMER REF.:			
ASSEMBLY DRG:			

**HARWIN**

www.harwin.com  
technical@harwin.com

THIS DRAWING AND ANY INFORMATION OR DESCRIPTIVE MATTER SET OUT HEREON ARE CONFIDENTIAL AND COPYRIGHT PROPERTY OF THE HARWIN GROUP AND MUST NOT BE DISCLOSED, LOANED, COPIED OR USED FOR MANUFACTURING, TENDERING OR FOR ANY OTHER PURPOSE WITHOUT THEIR WRITTEN PERMISSION.

**TOLERANCES**

- X. =  $\pm 1$ mm
- X.X =  $\pm 0.25$ mm
- X.XX =  $\pm 0.10$ mm
- X.XXX =  $\pm 0.01$ mm

ANGLES =  $\pm 5^\circ$

UNLESS STATED

**MATERIAL:**

SEE ABOVE

**FINISH:**

SEE ABOVE

**S/AREA:**

mm<sup>2</sup>

TITLE:  $\varnothing 0.5$ mm SURFACE MOUNT  
TEST SOCKET ASSEMBLY  
(TAPE AND REELED)

DRAWING NUMBER:

**H3482-XX**

SHT  
2 OF 2