



The DEETER Group®



T95 Load Cell

Folded shear beam load cell for high accuracy weighing
capacities 2 t to 20 t



Stainless steel load sensor

Tough and durable paint finish

Fully welded construction sealed to IP68

5 year warranty

Ease of installation

Integral lift off prevention

Load cell is always in tension

Ideal in vibrating applications

OIML C3 approved

Unique damping feature

The T95 range comprises of a stainless steel load cell complete with toughened auto-phoretic finish loading assembly. Although the assembly is used in compression, the cell is mounted in a pendulum and operated in tension. This ensures that the load point is always maintained through the central axis of the cell, even when the assembly is subjected to considerable movement or misalignment.

The T95 LA is most suitable for high accuracy applications and where movement or vibration are present.

eg. mixers, catalyst vessels, weighing platforms and axle weighers. It is also available with intrinsically safe certification ATEX EEx ia IIC T6, certified for use in both Gas and Dust Zones. Ex nA II T6 Gas only certification is also available which allows zone 2 use without safety barrier.

For applications in aggressive environments where stress corrosion or acid attack is an issue, a special parylene coating can be specified as an option. High temperature variants are also available.

All electrical equipment should be installed by a qualified electrician.

DEETER ELECTRONICS LTD

Deeter House, Valley Road, Hughenden Valley, Bucks. HP14 4LW
UK. Tel: +44 (0)1494 566 046 Fax: +44 (0)1494 563 961
Email: sales@deeter.co.uk Website www.deeter.co.uk

Distributed by:

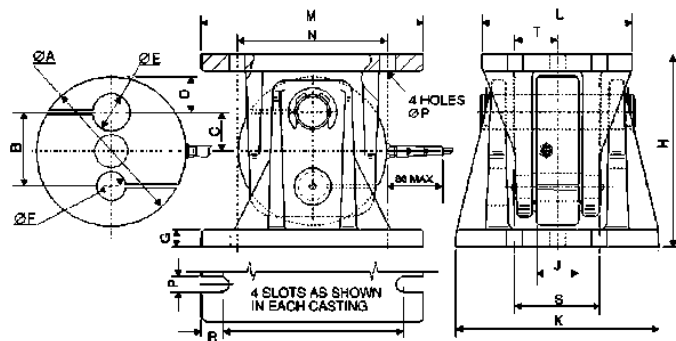


The DEETER Group®



| | Accuracy Class | | Units |
|--------------------------------------|----------------|--------------------------------|------------|
| | Commercial | C3# | |
| Capacities 2000 5000 10000 & 20000kg | Commercial | C3# | Units |
| Rated Output | 2 | 2 | mV/V±0.25% |
| Combined Error | <±0.05 | In accordance with OIML R60 | %* |
| Non-repeatability | <±0.02 | | %* |
| Temperature Effect on Zero Balance | <±0.0025 | | %* / °C |
| Temperature Effect on Span | <±0.0035 | | %* / °C |
| Compensated Temperature Range | -10 to +40 | | °C |
| Operating Temperature Range | -40 to +80 | -40 to +80 | °C |
| Safe Overload | 150 | 150 | %* |
| Ultimate Overload | 300 | 300 | %* |
| Zero Balance | < ± 1 | < ± 1 | %* |
| Input Resistance | 380 | 380 | Ω ± 30 |
| Output Resistance | 350 | 350 | Ω ± 1.5 |
| Insulation Resistance | >5000 | >5000 | MΩ @ 100v |
| Recommended Supply Voltage | 10 | 10 | V |
| Maximum Supply Voltage | 15 | 15 | V |

*With respect to rated output



| Range (kg) | A | B | C | D | E | F | G | H | J | K | L | M | N | P | Q | R | S | T |
|--------------|-----|----|------|----|------|----|----|-----|----|-----|-----|-----|-----|----|-----|----|-----|----|
| 2000 - 10000 | 134 | 66 | 35 | 32 | 32.5 | 26 | 15 | 174 | 38 | 182 | 135 | 200 | 135 | 16 | 170 | 15 | 70 | 35 |
| 20000 | 197 | 97 | 40.5 | 53 | 48 | 36 | 22 | 245 | 57 | 252 | 196 | 260 | 185 | 20 | 216 | 21 | 100 | 50 |

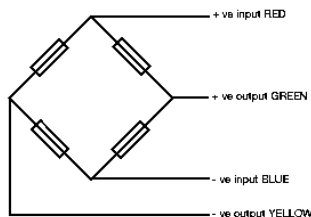
All dimensions in mm.

Note: Cell performance is characterised when tested in the specified loading assembly

Electrical Connections

Via 4 core, 10m, (20m for 20000kg model), 6mm dia., screened polyurethane cable.

Screen not connected electrically to load cell.



Shipping Weights: (kg)

Cell = 4 (10000), Cell = 11.5 (20000)
LA 95 = 14 (10000), LA95 = 38.5 (20000)

Construction

Load Cell manufactured from 17-4PH stainless steel heat treated to H900 condition - 1379N/mm² UTS.

Options

#C3, 20000kg version is in alloy steel only.

All electrical equipment should be installed by a qualified electrician.

DEETER ELECTRONICS LTD

Deeter House, Valley Road, Hughenden Valley, Bucks. HP14 4LW
UK. Tel: +44 (0)1494 566 046 Fax: +44 (0)1494 563 961
Email: sales@deeter.co.uk Website www.deeter.co.uk

Distributed by: