

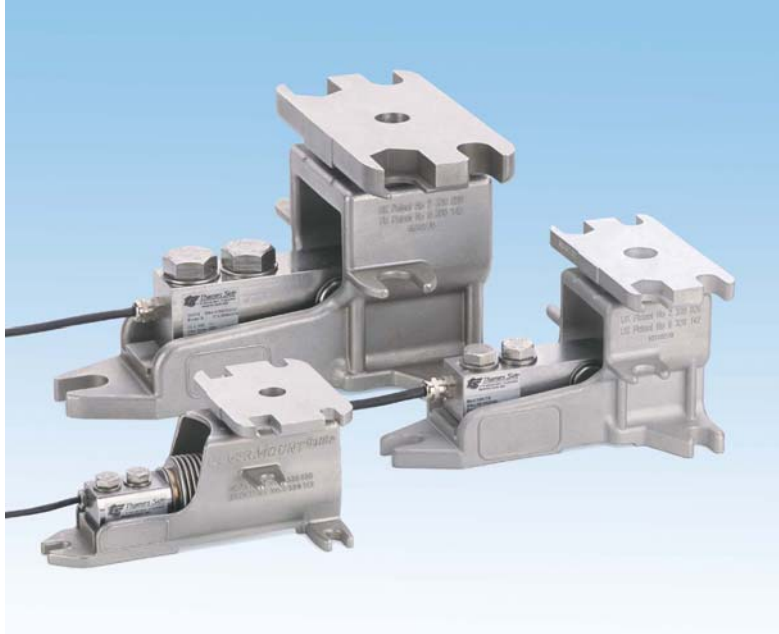


The DEETER Group®



LeverMount® for T66 and 350i Load Cells

Unique, patented and cost effective solution for process weighing applications
capacities 10kg to 5000kg



Purpose designed stainless load cell and mount arrangement	LeverMount® can be raised and lowered under load without jacking
Load cell removal without jacking or dummies	Straightforward, low cost installation without specialist tooling
High stability three point mounting	Substantial lift off prevention
Easily configurable for radial or tangential mounting	Tolerant of steel work misalignment
Allows for vessel expansion and contraction	Stainless steel OIML C3 approved load cell, fully welded, sealed to IP68

LeverMount® is the latest development in load cell weighing assemblies.

Process weighing installations are made easier, safer and more cost effective using this simple, innovative design.

Load cells approved to 3000 divisions OIML R60 Class C.

Available with ATEX certification for hazardous area applications. For applications in aggressive environments where stress corrosion or acid attack is an issue, a special parylene coating can be specified as an option. High temperature variants are also available.

All electrical equipment should be installed by a qualified electrician.

DEETER ELECTRONICS LTD

Deeter House, Valley Road, Hughenden Valley, Bucks. HP14 4LW
UK. Tel: +44 (0)1494 566 046 Fax: +44 (0)1494 563 961
Email: sales@deeter.co.uk Website www.deeter.co.uk

Distributed by:



The DEETER Group®



The concept of a purpose designed loading assembly using single ended shear beam load cells for vessel weighing was first introduced in the early 1980's. LeverMount® is the latest generation of load cell weighing specifically designed to offer a completely fresh approach to process weighing solutions. Utilising our range of shear beam and bending beam load cells, the patented LeverMount® retains all of the advantages of previous mount designs, whilst providing improved mechanical stability before, during and after installation.

The top plate of the LeverMount® can be raised and lowered under load without specialist tools. Additionally, the load cell can be removed or replaced without the need for external jacks or dummy load cells. Two types of load cell interface can be specified; a load button and saddle arrangement with expansion/contraction adjustment for static applications such as hoppers and tanks and a ball and cup, self centering, option for dynamic applications such as floor scales.

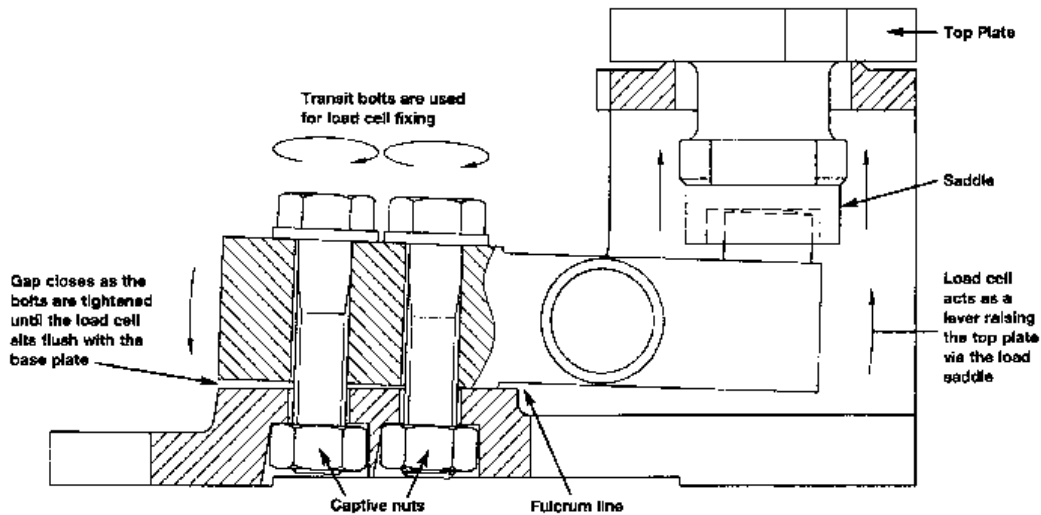
UNIQUE & SIMPLE

Many other designs of mounting assembly provide a threaded jacking feature which allows a vessel to be supported by the mount prior to the installation of the load cells, however under most load conditions, an external jack is needed to raise and lower the vessel, and threads can become clogged with dirt or powder, rendering the integral jacking mechanism unusable, even under low loads.

LeverMount's® unique patented design is such that no separate support arrangements are necessary to raise and lower the vessel. The base casting itself provides a stable load-bearing platform prior to installation of the load cell. Once the vessel is in position and the two transit bolts are removed, the load cell is used as a lever to raise the top plate of the mount into the working position, regardless of whether the vessel is empty or full. Removal of a load cell at any time is accomplished by reversing the procedure, and requires no jacks, dummy load cells or specialist tools. Installation, operation and maintenance of the vessel weighing system is consequently made safer, easier, swifter and less costly.

Load cells for use in the LeverMount® can be specified with ATEX EEx ia IIC T6 certification for both dust and gas in all zones as well as certification which allows Zone 20, 21 and 22 use without safety barriers. High temperature versions are also available for operation up to 150°C utilising special high temperature components and PTFE Teflon cable.

LeverMount® is just one product in our extensive range load cell and mount arrangements, with capacities from 10kg up to 600 tonnes, designed specifically for process weighing and materials storage applications.



All electrical equipment should be installed by a qualified electrician.

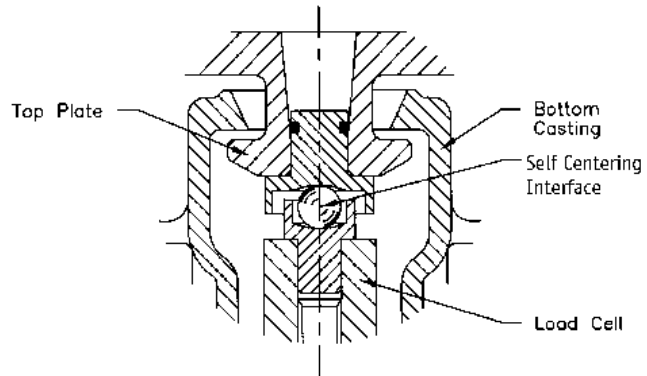
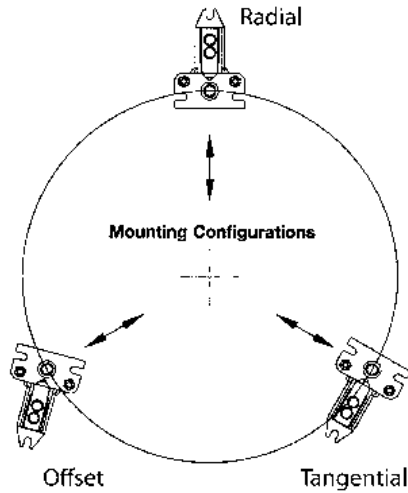
DEETER ELECTRONICS LTD

Deeter House, Valley Road, Hughenden Valley, Bucks. HP14 4LW
 UK. Tel: +44 (0)1494 566 046 Fax: +44 (0)1494 563 961
 Email: sales@deeter.co.uk Website www.deeter.co.uk

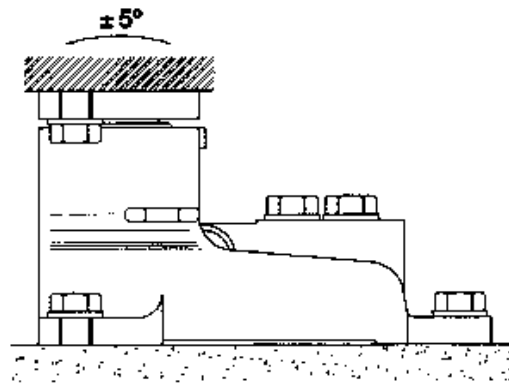
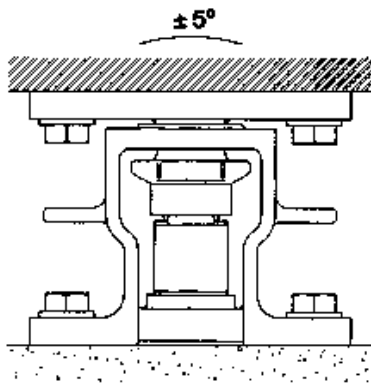
Distributed by:



The DEETER Group[®]



FEATURES	BENEFITS
• Purpose designed cast steel mount and stainless steel load cell	• Ideal for process weighing applications that require an accurate, safe and cost effective solution
• Simple two part casting using the transit bolts with captivated nuts for load cell fixing	• Aesthetically pleasing design, eliminating the need for additional machining and special bolts
• Stainless steel, IP68, fully welded, single ended shear beam load cell	• Suitable for use in the harshest of industrial environments
• Load cell acts as the lever to raise and lower the top plate and vessel	• No need for alternative lifting devices such as pad jacks
• Vessel can be raised and lowered under load	• Easier, quicker and safer than alternative mount arrangements
• No jacking screws or support pillars	• No stripped threads or top plate interference
• Three point support and fixing	• Eliminates rocking and twisting in the mount, always finds a plane
• Top plate movement in the lateral and rotational axis	• Tolerant of steel work misalignment avoiding any mechanically induced errors
• Configurable for radial, tangential or offset mounting	• Easy alignment to the radial axis of the vessel to compensate for expansion and contraction.
• Substantial anti-lift facility, over 50% of maximum rated load	• Increased safety
• Minimal difference between the working height and the installed height	• Reduces the need to adjust for pipe work without flexible connections
• Load cell can be easily removed under load in situ	• Less down time
• Three physical sizes cover the range from 10kg to 5000kg	• Covers the majority of process weighing applications



All electrical equipment should be installed by a qualified electrician.

DEETER ELECTRONICS LTD

Deeter House, Valley Road, Hughenden Valley, Bucks. HP14 4LW
 UK. Tel: +44 (0)1494 566 046 Fax: +44 (0)1494 563 961
 Email: sales@deeter.co.uk Website www.deeter.co.uk

Distributed by:



The DEETER Group®

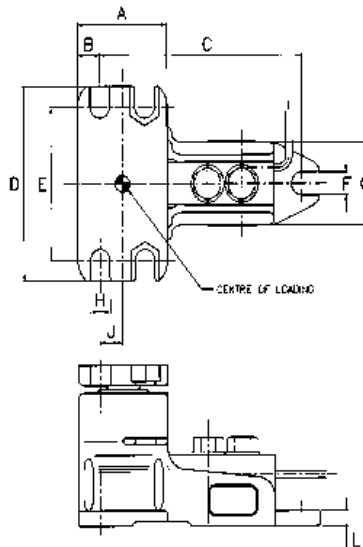


	LeverMount Lite	Units	LeverMount
Load Cell Approval	3000 divisions (C3) OIML R60 Class C		3000 divisions (C3) OIML R60 Class C
Load Ranges	10, 20, 50, 100, 150, 200	kg	300, 500, 1000, 2000, 3000 & 5000
Rated Output	2+/- 0.1%	mV/V	2±0.15%
Combined Error	<±0.017	%*	<±0.017
Non-repeatability	<±0.015	%*	<±0.015
Creep (30 minutes)	<±0.016	%*	<±0.016
Temp Effect on Zero Balance	<±0.002	%*/°C	<±0.002
Temp Effect on Span	<±0.0012	%*/°C	<±0.0012
Compensated Temp Range	-10 to +40	°C	-10 to +40
Operating Temp Range	-20 to +70	°C	-20 to +70
Safe Overload	150	%*	150
Ultimate Overload	300	%*	300
Zero Balance	<±1	%*	<±2
Input Resistance	400±20	ohms	400±20
Output Resistance	350±3	ohms	350±3
Insulation Resistance	>5000	Mohms @ 100V.dc	>5000
Recommended Supply Voltage	10	V	10
Maximum Supply Voltage	15	V	15
Cable Length	4	m	5
Protection Class	IP68		IP68

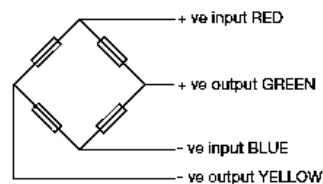
*With respect to rated output

Shipping Weights: (kg)
 10, 20, 50, 100, 150, 200 = 1.2kg
 300, 500, 1000, 2000 = 4 kg
 3000, 5000 = 9 kg.

Construction
 Mount manufactured from cast 316 stainless steel.
 Load cell manufactured from high strength 17-4PH stainless steel, electro-polished, fully welded and sealed to IP68.



Capacity (kg)	A	B	C	D	E	F	G	H	J	K	L	M
20, 50, 100 & 200	70	16	147	100	80	9	55	9	19	80	7	8
300, 500, 1000, 2000	70	16	168	132	108	14	60	14	19	110	12	12
3000, 5000	100	25	225	190	150	22	80	22	25	164	15	20



Electrical Connections
 *Via 4 cores, 7/0.2mm², screened polyurethane cable.

Screen is not connected electrically to the load cell.

All electrical equipment should be installed by a qualified electrician.

DEETER ELECTRONICS LTD

Deeter House, Valley Road, Hughenden Valley, Bucks. HP14 4LW
 UK. Tel: +44 (0)1494 566 046 Fax: +44 (0)1494 563 961
 Email: sales@deeter.co.uk Website www.deeter.co.uk

Distributed by: