

The **DEETER** Group®

deeternet® Wireless Gateway



Overview

- Wirelessly view data from up to 200 sensors
- Ethernet connected for easy data access using a web browser
- Utilises the robust & secure IEEE 802.15.4 industrial wireless communication protocol
- Customisable set points for email and SMS alerts
- Connects to most 3rd party sensors with the addition of a deeternet® Wireless Sender
- Plug and Play operation with supported deeternet® wireless hardware
- User friendly web interface allows viewing of sensor data at a glance

The deeternet® Wireless Gateway operates as the heart of a deeternet® Wireless Sensor Network. The Gateway allows for the remote monitoring of up to 200 sensor signals via a PC.

The network is easily configured with each connection registering with the Gateway once and then being remembered by the network. The network itself is self-organizing and the addition of deeternet® Wireless Routers will allow for the network to optimize connections with the Gateway.

The deeternet® Wireless Sender allows customers to take an existing wired sensor and connect it wirelessly to the Gateway removing the need to replace the existing sensor with a more expensive wireless version.

Deeter House
Valley Road
Hughenden Valley
Bucks HP14 4LW

Tel: +44 (0)1494 566 046
Fax: +44 (0)1494 563 961
Email: sales@deeter.co.uk



www.deeter.co.uk

The **DEETER** Group®

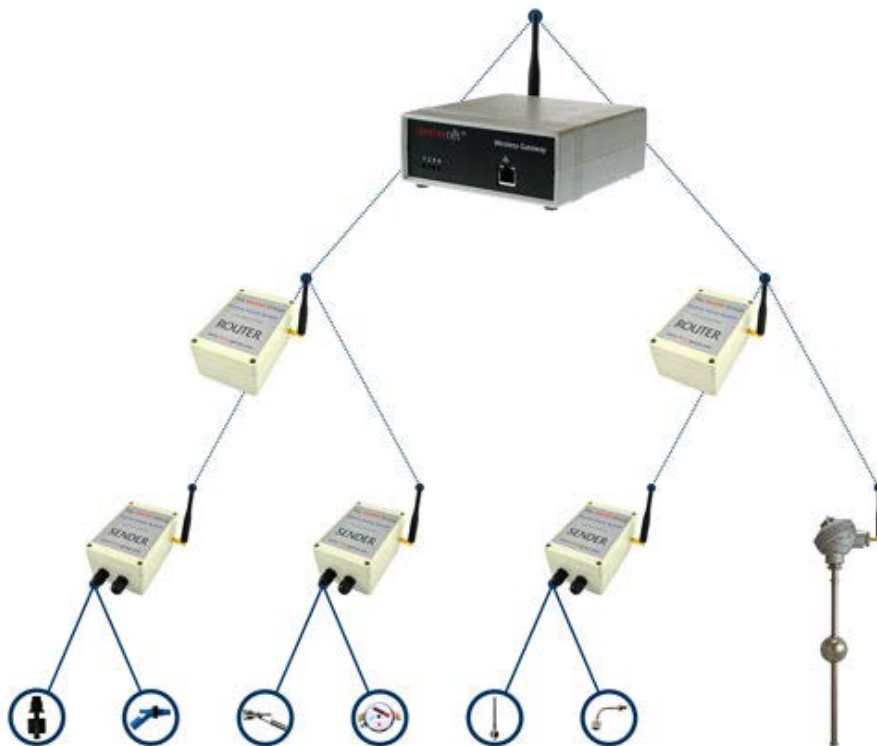
deeternet® Wireless Gateway

Wireless communication uses the internationally recognised IEEE 802.15.4 protocol in the 2.4GHz ISM radio band. Range can be more than 1km, subject to environmental factors, and greater distances can be achieved by incorporating the deeternet® Wireless Router.

When connected to a LAN the deeternet® Wireless Gateway data can be viewed on any device connected to the LAN. This is controlled via username and password but allows engineers to access the data from any device with access to the LAN, and a supported web browser. The LAN can also be configured to allow remote (outside the LAN) access to the Gateway sensor data.

The deeternet® Wireless Gateway can handle up to 200 Sensor inputs in an optimised system using 40 deeternet® Wireless Senders and a network of ideally 4 deeternet® Wireless Routers.

This setup allows for 160 discrete input signals and 40 Resistive inputs such as a Deeter LVCS Sensor.



Deeter House
Valley Road
Hughenden Valley
Bucks HP14 4LW

Tel: +44 (0)1494 566 046
Fax: +44 (0)1494 563 961
Email: sales@deeter.co.uk



www.deeter.co.uk

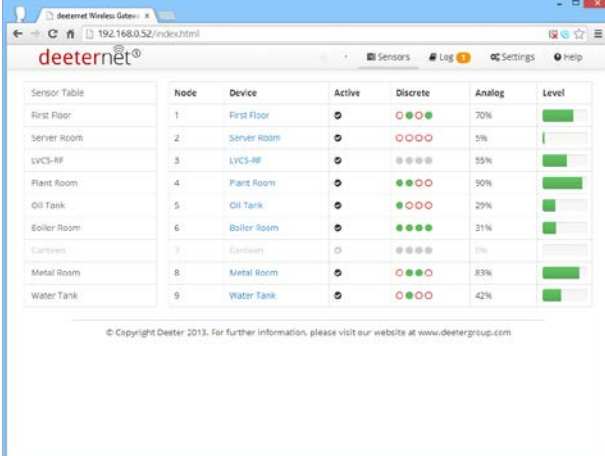
The DEETER Group®

deeternet® Wireless Gateway

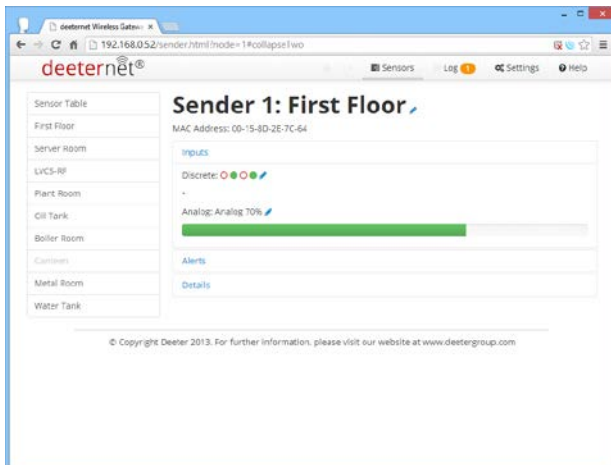
The sensor data transmitted to the Gateway is displayed in a web browser allowing for user-friendly data monitoring without the need for installing 3rd party software on the PC.

The main sensor data is displayed in a sensor table, allowing all sensor data to be viewed in one place for an easy overall system status check.

The sensor table provides a quick visual representation of the signal data to the user.



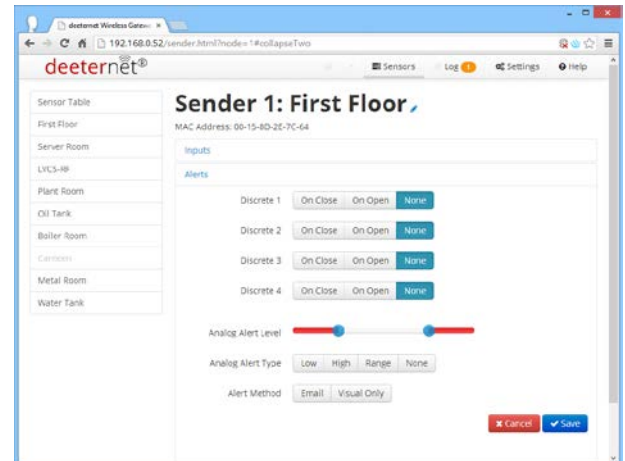
Sensor Table	Node	Device	Active	Discrete	Analog	Level
First Floor	1	First Floor	●	●●●○	70%	<div style="width: 70%;"></div>
Server Room	2	Server Room	●	○○○○	5%	<div style="width: 5%;"></div>
LVCS-RP	3	LVCS-RP	●	●●●●	55%	<div style="width: 55%;"></div>
Plant Room	4	Plant Room	●	●●●○	90%	<div style="width: 90%;"></div>
Oil Tank	5	Oil Tank	●	●○○○	29%	<div style="width: 29%;"></div>
Boiler Room	6	Boiler Room	●	●●●●	21%	<div style="width: 21%;"></div>
Carrievan	7	Carrievan	○	○○○○	0%	<div style="width: 0%;"></div>
Metal Room	8	Metal Room	●	●●●●	83%	<div style="width: 83%;"></div>
Water Tank	9	Water Tank	●	○○○○	42%	<div style="width: 42%;"></div>



For a more in-depth view, each individual deeternet® Wireless Sender's data can be accessed individually.

It is via this screen that the individual signals can be renamed to the users' requirements.

It is possible to setup alerts for any changes in the state of



discrete signals and also out of range values on analogue signals.

The alerts can be set to provide notifications via email or SMS* and are also logged by the gateway for user review.

Deeter House
Valley Road
Hughenden Valley
Bucks HP14 4LW

Tel: +44 (0)1494 566 046
Fax: +44 (0)1494 563 961
Email: sales@deeter.co.uk

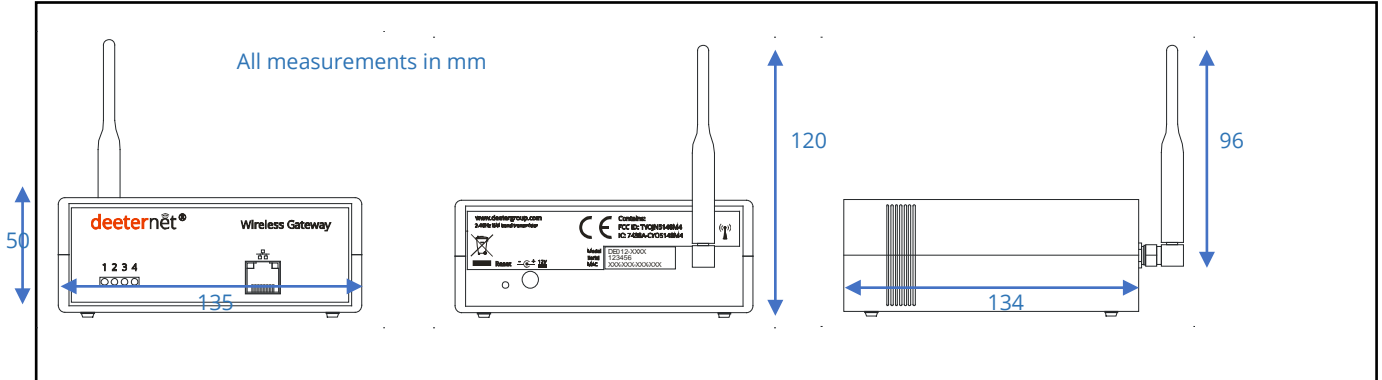


www.deeter.co.uk

The DEETER Group®

deeternet® Wireless Gateway

Dimensions



Specifications

Management	HTTPS Web Interface, Password access control, IP service port control	Security	TBC
Protocols	TCP/IP	Dimensions	134 x 135 x 50mm
Total Memory	SD Card	Weight	290g
LEDs	TBC	Wireless Protocol	IEEE 802.15.4
Antenna	Half Wave dipole	Antenna Dimensions	96mm
Ports	1x RJ-45 Port	Physical Layer	100 Base-TX
Power Input	10V-26V	Power Supply	12VDC @<200mA
Operating Temp'	-20°C to +70°C	IP Rating	IP41

Deeter House
Valley Road
Hughenden Valley
Bucks HP14 4LW

Tel: +44 (0)1494 566 046
Fax: +44 (0)1494 563 961
Email: sales@deeter.co.uk



www.deeter.co.uk

The DEETER Group®

deeternet® Wireless Gateway

Ordering Information

Description	Ordering Code
deeternet® Wireless Gateway	DE012-0220
Antenna Extension Cable and mounting kit	DE012-0123

Related Products



All electrical equipment should be installed by a qualified/certified electrician.

The Deeter Group follows a policy of continual development of its products and reserves the right to change specifications and/or features without notice.

Deeter House
Valley Road
Hughenden Valley
Bucks HP14 4LW

Tel: +44 (0)1494 566 046
Fax: +44 (0)1494 563 961
Email: sales@deeter.co.uk



www.deeter.co.uk