



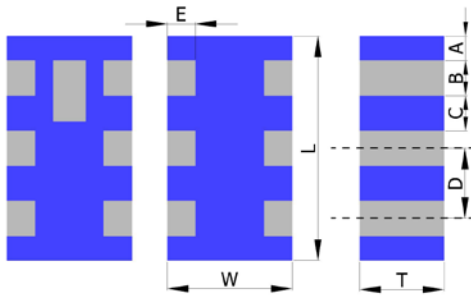
PRODUCT FEATURES

1. Surface mount diplexer with a small size of 2.0 X 1.25 X 0.95 mm, RoHS compliant.
2. Provide low insertion loss and high attenuation.
3. Highly stable under temperature and humidity changes.

RF CHARACTERISTICS

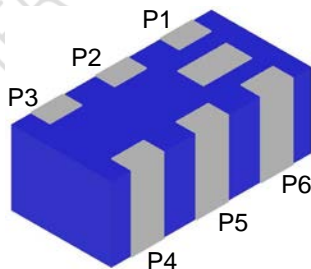
PN DP2549K0805DT	Specification	
Frequency range	2400-2500 MHz	4900-5900 MHz
Impedance	50 Ω	50 Ω
VSWR	2.0 max	2.0 max
Insertion Loss	0.7 dB max.	0.9 dB max.
Attenuation (min.)	20dB @ 4900MHz 25dB @ 5200MHz 25dB @ 5800MHz	25dB @ 2450MHz
Operation Temperature Range	-40°C to +85°C	

PHYSICAL DIMENSIONS



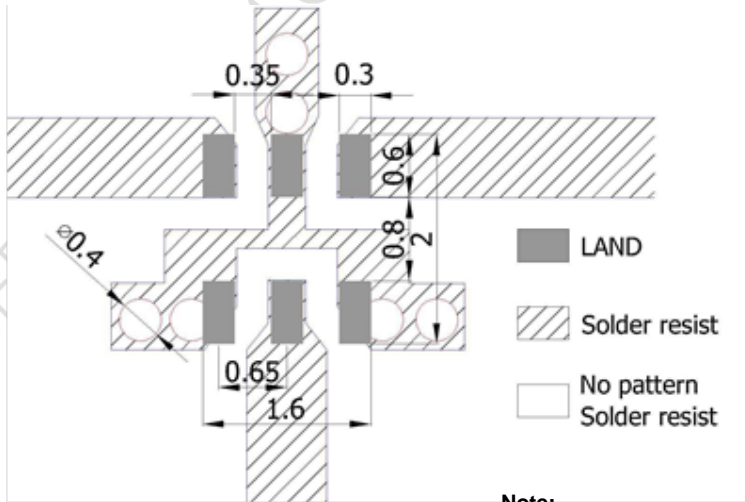
Symbol	Dimension (mm)
L	2.00 ± 0.15
W	1.25 ± 0.15
T	0.95 ± 0.10
A, E	0.20 ± 0.20
B	0.30 ± 0.20
C	0.35 ± 0.20
D	0.65 ± 0.20

TERMINAL CONFIGURATION



PIN	Connection	PIN	Connection
P1	GND	P4	5 GHz port
P2	Common port	P5	GND
P3	GND	P6	2.4 GHz port

PCB DESIGN/LAYOUT CONSIDERATION



Note:

- Unit in mm
- Design trace width to be 50Ω impedance.

Typical RF Performance

