

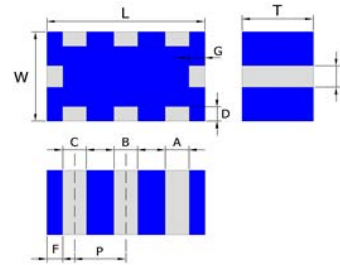
PRODUCT FEATURES

1. Surface mount low pass filter with a small size of 2.00 X 1.25 X 1.05 mm, RoHS compliant.
2. Provide low insertion loss and high rejection rate.
3. Highly stable under temperature and humidity changes.

RF CHARACTERISTICS

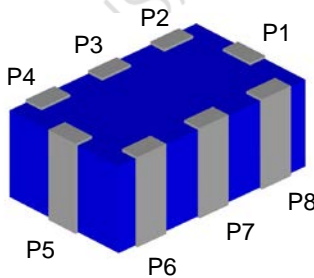
| P/N LP2500E0805AT | Specification |
|-----------------------------|--|
| Frequency range | 2400-2500 MHz |
| Insertion Loss (max) | 0.7 dB max |
| VSWR | 1.5 max |
| Impedance | 50 Ω |
| Attenuation (min.) | 30 dB @ 2 x ($f_0 \pm BW/2$) 25 dB @ 3 x ($f_0 \pm BW/2$) |
| Operating temperature range | -40°C to +85°C |

PHYSICAL DIMENSIONS



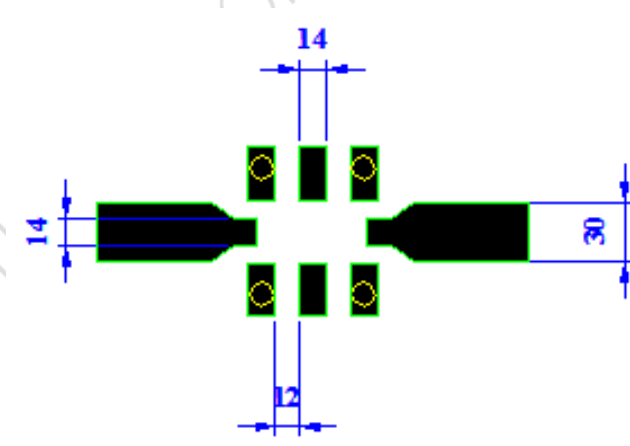
| Symbol | Dimension (mm) |
|---------|----------------|
| L | 2.00 ± 0.15 |
| W | 1.25 ± 0.10 |
| T | 1.05 ± 0.10 |
| A,B,C,E | 0.30 ± 0.10 |
| D | 0.25 ± 0.15 |
| F | 0.20 ± 0.10 |
| G | 0.25 ± 0.15 |
| P | 0.65 ± 0.10 |

TERMINAL CONFIGURATION



| PIN | Definition | PIN | Definition |
|-----|--------------|-----|--------------|
| P1 | Input/Output | P5 | Output/Input |
| P2 | GND | P6 | GND |
| P3 | GND | P7 | GND |
| P4 | GND | P8 | GND |

PCB DESIGN/LAYOUT CONSIDERATION



Note:

- Unit in mils
- Design trace width to be 50Ω impedance.



Typical RF Performance

