



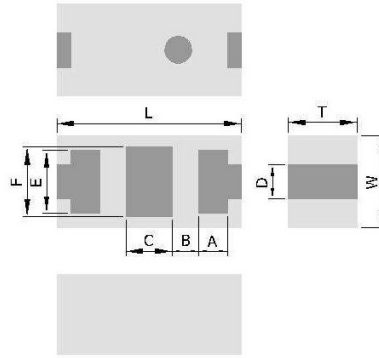
PRODUCT FEATURES

1. Surface mount band pass filter with a small size of 1.6 X 0.8 X 0.6 mm, RoHS compliant.
2. Provide low insertion loss, and high rejection rate.
3. Highly stable under temperature and humidity changes.

RF CHARACTERISTICS

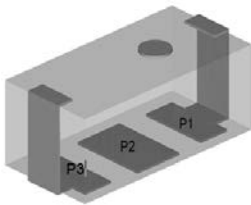
P/N BP2500H0603AT	Specification
Frequency range	2400 - 2500 MHz
Insertion Loss (max)	0.95 dB max. at +25°C 1.25 dB max. -40°C to +85°C
VSWR	2.0 max
Impedance	50 Ω
Attenuation (min.)	20 dB @ 500 - 960MHz 23 dB @ 3200 MHz 30 dB @ 4800 - 5000MHz 32 dB @ 7200 - 7500MHz
Operating temperature range	-40°C to +85°C

PHYSICAL DIMENSIONS



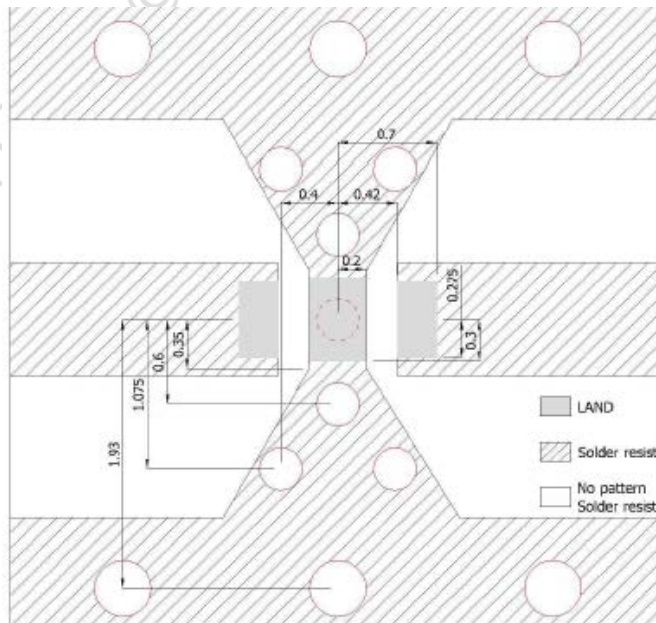
Symbol	Dimension (mm)
L	1.60 ± 0.15
W	0.80 ± 0.10
T	0.65 max
A	0.25 ± 0.10
B	0.23 ± 0.05
C	0.40 ± 0.10
D	0.30 ± 0.15
E	0.55 ± 0.10
F	0.60 ± 0.10

TERMINAL CONFIGURATION



PIN	Definition
P1	Input
P2	GND
P3	Output

PCB DESIGN/LAYOUT CONSIDERATION



Note:

- Unit in mm
- Design trace width to be 50Ω impedance.



Typical RF Performance

