



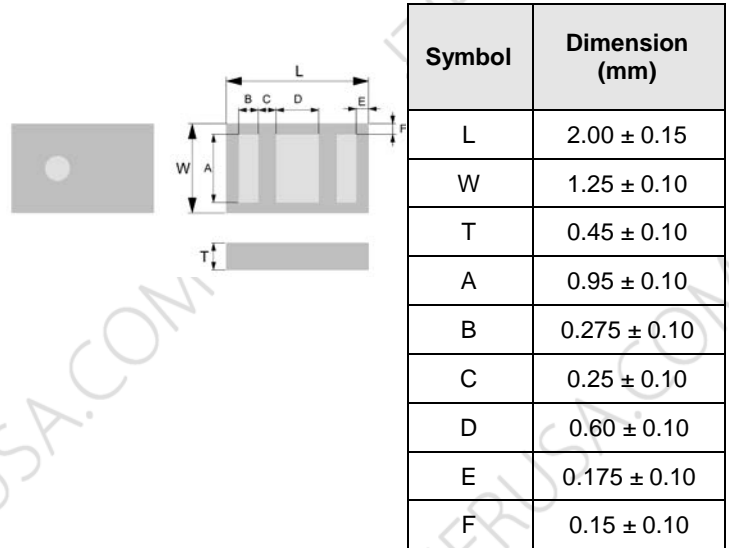
PRODUCT FEATURES

1. Surface mount band pass filter with a small size of 2.0 X 1.2 X 0.45 mm, RoHS compliant.
2. Provide low insertion loss and high rejection rate.
3. Highly stable under temperature and humidity changes.

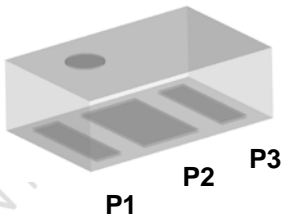
RF CHARACTERISTICS

P/N BP2500D0805GT	Specification
Frequency range	2400 - 2500 MHz
Insertion Loss (max)	2.0 dB max at +25°C 2.2 dB max at -40°C to +85°C
VSWR	2.0 max
Impedance	50 Ω
Attenuation (min.)	25@ 746-764MHz 30@ 824-849MHz 26@ 869-960MHz 28@ 1570-1580MHz 28@ 1710-1785MHz 30@ 1850-1910MHz 30@ 1930-1990MHz 25@ 2110-2170MHz 15@ 3300-3800MHz 35@ 4800-5000MHz 20@ 7200-7450MHz
Operating temperature range	-40°C to +85°C

PHYSICAL DIMENSIONS

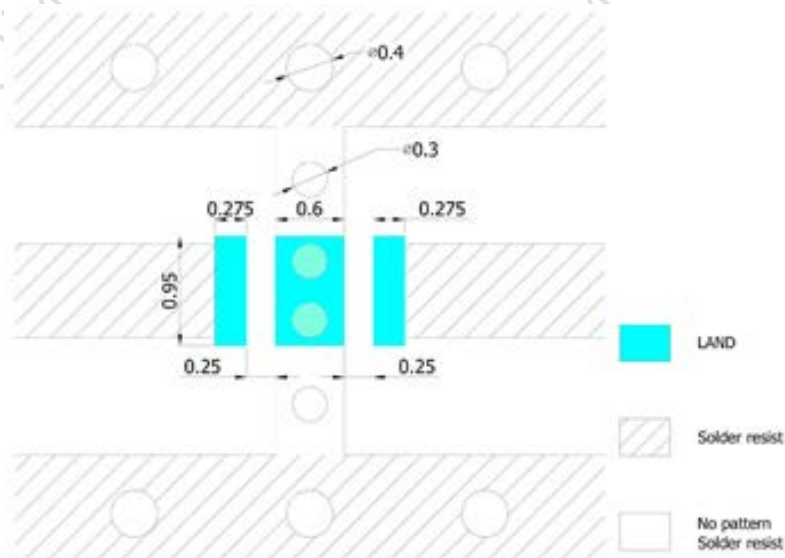


TERMINAL CONFIGURATION



PIN	Definition
P1	INPUT
P2	GND
P3	OUTPUT

PCB DESIGN/LAYOUT CONSIDERATION



Note:

- Unit in mm
- Design trace width to be 50Ω impedance.

Typical RF Performance

