

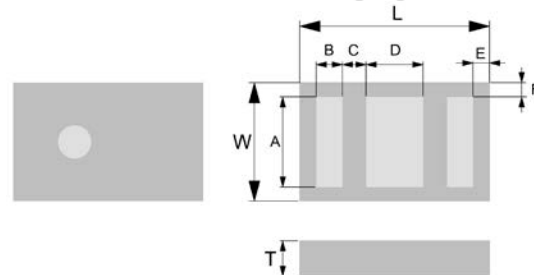
## PRODUCT FEATURES

1. Surface mount band pass filter with a small size of 2.0 X 1.2 X 0.8 mm, RoHS compliant.
2. Provide low insertion loss and high rejection rate.
3. Highly stable under temperature and humidity changes.

## RF CHARACTERISTICS

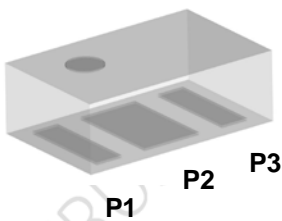
P/N BP2500D0805DT	Specification
Frequency range	2400 - 2500 MHz
Insertion Loss (max)	1.8 dB max at +25°C 2.0 dB max at -40°C to +85°C
VSWR	2.0 max
Impedance	50 Ω
Attenuation (min.)	30 dB @ 824-915MHz 30 dB @ 1545-1605MHz 35 dB @ 1710-1990MHz 30 dB @ 2170MHz 30 dB @ 4800-4967MHz 25 dB @ 5150- 6000MHz 20 dB @ 7200-7450.5MHz
Operating temperature range	-40°C to +85°C

## PHYSICAL DIMENSIONS



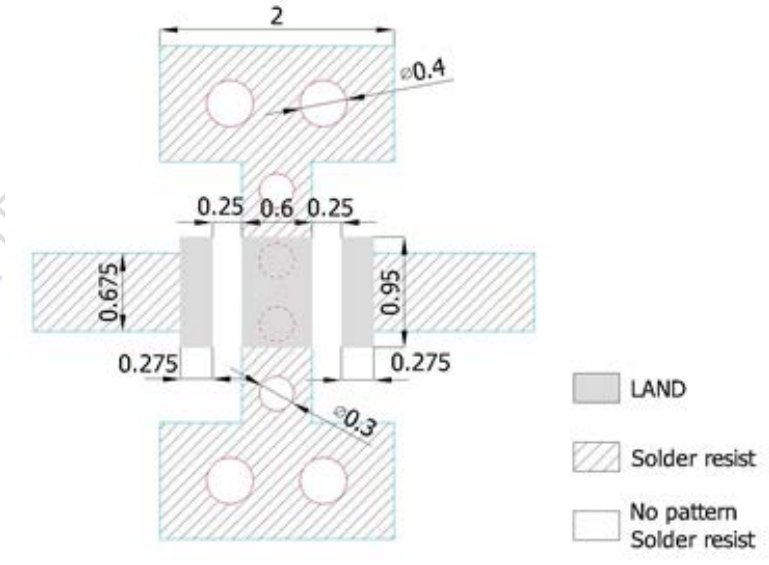
Symbol	Dimension (mm)
L	2.00 ± 0.15
W	1.25 ± 0.10
T	0.80 ± 0.10
A	0.95 ± 0.10
B	0.275 ± 0.10
C	0.25 ± 0.10
D	0.60 ± 0.10
E	0.175 ± 0.10
F	0.15 ± 0.10

## TERMINAL CONFIGURATION



PIN	Definition
P1	INPUT
P2	GND
P3	OUTPUT

**PCB DESIGN/LAYOUT CONSIDERATION**



- Note:**
- Unit in mm
  - Design trace width to be 50Ω impedance.

**Typical RF Performance**

