

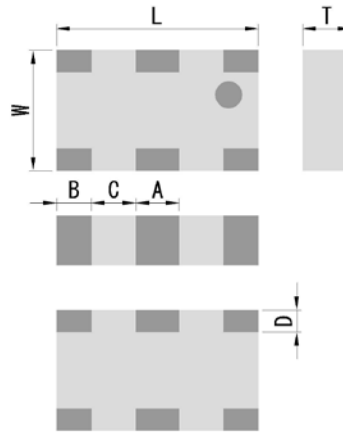
PRODUCT FEATURES

1. Surface mount band pass filter with a small size of 2.0 X 1.2 X 0.8 mm, RoHS compliant.
2. Provide low insertion loss and high rejection rate.
3. Highly stable under temperature and humidity changes.

RF CHARACTERISTICS

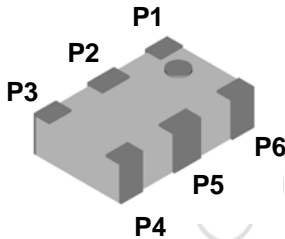
P/N BP2500C0805DT	Specification
Frequency range	2400 - 2500 MHz
Insertion Loss (max)	3.5 dB max
VSWR	2.0 max
Impedance	50 Ω
Attenuation (min.)	30 dB @ 880-960 MHz 30 dB @ 1710-1990 MHz 20 dB @ 2110-2170 MHz 30 dB @ 4800-5000 MHz 30 dB @ 7200-7500 MHz
Operating temperature range	-40°C to +85°C

PHYSICAL DIMENSIONS



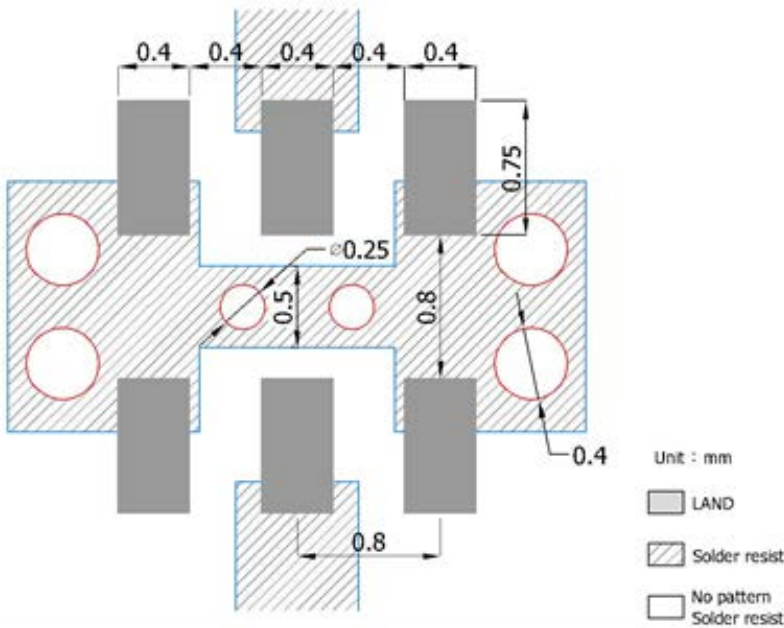
Symbol	Dimension (mm)
L	2.0 ± 0.2
W	1.2 ± 0.2
T	0.8 ± 0.1
A	0.4 ± 0.2
B	0.4 ± 0.2
C	0.4 ± 0.2
D	0.2 ± 0.1

TERMINAL CONFIGURATION



PIN	Definition	PIN	Definition
P1	GND	P4	GND
P2	INPUT	P5	OUTPUT
P3	GND	P6	GND

PCB DESIGN/LAYOUT CONSIDERATION



Note:

- Design trace width to be 50Ω impedance.

Typical RF Performance

