



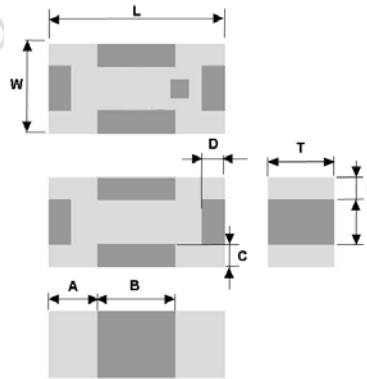
PRODUCT FEATURES

1. Surface mount band pass filter with a small size of 2.0 X 1.2 X 0.9 mm, RoHS compliant.
2. Provide low insertion loss and high rejection rate.
3. Highly stable under temperature and humidity changes.

RF CHARACTERISTICS

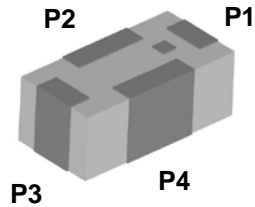
P/N BP2500B0805BT	Specification
Frequency range	2400 - 2500 MHz
Insertion Loss (max)	1.2 dB max.
VSWR	2.0 max
Impedance	50 Ω
Attenuation (min.)	20 dB @ 1600 MHz 25 dB @ 3200 MHz 20 dB @ 4800-5000 MHz
Operating temperature range	-40°C to +85°C

PHYSICAL DIMENSIONS



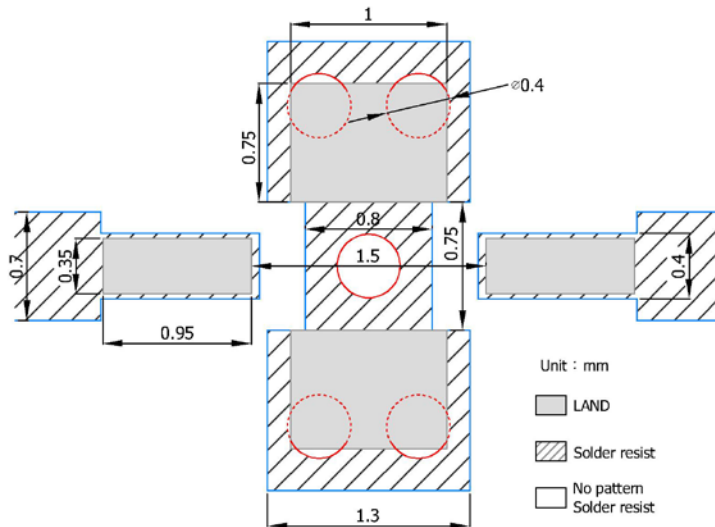
Symbol	Dimension (mm)
L	2.00 ± 0.15
W	1.20 ± 0.15
T	0.90 ± 0.10
A	0.45 ± 0.15
B	1.10 ± 0.15
C, D	0.25 ± 0.15
E	0.45 ± 0.15
F	0.30 ± 0.15

TERMINAL CONFIGURATION



PIN	Definition
P1	Input
P2	GND
P3	Output
P4	GND

PCB DESIGN/LAYOUT CONSIDERATION



Note:

- Design trace width to be 50Ω impedance.



Typical RF Performance

