



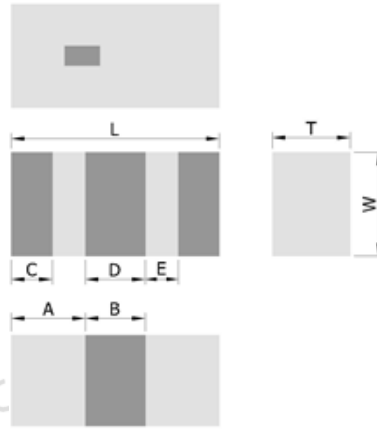
## PRODUCT FEATURES

1. Surface mount band pass filter with a small size of 1.6 X 0.8 X 0.6 mm, RoHS compliant.
2. Provide low insertion loss, low profile, and high rejection rate.
3. Highly stable under temperature and humidity changes.

## RF CHARACTERISTICS

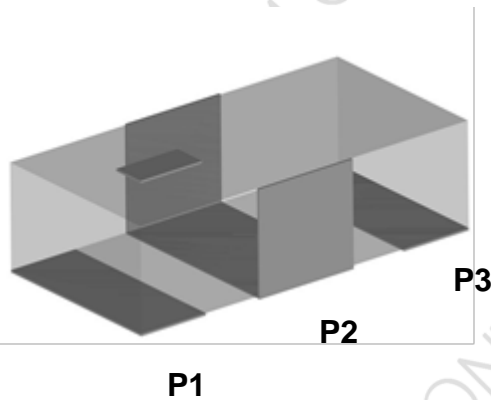
P/N BP2500F0603DT	Specification
Frequency range	2400 - 2500 MHz
Insertion Loss (max)	2.5 dB max. at +25°C 2.8 dB max. -40°C to +85°C
VSWR	2.0 max
Impedance	50 Ω
Attenuation (min.)	38 dB @ 880 - 915 MHz 40 dB @ 1710 - 1850 MHz 40 dB @ 1850 - 1910 MHz 35 dB @ 1920 - 1990 MHz 25 dB @ 2170 MHz 30 dB @ 4800 - 5000 MHz 20 dB @ 7200 - 7500 MHz
Operating temperature range	-40°C to +85°C

## PHYSICAL DIMENSIONS



Symbol	Dimension (mm)
L	1.60 ± 0.15
W	0.80 ± 0.15
T	0.60 ± 0.10
A	0.55 ± 0.15
B	0.50 ± 0.15
C	0.35 ± 0.15
D	0.50 ± 0.15
E	0.20 ± 0.15

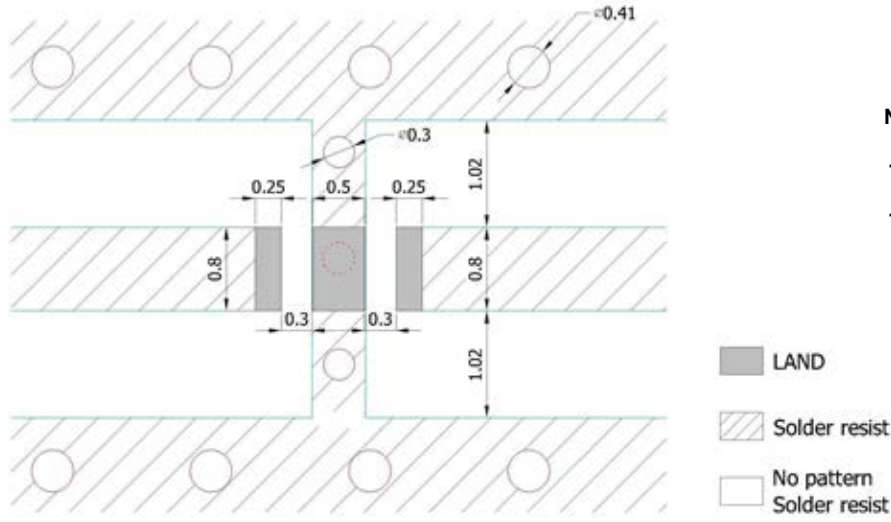
## TERMINAL CONFIGURATION



PIN	Definition
P1	INPUT
P2	GND
P3	OUTPUT



## PCB DESIGN/LAYOUT CONSIDERATION



Note:

Unit in mm

Design trace width to be 50Ω impedance.

## Typical RF Performance

