

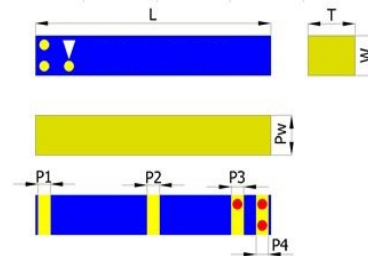
## PRODUCT FEATURES

1. Surface mount ceramic antenna with a small size of 19 X 3 X 3.8 mm.
2. GND clearance area not required.
3. Highly stable under temperature and humidity changes.
4. Superior performance in a compact size, RoHS compliant.

## RF CHARACTERISTICS

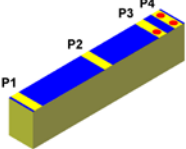
AT2450E7512BT	Specification
Working Frequency Range	2.4-2.5GHz
Gain	2.0 dBi(Typical)
Return Loss	-10 dB min
Polarization	Linear
Radiation Pattern	Omni-directional
Impedance	50Ω
Rated Power	1W max
Operating Temperature	-40°C to +85°C

## PHYSICAL DIMENSIONS



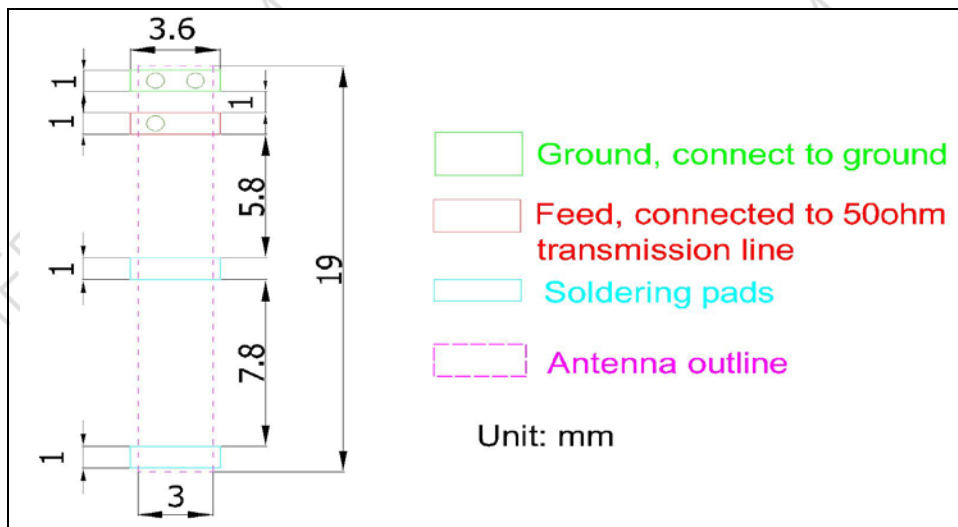
Symbol	Dimension (mm)
L	19.0 ± 0.15
W	3.0 ± 0.15
T	3.8 ± 0.20
P <sub>w</sub>	3.0 ± 0.10
P1 – P4	1.0 ± 0.10

## TERMINAL CONFIGURATION

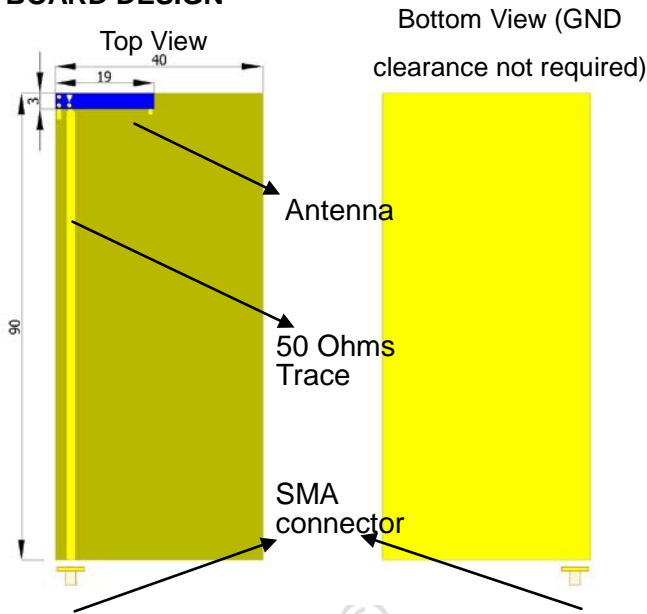


Pin	Definition
P1	Soldering
P2	Soldering
P3	Feed
P4	Ground

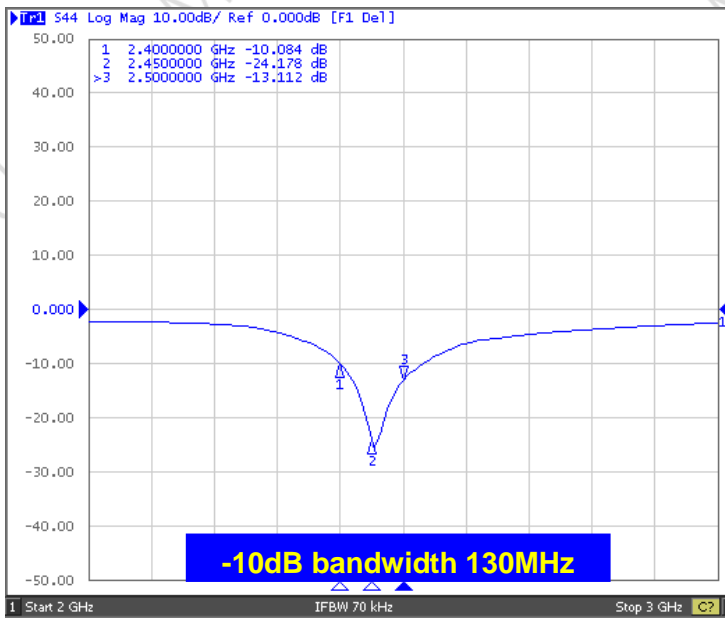
## PCB DESIGN/LAYOUT CONSIDERATION



## TEST BOARD DESIGN

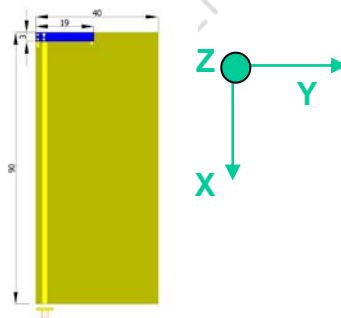


### Antenna S11



## RADIATION PATTERNS

The test board orientation is defined as:





# AT2450E7512BT ANTENNA SPECIFICATION

Rev. A

