

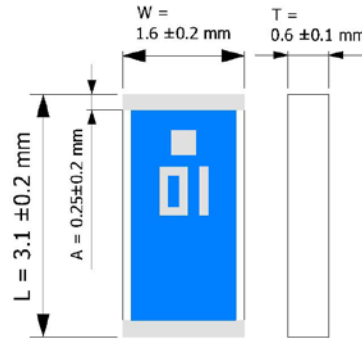
PRODUCT FEATURES

1. Surface mount ceramic antenna with a small size of 3.1 X 1.6 X 0.6 mm.
2. Highly stable under temperature and humidity changes.
3. Superior performance in a compact size, RoHS compliant.

RF CHARACTERISTICS

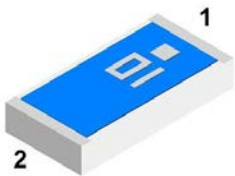
PN AT2450A1306DT	Specification
Working Frequency Range	2.4-2.48GHz
Gain	2.0 dBi(Typical)
VSWR	2.1 max
Polarization	Linear
Radiation Pattern	Omni-directional
Impedance	50Ω
Rated Power	1W max
Operating Temperature	-40°C to +85°C

PHYSICAL DIMENSIONS



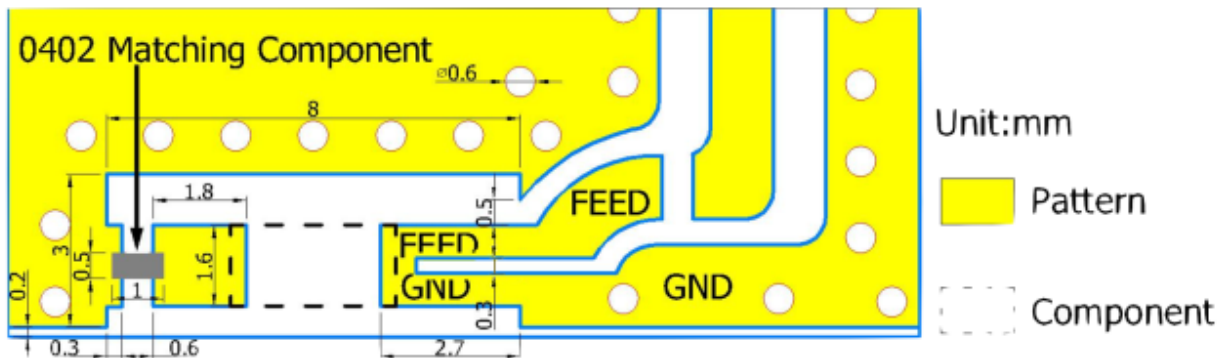
Symbol	Dimension (mm)
L	3.10 ± 0.20
W	1.60 ± 0.20
T	0.60 ± 0.10
A	0.25 ± 0.20

TERMINAL CONFIGURATION

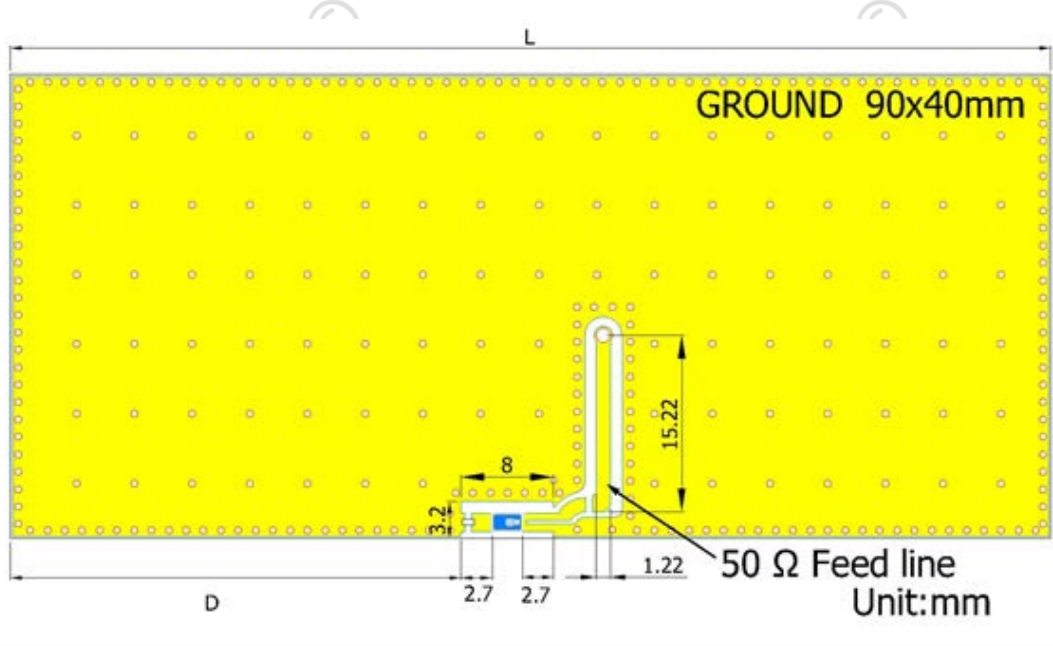


PIN	Connection
1	Feeding
2	Soldering terminal

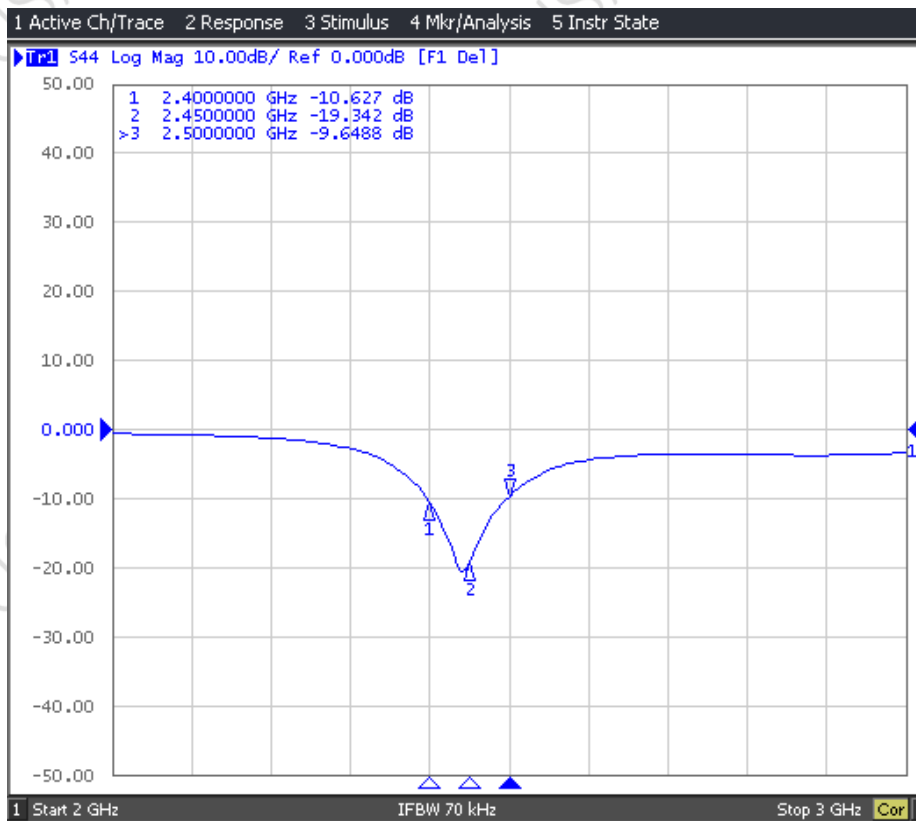
PCB DESIGN/LAYOUT CONSIDERATION



TEST BOARD DESIGN



Antenna S11 on Test Board



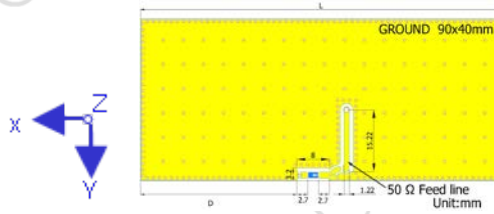


AT2450A1306DT ANTENNA SPECIFICATION

Rev. A

RADIATION PATTERNS

The test board orientation is defined as:



	Vertical	Horizontal
Y - Z Plane Average Gain = -1.511 dBi	<p>Peak Gain = -2.15 dBi Average Gain = -3.84 dBi</p>	<p>Peak Gain = -1.82 dBi Average Gain = -5.33 dBi</p>
X - Z Plane Average Gain = -0.571 dBi	<p>Peak Gain = 1.02 dBi Average Gain = -2.68 dBi</p>	<p>Peak Gain = 0.36 dBi Average Gain = -4.72 dBi</p>
X - Y Plane Average Gain = -1.166 dBi	<p>Peak Gain = -8.74 dBi Average Gain = -13.63 dBi</p>	<p>Peak Gain = 2.64 dBi Average Gain = -1.42 dBi</p>