

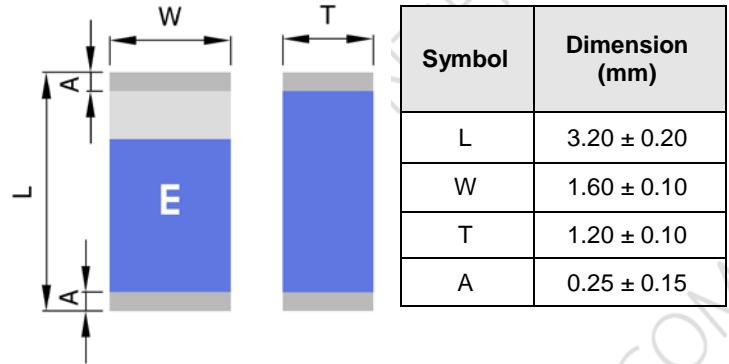
PRODUCT FEATURES

1. Surface mount ceramic antenna with a small size of 3.2 X 1.6 X 1.2 mm.
2. Highly stable under temperature and humidity changes.
3. Superior performance in a compact size, RoHS compliant.

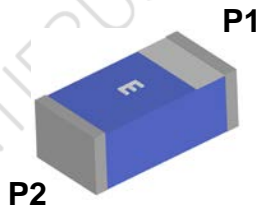
RF CHARACTERISTICS

PN AT2450A1306BT	Specification
Working Frequency Range	2.4-2.5GHz
Gain	2.0 dBi(Typical)
Return Loss	-10 dB min
Polarization	Linear
Radiation Pattern	Omni-directional
Impedance	50Ω
Rated Power	1W max
Operating Temperature	-40°C to +85°C

PHYSICAL DIMENSIONS

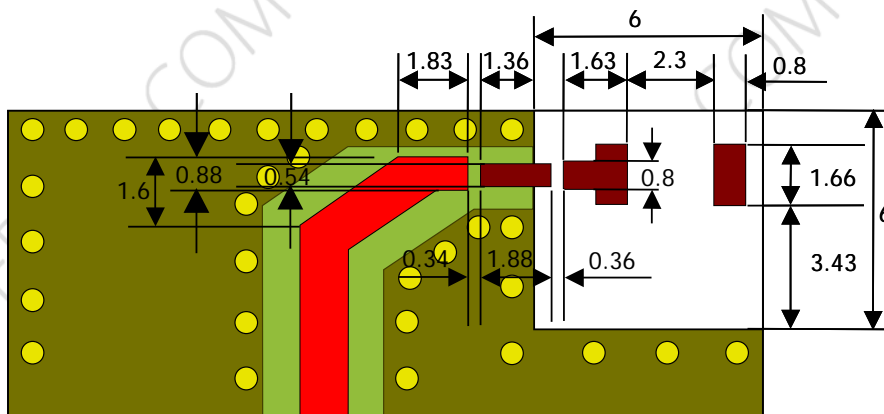


TERMINAL CONFIGURATION

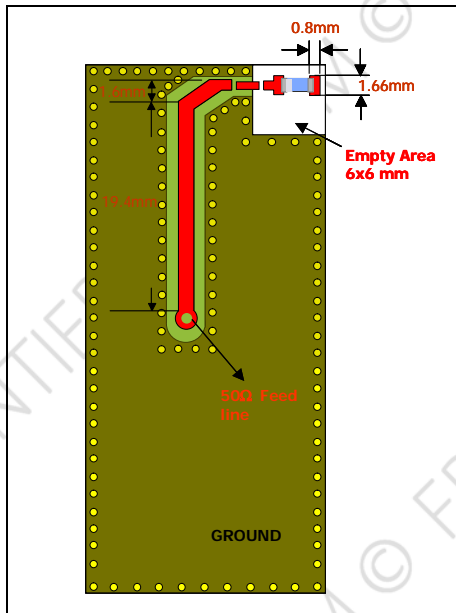


PIN	Connection
P1	Feeding
P2	Soldering terminal

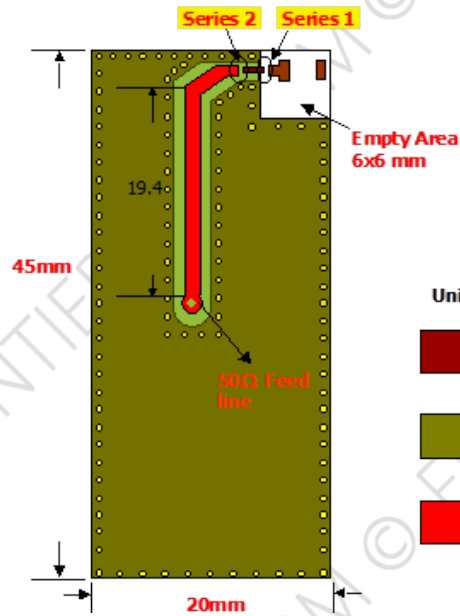
PCB DESIGN/LAYOUT CONSIDERATION






TEST BOARD DESIGN



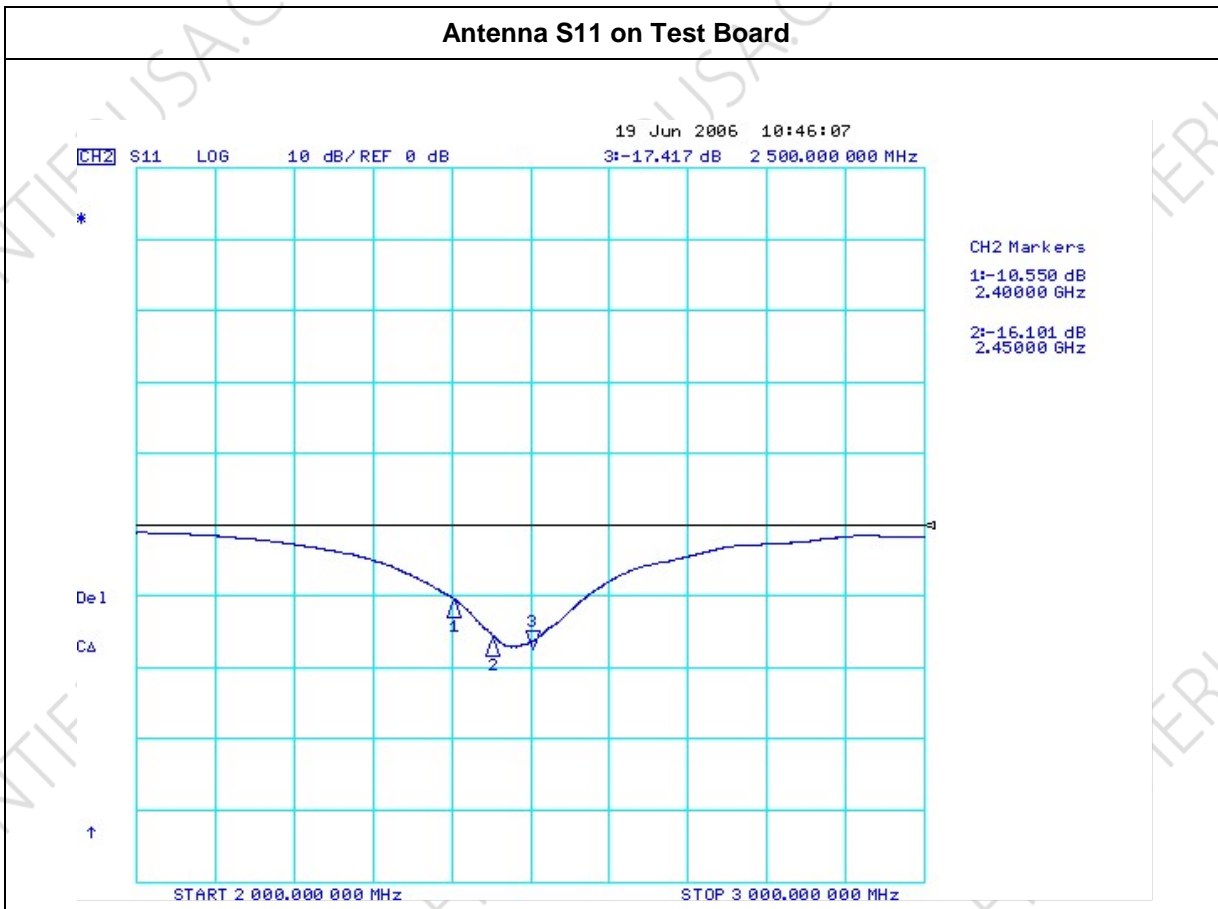
Series 1 = 3.9nH, Series 2 = 1.0nH



Unit : mm

-  Soldering Pad
-  Ground
-  50 Ω Transmission Line

Antenna S11 on Test Board



RADIATION PATTERNS

The test board orientation is defined as:

