

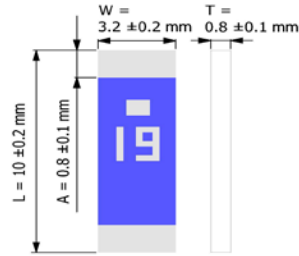
PRODUCT FEATURES

1. Surface mount ceramic antenna with a small size of 10.0 X 3.2 X 0.8 mm, RoHS compliant.
2. Provide better range than patch antenna.
3. Highly stable under temperature and humidity changes.
4. Superior performance in a compact size.

RF CHARACTERISTICS

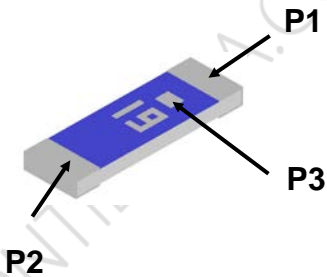
P/N AT1575A3913AT	Specification
Frequency Range	1.575GHz
Linear / RHCP Gain	3.0 dBi(Typical)/0 dBi
VSWR	2 max.
Polarization	Linear
Radiation Pattern	Omni-directional
Impedance	50Ω

PHYSICAL DIMENSIONS



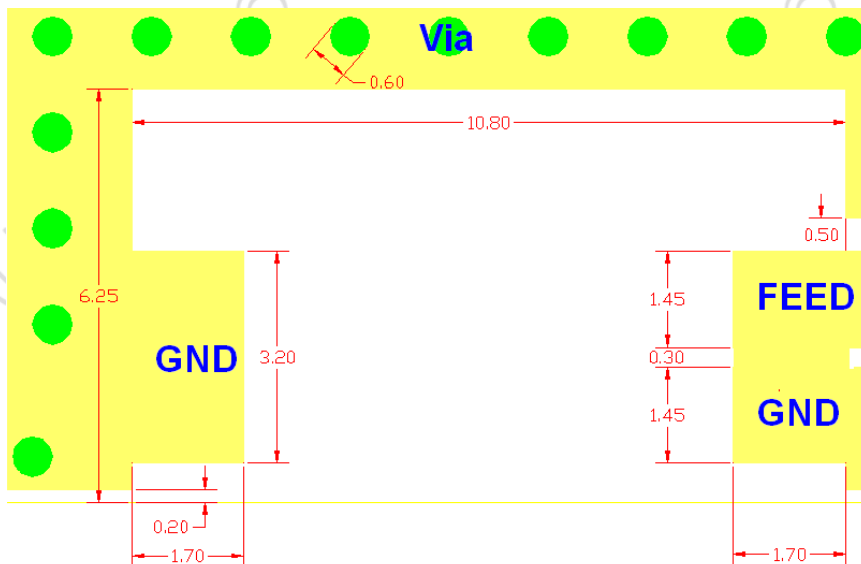
Symbol	Dimension (mm)
L	10.0 ± 0.20
W	3.20 ± 0.20
T	0.80 ± 0.10
A	0.80 ± 0.10

TERMINAL CONFIGURATION

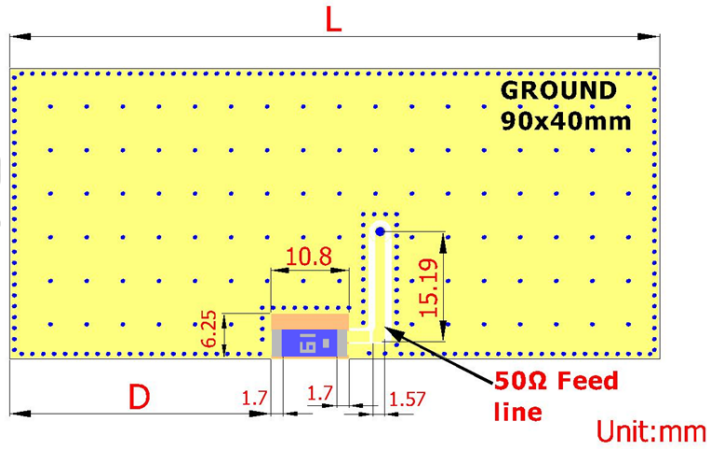


PIN	Connection
P1	Feeding
P2	Soldering terminal
P3	Identification mark

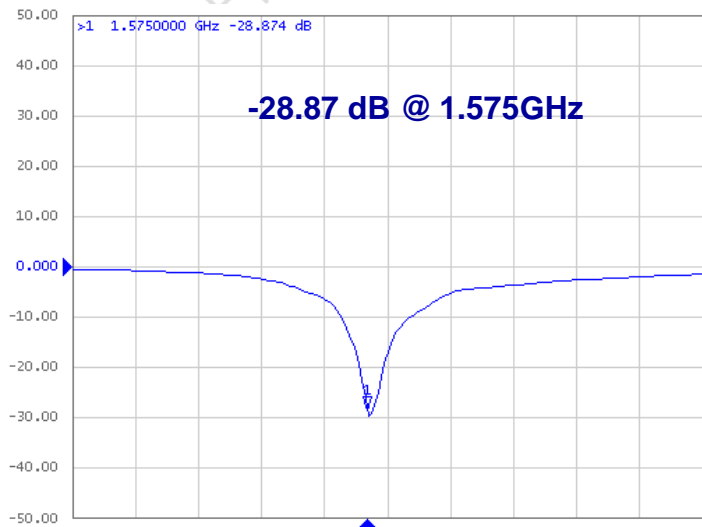
PCB DESIGN/LAYOUT CONSIDERATION



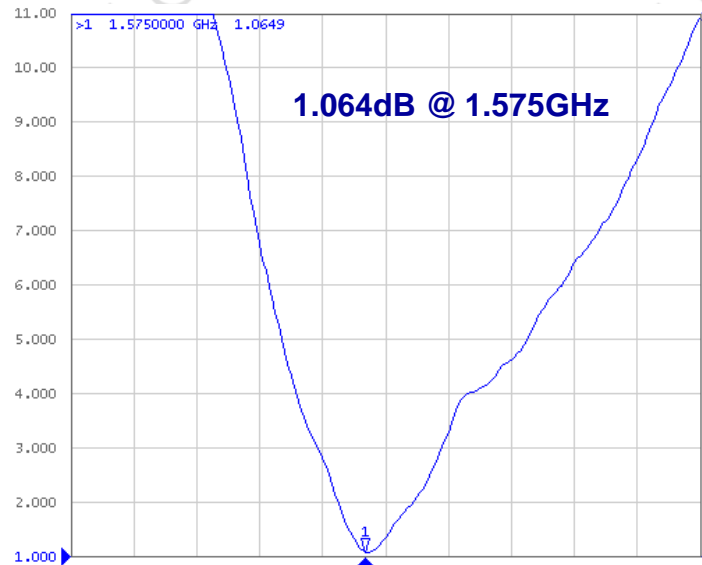
TEST BOARD DESIGN



Antenna S11 on Test Board

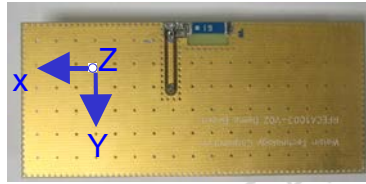


Antenna VSWR on Test Board



RADIATION PATTERNS

The antenna orientation of the test board is defined as follow:



	Vertical	Horizontal
Y - Z Plane Average Gain= 2.201dBi	<p>Peak Gain = 4.14 dBi Average Gain = 2.12 dBi</p>	<p>Peak Gain= -10.10 dBi Average Gain= -15.15 dBi</p>
X - Z Plane Average Gain= -0.562 dBi	<p>Peak Gain= -7.42 dBi Average Gain= -11.35 dBi</p>	<p>Peak Gain= 3.26 dBi Average Gain= -0.94 dBi</p>
X - Y Plane Average Gain= -0.053 dBi	<p>Peak Gain= -9.26 dBi Average Gain= -11.85 dBi</p>	<p>Peak Gain= 3.39 dBi Average Gain= -0.35 dBi</p>