

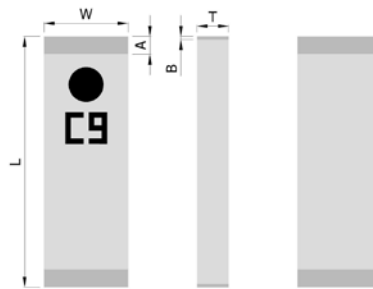
PRODUCT FEATURES

1. Surface mount ceramic antenna with a small size of 12.0 X 4.0 X 1.5 mm.
2. Highly stable under temperature and humidity changes.
3. Superior performance in a compact size, RoHS compliant.

RF CHARACTERISTICS

PN AT0433A4716AT	Specification
Working Frequency Range	428-437MHz
Gain	-3.3dBi(Typical)
VSWR	3.0 max
Polarization	Linear
Radiation Pattern	Omni-directional
Impedance	50Ω
Rated Power	1W
Operating Temperature	-40°C to +125°C

PHYSICAL DIMENSIONS



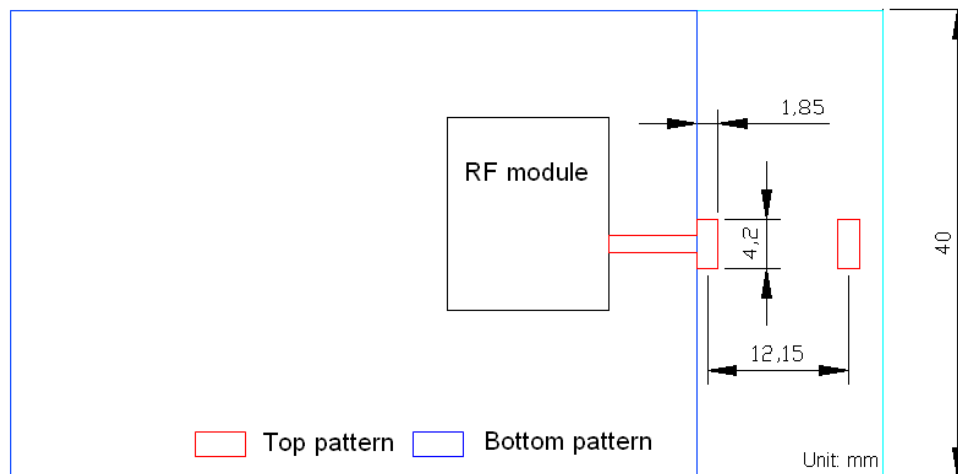
Symbol	Dimension (mm)
L	12.00 ± 0.25
W	4.00 ± 0.25
T	1.5 ± 0.15
A	0.85 ± 0.15

TERMINAL CONFIGURATION

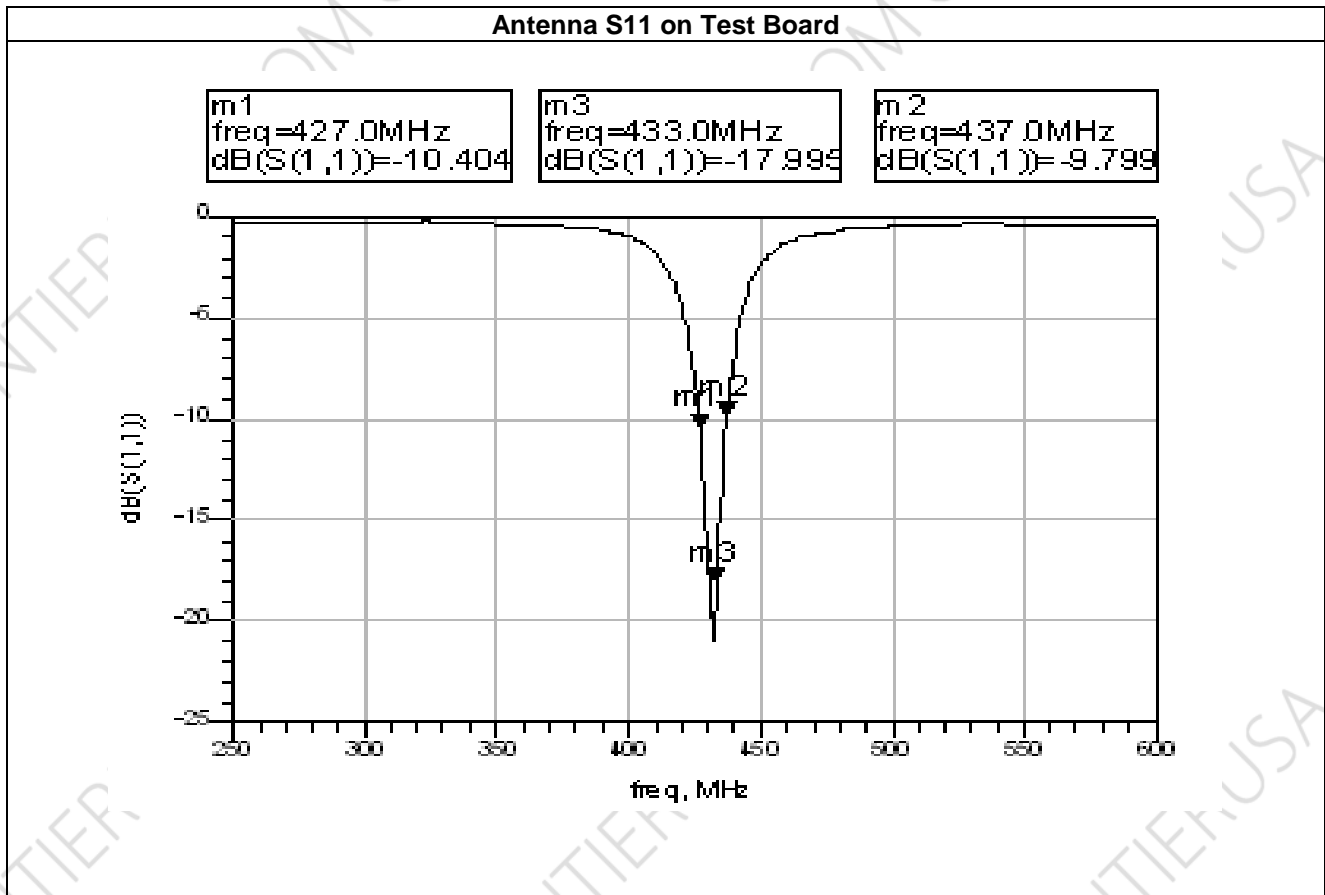
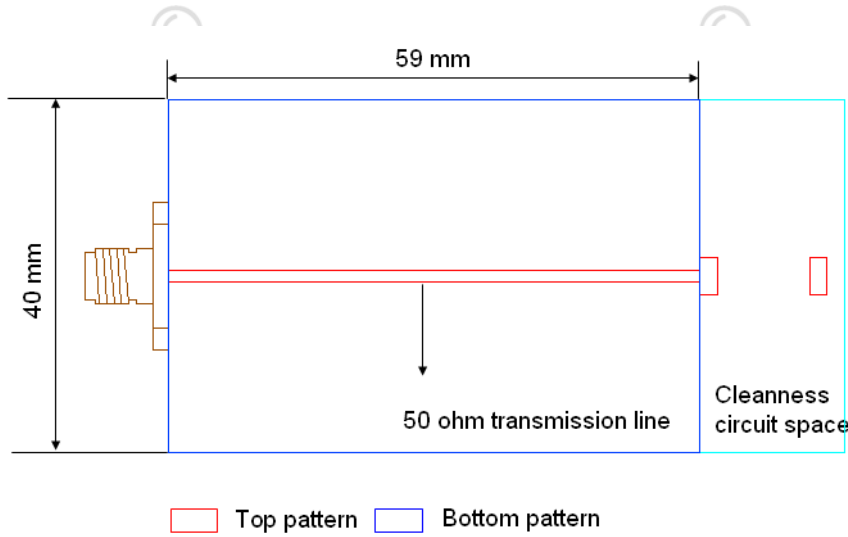


PIN	Connection
P1	Feeding
P2	Soldering terminal

PCB DESIGN/LAYOUT CONSIDERATION

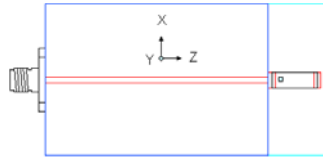


TEST BOARD DESIGN

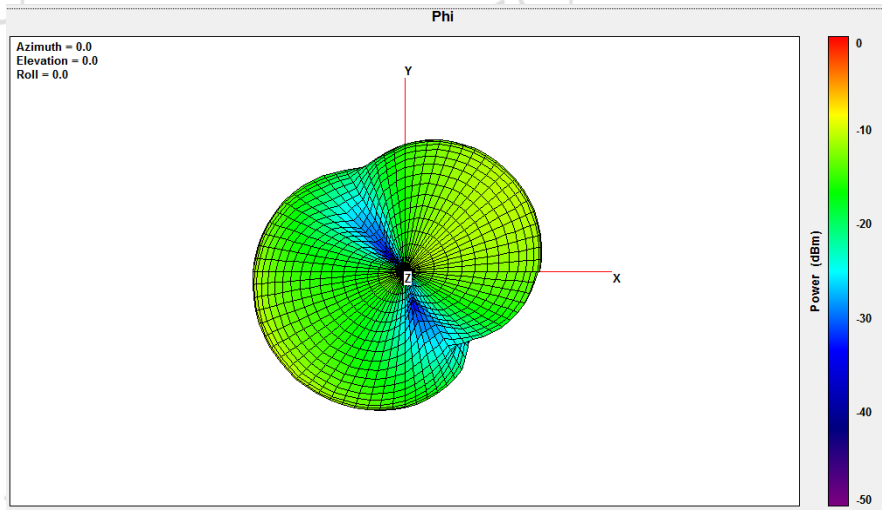


RADIATION PATTERNS

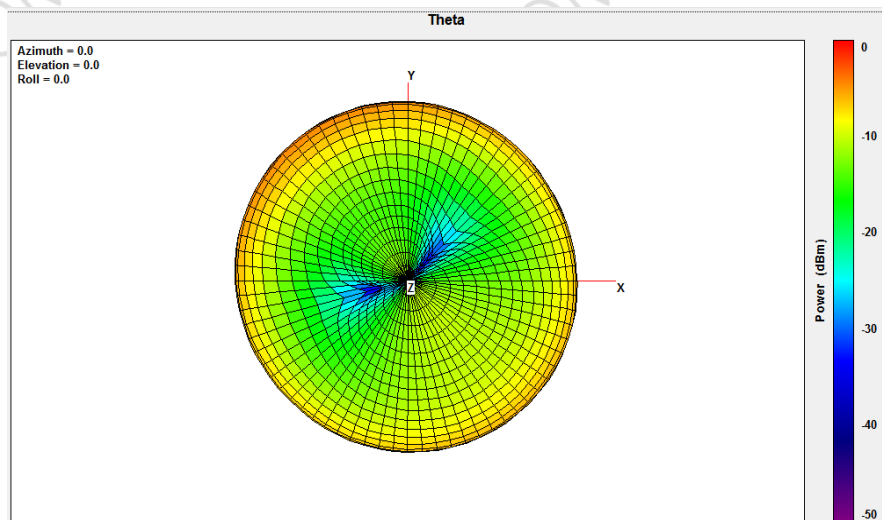
The test board orientation is defined as:



Phi



Theta



Total

