



# StoragePeak 1000 Central Management System

Monitor and Optimize OCZ Flash Solutions from One Location

## StoragePEAK1000

Flash Management

### Product Overview

OCZ's StoragePeak 1000 is an SSD management application that centrally monitors and manages all OCZ enterprise drives connected to network servers, storage arrays or appliances. It securely connects to multiple host systems across the network enabling IT managers to centrally monitor and administer their enterprise flash resources while providing a cross-platform view through the use of a web-based GUI interface for the utmost in centralized management, monitoring, maintenance and reporting. IT managers are afforded specific drive details on performance, reliability and operation, and along with the monitoring functionality, a user configurable alert systems is provided that identifies any potential system and/or storage issues in advance enabling corrective actions to be initiated at an early stage.

### Key Features

- Centralized Maintenance
- Centralized Management
- User-Friendly Interface
- Customizable Alerts
- Remote Access to Multiple Hosts
- Simple Discovery of Hosts

### Products Supported

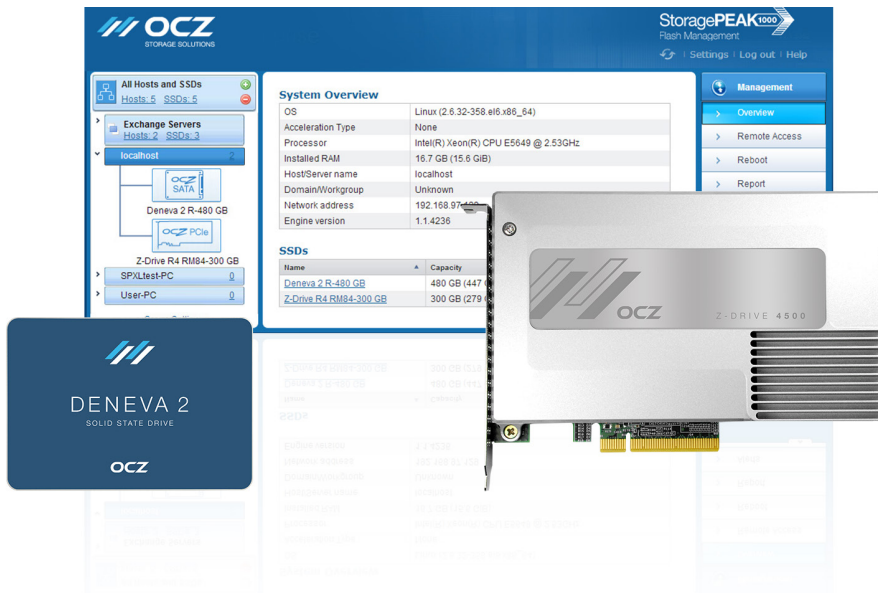
- Z-Drive 4500 PCIe SSD Series
- Intrepid 3000 SATA SSD Series
- ZD-XL SQL Accelerator (PCIe)
- Z-Drive R4 PCIe SSD Series
- Deneva 2 SATA SSD Series
- Talos 2 SAS SSD Series

### Operating Systems

- CentOS 6.0 - 6.5 (64-bit)
- RHEL 6.0 - 6.5 (64-bit)
- Windows 7 and 8.1 (32/64-bits)
- Windows Server 2008 R2, 2012 and 2012 R2 (64-bit)

### Browsers Supported

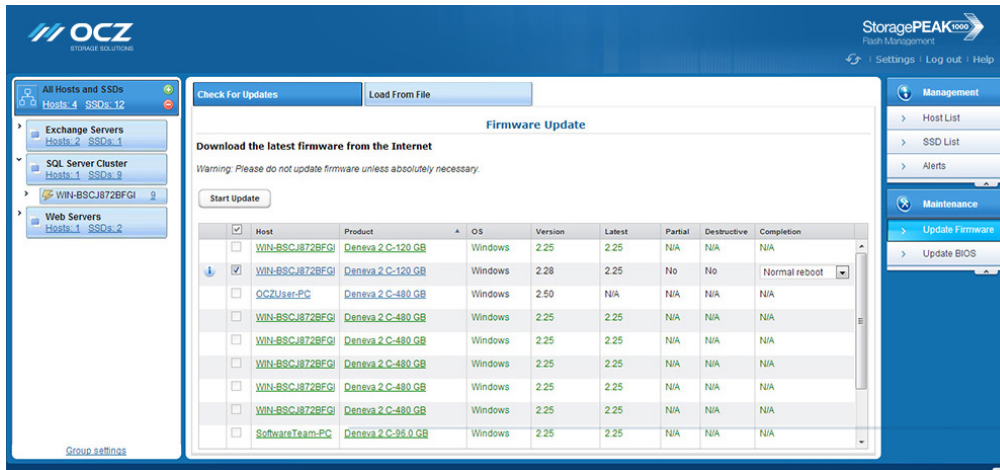
- Firefox® 21 or higher
- Google Chrome™ 27 or higher
- Internet Explorer® 9 or higher





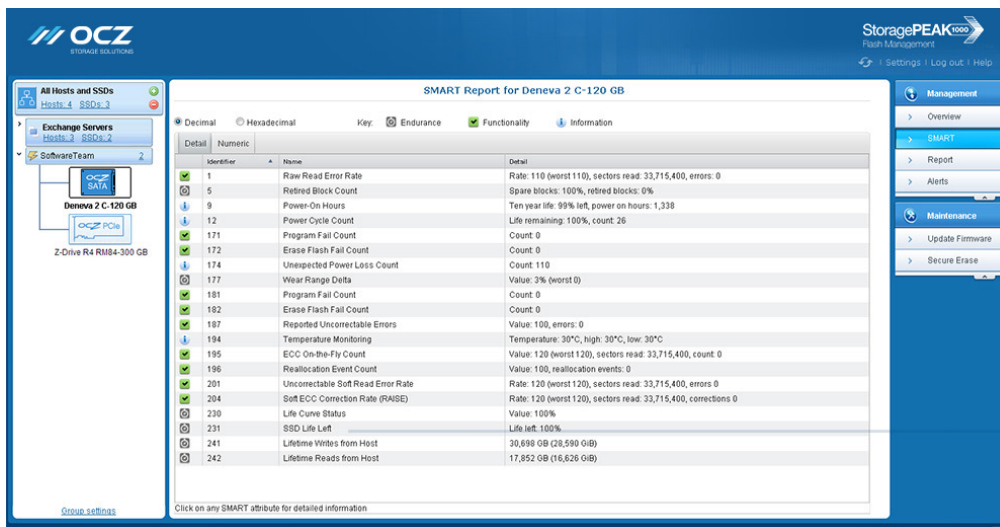
## Centralized Maintenance

Remote maintenance of OCZ SSDs allows users to perform mission-critical actions such as firmware updates, BIOS updates, and secure erase, as well as viewing an audit trail of the SSDs and their hosts.



## Centralized Management

Within StoragePeak 1000, the user can view and save reports. These reports detail the remaining life, performance, and alerts of a specific SSD, along with a SMART data snapshot.



## User-Friendly Interface

With an easy and intuitive user interface, StoragePeak 1000 displays an organized view of hosts and the flash resources in the network, providing a simple and easy way to manage and maintain OCZ enterprise solid state drives. Likewise, system management can also be done through the StoragePeak 1000 command line interface. Its robust set of command scripts allows for comprehensive control of OCZ SSDs and their hosts.

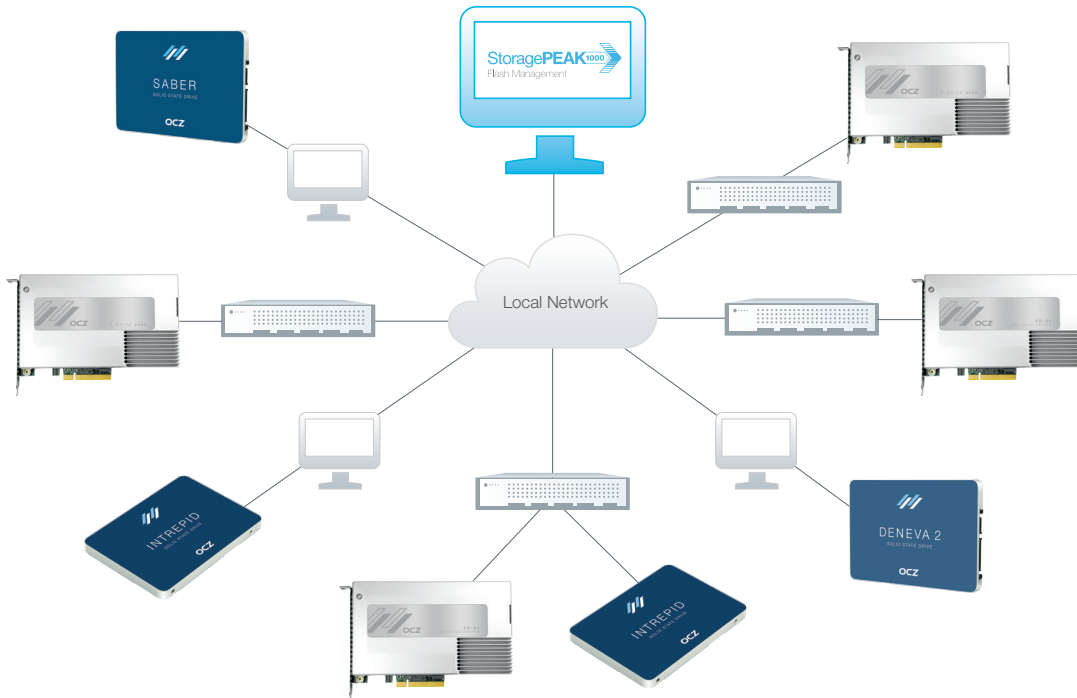
## Customizable Alerts

StoragePeak 1000 allows system administrators to set custom alert thresholds for critical, warning, and informational alert types. This will help the system administrator foresee business-critical concerns that may lead to downtime or loss of data.



## Remote Access to Multiple Hosts

StoragePeak 1000 simplifies network administration by allowing the user to connect to multiple hosts across their network. This centralizes OCZ solid state drives and their hosts to a single location, bringing ease to routine maintenance and management.



## Simple Discovery of Hosts

StoragePeak 1000 automatically discovers hosts providing a complete inventory and enabling quick access to individual SSDs. The user can also manually add hosts to the StoragePeak 1000, granting more control to the system administrator.

**Host Snapshot Report**

Report for SoftwareTeam  
Date: Thu Sep 19 12:57:35 PDT 2013

**System Overview**

OS	Windows 7 Ultimate Edition, Service Pack 1, 64-bit		
Installed RAM	17.1 GB (15.9 GiB)		
HostServer name	SoftwareTeam		
Domain/Workgroup	OCZ		
Network address	192.168.97.105		
Engine version	1.1.5480		

**SSDs Overview**

Name	Capacity	Firmware	Life Left
Deneva 2 C-96.0 GB	96.0 GB (89.4 GiB)	2.25	100 %
Deneva 2 C-120 GB	120 GB (112 GiB)	2.25	100 %

**Device Details**

Name	Deneva 2 C-96.0 GB
HostServer name	SoftwareTeam
Device Type	D2C8TK251A10-0120 SATA
Unique ID	D2C8TK251A10-0120-OCZ-957JE5E0MD0L3216
Interface	SATA
Serial number	OCZ-957JE5E0MD0L3216

OCZ may make changes to specifications and product descriptions at any time, without notice