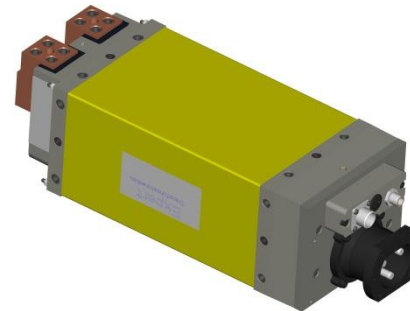
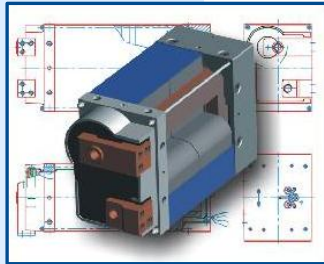


Zangentransformator | Reihe K *Gun transformer | Series K*

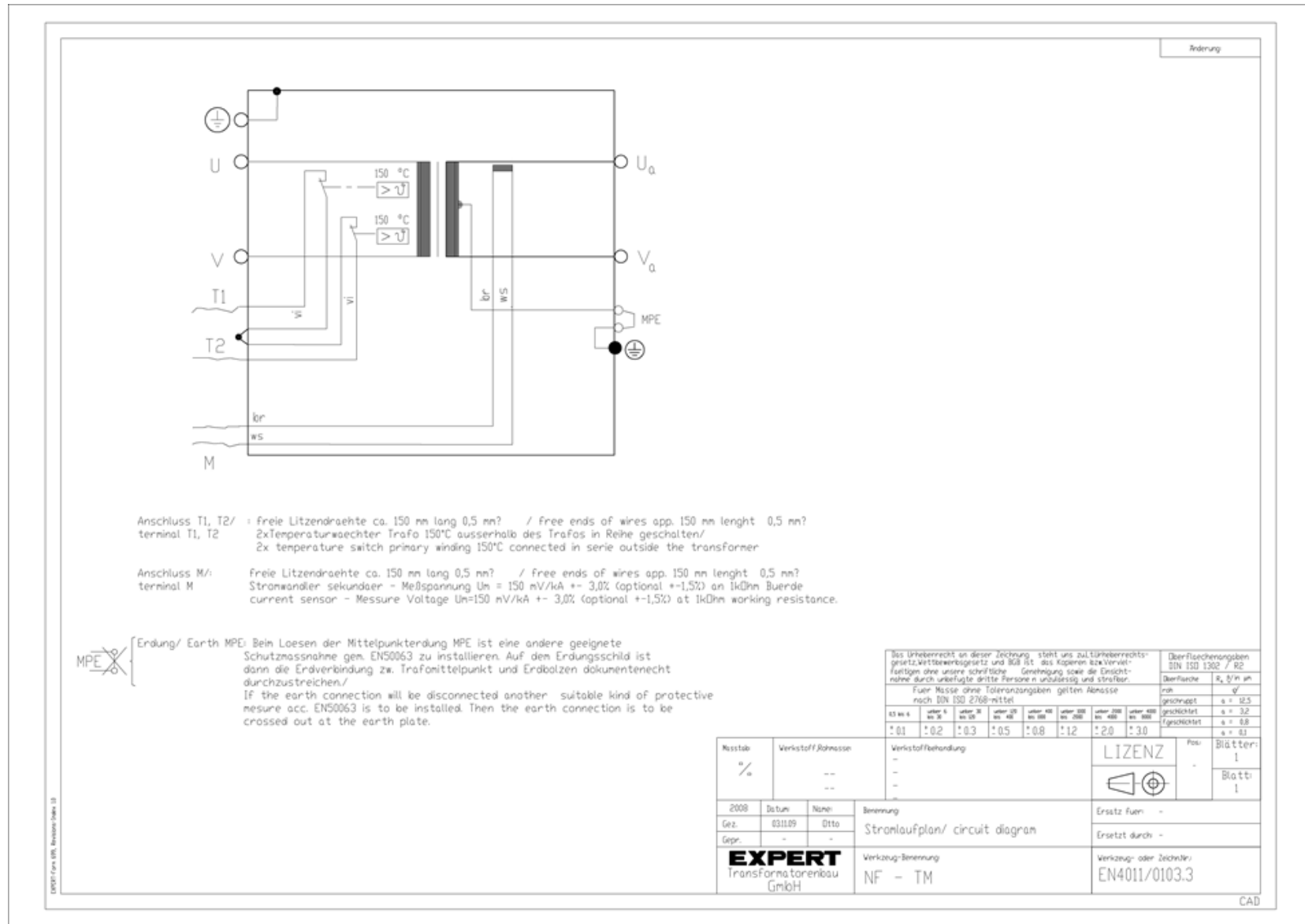
- Integrierte Temperaturüberwachung (T)
Integrated thermal switches (T)
- Strommessspule (M)
current sensing coil (M)



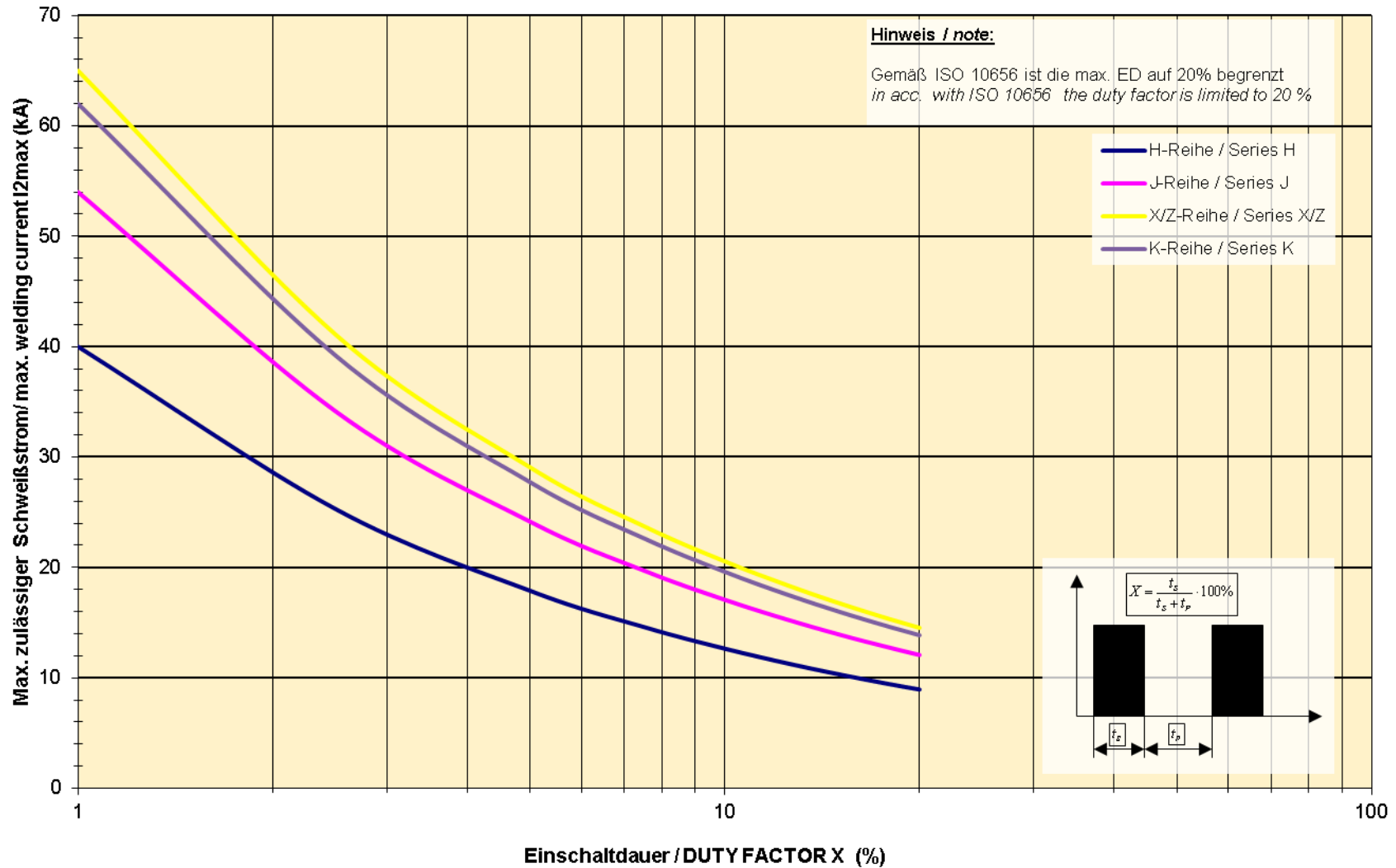
Zangentransformator | Reihe K*
Gun transformer | Series K*

TYP / TYPE				K-6,3-6,5-400-TM	K-7,1-6,5-400-TM	K-8,0-6,5-400-TM	K-10,0-6,4-400-TM	K-13,5-6,5-400-TM
Nennspannung / nominal voltage		V		400 (andere Spannungen auf Anfrage, other voltages on request)				
Frequenz / frequency		Hz		50 (60 Hz auf Anfrage, on request)				
S ₂₀ (Mittl. Bauleistg. 20% ED) / nominal power at 20%d.f.		kVA		91,6	102,7	115,3	145,4	195,9
S ₅₀ (Mittl. Bauleistg. 50% ED) / nominal power at 50%d.f.		kVA		58	65	73	92	124
S ₁₀₀ (Mittl. Bauleistg. 100% ED) / nominal power at 100%d.f.		kVA		41	46	52	65	88
U ₂₀ (Sekundär-Leerlaufspannung) / secondary no-load voltage		V		6,3	7,1	8,0	10,0	13,5
I _{1P} (Primärdauerstrom) / prim. constant current		A		102	115	130	163	217
I _d (Dauerstrom) / permanent current		A		6.500				
Übersetzungsverhältnis / turns ratio		N ₁ / N ₂		64	56	50	40	30
Transformatorimpedanz, sekundärseitig Z = R + j X Transformer impedance, secondary side Z = R + jX		μΩ		~ 125 = 106 + j 66	~ 130 = 113 + j 64	~ 137 = 122 + j 62	~ 155 = 136 + j 74	~ 200 = 174 + j 99
Masse / weight		kg		~ 28	~ 29	~ 32	~ 39	~ 52
Farbe / color				RAL 5015 Blau	RAL 6001 Grün	RAL 7005 Grau	RAL 1004 Gelb	RAL 8001 Braun
Stromessspule / current sensing coil				150 mV / kA ± 3%				
Temperaturwächter / temperature switch				2 x 140 °C, Bimetallschalter (Öffner) / bimetal (opener)				
Schutzart / protection class				Transformator IP 65, Primär- u. Sekundäranschlüsse IP 00 transformer IP 65, primary and secondary terminals IP 00				
Isolationsklasse / insulation class				F (155 °C)				
Elektrische Anschlüsse / Electrical connections	Primär / primary	Gewinde / thread Ø	mm	M6/ Stecksystem/ plug system MC 135 M8 / Stecksystem / plug system MC 180 (optional)			M8 / MC180	M10 / MC 250
		Tiefe / depth	mm	8 (10 optional)			10	12
	Sekundär / secondary	Gewinde / thread Ø	mm	4 x M8				
		Tiefe / depth	mm	15				
Kühlwassermenge Q (max. 30°C) / cooling water quantity		l / min		≥ 4,0				
Druckdifferenz Δp (bei Q = 4 l / min) / pressure drop		bar		≤ 0,6				

Zangentransformator | Reihe K* Gun transformer | Series K*



Belastungsdiagramm $I_{2max} = f(X)$
 Load diagram $I_{2max} = f(X)$



Ausgangskennlinie - Reihe K
Output characteristic - Series K

