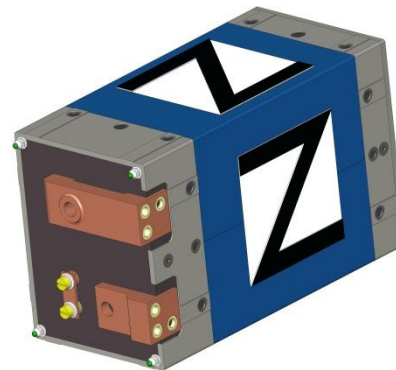
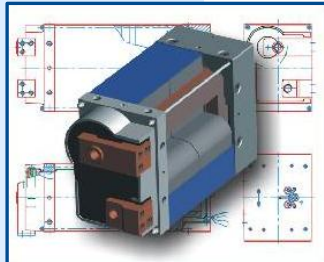


CNOMO E34.73.460.N Zangentransformator | Reihe Z
CNOMO E34.73.460.N gun transformer | Series Z

- Integrierte Temperaturüberwachung (T)
Integrated thermal switches (T)
- Strommessspule (M)
current sensing coil (M)

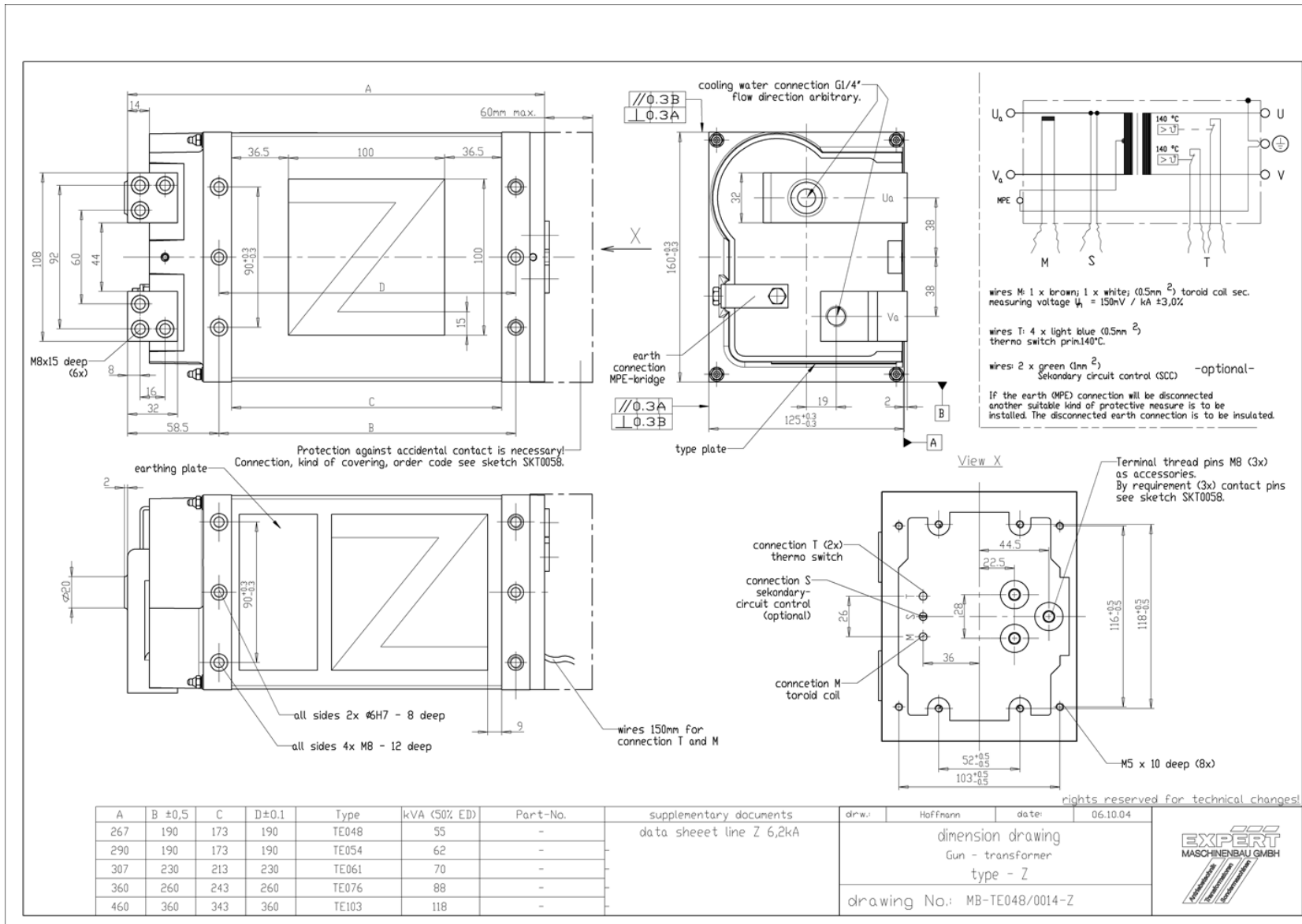


CNOMO E34.73.460.N Zangentransformator | Reihe Z*
CNOMO E34.73.460.N gun transformer | Series Z*

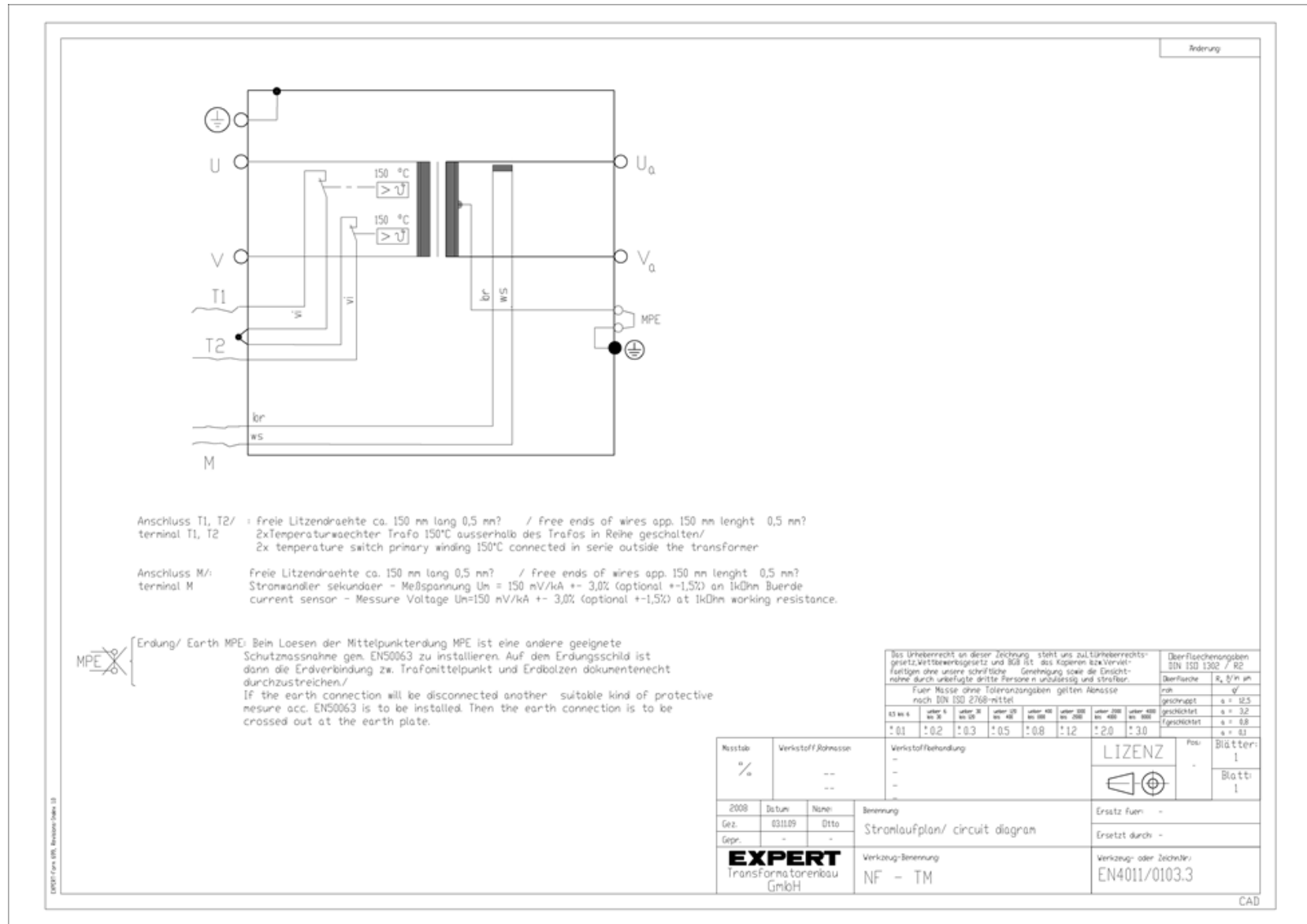


TYP / TYPE		Z-6,3-6,2-400-TM	Z-7,1-6,2-400-TM	Z-8,0-6,2-400-TM	Z-10,0-6,2-400-TM	Z-13,5-6,2-400-TM
Nennspannung / nominal voltage	V	400 (andere Spannungen auf Anfrage, other voltages on request)				
Frequenz / frequency	Hz	50 (60 Hz auf Anfrage, on request)				
S ₂₀ (Mittl. Bauleistg. 20% ED) / nominal power at 20%d.f.	kVA	87,2	98,4	110,8	138,6	186,4
S ₅₀ (Mittl. Bauleistg. 50% ED) / nominal power at 50%d.f.	kVA	55,2	62,3	70,1	87,7	118,0
S ₁₀₀ (Mittl. Bauleistg. 100% ED) / nominal power at 100%d.f.	kVA	39,1	44,0	49,6	62	83,7
U ₂₀ (Sekundär-Leerlaufspannung) / secondary no-load voltage	V	6,3	7,1	8,0	10,0	13,5
I _{1P} (Primärdauerstrom) / prim. constant current	A	98	110	124	155	209
I _d (Dauergleichstrom) / permanent DC current	A	6.200				
Übersetzungsverhältnis / turns ratio	N ₁ / N ₂	64	56	50	40	30
Transformatorimpedanz, sekundärseitig Z = R + j X Transformer impedance, secondary side Z = R + jX	μΩ	129 = 117 + j 54	138 = 121 + j 66	141 = 128 + j 59	163 = 146 + j 72	207 = 185 + j 93
Masse / weight	kg	26,5	29,0	32,0	39	51,5
Farbe / color		RAL 5015 Blue	RAL 6001 Green	RAL 7005 Grey	RAL 1004 Yellow	RAL 8001 Braun
Stromessspule / current sensing coil		150 mV / kA ± 3%				
Temperaturwächter / temperature switch		2 x 140 °C, Bimetallschalter (Öffner) / bimetal (opener)				
Schutzart / protection class		Transformator IP 65, Primär- u. Sekundäranschlüsse IP 00 transformer IP 65, primary and secondary terminals IP 00				
Isolationsklasse / insulation class		F (155 °C)				
Elektrische Anschlüsse / Electrical connections	Primär / primary	Gewinde / thread Ø	mm	M8 / Stecksystem MC 180, max. 150 A M8 / Plug system MC 180, max. 150 A		
		Tiefe / depth	mm	10		
	Sekundär / secondary	Gewinde / thread Ø	mm	3 x M8		
		Tiefe / depth	mm	15		
Kühlwassermenge Q (max. 30°C) / cooling water quantity	l / min	≥ 4,0				
Druckdifferenz Δp (bei Q = 4 l / min) / pressure drop	bar	≤ 0,6				

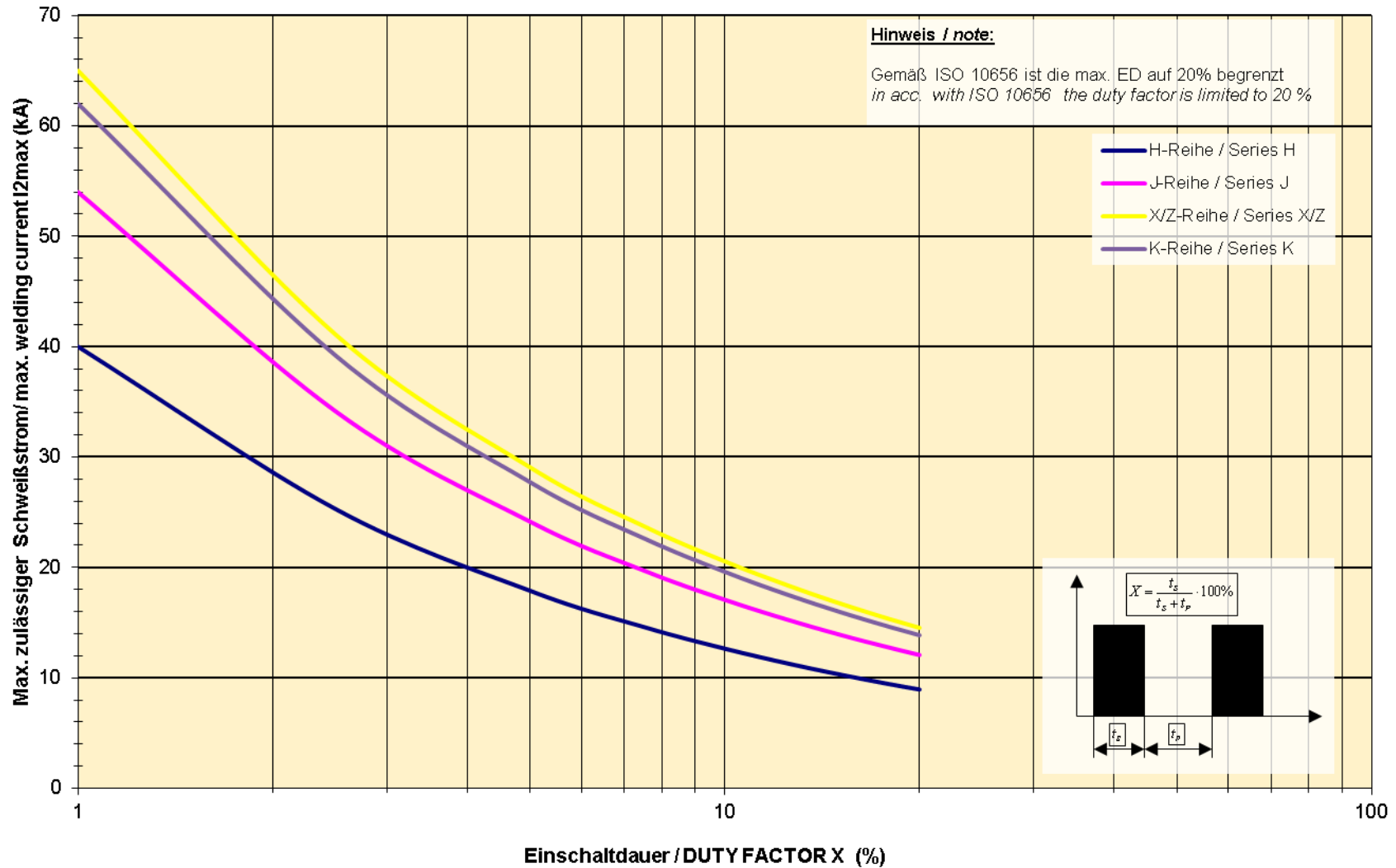
CNOMO E34.73.460.N Zangentransformator | Reihe Z*
CNOMO E34.73.460.N gun transformer | Series Z*



CNOMO E34.73.460.N Zangentransformator | Reihe Z*
CNOMO E34.73.460.N gun transformer | Series Z*



Belastungsdiagramm $I_{2max} = f(X)$
 Load diagram $I_{2max} = f(X)$



Ausgangskennlinie - ISO Reihe Z
Output characteristic - ISO series Z

