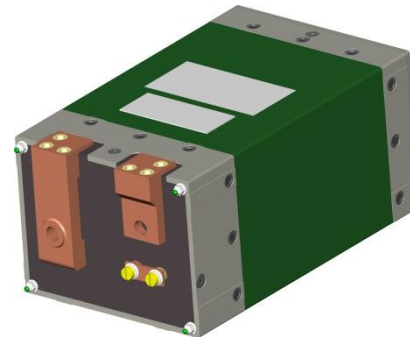
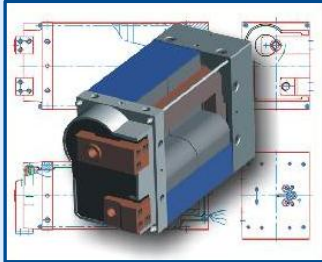


## ISO10656 Zangentransformator | Reihe J *ISO10656 gun transformer | Series J*

- Integrierte Temperaturüberwachung (T)  
Integrated thermal switches ( T )
- Strommessspule (M)  
*current sensing coil (M)*



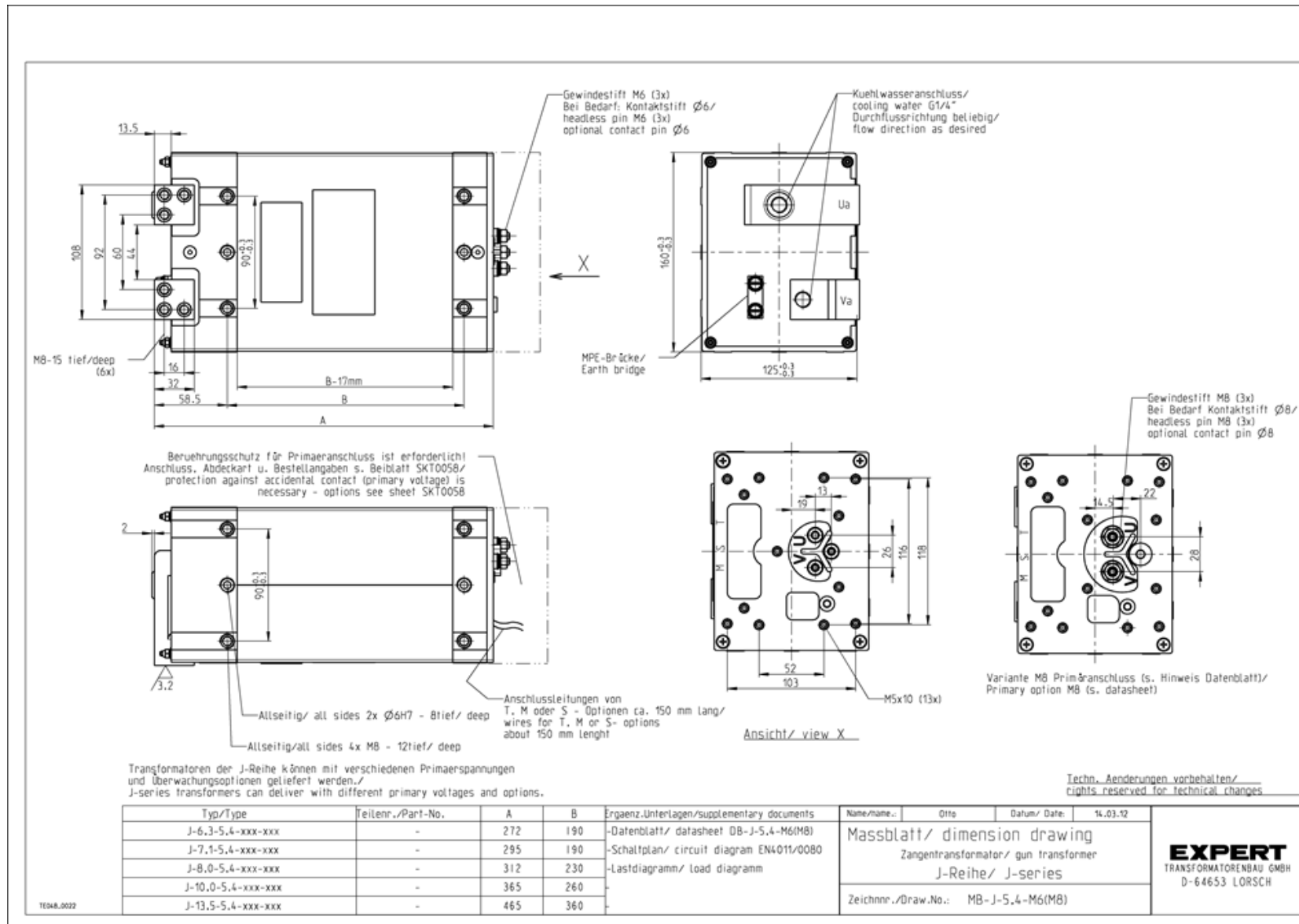
**ISO10656 Zangentransformator | Reihe J\***  
**ISO10656 gun transformer | Series J\***



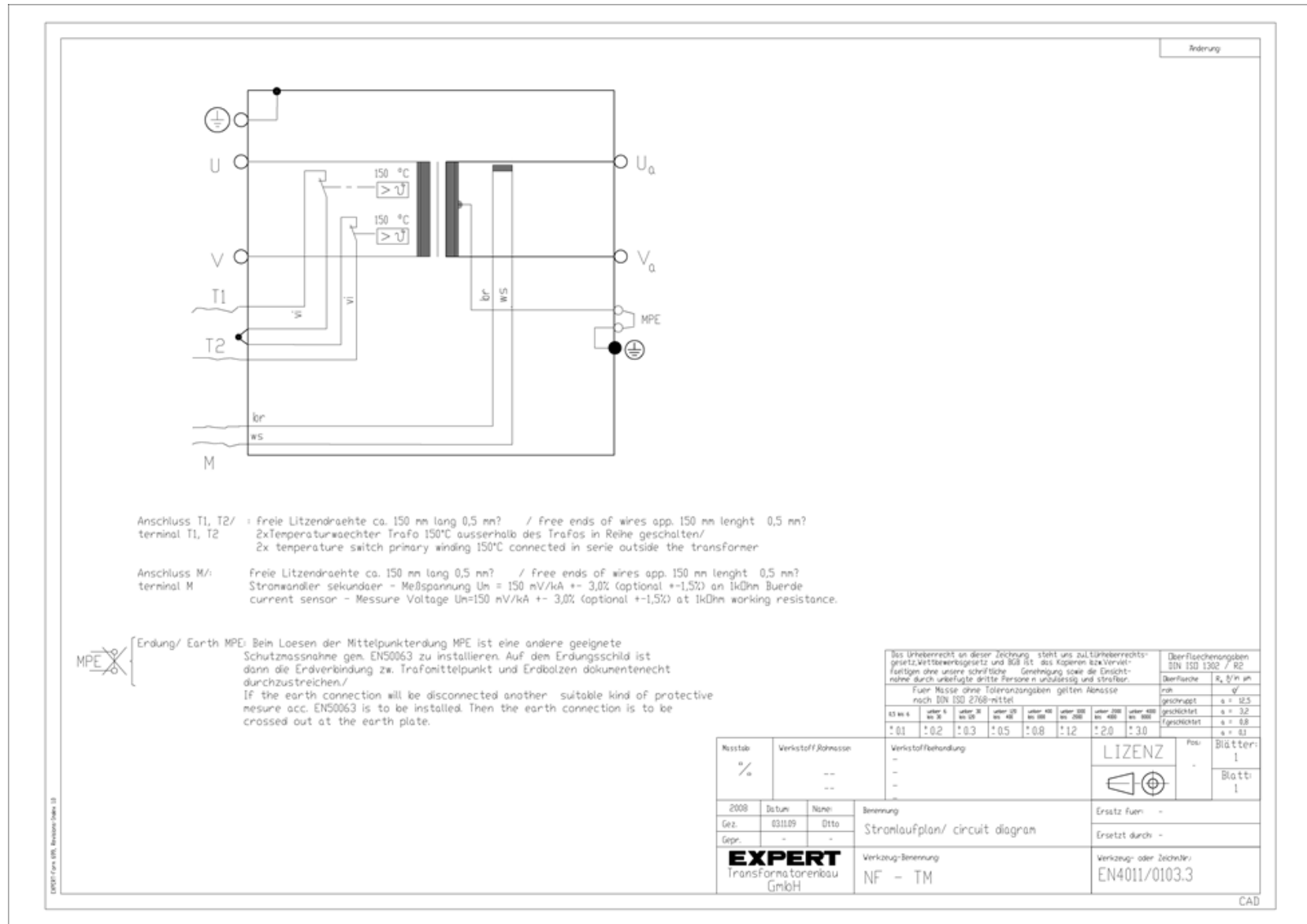
TYP / TYPE		J-6,3-5,4-400-TM	J-7,1-5,4-400-TM	J-8,0-5,4-400-TM	J-10,0-5,4-400-TM	J-13,5-5,4-400-TM
Nennspannung / nominal voltage	V	400 (andere Spannungen auf Anfrage, other voltages on request)				
Frequenz / frequency	Hz	50 (60 Hz auf Anfrage, on request)				
S <sub>20</sub> (Mittl. Bauleistg. 20% ED) / nominal power at 20%d.f.	kVA	75,8	85,3	96,4	120,1	162,7
S <sub>50</sub> (Mittl. Bauleistg. 50% ED) / nominal power at 50%d.f.	kVA	48	54	61	76	103
S <sub>100</sub> (Mittl. Bauleistg. 100% ED) / nominal power at 100%d.f.	kVA	33,9	38,2	43,1	53,7	72,8
U <sub>20</sub> (Sekundär-Leerlaufspannung) / secondary no-load voltage	V	6,3	7,1	8,0	10,0	13,5
I <sub>1P</sub> (Primärdauerstrom) / prim. constant current	A	85	95	108	134	182
I <sub>d</sub> (Dauerstrom) / permanent current	A	5.400				
Übersetzungsverhältnis / turns ratio	N <sub>1</sub> / N <sub>2</sub>	64	56	50	40	30
Transformatorimpedanz, sekundärseitig Z = R + j X Transformer impedance, secondary side Z = R + jX	μΩ	~ 125 = 106 + j 66	~ 130 = 113 + j 64	~ 137 = 122 + j 62	~ 155 = 136 + j 74	~ 200 = 174 + j 99
Masse / weight	kg	26,5	29,5	32	38,5	51,5
Farbe / color			RAL 6001 Grün / green	RAL 7005 Grau / grey	RAL 1004 Gelb / yellow	RAL 8001 Braun / brown
Stromessspule / current sensing coil		150 mV / kA ± 3%				
Temperaturwächter / temperature switch		2 x 140 °C, Bimetallschalter (Öffner) / bimetal (opener)				
Schutzart / protection class		Transformator IP 65, Primär- u. Sekundäranschlüsse IP 00 transformer IP 65, primary and secondary terminals IP 00				
Isolationsklasse / insulation class		F (155 °C)				
Elektrische Anschlüsse / Electrical connections	Primär / primary	Gewinde / thread Ø	mm	M6/ Stecksystem/ plug system MC TSB 135 M8 / Stecksystem / plug system MC TSB 150 (optional)		
		Tiefe / depth	mm	10		
	Sekundär / secondary	Gewinde / thread Ø	mm	3 x M8		
		Tiefe / depth	mm	15		
Kühlwassermenge Q (max. 30°C) / cooling water quantity	l / min	≥ 4,0				
Druckdifferenz Δp ( bei Q = 4 l / min ) / pressure drop	bar	≤ 0,6				

# ISO10656 Zangentransformator | Reihe J\*

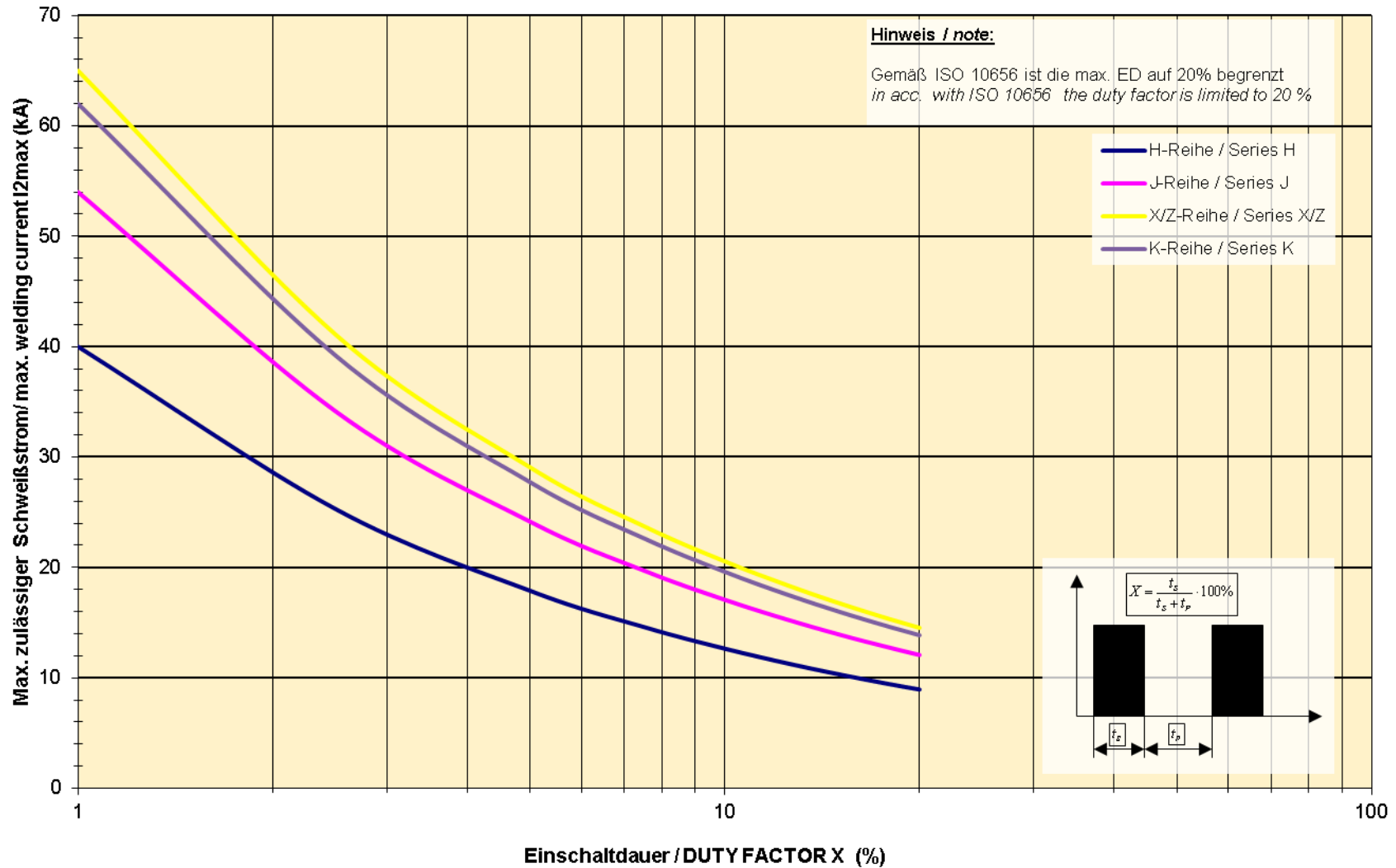
## ISO10656 gun transformer | Series J\*



# ISO10656 Zangentransformator | Reihe J\* ISO10656 gun transformer | Series J\*



Belastungsdiagramm  $I_{2max} = f(X)$   
 Load diagram  $I_{2max} = f(X)$



Ausgangskennlinie - ISO Reihe J  
Output characteristic - ISO series J

