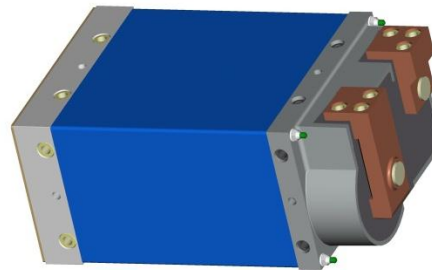
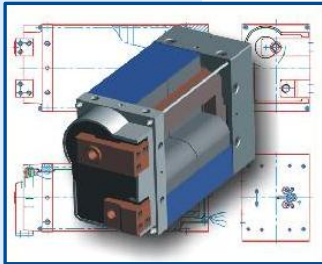


ISO10656 Zangentransformator | Reihe H *ISO10656 gun transformer | Series H*

- Integrierte Temperaturüberwachung (T)
Integrated thermal switches (T)
- Strommessspule (M)
current sensing coil (M)

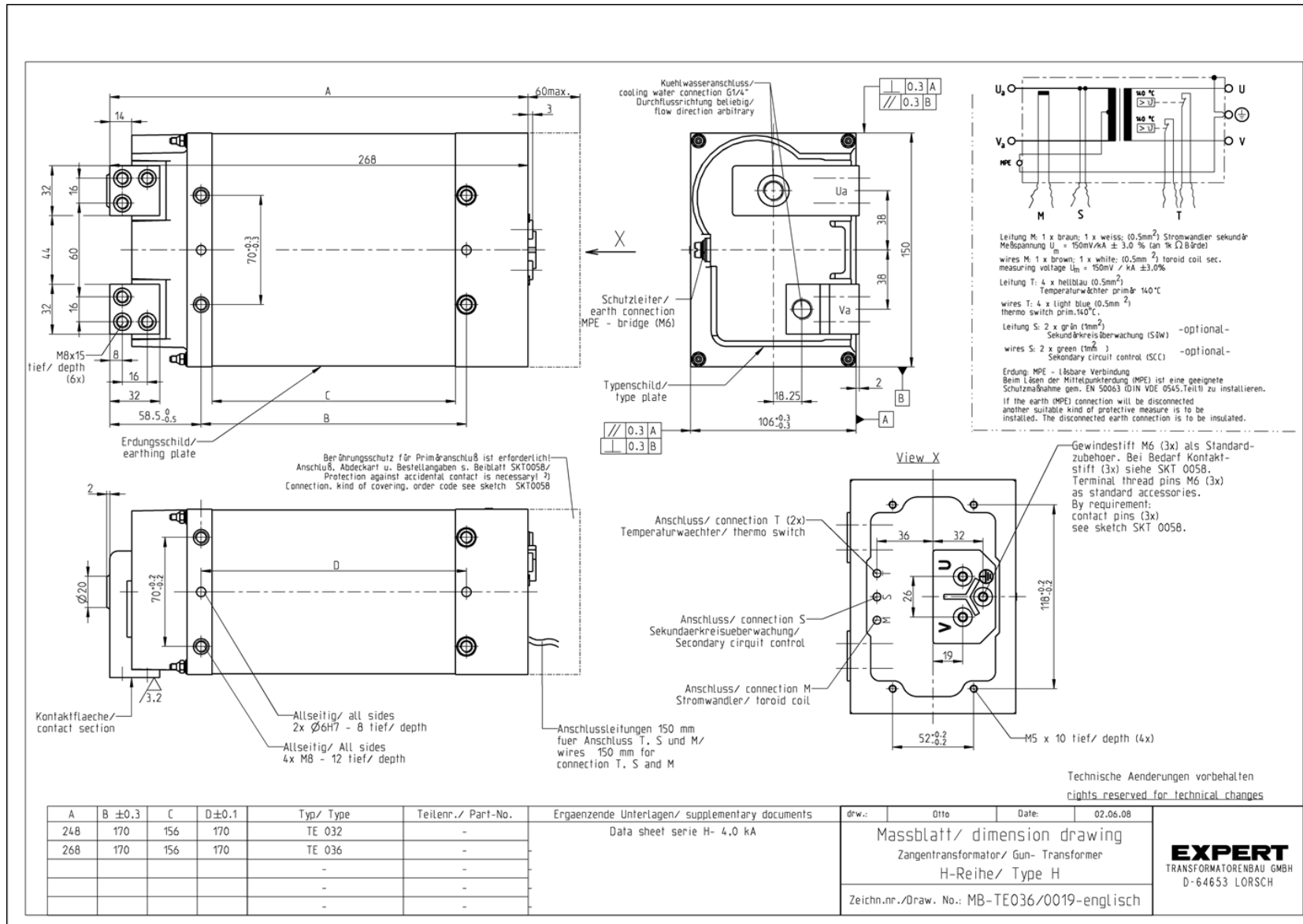


ISO10656 Zangentransformator | Reihe H*
ISO10656 gun transformer | Series H*

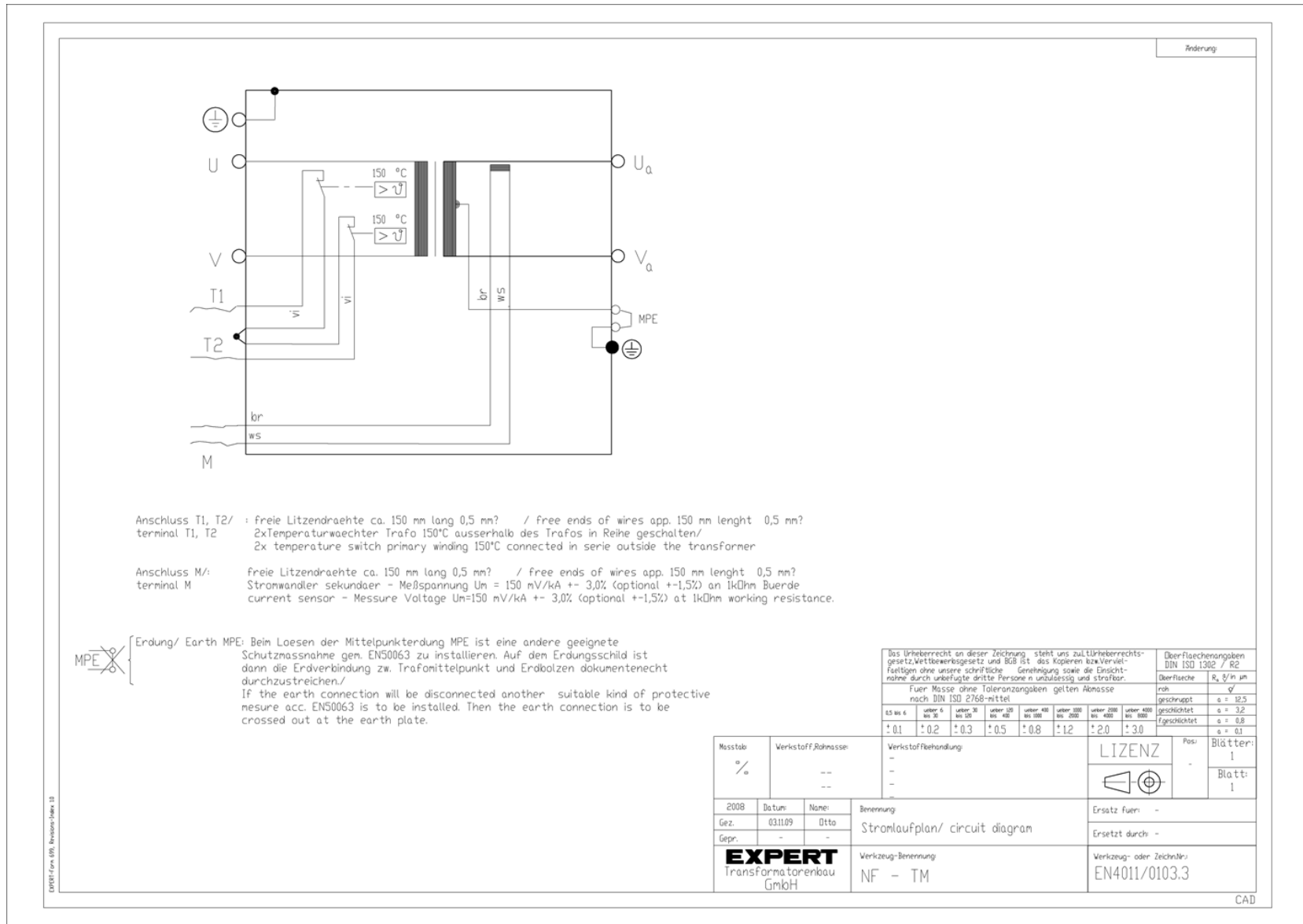


TYP / TYPE			H-5,6-4,0-400-TM	H-6,3-4,0-400-TM	
Nennspannung / nominal voltage	V		400 (andere Spannungen auf Anfrage, other voltages on request)		
Frequenz / frequency	Hz		50 (60 Hz auf Anfrage, on request)		
S ₂₀ (Mittl. Bauleistg. 20% ED) / nominal power at 20%d.f.	kVA		50,6	56,9	
S ₅₀ (Mittl. Bauleistg. 50% ED) / nominal power at 50%d.f.	kVA		32	36	
S ₁₀₀ (Mittl. Bauleistg. 100% ED) / nominal power at 100%d.f.	kVA		22,6	25,5	
U ₂₀ (Sekundär-Leerlaufspannung) / secondary no-load voltage	V		5,6	6,3	
I _{1P} (Primärdauerstrom) / prim. constant current	A		57	64	
I _d (Dauergleichstrom) / permanent DC current	A		4.000		
Übersetzungsverhältnis / turns ratio	N ₁ / N ₂		72	64	
Transformatorimpedanz, sekundärseitig Z = R + j X Transformer impedance, secondary side Z = R + jX	μΩ		~ 140 = 133 + j 44	~ 157 = 134 + j 82	
Masse / weight	kg		19	21	
Farbe / color			RAL 4005 Violett / violet	RAL 5015 Blau / blue	
Strommessspule / current monitoring coil			150 mV / kA ± 3%		
Temperaturwächter / temperatur switch			2 x 140 °C, Bimetallschalter (Öffner) / thermal switch (opener)		
Schutzart / protection class			Transformator IP 65, Primär- u. Sekundäranschlüsse IP 00 transformer IP 65, primary and secondary terminals IP 00		
Isolationsklasse / insulation class			F (155 °C)		
Elektrische Anschlüsse / Electrical connections	Primär / primary	Gewinde / thread Ø	mm	M6 / MC TSB 135 Stecksystem / plug system MC TSB 135	
		Tiefe / depth	mm	8	
	Sekundär / secondary	Gewinde / thread Ø	mm	3 x M8	
		Tiefe / depth	mm	15	
Kühlwassermenge / cooling water quant. Q (max. 30°C)	l / min		≥ 4,0		
Druckdifferenz / pressure drop Δp (Q = 8 l / min)	bar		≤ 0,6		

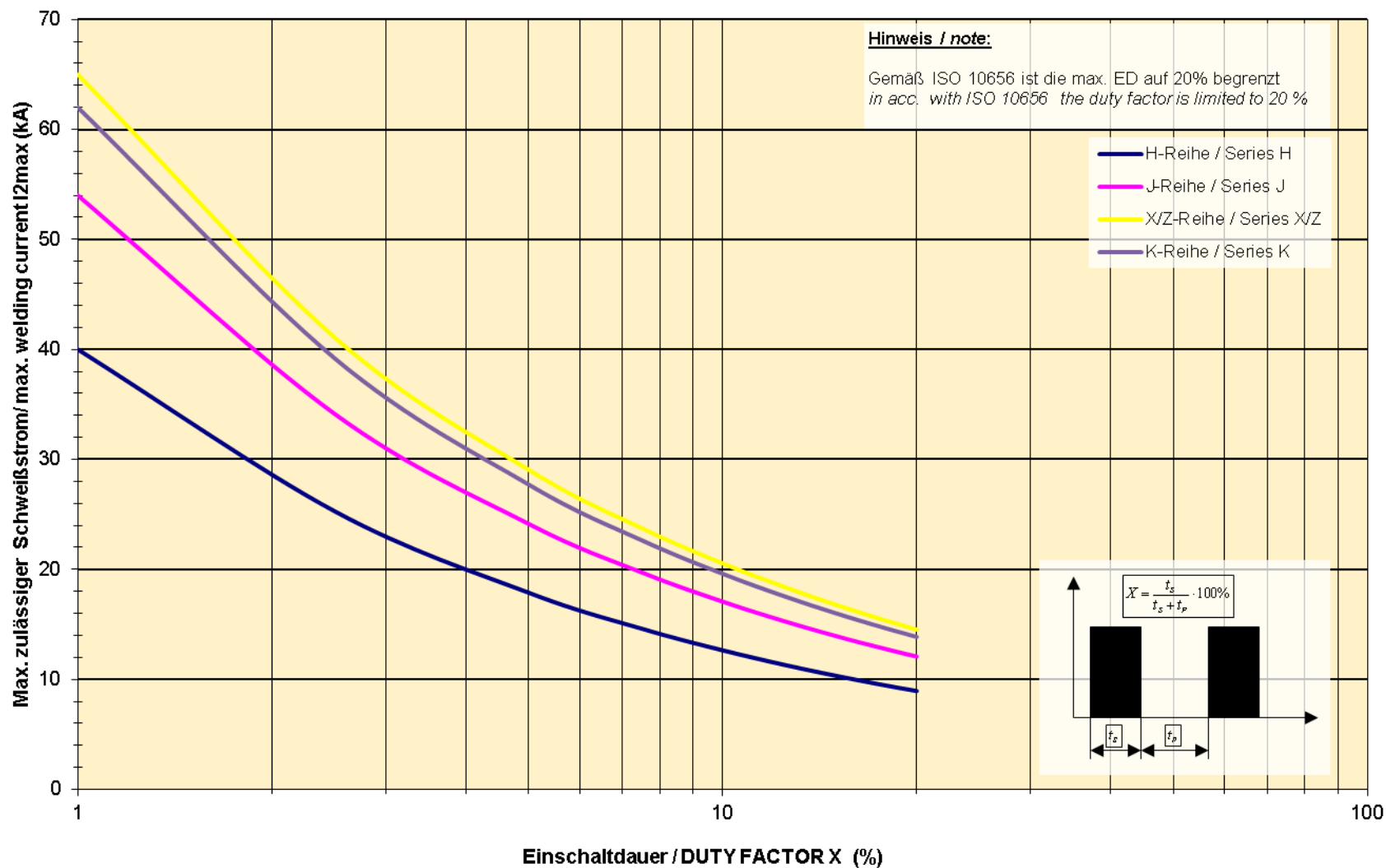
ISO10656 Zangentransformator | Reihe H*
ISO10656 gun transformer | Series H*



ISO10656 Zangentransformator | Reihe H* ISO10656 gun transformer | Series H*



Belastungsdiagramm I_{2max} = f (X)
 Load diagram I_{2max} = f (X)



Ausgangskennlinie - ISO Reihe H
Output characteristic - ISO series H

