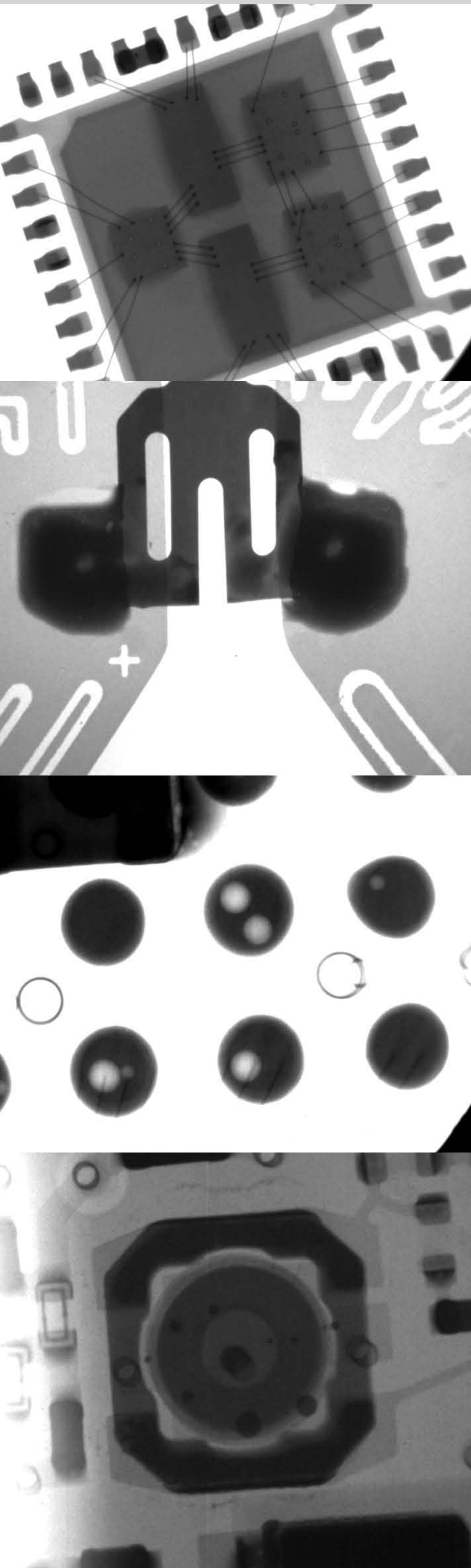


SCIENSCOPE X-SCOPE 1000

80kV, 10 Micron Microfocus X-RAY Inspection System

The X-Scope 1000 is a smaller, less costly high resolution x-ray inspection system designed for batch inspection.



Key features

- 4" x 3" digital flat panel detector (standard resolution)
- 80 kV- 10 micron focal spot X-Ray tube
- Z axis movement of the x-ray tube and sample stage
- Computer controlled kV and mA settings
- Computer controlled variable speed X-Y stage
- Full featured Image processing CPU with 23" LCD flat panel monitor
- Mega pixel mapping camera with zoom window - easy location and identification of faults
- Simple point and click inspection routines

Industrial Applications

- Inspection of over molded electrical connectors
- Encapsulated components
- Aluminum die castings
- Molded plastic components
- Ceramics
- Aerospace components
- Electrical / mechanical components
- Electronic components
- SMT assemblies
- Pharmaceuticals
- Counterfeit components
- Agriculture
- Cell phone battery inspection

User Interface

The screenshot shows the software interface with several key components labeled:

- Menu Bar:** Located at the top left, containing standard software navigation options like File, View, Image, Set, Help.
- Video Enhance Tool:** Located at the top center, providing options for image processing.
- Program Control:** Located at the top right, displaying X-ray parameters (KV 74, 75, 90; uA 89, 90; watt 6.74) and system status (Interlocks, Warm Up, Filter Level).
- Measurement Tools:** A vertical toolbar on the left side for various measurement functions.
- Main Display Panel:** The central area showing the X-ray image of a grid of circular components.
- Motion Control Panel:** Located on the right side, showing X, Y, R coordinates and movement controls.
- Mapping Camera Target:** A small inset window showing a top-down view of the sample stage.
- Stage View Panel Mapping Camera:** A larger inset window showing a detailed view of the sample stage.

X-Ray Tube

Tube Style	Closed Type
Tube Voltage	80kV
Tube Current	0.18mA
Focal Spot Size	10 Micron
Tube Cooling	Forced Air
Geometric Magnification	25X
System Magnification	250X

Digital Image Intensifier

Megapixel Camera	4" x 3" digital flat panel detector (standard resolution)
Speed	30 FPS
Grayscale	14-bit (16,384 shades of grayscale)
Camera Resolution	135 µm (1.0 megapixel)

X-Ray Cabinet

Dimension	1100mm (L) x 750mm (W) x 1400mm (H) 43.3" (L) x 29.5" (W) x 55.1" (H)
Sample Table Size	320mm x 250mm 12.5" x 9.8"
Sample Table Movement	X Axis 200mm, Y Axis 200mm Z Axis 200mm X Axis 7.8", Y Axis 7.8" Z Axis 7.8"
Weight	450 kg (992 Pounds) Steel - Lead - Steel welded construction

Power

Automatic switching power supply	110 - 230 VAC 50/60 Hz
----------------------------------	------------------------

Computer

Operating System	Microsoft Windows 7 PRO
------------------	-------------------------

Warranty

One year, parts and labor

Compliance

THE SCIENSCOPE X-SCOPE X-RAY INSPECTION SYSTEMS MEET THE FDA -CDRH REGULATION CFR 21 1020.40 SUBCHAPTER J FOR CABINET X-RAY SYSTEMS.THE FDA-CDRH STANDARD FOR CABINET X-RAY SYSTEMS STATES THAT RADIATION EMISSIONS WILL NOT EXCEED 500 MICRO R/HR 5 CM FROM ANY EXTERNAL SURFACE.

THE X-SCOPE X-RAY INSPECTION SYSTEMS TYPICALLY HAVE A RADIATION EMISSION READING OF LESS THAN 20 MICRO R/HR 5 CM FROM ANY EXTERNAL SURFACE.

ALL SCIENSCOPE X-SCOPE X-RAY SYSTEMS HAVE CE APPROVAL. SCIENSCOPE X-SCOPE X-RAY SYSTEMS ARE CLASSIFIED AS "CABINET X-RAY SYSTEMS" AND REQUIRE NO EXTERNAL RADIATION SHIELDING. WELDED STEEL / LEAD-STEEL CONSTRUCTION, NO VISIBLE LEAD SHIELDING.



FDA ACCESSION NUMBER: 0710198
CE REFERENCE NUMBER: CN.CE.0402-05.09

SCIENSCOPE International Inc.

Business Hours Monday ~ Friday (8AM~5PM PST/PDT)

Phone (800) 216-1800 Toll-Free, (909) 590-7273

FAX (909) 494-5513

Address 5751 Schaefer Ave. Chino, CA 91710

Website <http://www.scienscope.com/>

E-Mail info@scienscope.com

All trademarks, service marks and logos displayed are the property of their respective holders including SCIENSCOPE, Inc. January, 2014. © SCIENSCOPE International Inc., Chino, CA



SCAN TO RFQ