

## Contacting of HSD Connectors HF819

<b>Centers (mm/mil)</b>	12,0 / 472
<b>Temperature</b>	-20°C...+80°C
<b>Current (Circular)</b>	10,0 A
<b>Current (Internal)</b>	3,0 A
<b>Z</b>	100 Ohm
<b>Frequency</b>	1-2 GHz

### Spring Force Total (cN ±20%)

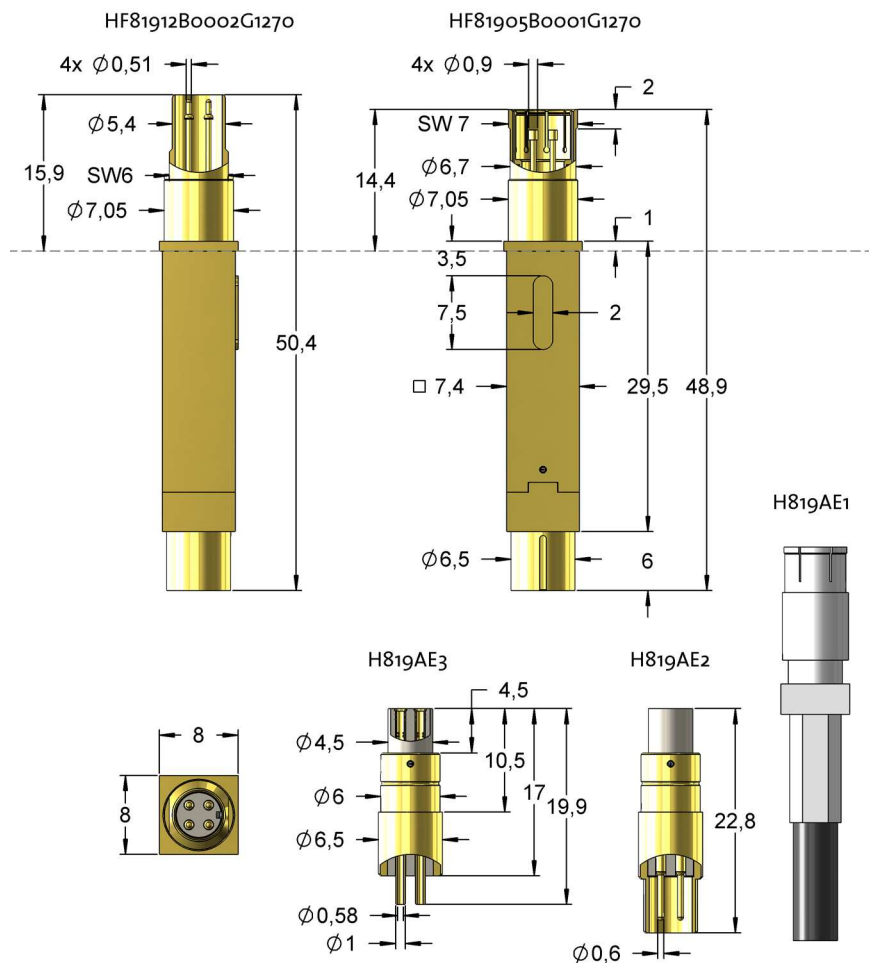
	Preload	Nominal Force
total	-	1270
Internal Contact	75	130
Circular Contact	300	750

### Travel (mm)

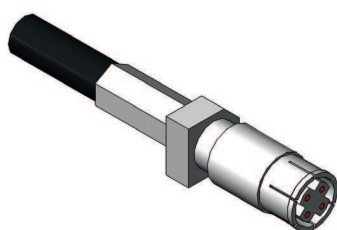
	Nominal	Maximum
Internal Contact	2,0	3,7
Circular Contact	5,0	6,0
Wrench Size	6,0 / 7,0	

### Materials and Plating

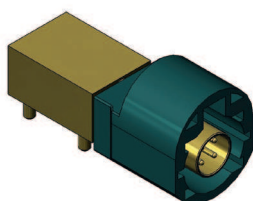
Internal Contact	BeCu, gold plated
Circular Contact	BeCu, gold plated
Barrel	Brass, gold plated
Spring Internal Contact	gold plated, Music wire
Spring Circular Contact	Stainless steel, unplated



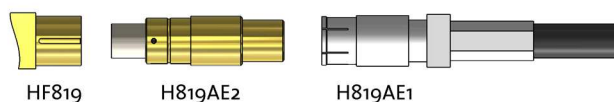
By combining connecting elements H819AE1 and H819AE2 the signal path can be realized without soldering. This leads to a well defined and reproducible measuring section.



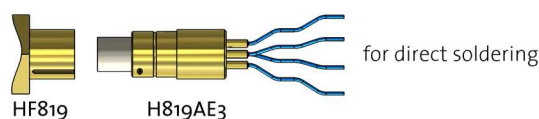
HSD-Female H819AE1



HSD-Male D4S20A-40ML5-Z



### Flexible connection



### Order Number

HF81905B0001G1270  
(for HSD Connector Male)  
HF81912B0002G1270  
(for HSD Connector Female)

Tip Style	Number	Material	Plating	Ø in mm	Version
	05	B	G	0,9	-
	12	B	G	0,51	-