

Features:

- Isolated mounting base 2500V~
- Pressure contact technology with
Increased power cycling capability
- Space and weight savings

Typical Applications

- Inverter
- Inductive heating
- Chopper

$I_{F(AV)}$	400 A
V_{RRM}	600~1600 V
I_{FSM}	8.3 A × 10³
I^2t	344 A² S × 10³



SYMBOL	CHARACTERISTIC	TEST CONDITIONS	T _J (°C)	VALUE			UNIT
				Min	Type	Max	
$I_{F(AV)}$	Mean forward current	180° half sine wave 50Hz Single side cooled, T _C =60°C	140			400	A
$I_F (RMS)$	RMS forward current		140			628	A
V_{RRM}	Repetitive peak reverse voltage	V _{RRM} tp=10ms V _{RM} = V _{RRM} +100V	140	600		1600	V
I_{RRM}	Repetitive peak current	at V _{RRM}	140			40	mA
I_{FSM}	Surge forward current	10ms half sine wave	140			8.30	KA
I^2t	I ² T for fusing coordination	V _R =0.6V _{RRM}				344	A ² S × 10 ³
V_{FO}	Threshold voltage		140			0.85	V
r_F	Forward slop resistance					0.68	mΩ
V_{FM}	Peak forward voltage	I _{FM} =1200A	25			1.90	V
t_{rr}	Reverse recovery time	I _{FM} =400A, tp=1000μs, -di/dt=20A/μs, V _R =50V	140		4.0		μs
$R_{th(j-c)}$	Thermal resistance Junction to case	Single side cooled				0.130	°C /W
$R_{th(c-h)}$	Thermal resistance case to heatsink	Single side cooled				0.04	°C /W
F_m	Terminal connection torque(M10)				12		N·m
	Mounting torque(M6)				6		N·m
T_{stg}	Stored temperature			-40		125	°C
W_t	Weight				1820		g
Outline	406F3						

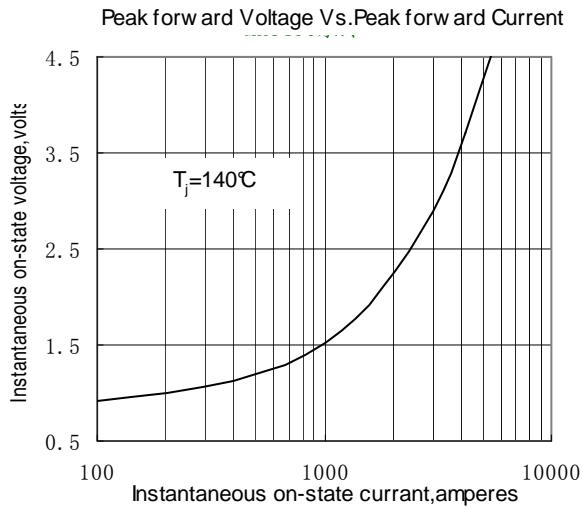


Fig.1

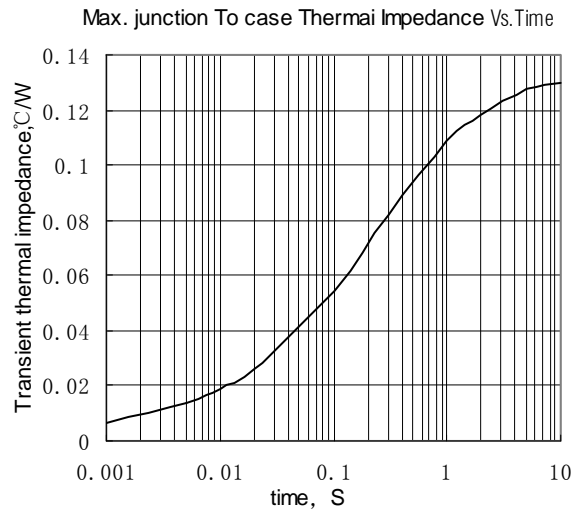


Fig.2

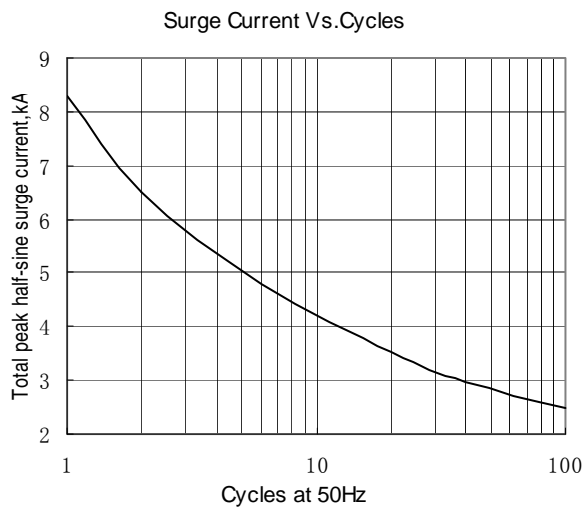


Fig.3

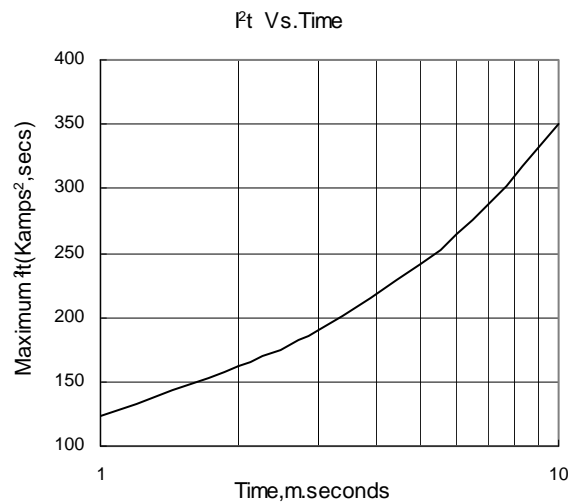
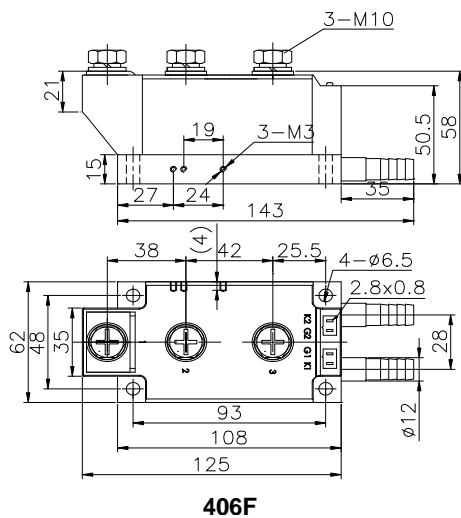


Fig.4

Outline:



406F

