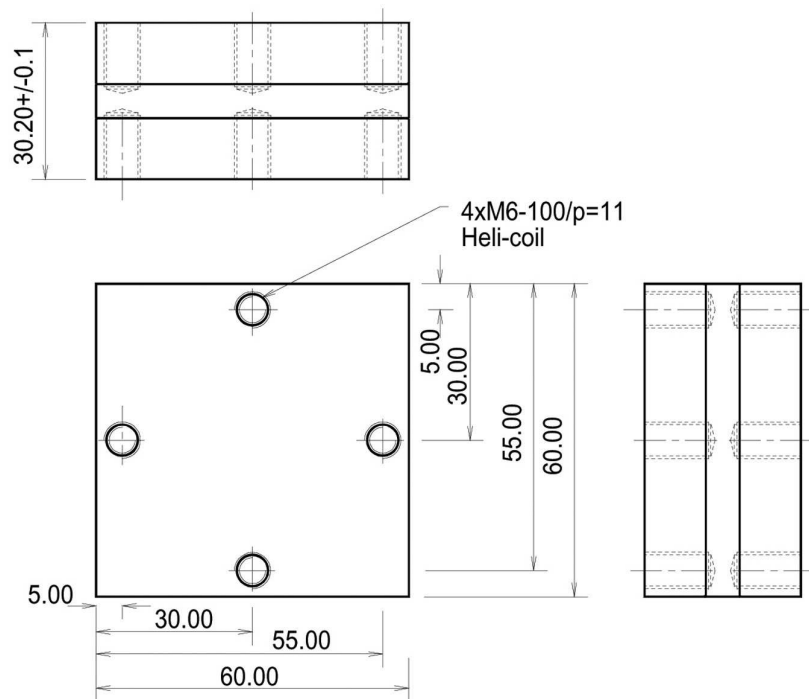


# CSP 405 B

Conduction-cooled capacitor

Technology Patented Worldwide



The CSP 405B offers superior electrical characteristics in the same physical dimensions as the CSP305B.

## Specifications

TYPE		CSP 405 B				
Dimensions (L x W x H)	mm	60 x 60 x 30.2				
Weight	kg	0.6				
Capacitance (±10%)	μF	0.33	0.66	1.33	2.6	5
Sinusoidal Voltage	$V_{rms}$	1000	900	700	500	
Peak Voltage	$\hat{V}$	1410	1270	990	710	
Max. Current	$A_{rms}$	600	850	950	1000	
Max. Power	kVA <sub>r</sub>	400				
Freq Range @ Full Power	kHz	193-434	96-217	59-216	50-138	51-80
Stray Inductance	nH	< 5				
Freq Limit	kHz	1000				

# CSP 405 B

Conduction-cooled capacitor

Technology Patented Worldwide

