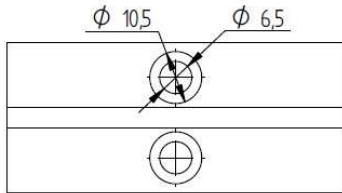
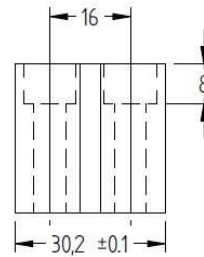


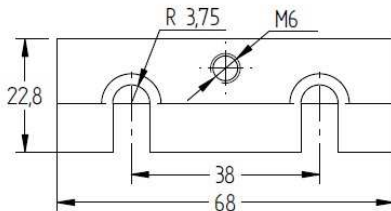
CSM 150/300

Conduction-cooled capacitor

Technology Patented Worldwide



An optional adaptive shoe - for CP100/150 users



Specifications

Type		CSM 150/300									
Dimensions (L x W x H)	mm	68 x 30 x 30.2									
Weight	kg	0.3									
Capacitance (±10%)	μF	0.05μF	0.1μF	0.17μF	0.33μF	0.5μF	0.66μF	1μF	1.33μF	2.4μF	
Sinusoidal Voltage	V _{rms}	1000			800		700		600		500
Peak Voltage	V	1410			1130		990		850		710
Max. Current	A _{rms}	300			400		450		500		600
Max. Power	kVA _r	300									
Freq Range @ Full Power	kHz	955-955	478-478	281-281	226-257	149-170	148-163	97-107	100-100	80-80	
Stray Inductance	nH	< 3									

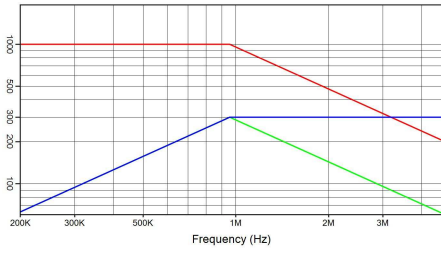
Celem Power Capacitors

Produced: 06-01-2014

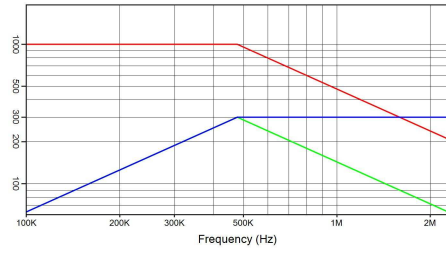
CSM 150/300

Conduction-cooled capacitor

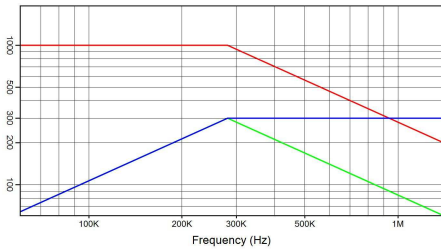
Technology Patented Worldwide



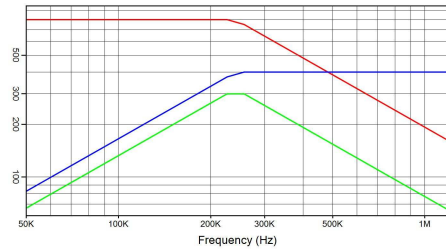
CSM 150/300 0.05 µF 1000 V_{rms} 300 A_{rms} 300 kVA_r
 I(A) — Q(kVA_r) — V_{rms} —



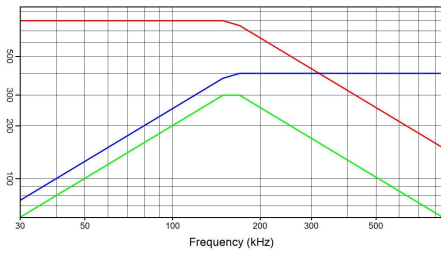
CSM 150/300 0.1 µF 1000 V_{rms} 300 A_{rms} 300 kVA_r
 I(A) — Q(kVA_r) — V_{rms} —



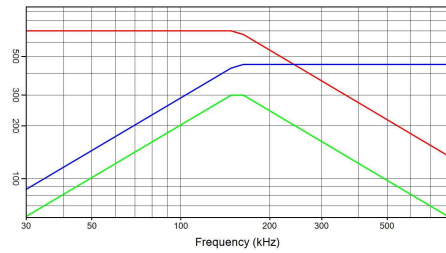
CSM 150/300 0.17 µF 1000 V_{rms} 300 A_{rms} 300 kVA_r
 I(A) — Q(kVA_r) — V_{rms} —



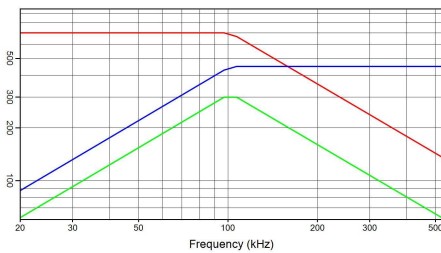
CSM 150/300 0.33 µF 800 V_{rms} 400 A_{rms} 300 kVA_r
 I(A) — Q(kVA_r) — V_{rms} —



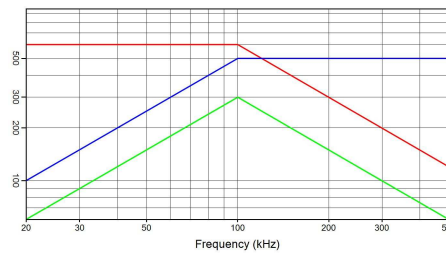
CSM 150/300 0.5 µF 800 V_{rms} 400 A_{rms} 300 kVA_r
 I(A) — Q(kVA_r) — V_{rms} —



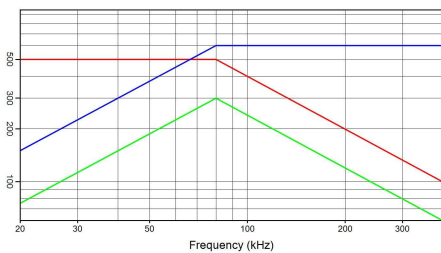
CSM 150/300 0.66 µF 700 V_{rms} 450 A_{rms} 300 kVA_r
 I(A) — Q(kVA_r) — V_{rms} —



CSM 150/300 1 µF 700 V_{rms} 450 A_{rms} 300 kVA_r
 I(A) — Q(kVA_r) — V_{rms} —



CSM 150/300 1.33 µF 600 V_{rms} 500 A_{rms} 300 kVA_r
 I(A) — Q(kVA_r) — V_{rms} —



CSM 150/300 2.4 µF 500 V_{rms} 600 A_{rms} 300 kVA_r
 I(A) — Q(kVA_r) — V_{rms} —

Celem Power Capacitors

Produced: 06-01-2014