



## RPM7200 Series

## MIL/COTS AC, 1PH EMI Power Line Filter

**RPM7200**  
**MILITARY/ COTS TO 50A**  
**PERFORMANCE TO 10GHZ**  
**MIL-STD-461/ DO-160**



### SPECIFICATIONS

Operating Freq.	: 50/60/400Hz
Max. Operating Voltage	: 300VAC
Ambient Temperature	: -40 to 70C
Hipot Rating (L-G)	: 1800VDC
Terminals (-T)	: S: M5 Studs
Typical Leakage Current	3.5mA/Line (250V/60Hz)
Applications	: Mil-461/ DO-160

**Note:**

\* Call for other termination types (e.g. Circular Mil-Connectors, etc.)

\*Leakage Current is determined by the line to ground capacitors in the filter. The capacitors can be easily varied to match the system leakage requirements.

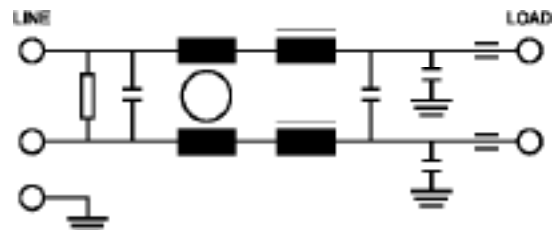
### TYPICAL INSERTION LOSS, dB (50/50ohm)

FREQ (MHz)	.01	.15	.5	1	10	1000	10000
CM(dB)	20	38	50	60	70	70	70
DM(dB)	28	45	60	60	60	-	-

### PART NUMBER/ ORDERING

RPM7200	-X (Amps)	-T	Weight LBS (KG) Typ.
	5	S	1.4 (0.6)
	10		1.4 (0.6)
	25		4.0 (1.8)
	50		6.5 (3.0)

### SCHEMATIC

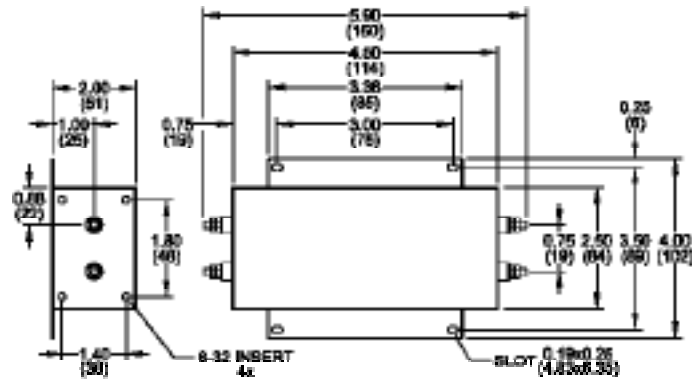


Reference purposes only.  
Specifications are subject to change.  
Consult factory to verify specifications.

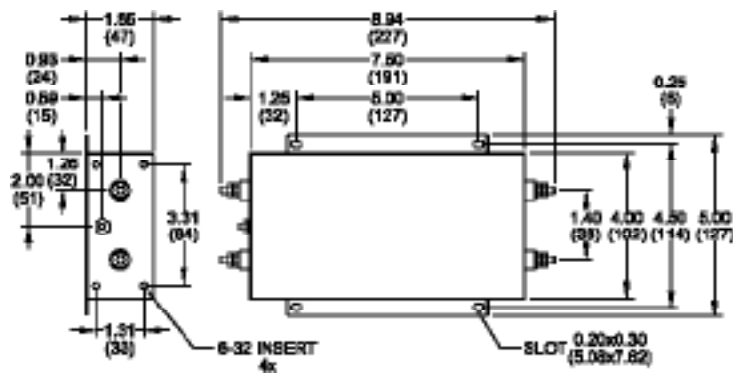
## RPM7200

### Mechanical Dimensions

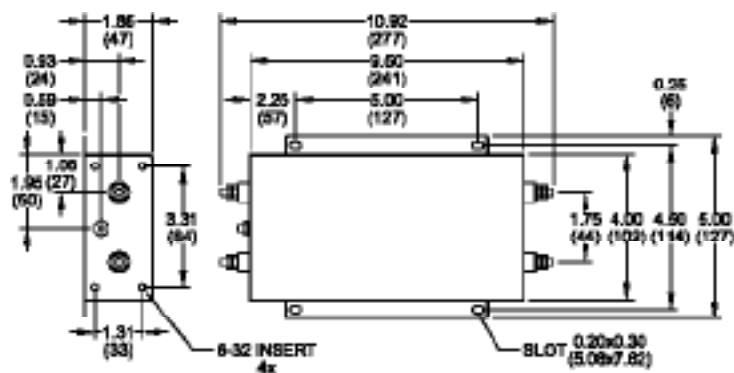
5/10Amp



25Amp



50Amp



TYPICAL TOLERANCE: +/-0.02 (0.50)

Reference purposes only.  
Specifications are subject to change.  
Consult factory to verify specifications.