



RPM7050 Series

MIL/COTS AC, 1PH, 1U Height EMI Power Line Filter

RPM7050
MILITARY/ COTS TO 30A
MIL-STD-461/ DO-160
1U HEIGHT



SPECIFICATIONS

Operating Freq.	: 50/60/400Hz
Max. Operating Voltage	: 300VAC
Ambient Temperature	: -40 to 70C
Hipot Rating (L-G)	: 1800VDC
Terminals (-T)	: S: M5 Studs
Typical Leakage Current	3.5mA/Line (250V/60Hz)
Applications	: Mil-461/ DO-160
Typ. Weight, LBS (KG)	: 1.5 (0.7)

Note:

* Call for other termination types (e.g. Circular Mil-Connectors, etc.)

*Leakage Current is determined by the line to ground capacitors in the filter. The capacitors can be easily varied to match the system leakage requirements.

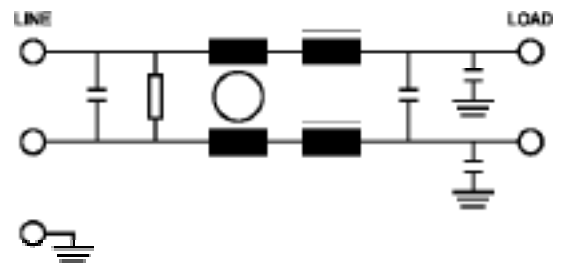
TYPICAL INSERTION LOSS, dB (50/50ohm)

FREQ (MHz)	.01	.15	.5	1	10	30
CM(dB)	16	32	50	50	45	30
DM(dB)	22	42	60	60	40	30

PART NUMBER/ ORDERING

RPM7050	-X (Amps)	-T
	5	S
	10	
	20	
	30	

SCHEMATIC

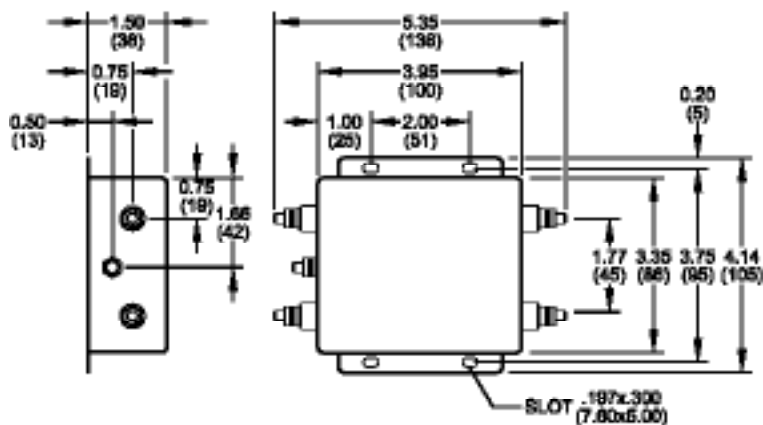




RPM7050

Mechanical Dimensions

5/10/20/30Amp



TYPICAL TOLERANCE: ± 0.02 (0.50)