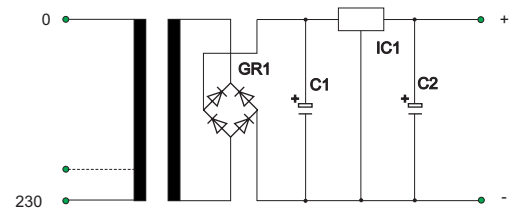
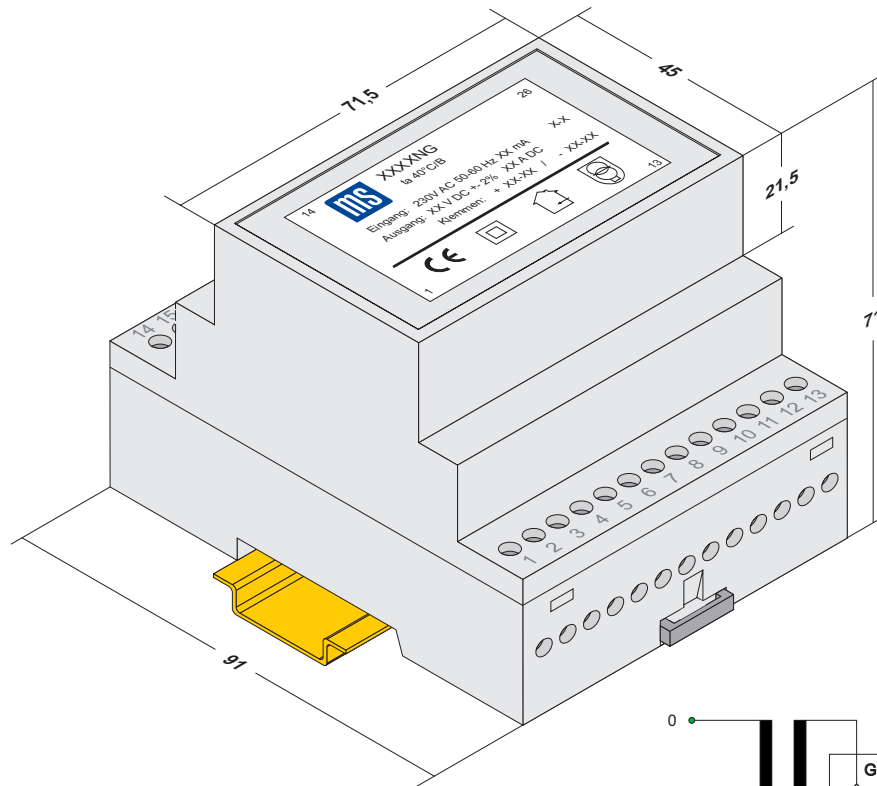


built-in power supply for cup track TS 35 2 ... 7,5 W



schematic

| RNG | order-nr | input | tapping | power / voltage / current | |
|-----|----------|-------|---------|---------------------------|-----------------|
| | MS4569NG | 230V | keine | 7,5W | 24,0VDC/0,31ADC |
| | MS4570NG | 230V | keine | 7,2W | 12,0VDC/0,60ADC |
| | MS4571NG | 230V | keine | 5,0W | 5,0VDC/1,00ADC |
| | MS4528NG | 230V | 200 V | 2,0W | 3,5VDC/0,60ADC |

technical datas:

input-voltage/voltage-tolerance:
or
output-tolerance:

230 V / 50 - 60 Hz \pm 10%
other voltage on demand
 \pm 2%

output-ripple:
characteristic:
ambient temperature:
protection-class:
short-circuit-proof protection:
safety standards:

max. 2,5 mV_{ss}
controlled, short-circuit-proof
0 - +40°C
II / IP00
primary temperature-protection
EN 60742 (VDE 0551), DIN 19240