



# STONTRONICS

THE POWER TO SUPPLY

**Open Form Chassis Mounting Transformers**  
**OCU range - 115/230 Vac in, dual output**  
**OCS range - 230 Vac in, dual output**

Electrical Specifications

## Safety Certifications



Two ranges of U-clamped chassis-mounting low voltage Output mains transformers, each range differing only in the input voltages it takes. The OCU caters for 115 and 230 V input, and the OCS range has a single winding - for 230 V input. Each range covers 5 output voltages and 7 power ratings and has 2 separate output windings, for a wide range of independent, series, parallel or centre-tapped outputs. A double-section bobbin is used to maximise inter-winding insulation; manufacture conforms to EN60742 and EN60950.

### Note

During manufacture the pressure from the winding wire on the sides of the bobbin tends to push out the sides of the bobbin, increasing the row separation of the pins, the separation should stay within the  $\pm 0.5\text{mm}$  specified in the dimensions table:

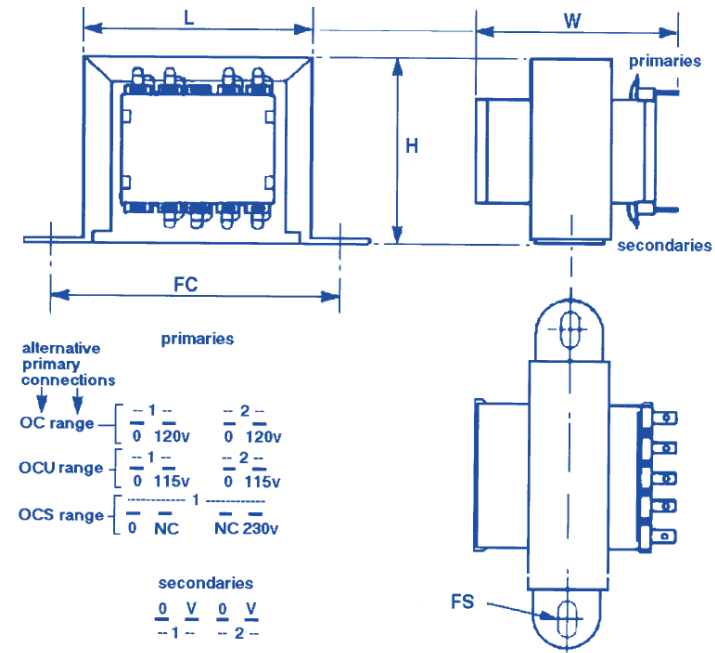
### Information

Ratings (VA)	6	12	25	50	75	100	200
--------------	---	----	----	----	----	-----	-----

Dimensions (mm)							
Length L	45	60	69	78	88	88	96
Width	38	46	55	63	70	70	85
Height H	37	51	58	65	73	73	80

Mounting Holes							
Fixing Centres FC	53	72	80	92	102	102	68 x 60
Fixing Slots FS	4 x 6	4 x 6	4 x 8	4 x 8	5 x 9	5 x 9	4

Other							
Weight (gm)	180	440	675	1000	1500	1500	3200
Typical regulation (%)	-	25	10	10	9	8	10



Rating (VA)	Output (Vrms)	Part Numbers	
		OCU (115/230 Vin)	OCS (230 Vin)

6	6 + 6	0101	0101
	9 + 9	0102	0102
	12 + 12	0103	0103
	15 + 15	0104	0104
	18 + 18	0105	0105
	20 + 20	0106	0106
	24 + 24	0107	0107
12	6 + 6	0201	0201
	9 + 9	0202	0202
	12 + 12	0203	0203
	15 + 15	0204	0204
	18 + 18	0205	0205
	20 + 20	0206	0206
	24 + 24	0207	0207
25	6 + 6	0301	0301
	9 + 9	0302	0302
	12 + 12	0303	0303
	15 + 15	0304	0304
	18 + 18	0305	0305
	20 + 20	0305	0305
	24 + 24	0307	0307
50	6 + 6	0401	0401
	9 + 9	0402	0402
	12 + 12	0403	0403
	15 + 15	0404	0404
	18 + 18	0405	0405
	20 + 20	0406	0406
	24 + 24	0407	0407
75	6 + 6	0501	0501
	9 + 9	0502	0502
	12 + 12	0503	0503
	15 + 15	0504	0504
	18 + 18	0505	0505
	20 + 20	0506	0506
	24 + 24	0507	0507
100	6 + 6	0601	0601
	9 + 9	0602	0602
	12 + 12	0603	0603
	15 + 15	0604	0604
	18 + 18	0605	0605
	20 + 20	0606	0606
	24 + 24	0607	0607
200	6 + 6	0701	0701
	9 + 9	0702	0702
	12 + 12	0703	0703
	15 + 15	0704	0704
	18 + 18	0705	0705
	20 + 20	0706	0706
	24 + 24	0707	0707