

B200

1000VA - 2000VA

Line Interactive

The Borri B200 - An advanced UPS with Pure Sinewave Output

The B200 range utilises digital Line Interactive (VI) technology with a digitized PWM-based controller providing a pure sinewave output, making it perfect for sensitive applications where pure power is required. The range has been developed as a compromise between Off-line (VFD) and On-line Double Conversion (VFI) technology.

The B200 UPS includes an AVR (Automatic Voltage Regulator) as standard, making the UPS enormously effective even in poor mains supply conditions. With its wide input voltage window the UPS regulates a precise output voltage without switching to battery power, even if the input voltage fluctuates by as much as 30% from normal. This impressive feature extends battery service life and ensures the batteries are in prime condition, fully charged and ready to offer maximum runtime should the mains power fail completely.

The unit features RJ11 & RJ45 filtering for connection of telephone, modem and router lines, separate IEC power outlets for surge suppression only (ideal for valuable non essential loads) and an LCD screen displaying connected load and battery charge levels, input and output voltages and warnings for overload and fault conditions.

The free download of intelligent shut-down and monitoring software enables your PC to communicate with the UPS via the USB port using the cable provided with the product. The software enables UPS start-up and shut-down programming, data and history logging and email messaging (alerting users to the UPS status across the local network).

The software is compatible with most operating systems, providing a safe shut down in the event of an extended power failure. Additionally, the UPS automatically restarts upon power being restored.

The range ensures effective and high quality protection for all connected devices.



B200 Main Features

- Pure Sinewave Output
- Line Interactive (VI) Technology with AVR
- PWM Based Controller
- Cold Start Feature
- Inbuilt Protection for Modem & Telephone
- Automatic Start
- LCD Display
- USB Connectivity
- Intelligent Shutdown and Monitoring Software

B200

Technical Specification



○ LCD Display



○ Separate Surge Protected & Battery Backup Outlets



○ USB Communication Port



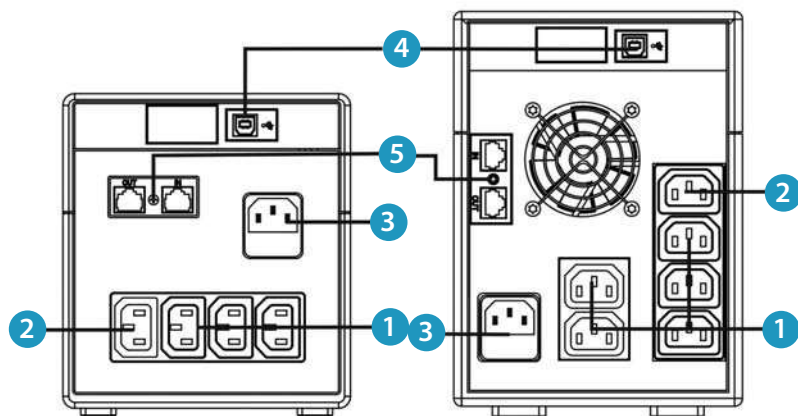
○ Modem, Phone Line, Network Surge Protection

| MODELS | B200-1000 | B200-1500 | B200-2000 |
|-----------------------------|--|-----------------|--------------|
| Power (VA) Max | 1000 | 1500 | 2000 |
| Power (Watts) | 700 | 1050 | 1400 |
| INPUT | | | |
| Input Voltage | 220/230/240 VAC | | |
| Input Voltage Window | 162-290 VAC | | |
| Input Frequency | 50/60Hz (Auto Sensing) | | |
| OUTPUT | | | |
| Voltage Regulation | +/- 10% (Battery Mode) | | |
| Frequency Regulation | +/- 1Hz (Battery Mode) | | |
| Transfer Time | Typical 2-6mS; 10mS Max | | |
| Waveform | Pure Sinewave (Battery Mode) | | |
| PROTECTION | | | |
| Full Protection | Overload, Battery discharge and Overcharge Protection | | |
| DISPLAY | | | |
| LCD Display | AC Mode, Battery Mode, Load Level, Battery Level, Input Voltage, Output Voltage, Overload, Fault & Battery Low | | |
| FEATURES | | | |
| | Off-Mode Charging, AVR, Auto-restart, Cold Start, USB, RJ11 & 45 Filters, LCD Display | | |
| BATTERY | | | |
| Type & Number | 12V 7ah x 2 | 12V 9ah x 2 | 12V 10ah x 2 |
| Charging Time | 6 hours recovery to 90% | | |
| MECHANICAL | | | |
| Dimensions (WxDxH)* | 146 x 350 x 160 | 246 x 397 x 205 | |
| Net Weight (KG) | 9 | 12.2 | 13.7 |
| Battery Protected Outputs | 3 | 5 | |
| Surge Protected Outputs | 1 | 1 | |
| ENVIRONMENT | | | |
| Operating Temperature Range | 0°C - 40°C | | |
| Humidity | 0-90% Relative Humidity (Non Condensing) | | |
| SOFTWARE | | | |
| Connection | USB Connectivity | | |
| Operating System | Supports Windows 2000/2003/XP/Vista/2008, Windows 7, Linux, Unix and MAC | | |

*Dimensions in millimeters

Rear view of B200-1000

Rear view of B200-1500/2000



- ① Battery Backup Outlets
- ② Surge Protected Outlets
- ③ AC Input
- ④ USB Communication Ports
- ⑤ Modem/Phone Line/Network Surge Protection

Stontronics Ltd

Chancerygate Business Centre, Cradock Road, Reading, Berkshire, RG2 0AH

Tel: +44 (0) 118 931 1199 - Fax: +44 (0) 118 931 1145 - Email: info@stontronics.co.uk - www.stontronics.co.uk

Stontronics Ltd is not responsible for typographical errors. Product specifications are subject to change without notice.