



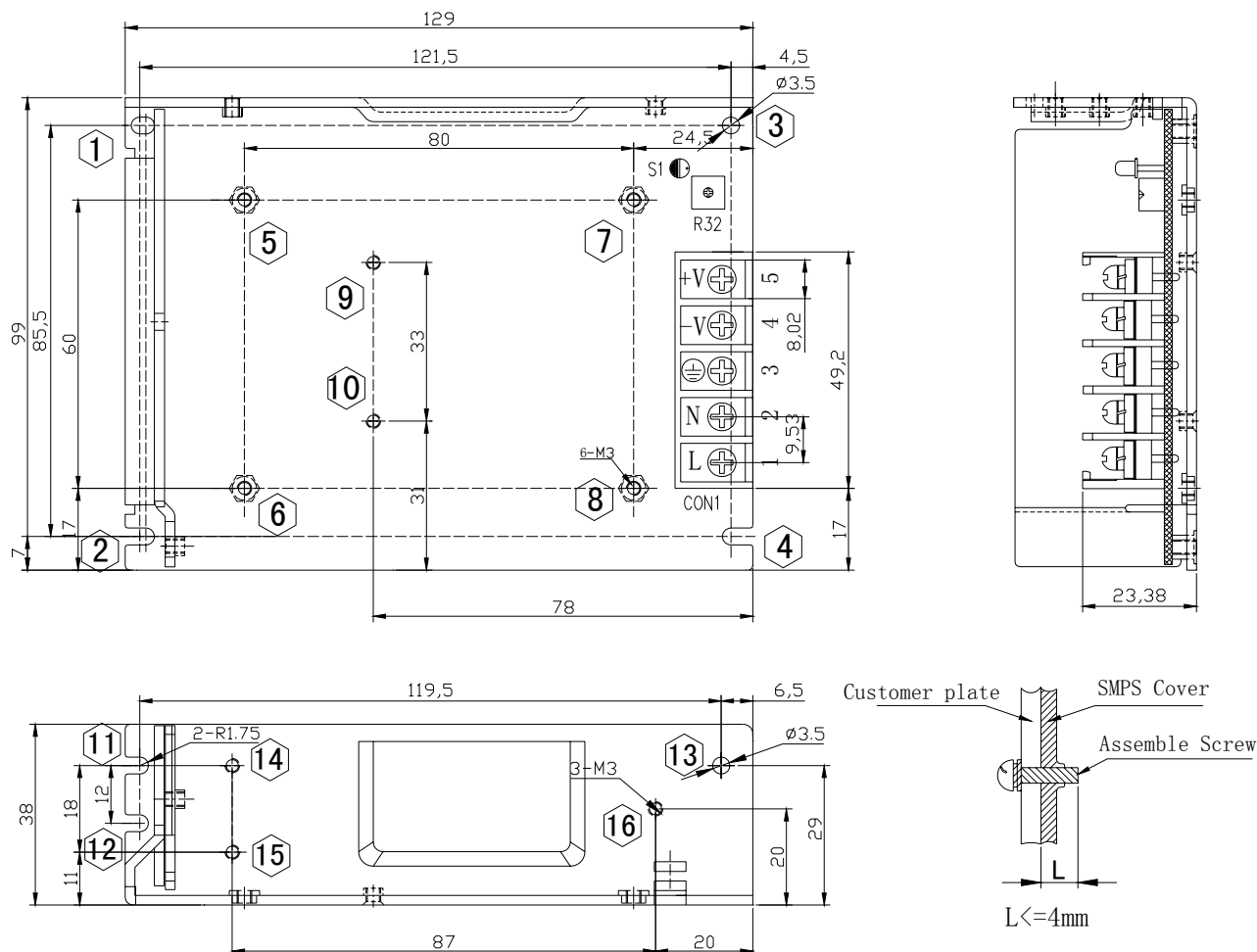
### Features:

- No Load power consumption<0.5W
- Universal AC input range
- Miniature size,high power density,high efficiency,long life and high reliability
- Withstand 300VA surge input for 5 sec.
- Output protections: OLP/OVP/SCP
- Wide operating ambient temp (-25℃~70℃), 100% @50℃、70%@70℃
- Operating altitude up to 5000M
- All using 105℃ long life electrolytic capacitors.
- 100% full load burn-in test
- Easy assembling from top side
- PCB soldering side with conformal coating
- Suitable for critical applications
- 3 years warranty

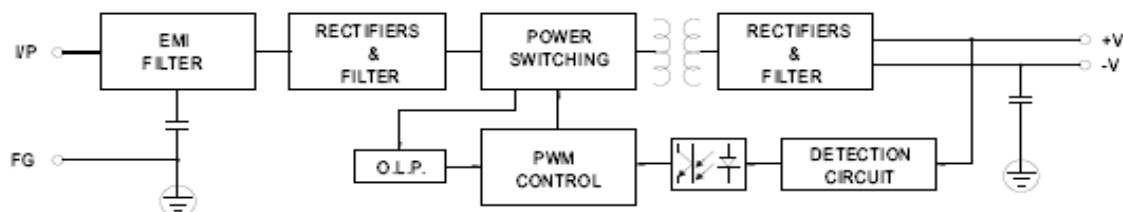
MODEL		PD-75-5	PD-75-12	PD-75-15	PD-75-24	PD-75-48	
OUTPUT	DC Output	5V	12V	15V	24V	48V	
	Rated Current	12A	6A	5A	3.2A	1.62A	
	Current Range      Note 1	0~12A	0~6A	0~5A	0~3.2A	0~1.62A	
	Ripple and Noise (-25℃~70℃) Note 2	<80mV	<120mV	<150mV	<200mV	<200 mV	
	Voltage ADJ.    Range	-5%~+10% of rated output voltage					
	Voltage Accuracy	±3.0%	±3.0%	±3.0%	±3.0%	±3.0%	
	Line Regulation	±0.5%	±0.5%	±0.5%	±0.5%	±0.5%	
	Load Regulation	±2.0%	±2.0%	±2.0%	±2.0%	±2.0%	
	Set-up Time	<2.0S (115Vac input, Full load); <1.5S (230Vac input, Full load)					
	Hold up Time	>20mS(115Vac input, Full load); >50mS(230Vac input, Full load)					
	Temperature Coefficient	±0.03%/℃					
	Overshoot and Undershoot	<5.0%					
INPUT	Voltage Range	90Vac~264Vac,    127~370Vdc					
	Frequency Range	47Hz~63Hz					
	Efficiency ( Typical)	115Vac input	79%	84%	85%	87%	88%
		230Vac input	80%	85%	86%	88%	89%
	AC Current (max.)	<2.5A(max)					
	Inrush Current (Typical)	20A@115Vac      40A@230Vac      Cold start					
PROTECTION	Leakage Current	Input—output:<0.25mA      Input—PG:<0.75mA					
	Over Load	105%~150% of rated output current, constant power					
	Over Voltage	105%~150% of rated output voltage, Constant Voltage					
	Short Circuit	Long-term mode, auto recovery					
ENVIRONMENT	Operating amb. Temp. & Hum.	-25℃~70℃;    20%~90%RH    No condensing (refer to the derating curve)					
	Storage Temp. & Hum.	-40℃~85℃;    10%~95%RH    No condensing					
SAFETY & EMC  Note 3	Safety Standards	UL60950-1 2 <sup>nd</sup> Ed; IEC 60950-1:2005(2 <sup>nd</sup> Ed) ;EN60950-1:2006					
	Withstand Voltage	Primary-Secondary:3.0KVac; ≤10mA .Primary-PG:1.5KVac; ≤10mA. Secondary-PG:0.5KVDC;≤10mA.					
	Isolation Resistance	≥100M ohms					
	EMC Emission	Compliance to EN55022,EN55024 ClassB					
	Harmonic Current	Compliance to EN61000-3-2,-3					
	EMC Immunity	Compliance to EN61000-4-2,3,4,5,6,8,11;EN55024,EN61000-6-2 heavy industry level					
OTHERS	MTBF (MIL-HDBK-217F)	More than 200,000Hrs (25℃, Full load)					
	Dimension    (L*W*H)	129x98x38mm					
	Packing	30PCS/CTN, 14.2KGS, 0.044CBM					
	Cooling method	Cooling by free air convection					
NOTE	1.    All parameters NOT specially mentioned are measured at rated input, rated load and 25℃ of ambient temperature. 2.    Measured at 20MHz of bandwidth by using a 12" twisted pair-wire terminated with a 0.1 uF & 10uF parallel capacitor. 3.    The SPS is considered a component which will be installed into final equipment. The equipment must be re-confirmed that it still meets EMC directives. 4.    Powerld offer accessories for Din-35 rail bar. Please contact sales staff for details.						

### Mechanical Specification

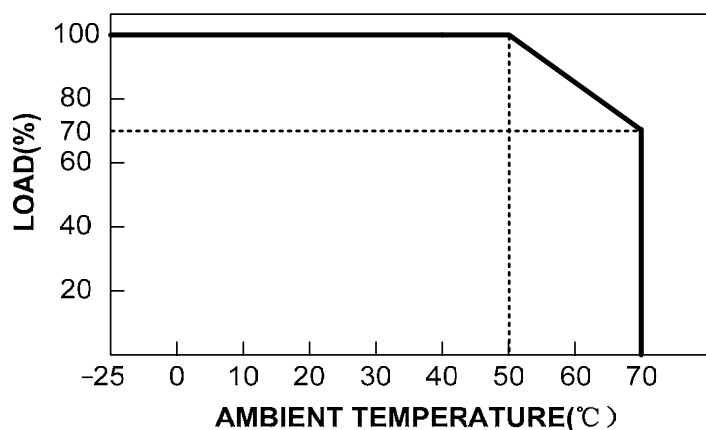
Unit: mm



### Block Diagram



### Derating Curve



Stontronics Ltd

Chancerygate Business Centre, Cradock Road, Reading, Berkshire, RG2 0AH

Tel: +44 (0) 118 931 1199 - Fax: +44 (0) 118 931 1145 - Email: info@stontronics.co.uk - www.stontronics.co.uk

Stontronics Ltd is not responsible for typographical errors. Product specifications are subject to change without notice.