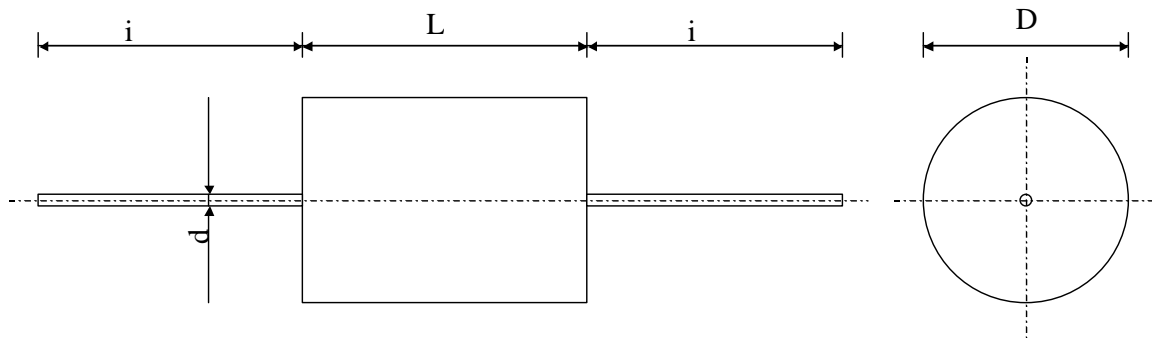


#6139

Discharge capacitors

PPMF 900-0237 d J



Dielectric of metallized polypropylene

Plastic sleeve / Epoxy resin sealing

Parameter	Symbol		Value	Unit	Condition
Capacitance	C		0.237	μF	1 V / 1 kHz
Tolerance			± 5	%	
Rated voltage	U_n		9000	V	
slope of voltage variation	$du/dt \text{ max.}$		6000	V/ μsec	max. repetitive
Tangent delta	$\text{tg}\delta$		< 4.0	10^{-4}	1 V / 1 kHz
Tangent delta	$\text{tg}\delta$		< 4.0	10^{-4}	1 V / 1 kHz
Stray inductance	ESL		≤ 25	nH	
Insulation resistance	$R_i \times C$		20'000	s	500 VDC - 1 min
Test voltage between terminals	U T1		13000	VDC	10 s
Test voltage terminals to case	U T2		10'000	VDC	10 s.
Time between pulse			≥ 1	s	

Dimension	Symbol			Unit	Conditions
Diameter	D		≤ 55	mm	
Height	L		≤ 55	mm	
Terminals					
Thread	d		1.2	mm	
	i		≥ 70	mm	
	M1				
	M0	18.12.2012	HJJ		
	Modification	Date	Visa émetteur		

Condensateurs CH 1400 Yverdon, Switzerland
 Kondensatoren Tel.: ++41 24 445 66 88
 Capacitors Fax: ++41 24 445 66 89

Leclanché
Capacitors
A FISCHER & TAUSSCHKE COMPANY

HJJ

www.Lcap.ch
 06.12.2012

capinfo@Lcap.ch
 faisab6139.XLS