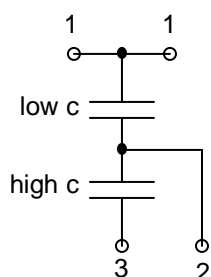


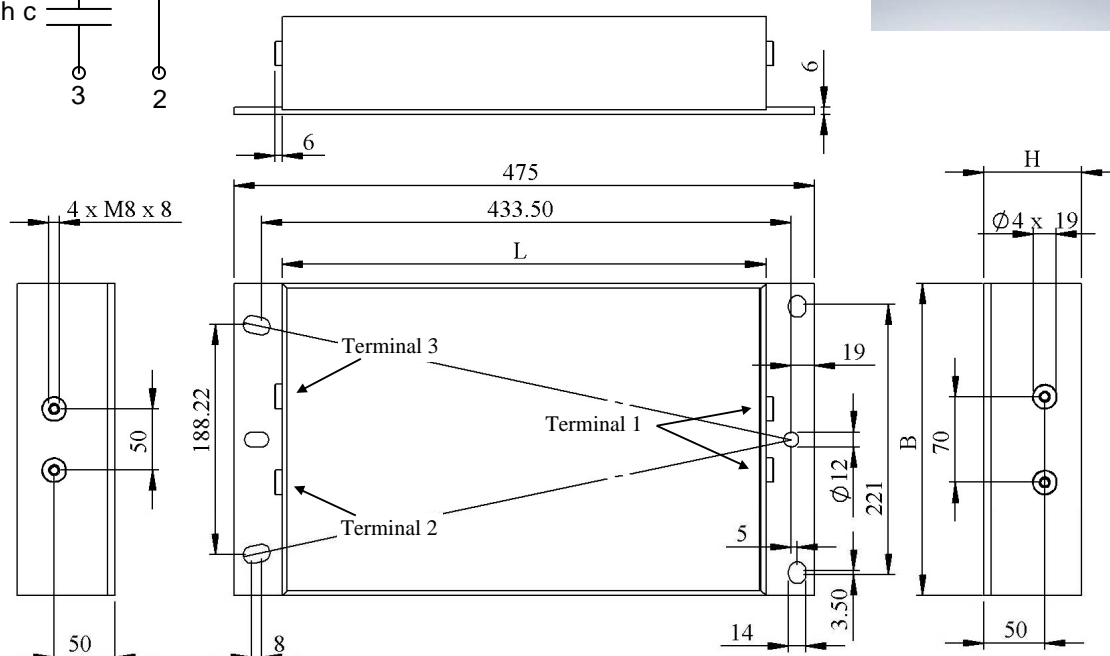
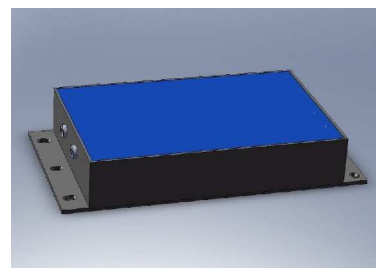
#6193

Discharge capacitors

PPMF 6500-0125 ru K



low c 141 nF / 57.78 kV
high c 1125 nF / 7.22 kV



Dielectric polypropylene metallized

Plastic case

polyurethan resin filled

| Parameter | Symbol | Value | Unit | Condition |
|---------------------------------------|------------------|------------|------------------|--------------|
| Capacitance | C | 0.125 | μF | 1 V / 1 kHz |
| Tolerance | | ± 10 | % | |
| Maximum voltage | U max. | 65 | k VDC | |
| Maximum ΔU voltage | ΔU max. | 5 | kVDC | |
| Repetitive discharge current | I cr. max | 165 | A | |
| Fault Current | I f | 400 | A | |
| RMS Current | I _{eff} | 8 | A _{eff} | |
| Tangent delta | tgδ | ≤ 5 | 10 ⁻⁴ | 1 V / 1 kHz |
| Tangent delta | tgδ | ≤ 6 | 10 ⁻⁴ | 1 V / 10 kHz |
| Stray inductance | ESL | ≤ 400 | nH | |
| Test voltage between terminals 1 to 3 | U T | 78 | kVDC | 1 min |
| Maximal repetition rate | F | 1000 | pps | |
| Operating Temperature | | -20 to + ∞ | °C | |
| | | | | |
| Dimension | Symbol | | Unit | Conditions |
| Width | B | 255 ± 1.5 | mm | |
| Length | L | 396 ± 1.5 | mm | |
| Height | H | 80 ± 1.5 | mm | |
| | M1 | | | |
| | M0 | | | |
| | Modification | Date | Visa émetteur | |

Condensateurs CH 1400 Yverdon, Switzerland
Kondensatoren Tel.: ++41 24 445 66 88
Capacitors Fax: ++41 24 445 66 89

Leclanché
Capacitors
A FISCHER & TAUSSCH COMPANY

HJJ

www.Lcap.ch
07.06.2013

capinfo@Lcap.ch
faisab6193.XLS