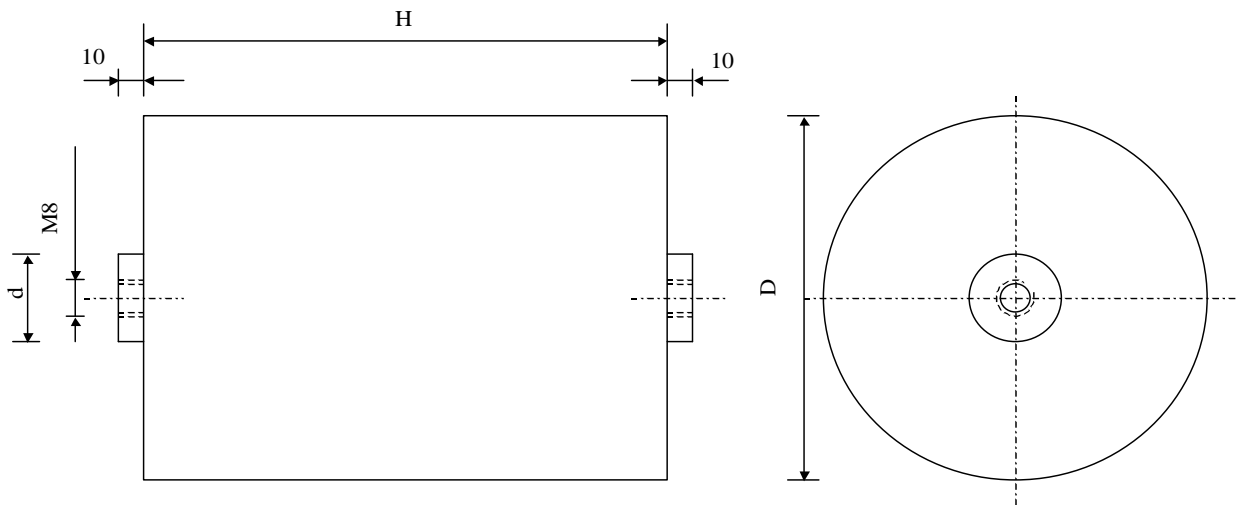


#5930

Discharge capacitors

PPMF 600-183.0 uv K



Dielectric of metallized polypropylene - Plastic tube

Polyurethane resin end sealing - Threaded outputs

| Parameter                         | Symbol          |            | Value         | Unit                     | Condition       |
|-----------------------------------|-----------------|------------|---------------|--------------------------|-----------------|
| Capacitance                       | C               |            | 183           | $\mu\text{F}$            | 1 V / 1 kHz     |
| Tolerance                         |                 |            | $\pm 10$      | %                        |                 |
| Rated voltage                     | Un DC           |            | 6'000         | VDC                      |                 |
| Repetitive surge current          | I cr. max       |            | 17'000        | A                        |                 |
| Equivalent serie resistance       | ESR             |            | $\leq 20$     | m $\Omega$               | 1 V / 1 kHz     |
| Stray inductance                  | ESL             |            | $\leq 70$     | nH                       |                 |
| Insulation resistance             | Ri x C          |            | $> 20'000$    | s                        | 500 VDC - 1 min |
| Test voltage between terminals    | U T1            |            | 7'200         | VDC                      | 10 s            |
| Permissible reverse voltage       |                 |            | 30%           |                          |                 |
| Estimated operational life (-5 %) |                 |            | $> 5000$      | Discharges               | 6 kV / 17 kA    |
|                                   |                 |            |               |                          |                 |
|                                   |                 |            |               |                          |                 |
| Dimension                         | Symbol          |            |               | Unit                     | Conditions      |
| Diameter                          | $\varnothing D$ |            | 200           | mm                       |                 |
| Heigth                            | H               |            | 175           | mm                       |                 |
| Terminals                         |                 |            |               |                          |                 |
| Thread                            |                 |            | M8 x 10       | mm                       |                 |
|                                   | $\varnothing d$ |            | 20            |                          |                 |
| Max torque on inserts             |                 |            | 8.5           | Nm                       |                 |
|                                   |                 |            |               |                          |                 |
|                                   | M1              |            |               |                          |                 |
|                                   | MO              | 15.06.2010 | FS            | Rev. Voltage, max torque |                 |
|                                   | Modification    | Date       | Visa émetteur |                          |                 |

Condensateurs CH 1400 Yverdon, Switzerland  
 Kondensatoren Tel.: ++41 24 445 66 88  
 Capacitors Fax: ++41 24 445 66 89

**Lecaniché**  
**Capacitors**  
A FISCHER & TALSCHER COMPANY

HJJ

www.Lcap.ch  
 25.05.2010

capinfo@Lcap.ch  
 faisab5930.XLS