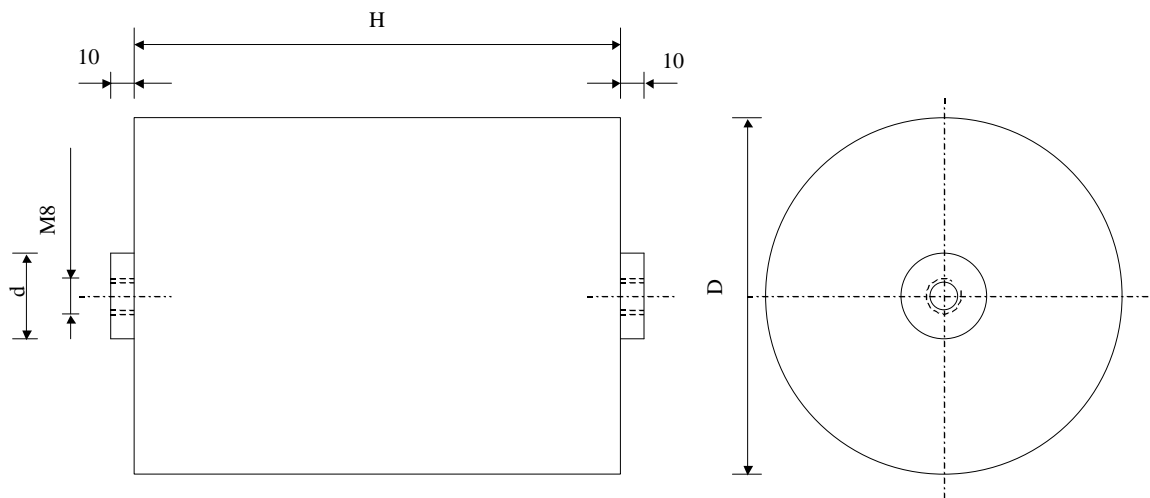


#5912

Discharge capacitors

PPMF 5000-20.0 uv K



Dielectric of metallized polypropylene - Plastic tube

Polyurethane resin end sealing - Threaded outputs

Parameter	Symbol		Value	Unit	Condition
Capacitance	C		20	μF	1 V / 1 kHz
Tolerance			± 10	%	
Rated voltage	$U_n \text{ DC}$		50'000	VDC	
Repetitive surge current	$I_{cr. \text{ max}}$		4000	A	
Equivalent serie resistance	ESR		≤ 80	$\text{m}\Omega$	1 V / 1 kHz
Stray inductance	ESL		≤ 300	nH	
Insulation resistance	$R_i \times C$		$> 30'000$	s	500 VDC - 1 min
Test voltage between terminals	U_{T1}		51'500	VDC	60 s
Estimated operational life (-5 %)			> 2000	Discharges	50 kV / 4 kA
Dimension	Symbol			Unit	Conditions
Diameter	$\varnothing D$		200	mm	
Heigth	H		870	mm	
Terminals					
Thread			M8 x 10	mm	
	$\varnothing d$		20		
	M1				
	M0				
	Modification	Date	Visa émetteur		

Condensateurs CH 1401 Yverdon-les-Bains
 Kondensatoren Tel.: ++41 24 445 66 88
 Capacitors Fax: ++41 24 445 66 89

Le lanché
Capacitors
A FIBSONY & PAUSCHÉ COMPANY

HJJ

26.03.2010

faisab5912.XLS